

Operating Instructions and Parts Reference

2100TM

BALEBUSTER

SERIAL NUMBER 21CJ010100 AND UP

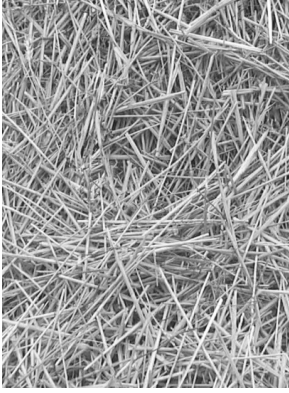


PRODUCT INFORMATION

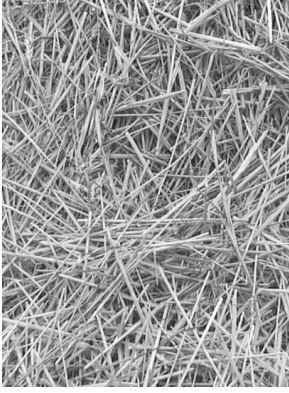


0500115 • July 2018

DURATECH INDUSTRIES INTERNATIONAL INC.
PO Box 1940, JAMESTOWN, ND 58402-1940
TEL: (701) 252-4601 • FAX: (701) 252-0502
WWW.DURATECHINDUSTRIES.NET • WWW.HAYBUSTER.COM



HAYBUSTER[®]
A Tradition of Innovation Since 1966



HAYBUSTER[®]

2100



BALEBUSTER[™]

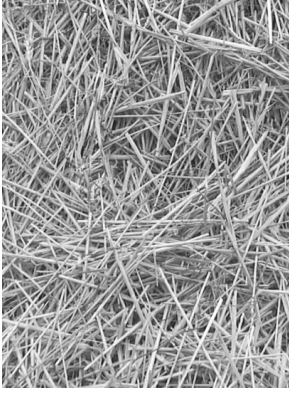
SERIAL NUMBER 21CJ010100 AND UP

Operating Instructions and Parts Reference

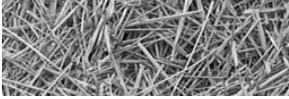
DuraTech Industries International Inc. (DuraTech Industries) has made every effort to assure that this manual completely and accurately describes the operation and maintenance of the 2100 BALEBUSTER[™] as of the date of publication. DuraTech Industries reserves the right to make updates to the machine from time to time. Even in the event of such updates, you should still find this manual to be appropriate for the safe operation and maintenance of your unit.

This manual, as well as materials provided by component suppliers to DuraTech Industries are all considered to be part of the information package. Every operator is required to read and understand these manuals, and they should be located within easy access for periodic review.

 **DURATECH[®]** &  are registered trademarks of Duratech Industries International, Inc. BALEBUSTER is a trademark of Duratech Industries International, Inc.



HAYBUSTER[®]
A Tradition of Innovation Since 1966



FOREWORD



Foreword

All personnel must read and understand the following sections before operating the *2100 BALEBUSTER™*.

- Section 2, "Dealer Preparation," to verify that the machine has been prepared for use.
- Section 3 which explain normal operation of the machine.
- Foreword and Section 1, important safety information.
- Section 3.2.1, "Pre-Operation Inspection".

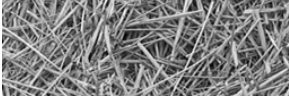
Appropriate use of unit

Your model 2100 BALEBUSTER™ is designed to load and shred most types of baled livestock forage. It is designed specifically for use on 6-1/2 ft. diameter round bales weighing up to 1,500 pounds and 5-1/2 feet in length.

To avoid possible damage to the machine and risk of injury to the operator, consult with a DuraTech Industries representative before attempting to shred materials other than livestock forage.

The 2100 BALEBUSTER has multiple uses:

- Laying forage windrows in open fields.
- Filling feed bunks - fenceline, circular etc.
- Spreading straw for livestock bedding.
- Spreading forage over perennial plants, such as strawberries, mushrooms, etc.
- Spreading forage over reclaimed land areas.



Operator protection



WARNING: As with all machinery, care needs to be taken in order to insure the safety of the operator and those in the surrounding area.

The OPERATOR IS RESPONSIBLE for the safety of the operator and those in the surrounding area.

Operators of the 2100 BALEBUSTER are required to wear head, eye, and ear protection, No loose clothing is allowed.

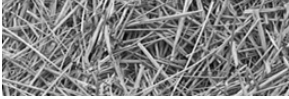


TABLE OF CONTENTS

Part 1: Operating Instructions	1
Introduction	2
Purpose	2
Section 1: Safety	4
1.1 Safety-alert symbols	4
1.2 Operator - personal equipment	6
1.3 Machine safety labels	7
1.4 Shielding	9
1.5 Personal equipment	9
1.6 Safety review	9
1.7 Towing/road transport	11
Section 2: Dealer preparation	12
2.1 Assembly required	12
2.2 Pre-delivery inspection	13
2.3 Machine operation check	13
2.4 2100 BALEBUSTER shipping list	14
Section 3: Machine Operation	15
3.1 Introduction to the machine	15
3.1.2 Operator's station/controls	15
3.1.3 Bale conveyor speed	16
3.1.4 Deflector	16
3.1.5 Stripper plates/screens	17
3.1.6 Rotor	17
3.1.7 Slug bars	18
3.1.8 Rotor access door	18
3.2 Operation	19
3.2.1 Pre-operation inspection	19
3.2.2 Hitching the 2100 BALEBUSTER to a tractor	20
3.2.3 Starting the machine	21
3.2.4 Normal shut-down procedure	22
3.2.5 Unhitching the 2100 BALEBUSTER from a tractor	22
3.2.6 Loading bales into the 2100 BALEBUSTER	23
3.3 Transportation and storage	24
3.3.1 Preparing for storage	24
3.3.2 Removing from storage	25

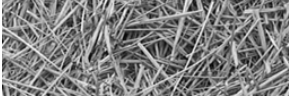
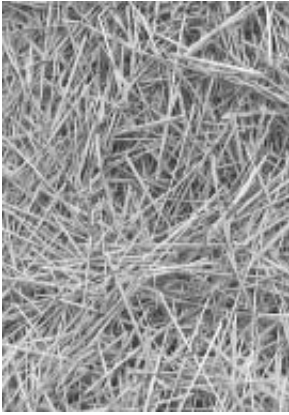


TABLE OF CONTENTS

3.4 Adjusting the machine	26
3.4.1 Changing distribution pattern	26
3.4.2 Changing length of cut	26
Section 4: General maintenance	28
4.1 Maintenance and adjustments	28
4.2 Lubrication	29
4.3 Axle, wheels, tires	30
4.4 General appearance	30
Section 5: Troubleshooting	31
Appendix A: Warranty	33
Appendix B: 2100 BALEBUSTER Specifications	34
Appendix C: Required For Operation	35
Part 2: Parts Reference	37
MAIN FRAME ASSEMBLY THRU S.N. 21-HJ-89000	38
MAIN FRAME ASSEMBLY S.N. 21-IJ-89100 AND UP	40
SHREDDER FRONT ASSEMBLY	42
PRESSURE RELIEF VALVE	44
REAR BEARING AND BALE GUIDE ASSEMBLY	46
ROTOR ASSEMBLY	48
BALE CONVEYOR ASSEMBLY THRU S.N. 21-HJ-89000	50
BALE CONVEYOR ASSEMBLY S.N. 21-IJ-89100 AND UP	52
BALE LOADER ASSEMBLY	54
RACK DEFLECTOR ASSEMBLY	56
SHIPPING KIT HARDWARE	58
HYDRAULIC ASSEMBLY	60
FLOW CONTROL VALVE (4000213)	62
FLOW CONTROL VALVE (4000331)	64
ORBIT MOTOR	66
WHEEL AND BEARING	68
PTO ASSEMBLY #3600107 - STEEL GUARD	70
PTO ASSEMBLY #3600516 - PLASTIC GUARD	72
BALEBUSTER QUICK TATCH	74
TAILLIGHTS AND OPERATOR'S MANUAL ENCLOSURE	76
2100 BALEBUSTER DECAL REQUIREMENTS	78
2100 BALEBUSTER DECAL LOCATIONS	80
2100 BALEBUSTER Documentation Comment Form	81

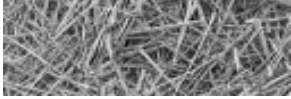


2100

BALEBUSTER™

SERIAL NUMBER 2IC010100 AND UP

Part 1:
Operating Instructions



Introduction

Your model 2100 BALEBUSTER™ is designed to load and shred most types of baled livestock forage. It is designed specifically for use on 6-1/2 ft. diameter round bales weighing up to 1,500 pounds and 5-1/2 feet in length.

To avoid possible damage to the machine and risk of injury to the operator, consult with a DuraTech Industries representative before attempting to shred materials other than livestock forage.

The 2100 BALEBUSTER has multiple uses:

- Laying forage windrows in open fields.
- Filling feed bunks - fenceline, circular etc.
- Spreading straw for livestock bedding.
- Spreading forage over perennial plants, such as strawberries, mushrooms, etc.
- Spreading forage over reclaimed land areas.

Purpose

The purpose of this owner's manual is to explain maintenance requirements and routine adjustments for the most efficient operation of your 2100 BALEBUSTER. There is also a trouble shooting section that may help in case of problems in the field. Any information not covered in this manual may be obtained from your dealer.



SPECIAL NOTE: When reference is made as to front, rear, left hand, or right hand of this machine, the reference is always made from standing at the rear end of the machine and looking toward the hitch. Always use serial number and model number when referring to parts or problems. Please obtain your serial number and write it below for your future reference.

MODEL 2100 BALEBUSTER

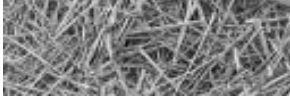
SERIAL NO _____

How to use this manual

Manual organization

This manual is organized into the following parts:

- **Part 1: Operating instructions** explain how to set up, use and maintain the 2100 BALEBUSTER.
- **Part 2: Parts reference** contains diagrams of each assembly, with the part number of each part. A key on the facing page contains a description of the part and the quantity used.

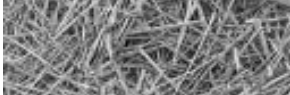


Dealer responsibilities

- Read Section 2, “Dealer Preparation,” and perform the tasks outlined. Also perform a pre-operation inspection as described in Section 3.2.1.
- Upon delivery of the unit to the customer, it is your responsibility to conduct a training session on the safe operation of the unit for the primary operator(s). You must also conduct a “walk-around” inspection of all safety instructional decals on the machine itself. Decals are illustrated in **Part 2: Parts Reference**.
- Complete and return the Warranty Registration Card. Receipt of this form is required to activate the warranty. **Appendix A** provides details of the warranty.

Operator responsibilities

- Operator is responsible for his safety.
- Operator is also responsible for safety of others near the machine.
- Review Section 2, “Dealer Preparation,” to verify that the machine has been prepared for use.
- Thoroughly review sections 1 and 3, which explain normal operation of the machine, and section 4, which explain maintenance requirements.
- Note the important safety information in the Foreword and in Section 1, “Safety.”
- Keep copies of all manuals in a readily accessible location for future reference.



Section 1: Safety

The safety of the operator is of great importance to DuraTech Industries/Haybuster. We have provided decals, shield and other safety features to aid you in using your machine safely. In addition, we ask you to be a careful operator who will properly use and service your Haybuster equipment.



WARNING: FAILURE TO COMPLY WITH SAFETY INSTRUCTIONS THAT FOLLOW WITHIN THIS MANUAL COULD RESULT IN SEVERE PERSONAL INJURY OR DEATH. BEFORE ATTEMPTING TO OPERATE THIS MACHINE, CAREFULLY READ ALL INSTRUCTIONS CONTAINED WITHIN THIS MANUAL. ALSO READ THE INSTRUCTION MANUAL PROVIDED WITH YOUR TRACTOR.

THIS MACHINE IS NOT TO BE USED FOR ANY PURPOSE OTHER THAN THOSE EXPLAINED IN THE OPERATOR'S MANUAL, ADVERTISING LITERATURE OR OTHER DURATECH INDUSTRIES WRITTEN MATERIAL PERTAINING TO THE 2100 BALEBUSTER.

1.1 Safety-alert symbols

Decals are illustrated in **Part 2: Parts Reference**.

The safety decals located on your machine contain important and useful information that will help you operate your equipment safely.

To assure that all decals remain in place and in good condition, follow the instructions below:

- Keep decals clean. Use soap and water - not mineral spirits, adhesive cleaners and other similar cleaners that will damage the decal.
- Replace all damaged or missing decals. When attaching decals, surface temperature of the machine must be at least 40° F (5° C). The surface must be also be clean and dry.
- When replacing a machine component to which a decal is attached, be sure to also replace the decal.



DuraTech Industries uses industry accepted ANSI or ASAE standards in labeling its products for safety and operational characteristics.



Safety-Alert Symbol

Read and recognize safety information. Be alert to the potential for personal injury when you see this safety-alert symbol.

DANGER: Indicates an imminently hazardous situation that, if not avoided, will result in death or serious injury. This signal word is to be limited to the most extreme situations, typically for machine components that, for functional purposes, cannot be guarded.

WARNING: Indicates a potentially hazardous situation that, if not avoided, could result in death or serious injury, and includes hazards that are exposed when guards are removed. It may also be used to alert against unsafe practices.

CAUTION: Indicates a potentially hazardous situation that, if not avoided, may result in minor or moderate injury. It may also be used to alert against unsafe practices.

This manual uses the symbols to the right to denote important safety instructions and information.

The **DANGER**, **WARNING** and **CAUTION** symbols are used to denote conditions as stated in the text above. Furthermore, the text dealing with these situations is surrounded by a box with a white background, will begin with **DANGER**, **WARNING**, or **CAUTION**.

The **INFORMATION** symbol is used to denote important information or notes in regards to maintenance and use of the machine. The text for this information is surrounded by a box with a light grey background, and will begin with either **IMPORTANT** or **NOTE**.



DANGER:
Signal word - White Lettering/Red Background
Safety Alert Symbol - White Triangle/Red Exclamation Point

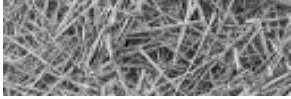


WARNING:
Signal word - Black Lettering/Orange Background
Safety Alert Symbol - Black Triangle/Orange Exclamation Point



CAUTION:
Signal word - Black Lettering/Yellow Background
Safety Alert Symbol - Black Triangle/Yellow Exclamation Point





1.2 Operator - personal equipment

THE OPERATOR

Physical Condition

You must be in good physical condition and mental health and not under the influence of any substance (drugs, alcohol) which might impair vision, dexterity or judgment.

Do not operate a **2100 BALEBUSTER** when you are fatigued. Be alert - If you get tired while operating your **2100 BALEBUSTER**, take a break. Fatigue may result in loss of control. Working with any farm equipment can be strenuous. If you have any condition that might be aggravated by strenuous work, check with your doctor before operating.

Proper Clothing



Clothing must be sturdy and snug-fitting, but allow complete freedom of movement. Avoid loosefitting jackets, scarfs, neckties, jewelry, flared or cuffed pants, unconfined long hair or anything that could become entangled with the machine.



Protect your head with a hard hat to reduce the risk of injury from flying debris.



Protect your hands with gloves when handling flail and sections. Heavyduty, nonslip gloves improve your grip and protect your hands.



Good footing is most important. Wear sturdy boots with nonslip soles. Steel-toed safety boots are recommended.




To reduce the risk of injury to your eyes never operate a **2100 BALEBUSTER** unless wearing goggles or properly fitted safety glasses with adequate top and side protection.



Tractor noise may damage your hearing. Always wear sound barriers (ear plugs or ear muffers) to protect your hearing. Continual and regular users should have their hearing checked regularly.

1.3 Machine safety labels


The safety decals located on your machine contain important information that will help you operate your equipment. Become familiar with the decals and their locations.

 **DANGER:** FLYING HAY, ROCKS, AND OTHER OBJECTS THROWN BY MACHINE.

STAY CLEAR OF DISCHARGE SIDE OF MACHINE UNLESS OPERATOR HAS STOPPED TRACTOR ENGINE AND MACHINE HAS STOPPED ROTATING. FAILURE TO FOLLOW THESE INSTRUCTIONS MAY RESULT IN SEVERE PERSONAL INJURY OR DEATH.




6500034

 **DANGER:** ROTATING FLAILS CAN KILL OR DISMEMBER

KEEP CLEAR OF MACHINE UNTIL POWER TAKE-OFF HAS BEEN DISENGAGED, TRACTOR ENGINE SHUT OFF AND FLAIL ROTATION STOPPED



6500035


 **DANGER:** ROTATING DRIVELINE, CONTACT CAN CAUSE DEATH, KEEP AWAY!

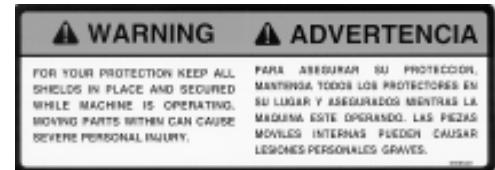
DO NOT OPERATE WITHOUT

- ALL DRIVELINE GUARDS, TRACTOR AND EQUIPMENT SHIELDS IN PLACE
- DRIVELINES SECURELY ATTACHED AT BOTH ENDS
- DRIVELINE GUARDS THAT TURN FREELY ON DRIVELINE

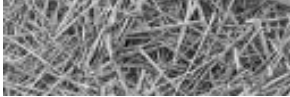


6500085

 **WARNING:** FOR YOUR PROTECTION KEEP ALL SHIELDS IN PLACE AND SECURED WHILE MACHINE IS OPERATING MOVING PARTS WITHIN CAN CAUSE SEVERE PERSONAL INJURY.



6500040



WARNING: FOR YOUR PROTECTION AND PROTECTION OF OTHERS, PRACTICE THE FOLLOWING SAFETY RULES.

1. Read and understand operators manual before operating machine.
2. Place all controls in neutral, stop engine, remove ignition key, lock out power source, and wait for all motion to stop before servicing, adjusting, repairing, or unplugging.
3. Read and understand all decals on machine for your safety.
4. Keep all shields in place while machine is in operation.
5. Keep hands, feet, hair, and clothing away from moving parts.
6. Keep others away from machine while in operation.
7. Install safety locks before transporting, or working beneath components.
8. Do not allow riders at any time.
9. Do not leave machine unattended with engine running.
10. Keep all hydraulic lines, couplings, and fittings free of leaks during operation.
11. Keep away from overhead electrical lines. Electrocutation can occur without direct contact.
12. Review safety instructions periodically.

 WARNING FOR YOUR PROTECTION AND SAFETY OF OTHERS, FOLLOW THESE SAFETY RULES.	 ADVERTENCIA PARA SU PROTECCIÓN Y LA SEGURIDAD DE OTROS, OBSERVE ESTAS NORMAS DE SEGURIDAD.
<ol style="list-style-type: none"> 1. Read and understand operators manual before operating machine. 2. Place all controls in neutral, stop engine, remove ignition key, lock out power source, and wait for all motion to stop before servicing, adjusting, repairing, or unplugging. 3. Read and understand all decals on machine for your safety. 4. Keep all shields in place while machine is in operation. 5. Keep hands, feet, hair, and clothing away from moving parts. 6. Keep others away from machine while in operation. 7. Install safety locks before transporting, or working beneath components. 8. Do not allow riders at any time. 9. Do not leave machine unattended with engine running. 10. Keep all hydraulic lines, couplings, and fittings free of leaks during operation. 11. Keep away from overhead electrical lines. Electrocutation can occur without direct contact. 12. Review safety instructions periodically. 	<ol style="list-style-type: none"> 1. Leer y comprender el manual del operador antes de operar el equipo. 2. Colocar todos los controles en neutro, apagar el motor, extraer la llave de encendido, bloquear la fuente de alimentación y esperar a que se detenga todo el movimiento antes de practicar el mantenimiento, reparar o desenchufar. 3. Leer y comprender todas las etiquetas de seguridad que se encuentren en la máquina. 4. Mantener todos los dispositivos de protección en su lugar durante la operación. 5. Mantener las manos, pies, cabello y ropa lejos de las partes en movimiento. 6. Mantener a otros alejados de la máquina mientras se opera. 7. Instalar dispositivos de bloqueo antes de transportar el equipo o trabajar debajo de las componentes. 8. No permitir a nadie montar en la máquina en ningún momento. 9. No dejar la máquina sin supervisión con el motor encendido. 10. Mantener libres de fugas todos los acoples, conexiones e instalaciones hidráulicas durante la operación. 11. Mantenerse alejados de líneas eléctricas aéreas. Pueden producirse lesiones por electrocución sin contacto directo. 12. Revisar las instrucciones de seguridad con regularidad.

6500041

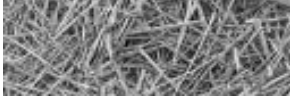


WARNING: NO RIDERS
SERIOUS INJURY COULD RESULT FROM RIDING ON THE MACHINE

 WARNING No Riders Serious personal injury could result from riding on the machine.		 ADVERTENCIA Pasajeros Prohibidos Podrían resultar lesiones personales graves al viajar en la máquina.
--	---	---

6500043

- Replacement decals can be purchased from your Haybuster dealer.



1.4 Shielding

Shields are installed for your protection. Keep them in place, and replace damaged shields.

1.5 Personal equipment

Operators of this machine are required to wear head, eye, and ear protection. No loose clothing is allowed.

1.6 Safety review

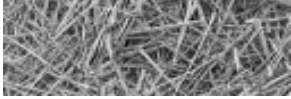
BEFORE OPERATING

1. Read and follow all instructions contained in:
 - a. This **2100 BALEBUSTER operator's manual**
 - b. Tractor operator's manual
 - c. Decals placed on the 2100 BALEBUSTER.



NOTE: Additional copies of the above mentioned materials can be obtained from your dealer.

2. Allow only responsible, properly instructed individuals to operate your machine. Carefully supervise inexperienced operators.
3. Use a tractor that meets the tractor requirements contained within this manual. Additional weights may be necessary.
4. Make sure the machine is in good operating condition and that all protective shields are in place and in proper working order. Replace damaged shields before operating.
5. Be sure all bystanders and other workers are clear before starting tractor and 2100 BALEBUSTER.
6. Make no modifications to the machine unless specifically recommended or requested by the manufacturer.
7. Check periodically for breaks or unusual wear and make any necessary repairs.
8. Be sure the unit is securely attached to a tractor of equal or greater weight than the 2100 BALEBUSTER and bale.



DURING OPERATION

1. Enforce the following safety precautions and others contained in this manual to prevent serious personal injury or death due to accidental contact with rotating flails.
 - a. Everyone must be kept clear of work area except operator seated at tractor controls.
 - b. **Never work on or near the 2100 BALEBUSTER unless engine is shut off and flails stopped.**
 - c. Disengage PTO and make sure everyone is clear of machine before starting engine.
2. Enforce the following safety precautions and others contained in this manual to prevent injury due to accidental contact with flying material thrown by flails.
 - a. Keep bystanders away from work area.
 - b. Keep shields in place and in good condition.
 - c. Watch out for and avoid any object that might interfere with the proper operation of the machine.
 - d. Replace missing or damaged flails.
3. Power takeoff shafts must be locked in place with protective PTO shields in place.
4. Keep hands, feet and clothing away from power driven parts.
5. **Never leave tractor controls unattended while the engine is running.**
6. Never allow riders on the machine or tractor at any time.
7. Exercise extreme care when operating on rough and or steep terrain. Avoid operation on terrain that is excessively rough or steep.

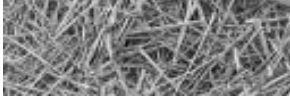
DURING SERVICE AND MAINTENANCE



CAUTION: When performing service and maintenance, make sure your tractor engine is off.

CAUTION: Before performing any maintenance or adjustments make sure machine is NOT running. If for any reason arc welding is to be done, always ground cylinder to frame of machine to prevent arcing in bearings.

1. Check for loose or badly worn bolts.
2. Check for loose or misaligned sprockets on bale conveyor.
3. Conveyor chain should be adjusted to allow lifting slat 1" to 1-1/2" above deck.
4. Follow Lubrication Chart.
5. Inspect rotor and all rotating parts for twine or wire build-up.
6. Check air pressure in tires, 40 psi (2.76 bar)



7. The discharge deflector is adjustable to allow forage to be spread to any desired width.
8. Slug bars in front of rotor may be adjusted to expose more or less of the flail knives by adding or subtracting washers. **(See section 3.4, “Adjusting the machine” for more information)**
9. Check wheel bearings, and seals
10. Torque flail knife anchor bolts, 156 ft. lbs. (21.5 Kg/m)
11. Relieve all pressure in the hydraulic system before disconnecting the lines or performing other work on the system. Make sure all connections are tight and lines are in good condition before applying pressure to the system.

1.7 Towing/road transport

This machine is designed to fold for ease of transportation and storage.

1. To fold rack and deflector, loader and tine frame:
 - a. Raise the deflector to it's highest position.
 - b. Unlock rack strap. Fold rack and deflector into chamber.
 - c. Tilt hinge frame hydraulically to allow loader tine frame to be folded into transport position. Lock tine frame pin in transport position.
 - d. Tilt hinge frame hydraulically into transport/storage position.
2. Use good judgment and drive slowly over rough or uneven terrain.
3. Be sure tractor brakes are properly adjusted and foot pedals are locked together.
4. Check your state laws regarding the use of lights, slow moving vehicle signs, safety chain and other possible requirements.



Section 2: Dealer preparation

2.1 Assembly required

Park 2100 BALEBUSTER on flat surface, and block wheels.

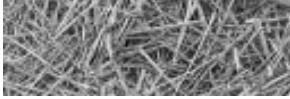
Open shipping kit, verify that all parts are included.

Refer to the parts book portion, pages 38 and 39, Main Frame Assembly; and pages 54 and 55, Shipping Kit Hardware for this portion.

1. Attach adjustable hitch parts 8100654 and 8100655 (parts 27 and 26) to frame using the 1x3 and 3/4x2-1/2 bolts as shown in the drawing. Tighten the bolts and nuts. Hole position will depend on the tractor used, see section 3.2.2 for more information.
2. Attach hitch brace 8100137 using the 5/8x2 bolts, as shown in the drawing.
3. Attach link pins, 4800086 to hitch. If installing a quick tach, refer to pages 66 and 67, BALEBUSTER Quick Tach for placement of parts.
4. Install PTO shaft on Rotor shaft
 - A. Place key 6200020 in keyway.
 - B. Slide the machine end yoke of the PTO shaft over the rotor shaft and key.
 - C. Tighten the clamp bolt to lock the PTO yoke in place.
 - D. Tighten the set screw to hold the key in place.

Refer to pages 40 and 41, Shredder Front Assembly for this portion

5. Install PTO shield 8101144 on 2100 BALEBUSTER using the 3/8x1 bolts as shown in the drawing.
6. Be sure to measure shaft end distances when hitching to tractor, see section 3.2.2.



2.2 Pre-delivery inspection

INSTRUCTIONS: Before delivering the machine, check the following items carefully and make corrections when necessary. Place an “X” in the box after each item has been checked and found to be acceptable.

- Check machine for shortage or damage in transit
- Check for loose bolts or set screws
- Check all hydraulic components for leaks or damage
- Check lug bolts for tightness
- Check tires for proper air pressure (40 psi or 2.76 bar)
- Check condition of tire rims
- Check machine for proper lubrication
- Check all chains for proper adjustment
- Check all shields for installation and condition
- Check condition of all decals
- Check all phases of operation
- Check for loose flail anchor bolts, torque to 156 ft. Ibs. (21.5 Kg/m)

2.3 Machine operation check

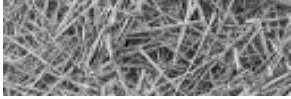
With Tractor hooked up to the 2100 BALEBUSTER, try all functions on the machine.

When unfolding, keep bystanders away from work area.

1. Unfold rack and deflector, and loader tine frame; To unfold the loader tine frame, place the tine frame in the unlocked position, tilt hinge frame hydraulically to allow loader tine frame to lay on ground. Lock tine frame pin, located at hinge point, to prevent tines from folding in each time a bale is loaded. Unlock latch pin. Fold out rack and deflector. Lock both into working position.
2. Adjust the deflector.

With the engine at idle:

1. Raise and lower the loading tines.
2. Engage the bale conveyor, and adjust conveyor speed control valve on the 2100 BALEBUSTER.
3. Engage the tractor PTO, and the rotor should start turning. Listen for any odd noises and vibrations.

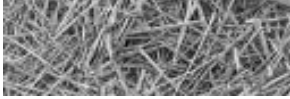


2.4 BIG BALEBUSTER shipping list

ITEM	PART NO.	QTY.	DESCRIPTION
1.	8100655	1	Adjustable Hitch, Right Hand
2.	8100654	1	Adjustable Hitch, Left Hand
3.	8100137	1	Adjustable Hitch, Brace
4.	4800086	2	Link Pin, 1-1/8"
5.	8101144	1	PTO Shield
6.	5000025	2	1-1/8" Lock Washer
7.	4900024	2	1-1/8" Hex Nut Fine Thread
8.	4800140	2	1"x3" Bolt
9.	5000053	2	1" Lock Washer
10.	4900031	2	1" Nut
11.	4800115	2	3/4 x 2-1/2" Bolt
12.	5000012	2	3/4" Lock Washer
13.	5000005	2	3/4" Flat Washer
14.	4900004	2	3/4" Nut
15.	4800010	4	5/8"x2" Bolt
16.	5000003	4	5/8" Lock Washer
17.	4900005	4	5/8" Hex Nut
18.	5000002	4	5/8" Flat Washer
19.	0500115	1	Operation & Parts Manual



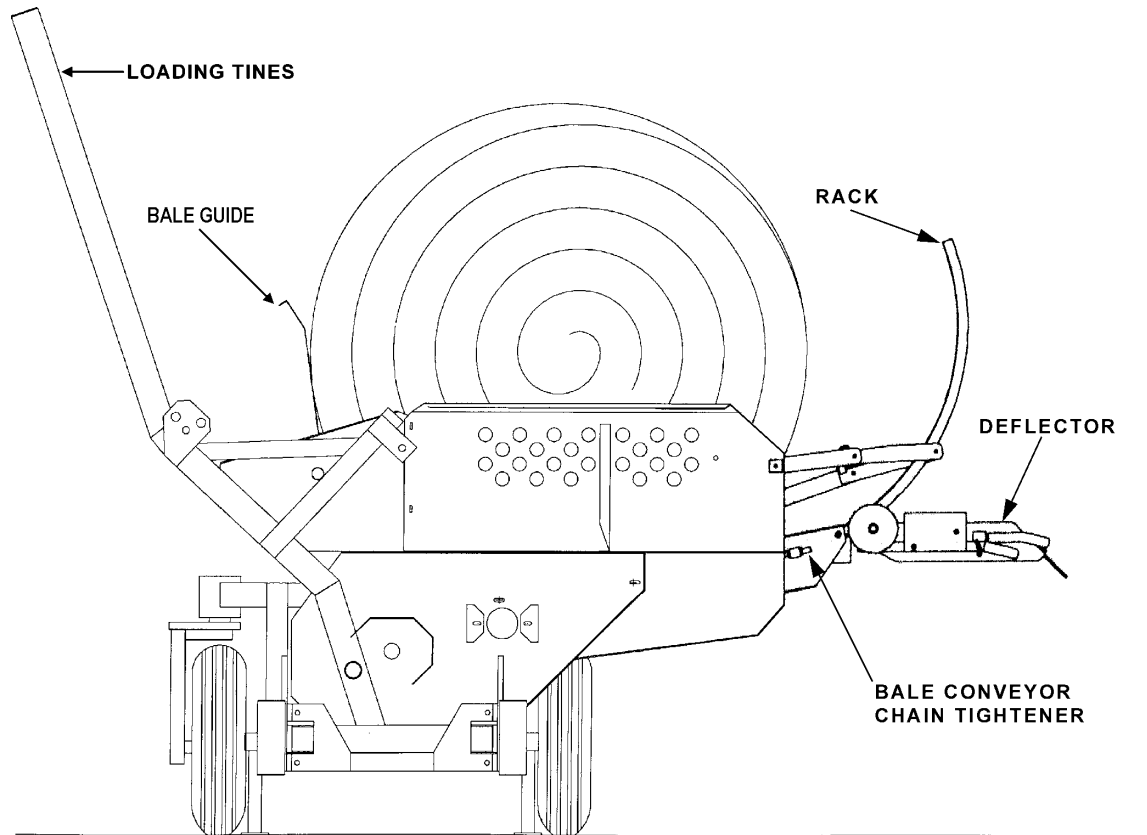
NOTE: See pages 38 and 39 Main Frame Assembly, and pages 54 and 55 Shipping Kit Hardware for more information.



Section 3: Machine Operation

3.1 Introduction to the machine

Figure 3.1
Front view of the 2100
BALEBUSTER



3.1.2 Operator's station/controls

Operator controlled items:

- Loading tines, to load the bale. One tractor hydraulic circuit is used to control loading tines. (See section 3.2.6 for more information.)
- The PTO shaft, which runs the rotor.
- The bale conveyor chain. Another tractor hydraulic circuit is used to control the bale conveyor's speed and direction. If the tractor is equipped with a PFC circuit, use it to control the bale conveyor.

Adjustable items:

- The conveyor speed control valve (See section 3.4.2 for more information.)
- Slug bar setting (See section 3.4.2 for more information.)
- Deflector settings (See section 3.4.1 for more information.)



3.1.3 Bale conveyor speed

Bale conveyor speed is set with the bale conveyor speed control valve. To chop the forage finer, decrease the conveyor speed by rotating the control lever up and to the left. For a coarser cut, increase the conveyor speed by rotating the lever to the right and down.

speed control valve



3.1.4 Deflector

The deflector can be positioned for creating a windrow, spreading, bunkfeeding, or stockpiling. Lower the deflector for a narrower windrow and raise the deflector for a wider spread.

To change the position, squeeze the deflector release lever into the deflector latch handle. Rotate the deflector to the desired position and release. A wider deflector belt (PN 8100819) is available for bunk feeding or additional material control.

Figure 3.2
deflector adjustments -
deflector release lever
and deflector latch
handle



deflector position indicator

deflector release lever

deflector latch handle



3.1.5 Stripper plates/screens

The BALEBUSTER comes with one stripper plate standard. For a finer cut, one or two more stripper plates can be added. **(See section 3.4.2, for more information about adding or removing stripper plates.)**

In applications where a very coarse cut is desired, the stripper plate may be removed.

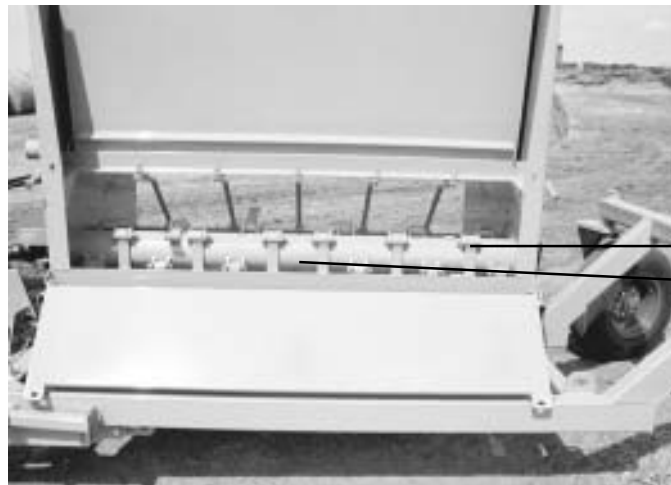


stripper plate

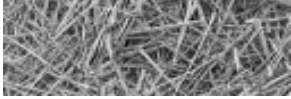
3.1.6 Rotor

The rotor flails shred the bale and throws the material into the deflector. Rotor speed should remain constant, which is done by keeping the tractor PTO at 1000 RPM.

Figure 3.3
Location of the rotor and flails



flail
rotor

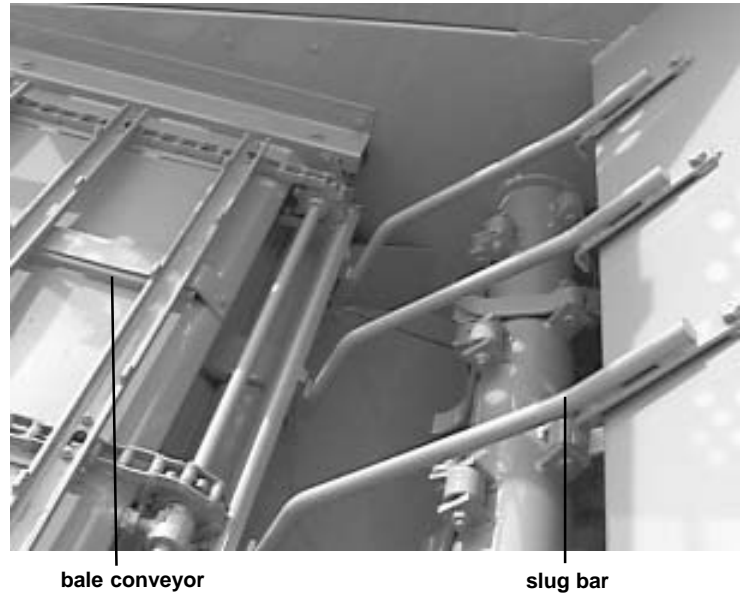


3.1.7 Slug bars

The 2100 BALEBUSTER comes with five slug bars.

The slug bars can also be adjusted to expose more or less of the flail knives to the bale. This is accomplished by adding and subtracting flat washers, from either end of each bar.

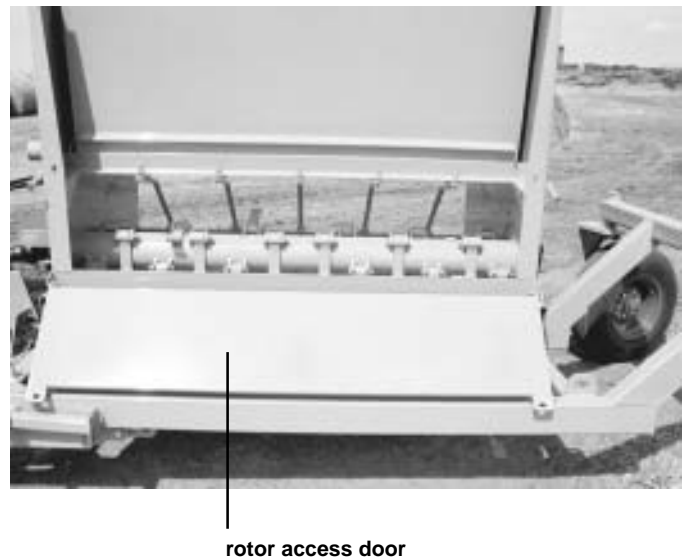
Operating tractor at maximum RPM allows machine to do a better job of chopping forage, and also minimizes twine buildup on the rotor. Twine buildup should be kept to a minimum to reduce fire hazard.



WARNING: SERIOUS INJURY COULD RESULT IF MACHINE IS ALLOWED TO TIP.

Basic machine is equipped with two (2) stands for storage. Make sure base of stands are setting firmly before unhooking from tractor mounts. Always operate slat conveyor to rotate bale in direction indicated by arrow on front shield. Reverse the direction of rotation only if bale is lodged or hesitates to turn.

3.1.8 Rotor access door





3.2 Operation

To insure long life and economical operation, we highly recommend the operator of the 2100 BALEBUSTER be thoroughly instructed in the maintenance and operation of the machine.

There is no substitute for a sound preventative maintenance program and a well-trained operator.

Prior to starting the engine of the tractor, we recommend the operator make a visual inspection of the unit. This can be done as the lubrication is being carried out. Any items that are worn, broken, missing or needing adjustment must be serviced accordingly before operating the 2100 BALEBUSTER.

3.2.1 Pre-operation inspection



WARNING: Before inspecting the machine, use the normal shutdown procedure in section 3.2.4.

Check the following:

- Condition of flails and attachment bolts.
- Rotor for twine build-up.
- Chains for proper tension, and condition.
- Check for loose bolts, worn or broken parts.
- All lubrication points have been serviced.
- Lug nuts for tightness.
- Condition of tire rims.
- Tires for proper air pressure. (40 psi or 2.76 bar)
- Installation of slow moving vehicle (SMV) sign if required.
- Installation and condition of shields.
- Condition of decals.
- Hydraulic components for leaks or damage.
- Check for loose flail anchor bolts, torque to 156 ft. Ibs. (21.5 Kg/m)



WARNING: Hydraulic fluid escaping under pressure can be almost invisible and can have sufficient force to penetrate the skin. When searching for suspected leaks, use a piece of wood or cardboard rather than your hands. If injured, seek medical attention immediately to prevent serious infection or reaction.

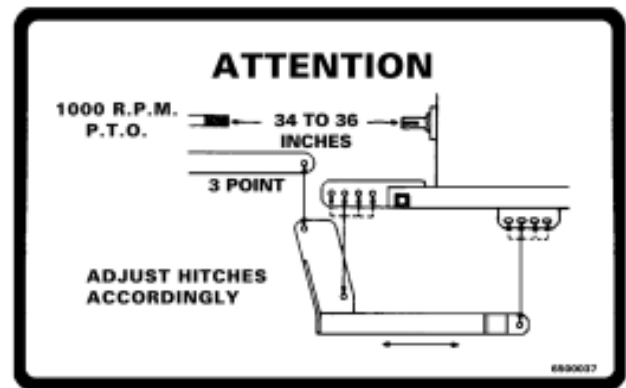
- Test run the 2100 BALEBUSTER before loading. To prevent damaging the 2100 BALEBUSTER always engage PTO with engine idling. Look for excessive vibration, loose or broken parts. Make any necessary repairs before attempting to do any bale feeding.



3.2.2 Hitching the 2100 BALEBUSTER to a tractor

To hitch the 2100 BALEBUSTER to a tractor, perform the following steps:

1. These settings must be made to the tractor's 3-pt hitch prior to operating the 2100 BALEBUSTER.
 - A. Eliminate the 3-pt hitch side-to-side movement by installing or setting the sway blocks for the rigid operation.
 - B. Eliminate lower link mechanical flotation by setting it to the rigid position.
 - C. See the operator's manual or your tractor's dealer for precise instructions.



2. Measure the distance between the end of the PTO shaft and the end of the rotor shaft. The distance should be 34-36 inches.



NOTE: If distance is not 34-36 inches, follow steps 3-5.

3. Detach the tractor from the 2100 BALEBUSTER.
4. Reinstall the adjustable hitches in any of the four holes on the main frame so that the 34 to 36 inch measurement will be obtained when the tractor is attached.
5. Reattach the tractor to the 2100 BALEBUSTER.
6. Attach the PTO shaft to the tractor PTO shaft. Depress the button on the coupling and slide the coupling onto the splined shaft. Make sure the spring loaded safety catch is properly seated.
7. Connect the two hydraulic hoses from the hydraulic cylinder to one set of hydraulic couplers on the tractor.
8. Connect the two hydraulic hoses from the bale conveyor speed control valve to the second set of hydraulic couplers on the tractor.
9. Raise the three point hitch until the 2100 BALEBUSTER frame is level. Lock the hitch control lever in that position.
10. Remove pin on jackstands, and then turn jackstands 90° and use the pin to reinstall the jackstands on the bracket. (See Figure 3.5)



NOTE: The use of stabilizers or sway bars is recommended to prevent sideways movement of the machine.

IMPORTANT: When using smaller tractors in the CATEGORY III class, be certain three-point rating is at least 4000 lbs.



WARNING: Improper hitch adjustment may cause separation of P.T.O., driveline when loading bale or operating over uneven terrain. Separation may also occur if three point links are lifted excessively high.

3.2.3 Starting the machine

With Tractor hooked up to the 2100 BALEBUSTER, try all functions on the machine.

1. To unfold rack and deflector, loader tine frame:
 - a. Place the tine frame pin in the unlocked position.
 - b. When unfolding, keep bystanders away from the work area.
 - c. Start the engine; tilt hinge frame hydraulically to allow the loader tine frame to be unfolded and lay on ground.
 - d. Lock tine frame pin into working position.
 - e. Tilt hinge frame hydraulically to working position.
 - f. Unlock rack strap. Fold out rack and deflector. Lock into working position.
2. Adjust the deflector.

With the engine at idle:

1. Raise and lower the loading tines.
2. Engage the bale conveyor, and adjust conveyor speed control valve on the 2100 BALEBUSTER.
3. Engage the tractor PTO, and the rotor should start turning. Listen for any odd noises and vibrations.



WARNING: After making all necessary hook-ups to tractor, be sure rotor chamber is clear of any solid objects. Make sure any bystanders are away from discharge before engaging PTO. Flying objects can cause serious injury or even death. Stay clear of discharge side of machine unless operator has stopped tractor engine and machine has stopped rotating. Failure to follow these instructions may result in severe injury.

To start the machine, perform the following steps:

1. Adjust the deflector to desired position.
2. Load bale into the 2100 BALEBUSTER. (See Section 3.2.6 for a description of this procedure.)
3. Position the 2100 BALEBUSTER where you want to begin shredding the bale.
4. Engage the PTO, and increase tractor engine speed so PTO is at 1000 RPM.
5. Engage the bale conveyor, and check to see if the bale is turning in the right direction. The proper direction of bale rotation is indicated by the bale rotation decal located on the front of the 2100 BALEBUSTER.



NOTE: Operating tractor PTO at 1000 RPM allows machine to do a better job of chopping forage and also keeps a minimum of twine build-up on the rotor. Twine build-up should be kept to a minimum to reduce fire hazard.



NOTE: Operate bale conveyor to rotate the bale in direction indicated by arrow on the front shield. Reverse direction only if the bale is lodged or hesitates to turn.



CAUTION: Serious injury could result if machine is allowed to tip.

3.2.4 Normal shut-down procedure



WARNING: For your safety and the safety of others, you must use the following normal shut-down procedure before leaving the tractor controls unattended for any reason, including servicing, cleaning, or inspecting the 2100 BALEBUSTER. A variation of the following procedure may be used if so instructed within this manual or your tractor manual or if an extreme emergency requires it.

To shutdown the machine, perform the following steps:

1. Shut hydraulic drive off for chain conveyor.
2. Disengage PTO
3. Lower machine to ground level.
4. Place transmission in park or set park brake
5. Shut Off engine and remove key.
6. Wait for all movement to stop.

3.2.5 Unhitching the 2100 BALEBUSTER from a tractor

To unhitch the 2100 BALEBUSTER from a tractor, perform the following steps:

1. Run the 2100 BALEBUSTER until it is empty.
2. Shut-down the 2100 BALEBUSTER as described above, keeping the 2100 BALEBUSTER high enough to allow adjustment and lowering of the jackstands.
3. Remove the jackstand and pins, and turn jackstands 90° so that the machine can be supported by the jackstands. Reinstall the jackstands and pins on their brackets.
4. Lower machine until the 2100 BALEBUSTER rests on both jackstands.
5. Disconnect the hydraulic hoses from the tractor.



6. Disconnect the PTO from the tractor, and place the front half of the shaft into the bracket located on the front of the 2100 BALEBUSTER.
7. Disconnect the tractor lift arms from the 2100 BALEBUSTER.
8. Drive the tractor slowly away from the 2100 BALEBUSTER.

3.2.6 Loading bales into the 2100 BALEBUSTER

Figure 3.4
Bale loading sequence



To load bales into the 2100 BALEBUSTER, perform the following steps:



NOTE: The loading area should be flat and level.

1. Position the 2100 BALEBUSTER ahead and to the side of the bale. Extend the hydraulic cylinder, lowering the loading tines until they are on the ground.
2. Back up slowly, while centering the bale between the tines. Back up until the loader frame touches the front of the bale.
3. Retract the hydraulic cylinder slowly. The bale will roll into the shredding chamber.
4. Once the cylinder is completely retracted, the 2100 BALEBUSTER is ready to shred the bale.



3.3 Transportation and storage

This machine is designed to fold for ease of transportation and storage.

1. To fold rack and deflector, loader and tine frame:
 - a. Raise the deflector to it's highest position.
 - b. Unlock rock strap. Fold rack and deflector into chamber.
 - c. Tilt hinge frame hydraulically to allow loader tine frame to be folded into transport position. Lock tine frame pin in transport position.
 - d. Tilt hinge frame hydraulically into transport/storage position.
2. Use good judgment and drive slowly over rough or uneven terrain.
3. Be sure tractor brakes are properly adjusted and foot pedals are locked together.
4. Check your state laws regarding the use of lights, slow moving vehicle signs, safety chain and other possible requirements.



NOTE: A bracket is located on the front of the 2100 BALEBUSTER to hold the front half of the PTO shaft.

3.3.1 Preparing for storage



WARNING: When preparing machine for storage, use normal shutdown procedure.



tine frame pin in the locked transport position

Clean all mud, dirt, grease and other foreign material from the exterior of the machine. Cut all twine off from around the rotor. Wash the complete machine. If washing the 2100 BALEBUSTER with a high-pressure washer, keep the nozzle away from the sealed bearings. Repaint places where bare metal is exposed - this will inhibit rusting.

Place the parking stands in the down and in locked position. Block the rear axle up taking the weight off the tires, but do not deflate the tires. If possible, store the machine in a dry, protected place. If it is necessary to store the machine outside, cover it with waterproof canvas, plastic, or other suitable protective material.

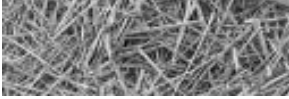


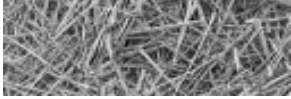
Figure 3.5
Location of parking stand,
shown in transport/working
position



Check the machine for any worn or broken parts. By ordering parts now, you will avoid delays when it is time to Check Coat exposed lift cylinder rod with grease. Oil chains on conveyor. Lubricate thoroughly according to lubrication instructions. Repack wheel bearings. Check the machine for broken parts. By ordering parts now, you will avoid delays when it is time to remove the machine from storage. When ordering parts always specify machine serial number and the part number of the replacement part. Part numbers can be found in the parts section of this manual.

3.3.2 Removing from storage (shipping position)

1. Remove all protective coverings.
2. Remove blocking from under 2100 BALEBUSTER. Check tire pressure.
3. Lubricate machine in accordance with lubrication instructions found in this manual.
4. Check all hydraulic hoses for deterioration and, if necessary, replace. Tighten any loose bolts, nuts and hydraulic fittings.
5. Follow pre-starting inspection instructions.



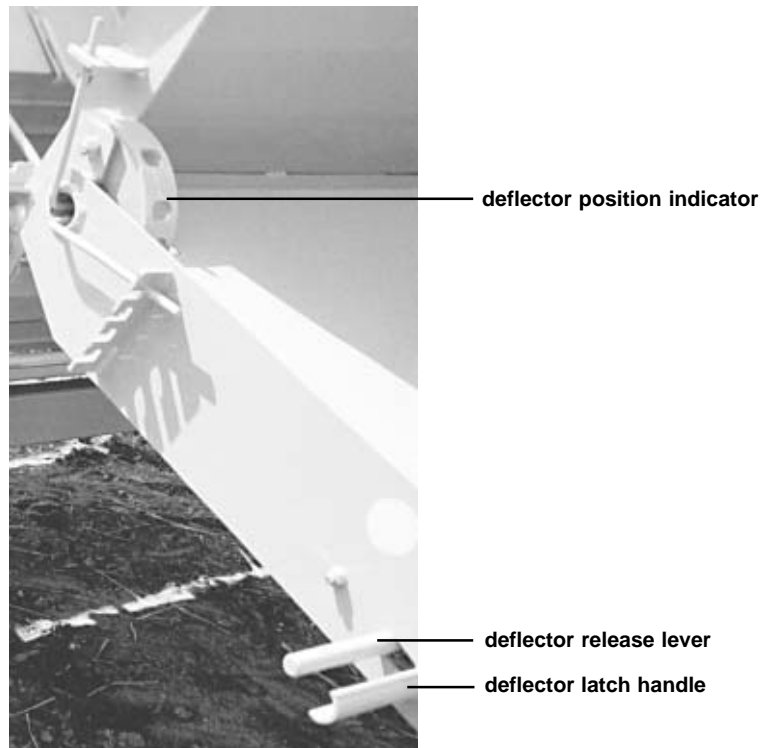
3.4 Adjusting the machine

3.4.1 Changing distribution pattern

The deflector can be positioned for creating a windrow, spreading, bunkfeeding, or stockpiling. Lower the deflector for a narrower windrow and raise the deflector for a wider spread.

To change the position, pull the release lever, rotate the deflector to the desired position and release the handle. A wider deflector belt (PN 8100819) is available for bunk feeding or additional material control.

Figure 3.6
deflector adjustments -
deflector release lever
and deflector latch
handle.



3.4.2 Changing length of cut

CHANGING STRIPPER PLATES

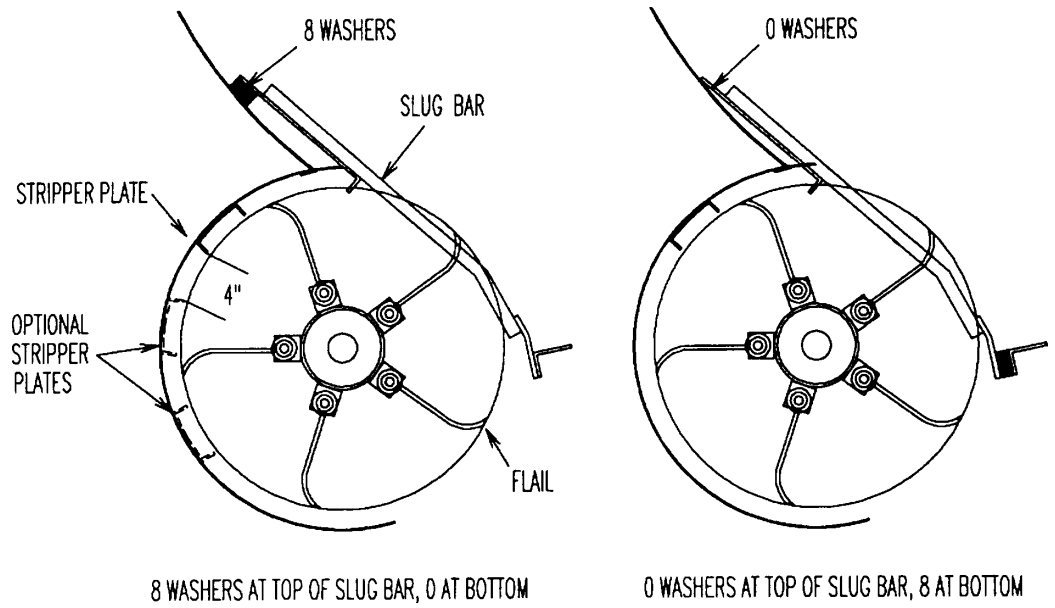
Adding stripper plates will produce a finer cut and removing plates will produce a coarser cut. (See **Figure 3.7** and **section 3.1.5**)

For a finer cut, one or two more stripper plates can be added. Space the added stripper plates 4" apart and drill five (5) 17/32" holes for each plate using the plate as a guide. Install the plate with five 1/2" x 1-1/2" bolts, flat washers, lock washers, and nuts.

In applications such as land reclamation, where a very coarse cut is desired, the stripper plate may be removed.



Figure 3.7
stripper plate position and
slug bar settings



CHANGING SLUG BAR SETTINGS

Exposing less flail will create a finer cut, while exposing more flail will create a coarser cut.

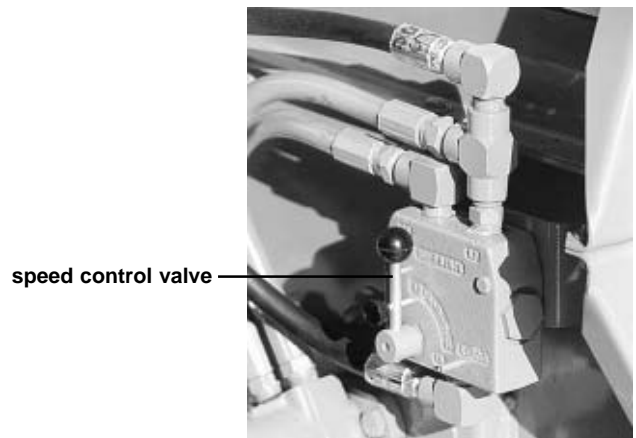
This is accomplished by moving flat washers from one end of each bar to the other end.

ADJUST CONVEYOR SPEED

Moving the lever counterclockwise will slow the conveyor, and make a finer product. Moving the lever clockwise will speed up the conveyor and make a coarser product.

For tractors with PFC type hydraulic systems:

This valve should be set in the full open position. Conveyor speed can be controlled directly from the tractor controls.





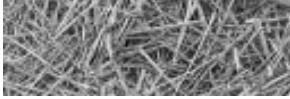
Section 4: General maintenance



CAUTION: Before performing any maintenance or adjustments make sure machine is NOT running. If for any reason arc welding is to be done, always ground cylinder to frame of machine to prevent arcing in bearings.

4.1 Maintenance and adjustments

1. Check for loose or badly worn bolts.
2. Check for loose or misaligned sprockets on bale conveyor.
3. Conveyor chain should be adjusted to allow lifting slat 1" to 1-1/2" above deck.
4. Follow Lubrication list in section 4.2.
5. Inspect rotor and all rotating parts for twine or wire build-up.
6. Check air pressure in tires, 40 psi. (2.76 bar)
7. Discharge deflector has adjusting straps to allow forage to be spread to any desired width. **(See section 3.4, "Adjusting the machine" for more information)**
8. Bale deflector has been preset at factory.
9. Slug bars in front of rotor may be adjusted to expose more or less of the flail knives by adding or subtracting washers. **(See section 3.4, "Adjusting the machine" for more information)**
10. Additional slug bars may be added to prevent slugs from going through rotor when shredding small or large square bales. A kit is available through your dealer.
11. Check wheel bearings, and seals.
12. Torque flail knife anchor bolts, 200 ft. Ibs. (27.65 Kg/m)
13. Relieve all pressure in the hydraulic system before disconnecting the lines or performing other work on the system. Make sure all connections are tight and lines are in good condition before applying pressure to the system.



4.2 Lubrication

Machine has 9 points to lubricate with grease every 15 hours of operating time. Use high grade lubricant.

- 1 Rotor bearings (2 lubrication points, see Figure 4.1)
- 2 P.T.O. universal joints and telescoping shaft (3 lubrication points, see Figure 4.2)
- 3 Main frame pivot bushings (2 lubrication points, see Figure 4.3)
- 4 Swivel wheel pivot (2 lubrication points, see Figure 4.4)



CAUTION: Always shut off machine before adjusting or lubricating.

Figure 4.1
Rotor bearing lubrication
point one of two

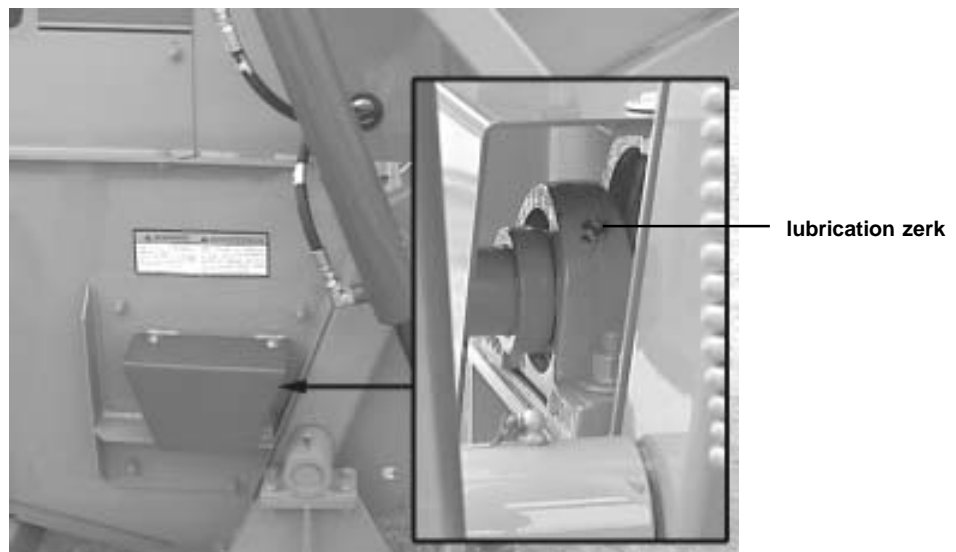
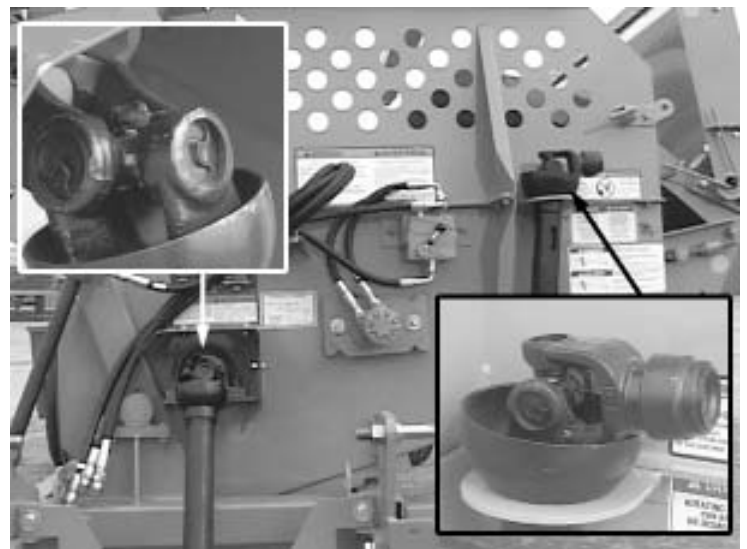


Figure 4.2
Location of PTO
universal joints and
telescoping shaft

there are three lubrication points
along the PTO universal joints and
telescoping shaft



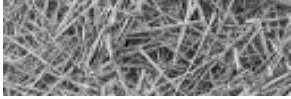


Figure 4.3
Main frame pivot bushing
lubrication point one of two

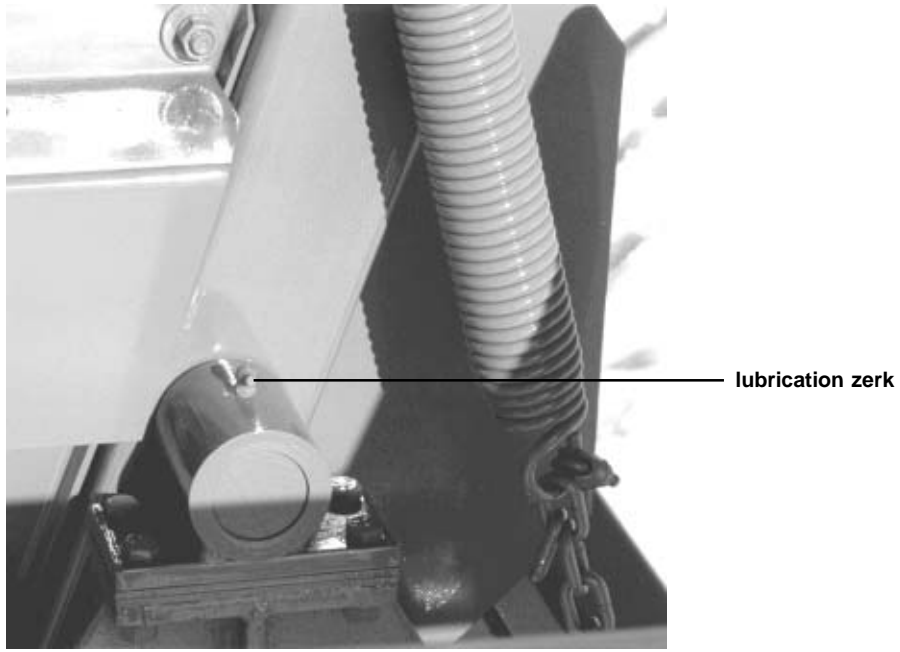
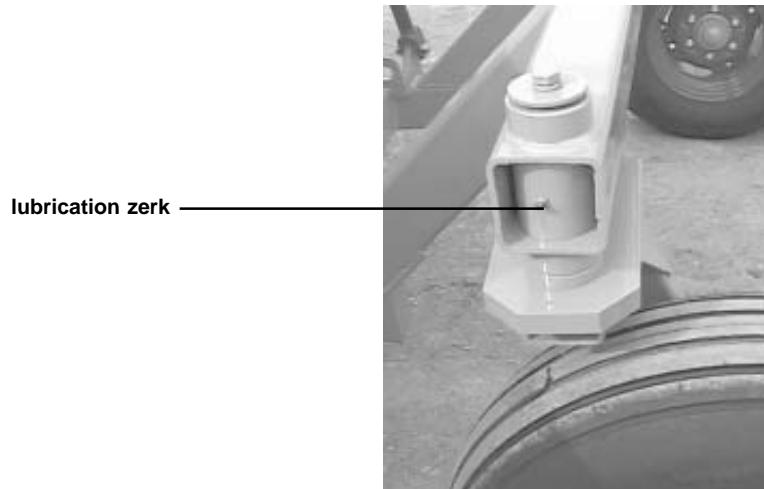


Figure 4.4
Swivel wheel pivot lubrication
point one of two

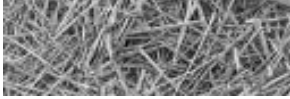


4.3 Axle, wheels, tires

Repack wheel bearings annually.

4.4 General appearance

Clean all mud, dirt, grease and other foreign material from the exterior of the machine. Cut all twine off the rotor. Wash the entire machine. If washing the 2100 BALEBUSTER with a high-pressure washer, keep the nozzle away from the sealed bearings. Repaint places where bare metal is exposed.



Section 5: Troubleshooting

PROBLEM	CAUSE	REMEDY
1. No Capacity	1. Bale turning too slow.	1. Open flow control valve.
2. Bale Does Not Turn	1. Bale lodged in feeder.	1. Reverse rotation of slat conveyor.
3. Excessive Vibration	1. Broken flail.	1. Replace flail.
	2. Defective cylinder bearing.	2. Replace bearing.
	3. Misaligned or worn PTO.	3. Replace worn part or complete PTO.
4. Machine Will Not Lift Bale	1. Tractor hydraulic pressure too low.	1. Check pressure.
	2. Hydraulic oil leaking by piston in cylinder.	2. Repair or replace hydraulic cylinder.
5. Forage Too Coarse	1. Conveyor speed too fast.	1. Decrease conveyor speed.
	2. Slug bar set too low.	2. Raise slug bar to expose less flail.
	3. Stripper bar removed.	3. Replace or add additional stripper bar.
6. Forage Too Fine	1. Conveyor speed too slow.	1. Increase conveyor speed.
	2. Slug bar set too high.	2. Lower slug bar to expose more flail.
	3. Extra stripper bar installed.	3. Remove one or all stripper bars.
7. Forage Blows Past Bunk When Bunk Feeding	1. Deflector too high.	1. Lower deflector. Add (optional) 18-x73-3/4" deflector belting.





Appendix A: WARRANTY

DuraTech Industries International Inc. warrants to the original purchaser for one year from purchase date that this product will be free from defects in material and workmanship when used as intended and under normal maintenance and operating conditions. This warranty is limited to the replacement of any defective part or parts returned to our factory in Jamestown, N.D., within thirty (30) days of failure.

This warranty shall become void if in DuraTech Industries International, Inc.'s, judgment the machine has been subject to misuse, negligence, alterations, damaged by accident or lack of required normal maintenance, or if the product has been used for a purpose for which it was not designed.

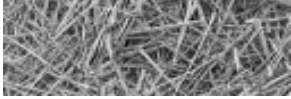
All claims for warranty must be made through the dealer which originally sold the product and all warranty adjustments must be made through same.

This warranty does not apply to tires or bearings or any other trade accessories not manufactured by DuraTech Industries International Inc.'s. Buyer must rely solely on the existing warranty, if any, of these respective manufactures.

DuraTech Industries International Inc., shall **not** be held liable for damages of any kind, direct, contingent, or consequential to property under this warranty. DuraTech Industries International Inc., cannot be held liable for any damages resulting from causes beyond its control. DuraTech Industries International Inc., shall **not** be held liable under this warranty for loss of crops, or rental costs or any expense or loss for labor or supplies.

DuraTech Industries International Inc., reserves the right to make changes in material and/or designs of this product at any time without notice.

All other warranties made with respect to this product, either expressed or implied, are hereby disclaimed by DuraTech Industries International Inc.



Appendix B: 2100 BALEBUSTER Specifications

General

Tractor H.P. Required See BEFORE OPERATING Min. 60 H.P.
 Capacity 5-1/2 Ft. Long x 6-1/2 Ft. Dia., 1500 Lbs.
 Rotor Length 78" (198 cm)
 Rotor Diameter 25-1/2" (65 cm)
 Rotor Bearings - Ball 1-3/4" (4.45 cm)
 Knives- Heat-Treated 30
 Caster Wheel - Taper Roller Bearings - Tire Size 9.5 L x 14 8-Ply

Working Position:

Length 153" (389 cm)
 Width 156-1/2" (398 cm)
 Height 116-3/4" (297 cm)

Transport Position:

Length 153" (389 cm)
 With Caster Wheel Removed 101" (257 cm)
 Width w/Deflector Folded 122-3/4" (312 cm)
 Width w/Tines and Deflector Folded 101" (257 cm)
 Height 80-1/4" (204 cm)
 2 Point Hookup
 P.T.O 1000 R.P.M.
 Dual Hydraulics (single hydraulic system optional) 1800 psi (124 bar)
 Cylinder (2) 2-1/2" x 16" Double Acting

Options

CAT II/III Quick Attach Bracket
 Wide Deflector Belting
 Stripper plate

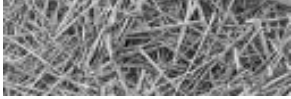


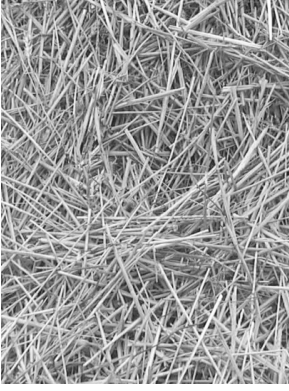
Appendix C: Required For Operation



WARNING: Do not operate the 2100 BALEBUSTER unless the tractor complies with the following requirements:

1. Horsepower - 60 HP minimum.
2. Rollover protective structure and seat belts.
3. Hydraulic system - 8 gallons per minute (30 liters per minute) minimum, 1,800-Psi minimum (124 bar) two-way valves.
4. Two double acting control valves.
5. The tractor must be of equal or greater weight than the 2100 BALEBUSTER and bale to assure adequate braking and steering control.
6. Counterbalance weight - It may be necessary to add weight to the front end of your tractor to maintain adequate tractor stability and control. At least 20% of the total weight must remain on the front axle.





HAYBUSTER[®]

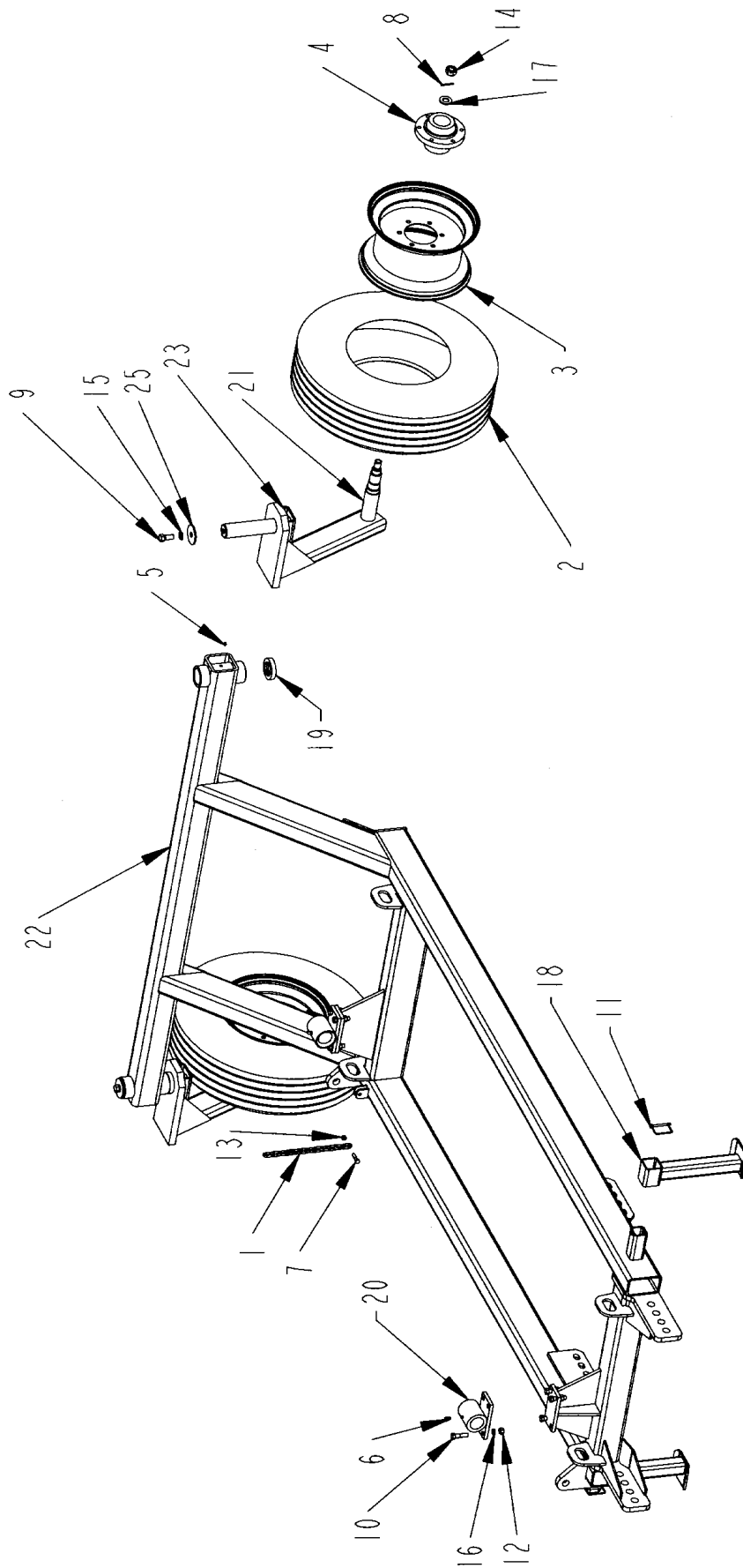
2100

BALEBUSTER[™]

SERIAL NUMBER 21CJ010100 AND UP

**Part 2:
Parts Reference**

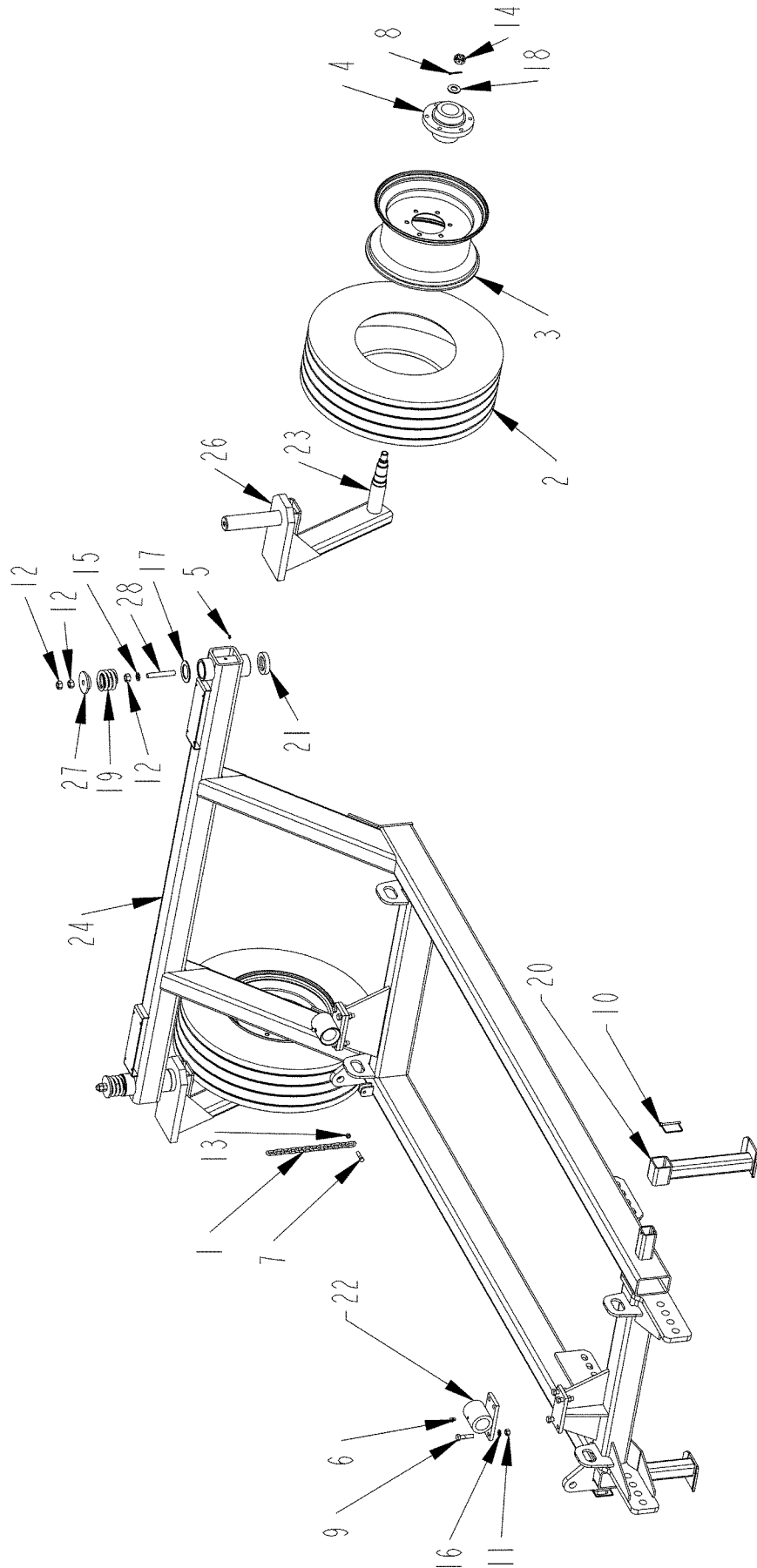
MAIN FRAME ASSEMBLY THRU S.N. 21-HJ-89000



MAIN FRAME ASSEMBLY THRU S.N. 21-HJ-89000

ITEM	PART NO.	QTY.	DESCRIPTION
1	1100248	1	CHAIN\SPRING ARM
2	2600013	2	TIRE\9.5LX14\8PLY
3	2600601	2	WHL\6-BOLT\14X8
2&3	2600825	2	WHL\IMP\9.5X14\TIRE&RIM
4	2900069	2	HUB\6BOLT\631\COMP
5	3800041	2	FTG\LUB\1/8MPXZERK\ADAPT
6	3800044	2	FTG\LUB\1/8MPXZRK\90D
7	4800034	1	BOLT\HEX\3/8X1-1/2
8	4800044	2	PIN\COT\5/32X1-1/2
9	4800106	2	BOLT\HEX\5/8X1-1/2
10	4800114	8	BOLT\HEX\1/2X2
11	4800911	2	PIN\LYNCH\1/4X2-1/2\
12	4900001	8	NUT\HEX\1/2\NC
13	4900023	1	NUT\TPLCK\3/8\NC
14	4900054	2	NUT\CASTLE\1/2\NF
15	5000003	2	WASH\LOCK\5/8
16	5000006	8	WASH\LOCK\1/2
17	5000055	2	WASH\SPINDLE\7/8
18	8100053	2	BRKT\STAND\FRAME
19	8100055	2	WASH\THRUST\WHL\SWVL
20	8100058	2	MNT\HINGE\SHRDR
21	8100634		SPINDLE\12X2\BALEPROCESSOR
22	8101110	1	FRM\MN\2100
23	8101125	2	SHANK\WHEEL\SWIVEL\2100
24	8101151	1	FRM\ASSY\2100
25	8400044	2	WASH\RETAIN\3X5/8ID\WHL
26	7500186	4	BUSH\BRASS\SWIVEL WHEEL(Not Shown)

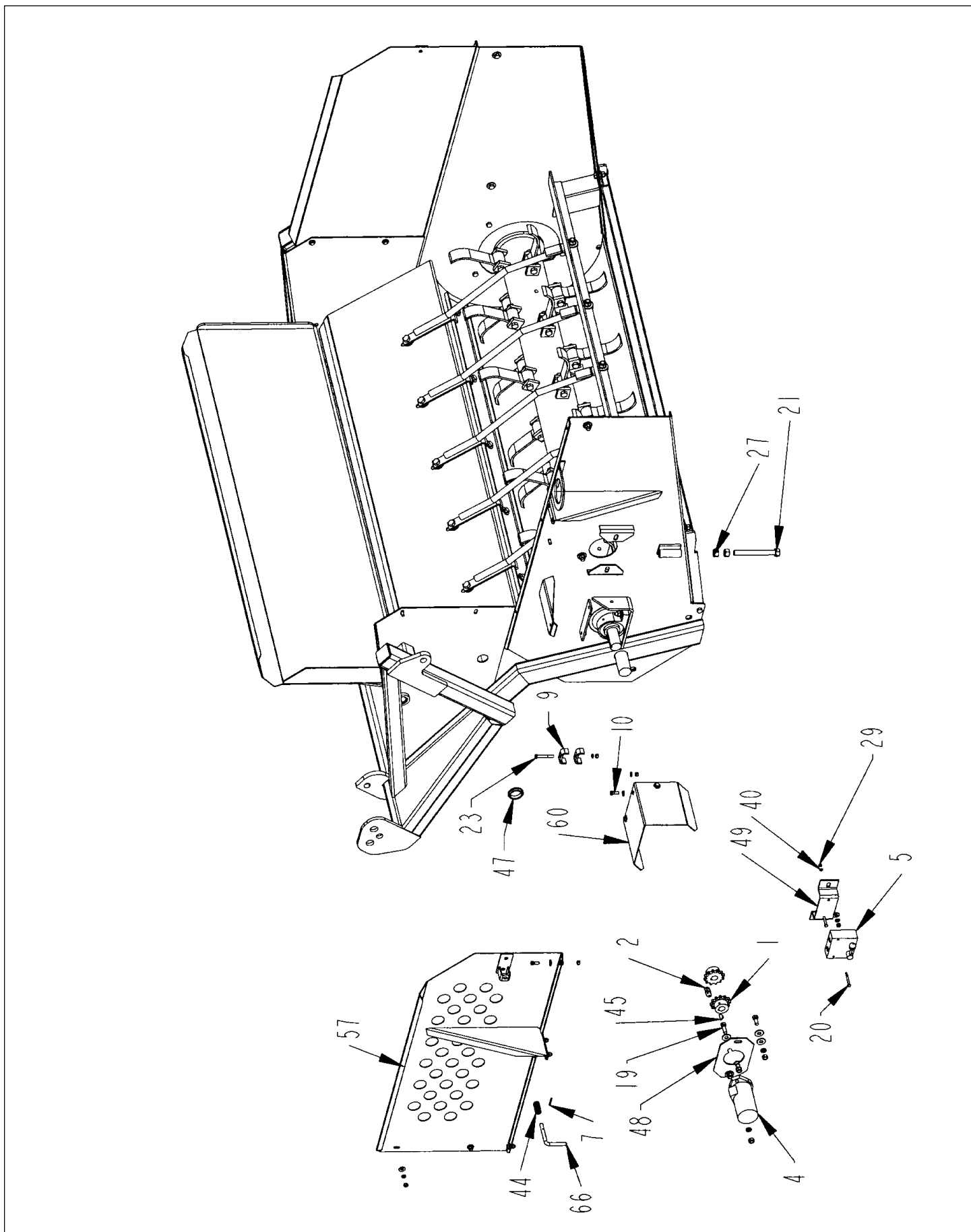
MAIN FRAME ASSEMBLY S.N. 21-IJ-89100 AND UP



MAIN FRAME ASSEMBLY S.N. 21-IJ-89100 AND UP

ITEM	PART NO.	QTY.	DESCRIPTION
1	1100248	1	CHAIN\SPRING ARM
2	2600013	2	TIRE\9.5LX14\8PLY
3	2600601	2	WHL\6-BOLT\14X8
2&3	2600825	2	WHL\IMP\9.5X14\TIRE&RIM
4	2900069	2	HUB\6BOLT\631\COMP
5	3800041	2	FTG\LUB\1/8MPXZERK\ADAPT
6	3800044	2	FTG\LUB\1/8MPXZRK\90D
7	4800034	1	BOLT\HEX\3/8X1-1/2
8	4800044	2	PIN\COT\5/32X1-1/2
9	4800114	8	BOLT\HEX\1/2X2
10	4800911	2	PIN\LYNCH\1/4X2-1/2\
11	4900001	8	NUT\HEX\1/2\NC
12	4900005	6	NUT\HEX\5/8\NC
13	4900023	1	NUT\TPLCK\3/8\NC
14	4900054	2	NUT\CASTLE\1/2\NF
15	5000003	2	WASH\LOCK\5/8
16	5000006	8	WASH\LOCK\1/2
17	5000032	2	WASH\MACH\2IDX10GA
18	5000055	2	WASH\SPINDLE\7/8
19	6100044	2	SPRNG\2-1/16X3/8WIRE2"LG
20	8100053	2	BRKT\STAND\FRAME
21	8100055	2	WASH\THRUST\WHL\SWVL
22	8100058	2	MNT\HINGE\SHRDR
23	8100634	2	SPINDLE\12X2\BALEPROCESSOR
24	8101110	1	FRMMN\2100
25	8101151	1	FRAME\ASSY
26	8101329	2	FRM\WHEEL\SWIVEL
27	8400281	2	CAP\RECESSED\WHL\SWIVEL
28	8400282	2	ROD\THRDD\5/8X4
29	7500186	4	BUSH\BRASS\SWIVEL WHEEL(Not Shown)

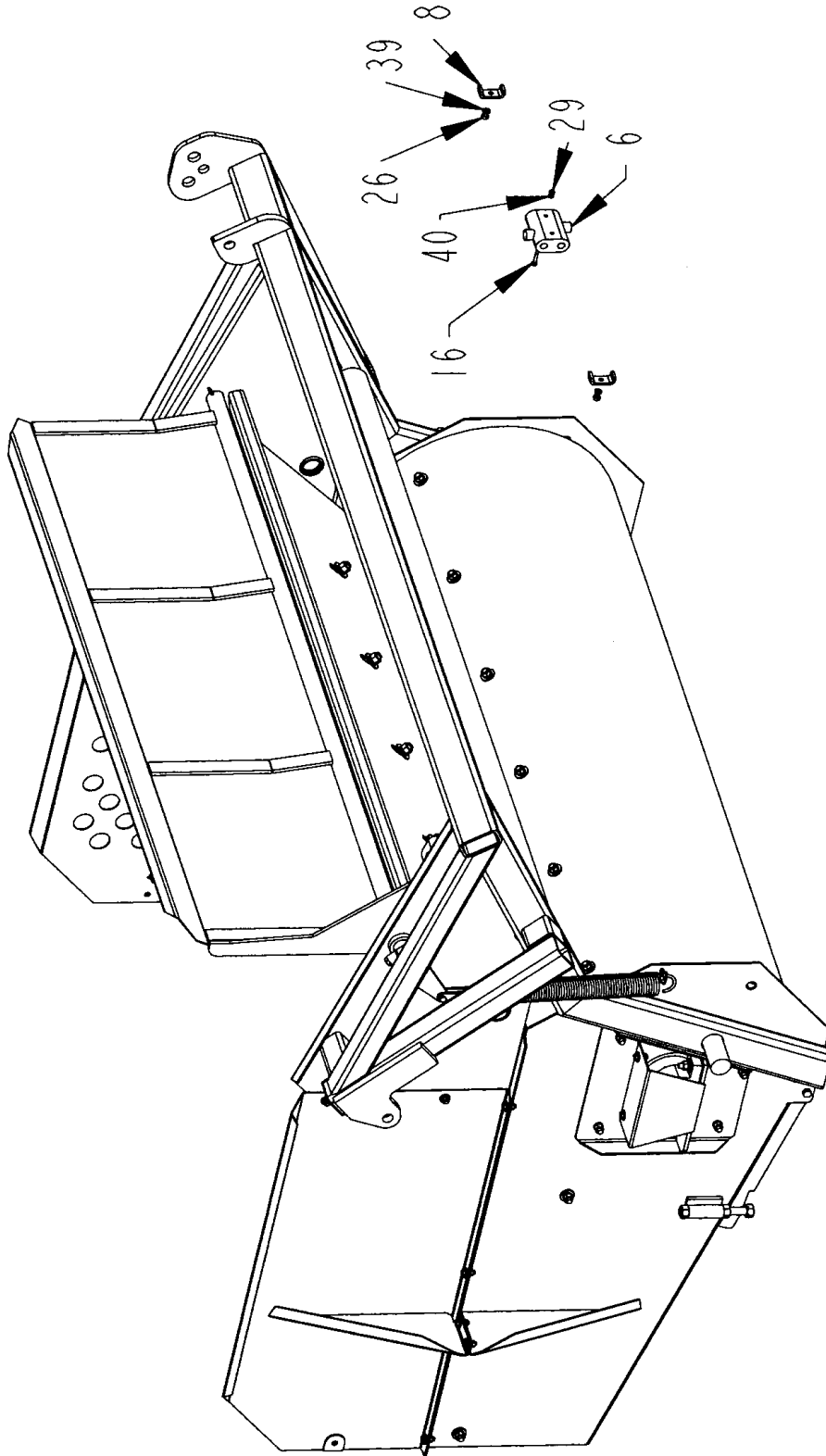
SHREDDER FRONT ASSEMBLY



SHREDDER FRONT ASSEMBLY

ITEM	PART NO.	QTY.	DESCRIPTION
1	1000233	2	SPKT\60B\12\1\1\4KW
2	1100240	1	CHAIN\60\12\CPLNGW-CL
3	2000514	2	BRG\PB\1-3/4\2BOLT\MALLEABLE
4	3900025	1	MOTOR\HYD\17.9\H\AMNT\7/8FOR\1SHFT
5	4000213	1	VALVE\CONTROL\FLOW\3/4FOR
6	4000234	1	VALVE\RELIEF\CROSS\RC13BB\1000&1800PSI
7	4500256	1	PIN\RLLD\3\16X1-1/2
8	4700776	2	CLMP\HOSE\3/8
9	4700777	2	CLMP\HOSE\1/2
10	4800003	21	BOLT\HEX\3/8X1
11	4800010	10	BOLT\HEX\5/8X2
12	4800018	20	BOLT\HEX\1/2X1-1/4
13	4800027	1	CLAMP\CBL\1/4
14	4800034	2	BOLT\HEX\3/8X1-1/2
15	4800043	2	PIN\COT\1/4X2-1/2
16	4800055	2	BOLT\HEX\1/4X2
17	4800068	1	BOLT\HEX\1/2X3
18	4800070	4	BOLT\HEX\1/2X2-1/2
19	4800082	2	BOLT\HEX\1/2X1-1/2
20	4800101	2	BOLT\HEX\1/4X2-1/2
21	4800102	2	BLOT\ADJ\3/4X7\SPCL
22	4800139	1	BOLT\HEX\3/4X4-1/2
23	4800514	1	BOLT\HEX\3/8X2-3/4
24	4800598	30	BOLT\HEX\5/8X4\NF\GR8
25	4900001	25	NUT\HEX\1/2\NC
26	4900002	24	NUT\HEX\3/8\NC
27	4900004	6	NUT\HEX\3/4\NC
28	4900005	10	NUT\HEX\5/8\NC
29	4900009	4	NUT\HEX\1/4\NC
30	4900014	2	NUT\TPLCK\1/2\NC
31	4900023	2	NUT\TPLCK\3/8\NC
32	4900139	1	NUT\TPLCK\3/4\GR8\NC
33	4900179	30	NUT\TPLCK\RTR\5/8\NF\GR9
34	5000001	29	WASH\FLAT\3/8
35	5000002	50	WASH\FLAT\5/8
36	5000003	10	WASH\LOCK\5/8
37	5000004	34	WASH\FLAT\1/2
38	5000006	25	WASH\LOCK\1/2
39	5000019	24	WASH\LOCK\3/8
40	5000024	4	WASH\LOCK\1/4
41	5200012	30	HMMR\FLAIL\8\HEAVY
42	6100005	1	SPRNG\.249OT\13\16ID\1-5\16OD\2-3\8LOA
43	6100013	1	SPG\BGGR\TENS\2.25OD\.31WD\18LOH
44	6100031	1	SPRING\COMP\.072W\25\32OD
45	6200011	1	KEY\WDF\1\4X1
46	7500223	30	BUSH\FLAIL\1-1/4X5\8IDX2L
47	7500360	2	GRMT\RBBR\2X1.75IDX1/4T
48	8100036	1	MNT\MTR\HYD
49	8100037	1	MNT\VALVE\FLOW CONTROL
50	8100762	1	RTR\FLAIL\78-3/8\2640
51	8100793	1	CHNNL\STRIPPER\SHREADER
52	8101105	1	SHRDR\256-3PT\2002
53	8101113	1	DOOR\SHRDR\256-3PT
54	8101118	1	MNT\REAR\RTR\256-3PT
55	8101119	1	BALEGUIDE\256-3PT
56	8101123	2	SPG\ANCHOR
57	8101128	1	SHLD\FRONT\2100
58	8101129	1	SHLD\REAR\256
59	8101143	1	SHLD\REAR\RTR\2100
60	8101144	1	SHLD\PTO\256-3PT
61	8101152	1	SHRDR\ASSY\2100
62	8101159	5	SLUGBAR\2100
63	8101176	1	BRKT\SPRING\BALEGUIDE
64	4800027	1	CLAMP\CBL\1/4
65	4800027	1	CLAMP\CBL\1/4
66	8101142	1	PIN\LATCH\RACKSTRAP
67	7500223	30	BUSH\FLAIL\1-1/4X5\8IDX2L

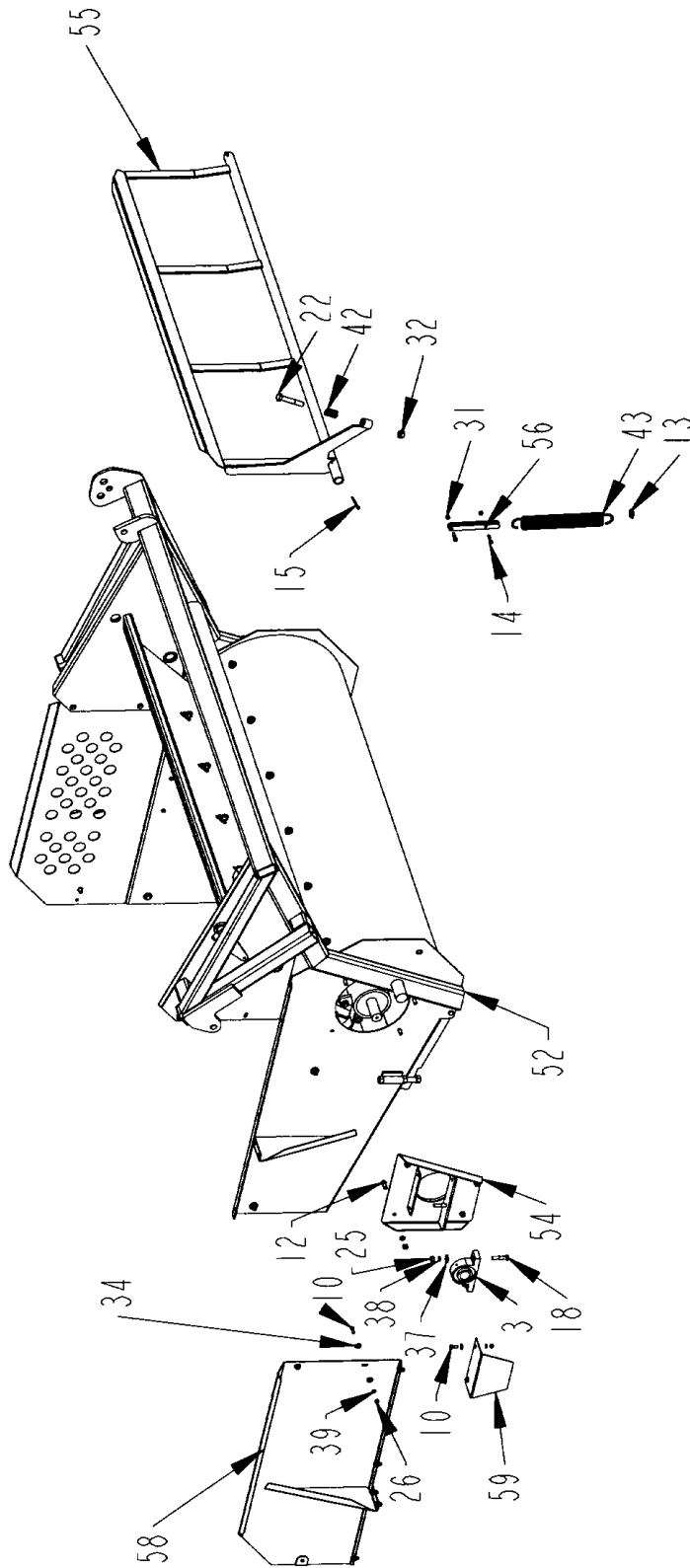
PRESSURE RELIEF VALVE



PRESSURE RELIEF VALVE

ITEM	PART NO.	QTY.	DESCRIPTION
1	1000233	2	SPKT\60\B\12\1\1\4KW
2	1100240	1	CHAIN\60\12\CPLNG\W-CL
3	2000514	2	BRG\PB\1-3/4\2BOLT\MALLEABLE
4	3900025	1	MOTOR\HYD\17.9\HAMNT\7/8FOR\1SHFT
5	4000213	1	VALVE\CONTROL\FLOW\3/4FOR
6	4000234	1	VALVE\RELIEF\CROSS\RC13BB\1000&1800PSI
7	4500256	1	PIN\RLLD\3/16X1-1/2
8	4700776	2	CLMP\HOSE\3/8
9	4700777	2	CLMP\HOSE\1/2
10	4800003	21	BOLT\HEX\3/8X1
11	4800010	10	BOLT\HEX\5/8X2
12	4800018	20	BOLT\HEX\1/2X1-1/4
13	4800027	1	CLAMP\CBL\1/4
14	4800034	2	BOLT\HEX\3/8X1-1/2
15	4800043	2	PIN\COT\1/4X2-1/2
16	4800055	2	BOLT\HEX\1/4X2
17	4800068	1	BOLT\HEX\1/2X3
18	4800070	4	BOLT\HEX\1/2X2-1/2
19	4800082	2	BOLT\HEX\1/2X1-1/2
20	4800101	2	BOLT\HEX\1/4X2-1/2
21	4800102	2	BLOT\ADJ\3/4X7\SPCL
22	4800139	1	BOLT\HEX\3/4X4-1/2
23	4800514	1	BOLT\HEX\3/8X2-3/4
24	4800598	30	BOLT\HEX\5/8X4\NF\GR8
25	4900001	25	NUT\HEX\1/2\NC
26	4900002	24	NUT\HEX\3/8\NC
27	4900004	6	NUT\HEX\3/4\NC
28	4900005	10	NUT\HEX\5/8\NC
29	4900009	4	NUT\HEX\1/4\NC
30	4900014	2	NUT\TPLCK\1/2\NC
31	4900023	2	NUT\TPLCK\3/8\NC
32	4900139	1	NUT\TPLCK\3/4\GR8\NC
33	4900179	30	NUT\TPLCK\RTR\5/8\NF\GR9
34	5000001	29	WASH\FLAT\3/8
35	5000002	50	WASH\FLAT\5/8
36	5000003	10	WASH\LOCK\5/8
37	5000004	34	WASH\FLAT\1/2
38	5000006	25	WASH\LOCK\1/2
39	5000019	24	WASH\LOCK\3/8
40	5000024	4	WASH\LOCK\1/4
41	5200012	30	HMMR\FLAIL\8"HEAVY
42	6100005	1	SPRNG\.249OT\13/16ID\1-5/16OD\2-3/8LOA
43	6100013	1	1 O.D. X 4 5/16 SPRING
44	6100031	1	SPRING\COMPL.072W\25/32OD
45	6200011	1	KEY\WDF\1/4X1
46	7500223	30	BUSH\FLAIL\1-1/4X5/8IDX2L
47	7500360	2	GRMT\RBBR\2X1.75IDX1/4T
48	8100036	1	MNT\MTR\HYD
49	8100037	1	MNT\VALVE\FLOW CONTROL
50	8100762	1	RTR\FLAIL\78-3/8\2640
51	8100793	1	CHNNL\STRIPPER\SHREADER
52	8101105	1	SHRDR\256-3PT\2002
53	8101113	1	DOOR\SHRDR\256-3PT
54	8101118	1	MNT\REAR\RTR\256-3PT
55	8101119	1	BALEGUIDE\256-3PT
56	8101123	2	SPG\ANCHOR
57	8101128	1	SHLD\FRONT\2100
58	8101129	1	SHLD\REAR\256
59	8101143	1	SHLD\REAR\RTR\2100
60	8101144	1	SHLD\PTO\256-3PT
61	8101152	1	SHRDR\ASSY\2100
62	8101159	5	SLUGBAR\2100
63	8101176	1	BRKT\SPRING\BALEGUIDE
64	4800027	1	CLAMP\CBL\1/4
65	4800027	1	CLAMP\CBL\1/4
66	8101142	1	PIN\LATCH\RACKSTRAP
67	7500223	30	BUSH\FLAIL\1-1/4X5/8IDX2L

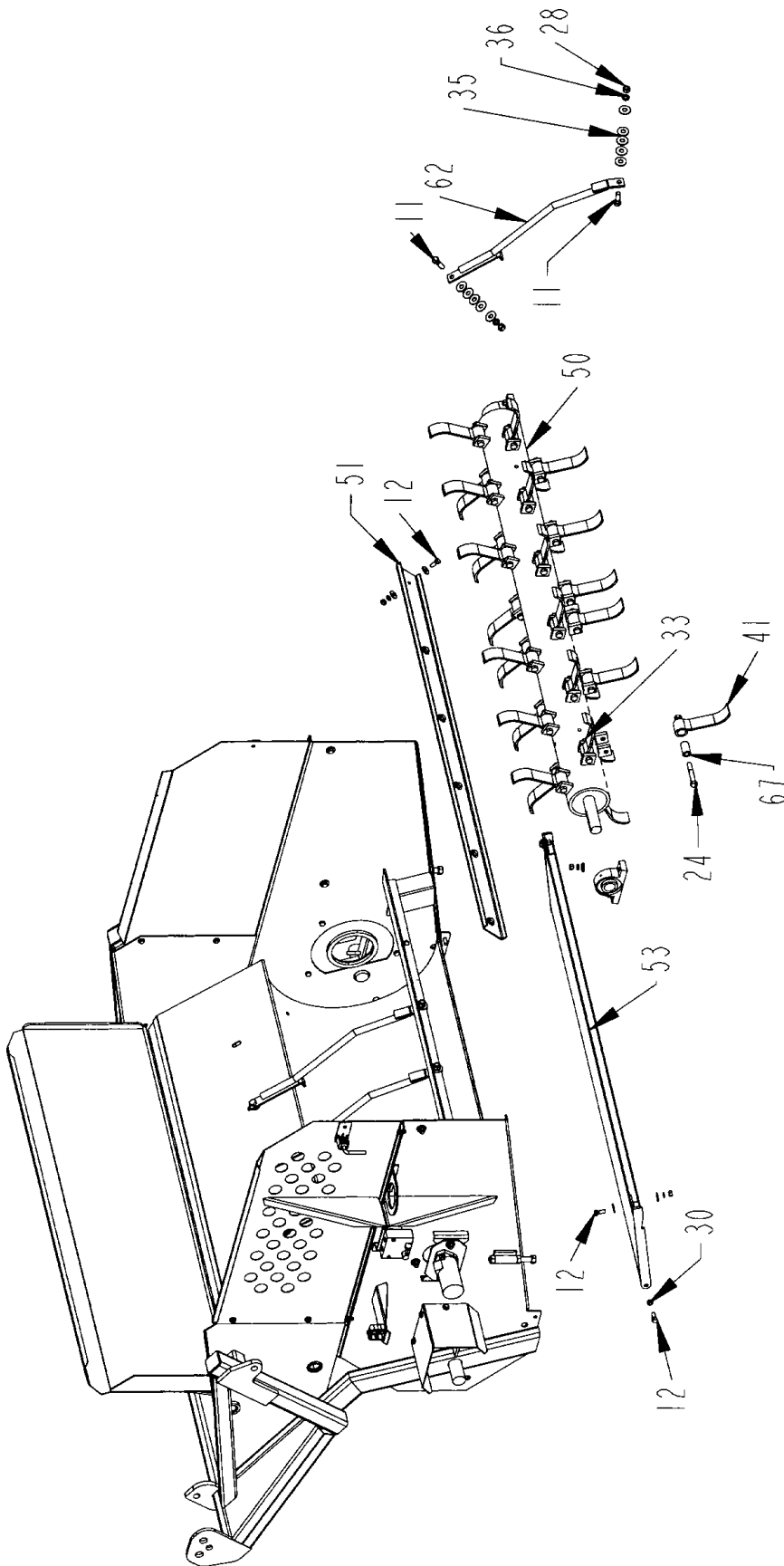
REAR BEARING AND BALE GUIDE ASSEMBLY



REAR BEARING AND BALE GUIDE ASSEMBLY

ITEM	PART NO.	QTY.	DESCRIPTION
1	1000233	2	SPKT\60\B\12\1\1\4KW
2	1100240	1	CHAIN\60\12\CPLNG\W-CL
3	2000514	2	BRG\PB\1-3\4\2BOLT\MALLEABLE
4	3900025	1	MOTOR\HYD\17.9\H\AMNT\7\8FOR\1SHFT
5	4000213	1	VALVE\CONTROL\FLOW\3\4FOR
6	4000234	1	VALVE\RELIEF\CROSS\RC13BB\1000&1800PSI
7	4500256	1	PIN\RLLD\3\16X1-1/2
8	4700776	2	CLMP\HOSE\3\8
9	4700777	2	CLMP\HOSE\1\2
10	4800003	21	BOLT\HEX\3\8X1
11	4800010	10	BOLT\HEX\5\8X2
12	4800018	20	BOLT\HEX\1\2X1-1/4
13	4800027	1	CLAMP\CBL\1\4
14	4800034	2	BOLT\HEX\3\8X1-1/2
15	4800043	2	PIN\COT\1\4X2-1/2
16	4800055	2	BOLT\HEX\1\4X2
17	4800068	1	BOLT\HEX\1\2X3
18	4800070	4	BOLT\HEX\1\2X2-1/2
19	4800082	2	BOLT\HEX\1\2X1-1/2
20	4800101	2	BOLT\HEX\1\4X2-1/2
21	4800102	2	BLOT\ADJ\3\4X7\SPCL
22	4800139	1	BOLT\HEX\3\4X4-1/2
23	4800514	1	BOLT\HEX\3\8X2-3\4
24	4800598	30	BOLT\HEX\5\8X4\NF\GR8
25	4900001	25	NUT\HEX\1\2\INC
26	4900002	24	NUT\HEX\3\8\INC
27	4900004	6	NUT\HEX\3\4\INC
28	4900005	10	NUT\HEX\5\8\INC
29	4900009	4	NUT\HEX\1\4\INC
30	4900014	2	NUT\TPLCK\1\2\INC
31	4900023	2	NUT\TPLCK\3\8\INC
32	4900139	1	NUT\TPLCK\3\4\GR8\INC
33	4900179	30	NUT\TPLCK\RTR\5\8\NF\GR9
34	5000001	29	WASH\FLAT\3\8
35	5000002	50	WASH\FLAT\5\8
36	5000003	10	WASH\LOCK\5\8
37	5000004	34	WASH\FLAT\1\2
38	5000006	25	WASH\LOCK\1\2
39	5000019	24	WASH\LOCK\3\8
40	5000024	4	WASH\LOCK\1\4
41	5200012	30	HMMR\FLAIL\8"HEAVY
42	6100005	1	SPRNG\.249OT\13\16ID\1-5\16OD\2-3\8LOA
43	6100013	1	1 O.D. X 4 5\16 SPRING
44	6100031	1	SPRING\COMP\.072W\25\32OD
45	6200011	1	KEY\WDF\1\4X1
46	7500223	30	BUSH\FLAIL\1-1\4X5\8IDX2L
47	7500360	2	GRMT\RBBR\2X1.75IDX1\4T
48	8100036	1	MNT\MTR\HYD
49	8100037	1	MNT\VALVE\FLOW CONTROL
50	8100762	1	RTR\FLAIL\78-3\8\2640
51	8100793	1	CHNNL\STRIPPER\SHREADER
52	8101105	1	SHRDR\256-3PT\2002
53	8101113	1	DOOR\SHRDR\256-3PT
54	8101118	1	MNT\REAR\RTR\256-3PT
55	8101119	1	BALEGUIDE\256-3PT
56	8101123	2	SPG\ANCHOR
57	8101128	1	SHLD\FRONT\2100
58	8101129	1	SHLD\REAR\256
59	8101143	1	SHLD\REAR\RTR\2100
60	8101144	1	SHLD\PTO\256-3PT
61	8101152	1	SHRDR\ASSY\2100
62	8101159	5	SLUGBAR\2100
63	8101176	1	BRKT\SPRING\BALEGUIDE
64	4800027	1	CLAMP\CBL\1\4
65	4800027	1	CLAMP\CBL\1\4
66	8101142	1	PIN\LATCH\RACKSTRAP
67	7500223	30	BUSH\FLAIL\1-1\4X5\8IDX2L

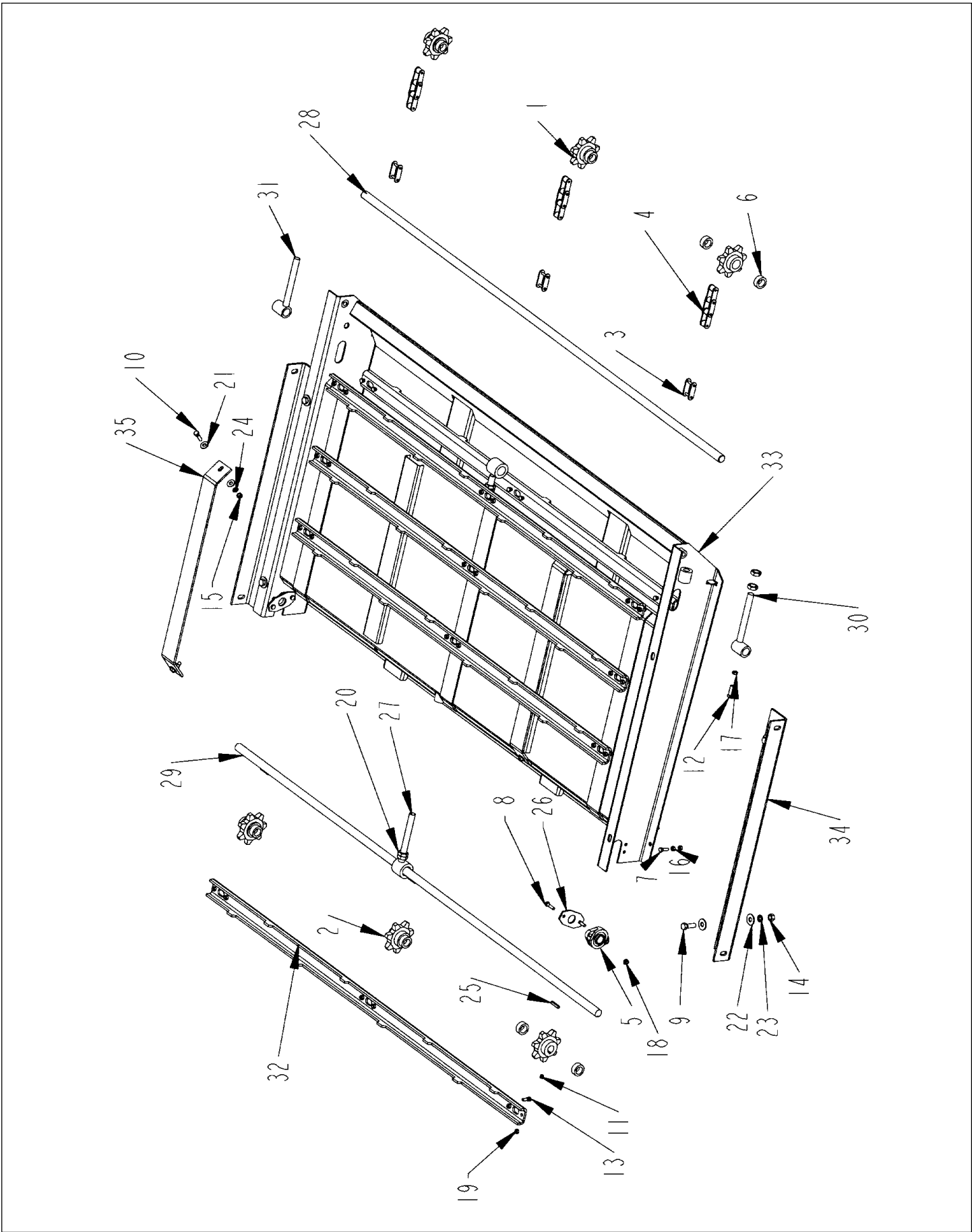
ROTOR ASSEMBLY



ROTOR ASSEMBLY

ITEM	PART NO.	QTY.	DESCRIPTION
1	1000233	2	SPKT\60\B\12\11\1/4KW
2	1100240	1	CHAIN\60\12\CPLNG\W-CL
3	2000514	2	BRG\PB\1-3/4\2BOLT\MALLEABLE
4	3900025	1	MOTOR\HYD\17.9\H\AMNT\7/8FOR\1SHFT
5	4000213	1	VALVE\CONTROL\FLOW\3/4FOR
6	4000234	1	VALVE\RELIEF\CROSS\RC13BB\1000&1800PSI
7	4500256	1	PIN\RLLD\3/16X1-1/2
8	4700776	2	CLMP\HOSE\3/8
9	4700777	2	CLMP\HOSE\1/2
10	4800003	21	BOLT\HEX\3/8X1
11	4800010	10	BOLT\HEX\5/8X2
12	4800018	20	BOLT\HEX\1/2X1-1/4
13	4800027	1	CLAMP\CBL\1/4
14	4800034	2	BOLT\HEX\3/8X1-1/2
15	4800043	2	PIN\COT\1/4X2-1/2
16	4800055	2	BOLT\HEX\1/4X2
17	4800068	1	BOLT\HEX\1/2X3
18	4800070	4	BOLT\HEX\1/2X2-1/2
19	4800082	2	BOLT\HEX\1/2X1-1/2
20	4800101	2	BOLT\HEX\1/4X2-1/2
21	4800102	2	BLOT\ADJ\3/4X7\SPCL
22	4800139	1	BOLT\HEX\3/4X4-1/2
23	4800514	1	BOLT\HEX\3/8X2-3/4
24	4800598	30	BOLT\HEX\5/8X4\NF\GR8
25	4900001	25	NUT\HEX\1/2\NC
26	4900002	24	NUT\HEX\3/8\NC
27	4900004	6	NUT\HEX\3/4\NC
28	4900005	10	NUT\HEX\5/8\NC
29	4900009	4	NUT\HEX\1/4\NC
30	4900014	2	NUT\TPLCK\1/2\NC
31	4900023	2	NUT\TPLCK\3/8\NC
32	4900139	1	NUT\TPLCK\3/4\GR8\NC
33	4900179	30	NUT\TPLCK\RTR\5/8\NF\GR9
34	5000001	29	WASH\FLAT\3/8
35	5000002	50	WASH\FLAT\5/8
36	5000003	10	WASH\LOCK\5/8
37	5000004	34	WASH\FLAT\1/2
38	5000006	25	WASH\LOCK\1/2
39	5000019	24	WASH\LOCK\3/8
40	5000024	4	WASH\LOCK\1/4
41	5200012	30	HMMR\FLAIL\8"\HEAVY
42	6100005	1	SPRNG\ .249OT\13/16ID\1-5/16OD\2-3/8LOA
43	6100013	1	1 O.D. X 4 5/16 SPRING
44	6100031	1	SPRING\COMP\ .072W\25/32OD
45	6200011	1	KEY\WDF\1/4X1
46	7500223	30	BUSH\FLAIL\1-1/4X5/8IDX2L
47	7500360	2	GRMT\RBBR\2X1.75IDX1/4T
48	8100036	1	MNT\MTR\HYD
49	8100037	1	MNT\VALVE\FLOW CONTROL
50	8100762	1	RTR\FLAIL\78-3/8\2640
51	8100793	1	CHNNL\STRIPPER\SHREADER
52	8101105	1	SHRDR\256-3PT\2002
53	8101113	1	DOOR\SHRDR\256-3PT
54	8101118	1	MNT\REAR\RTR\256-3PT
55	8101119	1	BALEGUIDE\256-3PT
56	8101123	2	SPG\ANCHOR
57	8101128	1	SHLD\FRONT\2100
58	8101129	1	SHLD\REAR\256
59	8101143	1	SHLD\REAR\RTR\2100
60	8101144	1	SHLD\PTO\256-3PT
61	8101152	1	SHRDR\ASSY\2100
62	8101159	5	SLUGBAR\2100
63	8101176	1	BRKT\SPRING\BALEGUIDE
64	4800027	1	CLAMP\CBL\1/4
65	4800027	1	CLAMP\CBL\1/4
66	8101142	1	PIN\LATCH\RACKSTRAP
67	7500223	30	BUSH\FLAIL\1-1/4X5/8IDX2L

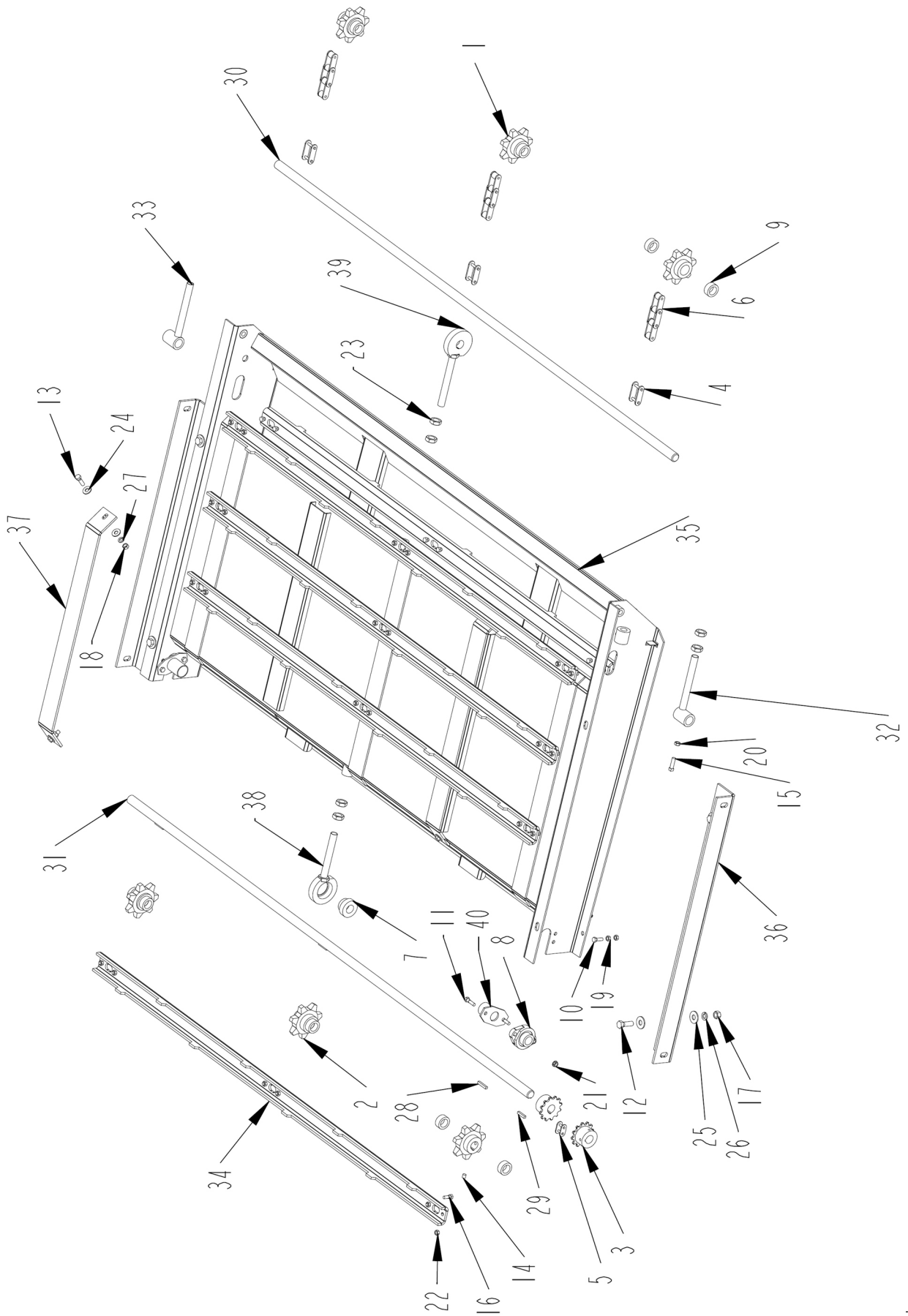
BALE CONVEYOR ASSEMBLY THRU S.N. 21-HJ-89000



BALE CONVEYOR ASSEMBLY THRU S.N. 21-HJ-89000

ITEM	PART NO.	QTY.	DESCRIPTION
1	1000088	3	SPKT\662\71\IDLER\CA
2	1000089	3	SPKT\662\71\1\4KW\DR
3	1100103	3	CHAIN\620CA\CL
4	1100247	3	CHAIN\620CA\47\W\ATTCH
5	2000310	2	BRG\FLG\CAST\1-1/4\2BOLT
6	2000809	12	CLLOR\SHFT\1\SET
7	4800013	2	BOLT\HEX\5\16X1
8	4800071	4	BOLT\HEX\5\16X1-1/4
9	4800082	4	BOLT\HEX\1\2X1-1/2
10	4800098	4	BOLT\HEX\3\8X1-1/4\NC
11	4800143	6	SCR\SET\ALN\3\8X3\8\NC
12	4800238	1	SCR\SET\SQ\3\8X1-1/4\NC
13	4800393	48	BOLT\HEX\5\16X7\8\GR8
14	4900001	4	NUT\HEX\1\2\NC
15	4900002	4	NUT\HEX\3\8\NC
16	4900003	4	NUT\HEX\5\16\NC
17	4900026	1	NUT\JAM\3\8\NC
18	4900027	4	NUT\FLG\TPLCK\5\16\NC
19	4900099	48	NUT\TPLCK\5\16\GR8\NC
20	4900104	8	NUT\JAM\3\4\NC
21	5000001	8	WASH\FLAT\3\8
22	5000004	8	WASH\FLAT\1\2
23	5000006	4	WASH\LOCK\1\2
24	5000019	4	WASH\LOCK\3\8
25	6200005	3	KEY\SQ\1\4X1-1/2
26	8100449	2	GUARD\TWINE\CNVYR
27	8100585	2	BRKT\SHFT\DRIVE\CNVYR
28	8100779	1	SHFT\IDLER\CNVYR
29	8100780	1	SHFT\DRIVE\76\CNVYR
30	8100783	1	BRKT\SHAFT\IDLER\CNVYR
31	8101022	1	BRKT\SHAFT\IDLER\NO-TAP
32	8101053	8	PLT\SLAT\2640
33	8101120	1	FRM\CNVYR\44X74-3\8
34	8101121	2	MNT\CNVYR\3\BRK
35	8101122	2	PL\RUB\CHAIN\CNVYR

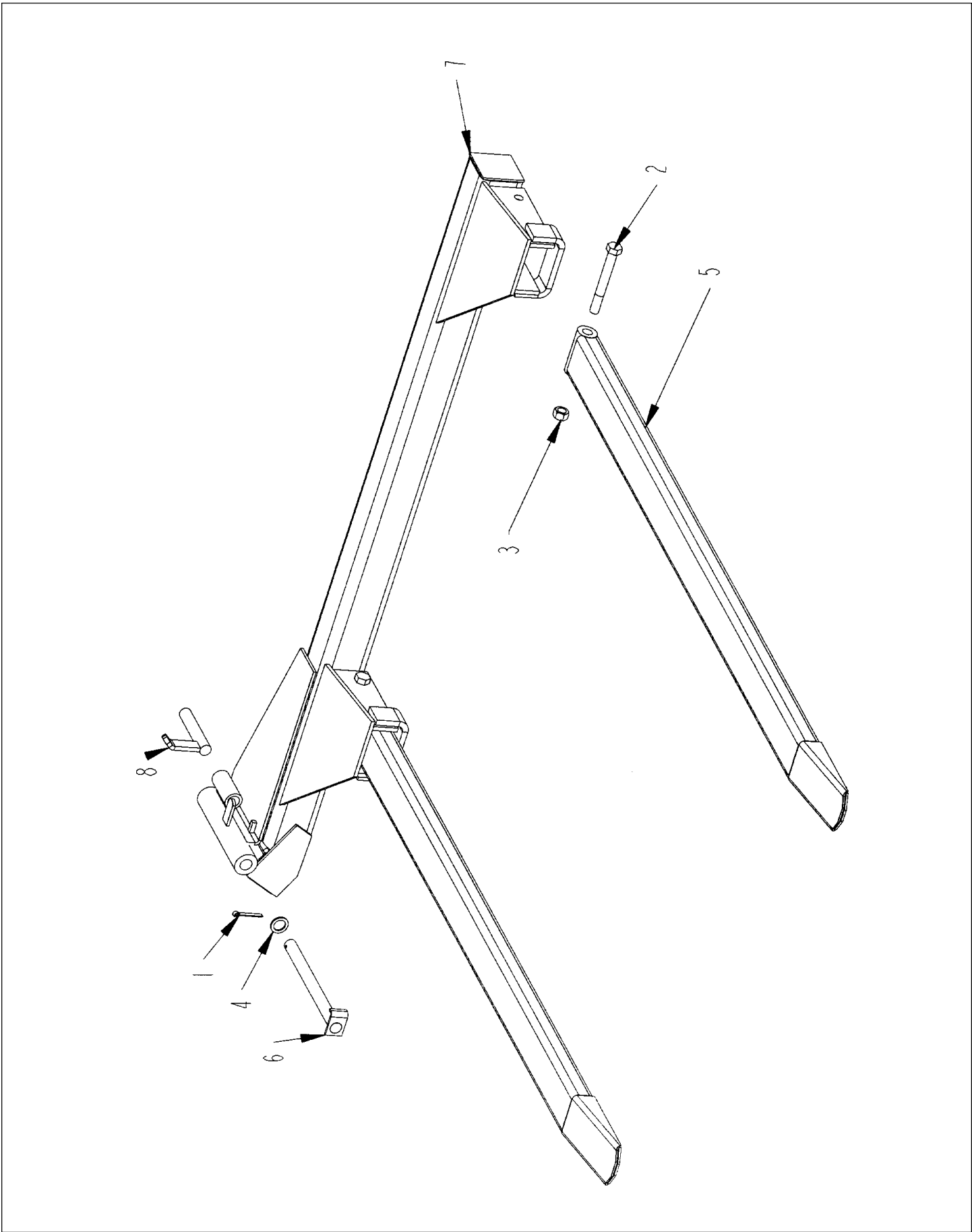
BALE CONVEYOR ASSEMBLY S.N. 21-IJ-89100 AND UP



BALE CONVEYOR ASSEMBLY S.N. 21-IJ-89100 AND UP

ITEM	PART NO.	QTY.	DESCRIPTION
1	1000088	3	SPKT\662\7\1\IDLER\CA
2	1000089	3	SPKT\662\7\1\1\4KW\DR
3	1000233	2	SPKT\CPLNG\60\12\1\HT\2SS\032-1600
4	1100103	3	CHAIN\620CA\CL
5	1100240	1	CHAIN\60\12\CPLNG\W-CL
6	1100247	3	CHAIN\620CA\47\W\ATTCH
7	2000047	1	BRG\W\CLLR\1\FHR\205-16
8	2000310	2	BRG\FLG\CAST\1\2BOLT
9	2000809	12	CLLOR\SHFT\1\SET
10	4800013	2	BOLT\HEX\5\16X1
11	4800071	4	BOLT\HEX\5\16X1-1/4
12	4800082	4	BOLT\HEX\1\2X1-1/2
13	4800098	4	BOLT\HEX\3\8X1-1/4\NC
14	4800143	6	SCR\SET\ALN\3\8X3\8\NC
15	4800238	1	SCR\SET\SQ\3\8X1-1/4\NC
16	4800393	48	BOLT\HEX\5\16X7\8\GR8
17	4900001	4	NUT\HEX\1\2\NC
18	4900002	4	NUT\HEX\3\8\NC
19	4900003	4	NUT\HEX\5\16\NC
20	4900026	1	NUT\JAM\3\8\NC
21	4900027	4	NUT\FLG\TPLCK\5\16\NC
22	4900099	48	NUT\TPLCK\5\16\GR8\NC
23	4900104	10	NUT\JAM\3\4\NC
24	5000001	8	WASH\FLAT\3\8
25	5000004	8	WASH\FLAT\1\2
26	5000006	4	WASH\LOCK\1\2
27	5000019	4	WASH\LOCK\3\8
28	6200005	3	KEY\SQ\1\4X1-1/2
29	6200014	1	KEY\SQ\1\4X1-1/4
30	8100779	1	SHFT\IDLER\CNVYR
31	8100780	1	SHFT\DRIVE\76\CNVYR
32	8100783	1	BRKT\SHAFT\IDLER\CNVYR
33	8101022	1	BRKT\SHAFT\IDLER\NO-TAP
34	8101053	8	PLT\SLAT\2640
35	8101120	1	FRM\CNVYR\44X74-3/8
36	8101121	2	MNT\CNVYR\3\BRK
37	8101122	2	PL\RUB\CHAIN\CNVYR
38	8101696	1	MNT\BRG\CNVYR
39	8101699	1	MNT\SHFT\CNVYR
40	8101749	2	GUARD\TWINE\CNVYR
	8101149	1	CNVYR\ASSY\3CH\2100

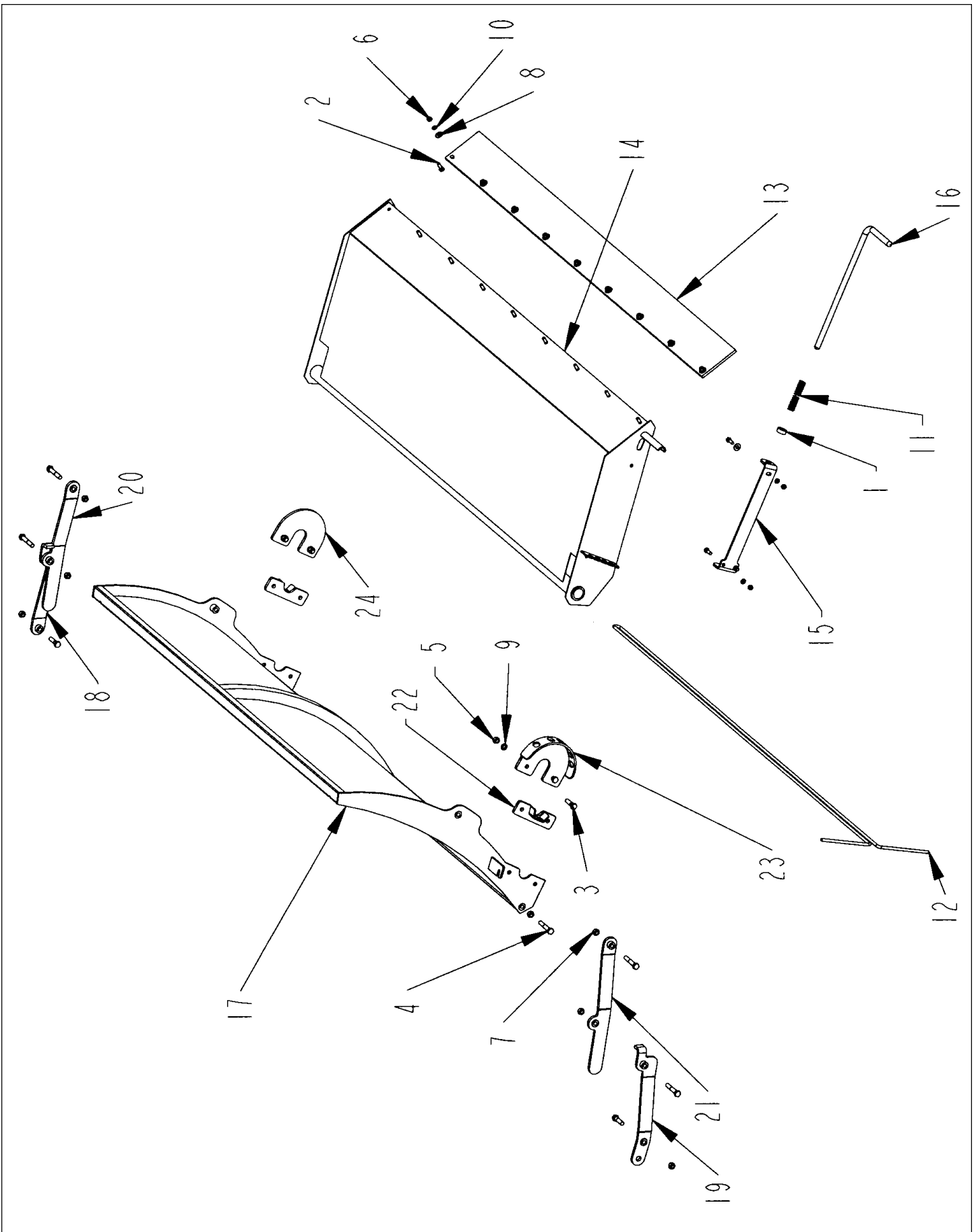
BALE LOADER ASSEMBLY



BALE LOADER ASSEMBLY

ITEM	PART NO.	QTY.	DESCRIPTION
1	4800103	1	PIN\COT\1/4X2
2	4800248	2	BOLT\HEX\3/4X6
3	4900139	2	NUT\TPLCK\3/4\GR8\NC
4	5000018	1	WASH\BUSH\1"\10GA
5	8100043	2	TINE
6	8100044	1	PIN\HINGE\FRAME\TINE
7	8101126	1	FRM\MNT\TINE
8	8101127	1	LATCH\PIN\LOCK\TINE
	8101154	1	LDR\ASSY\2100

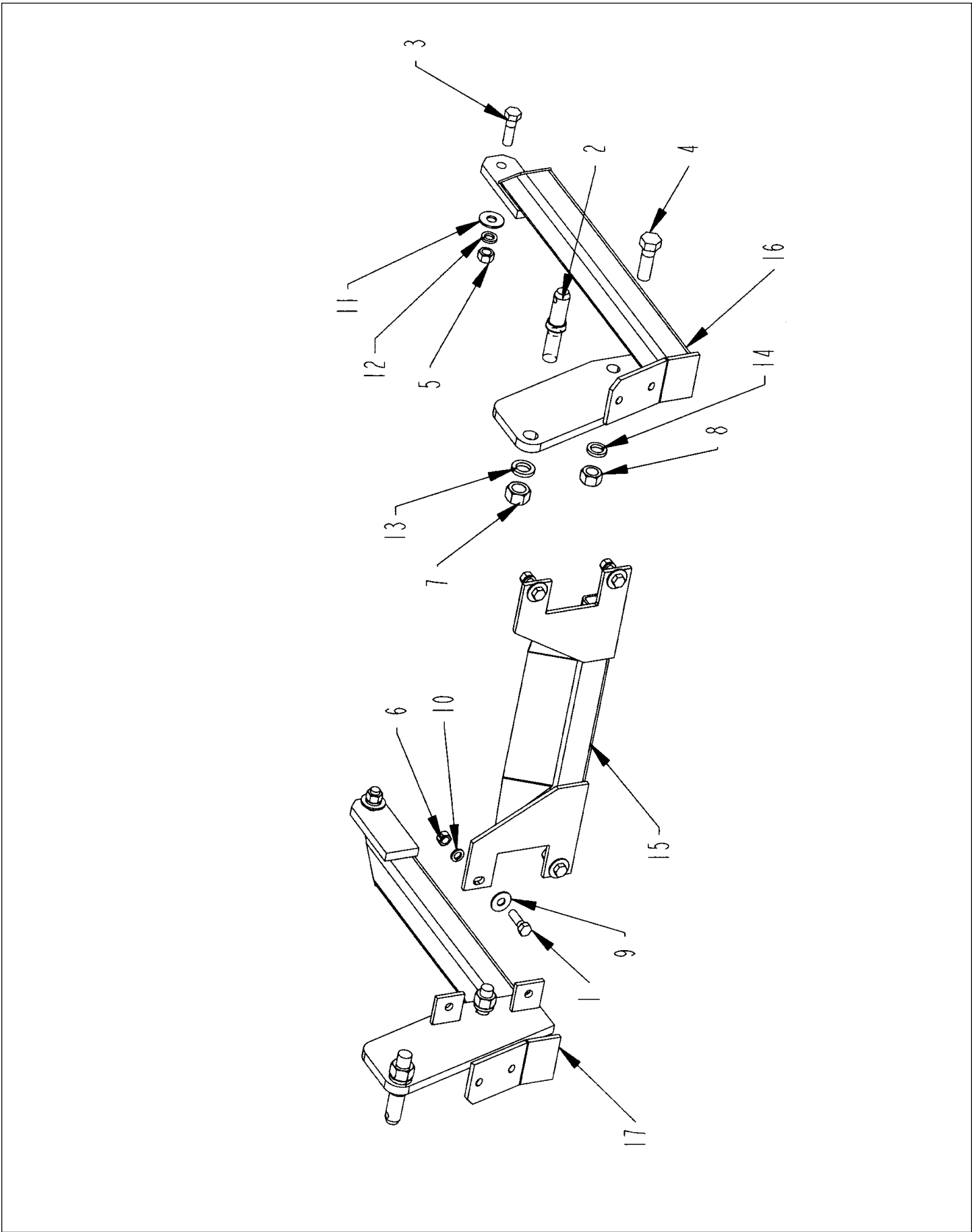
RACK DEFLECTOR ASSEMBLY



RACK DEFLECTOR ASSEMBLY

ITEM	PART NO.	QTY.	DESCRIPTION
1	2000811	1	CLLR\LOCK\3/4
2	4800003	12	BOLT\HEX\3/8X1
3	4800178	6	BOLT\HEX\1/2X1-3/4
4	4800351	6	BOLT\HEX\1/2X2-3/4
5	4900001	4	NUT\HEX\1/2\NC
6	4900002	12	NUT\HEX\3/8\NC
7	4900014	8	NUT\PLCK\1/2\NC
8	5000001	10	WASH\FLAT\3/8
9	5000006	4	WASH\LOCK\1/2
10	5000019	12	WASH\LOCK\3/8
11	6100031	2	SPRING\COMP\072W\25/32OD
12	6100075	1	BRKT\TORSION\DFLCRT
13	8100791	1	BELT\DFLCTR\6 x 73-3/4
13	8100819	opt	BELT\DFLCTR\18 x 73-3/4
14	8101046	1	DFLCTR\REAR LATCH\2002
15	8101087	1	BRKT\LATCH\DFLCTR
16	8101088	1	LATCH\DFLCTR
17	8101322	1	RACK\2100
18	8101134	1	BRKT\STRAP\RACK\W-STOP\REAR\14-1/2"
19	8101135	1	BRKT\STRAP\RACK\W-STOP\FRONT
20	8101139	1	BRKT\STRAP\RACK\REAR\20"
21	8101140	1	BRKT\STRAP\RACK\FRONT\20"
22	8101145	2	MNT\DFLCTR
23	8101146	1	MNT\DFLCTR\W-INDEX
24	8101147	1	MNT\HINGE\DFLCTR
	8101150	1	RACK\DFLCTR\ASSY

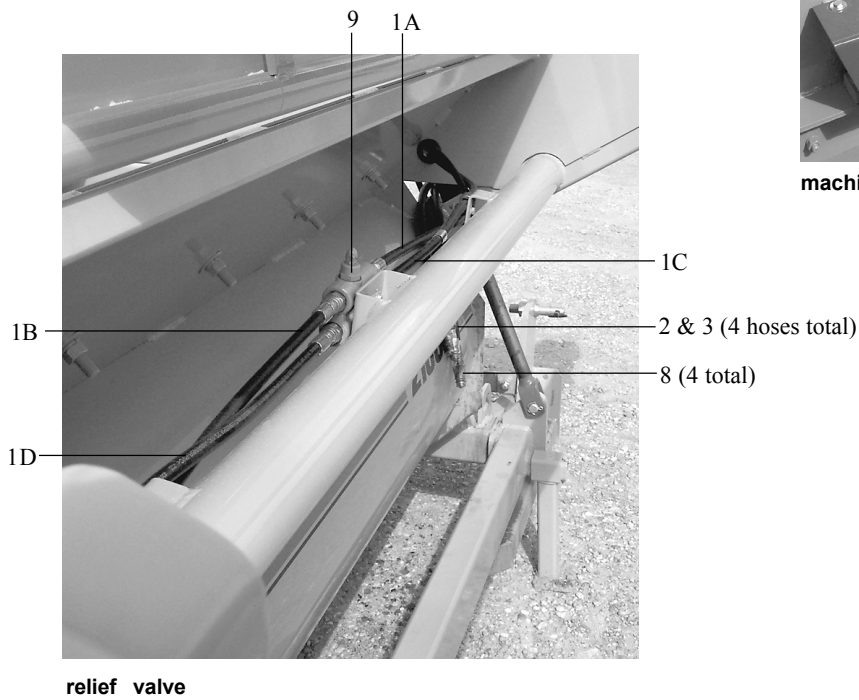
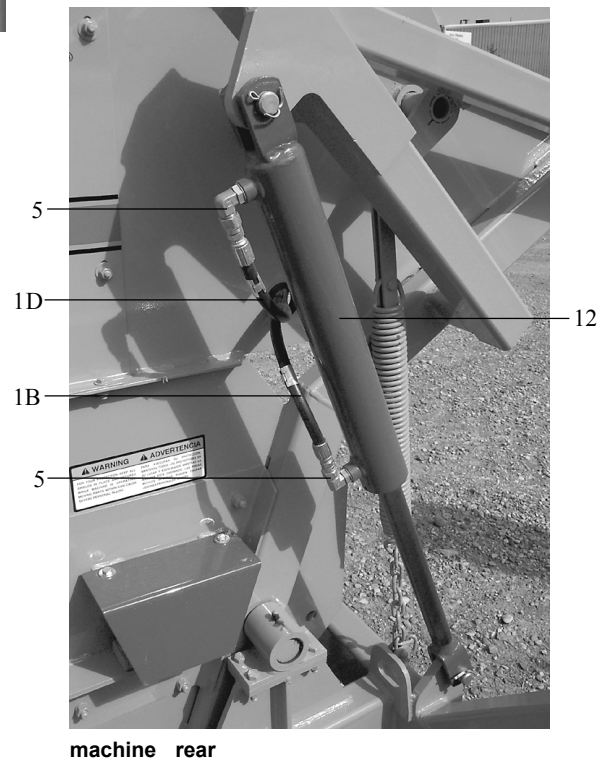
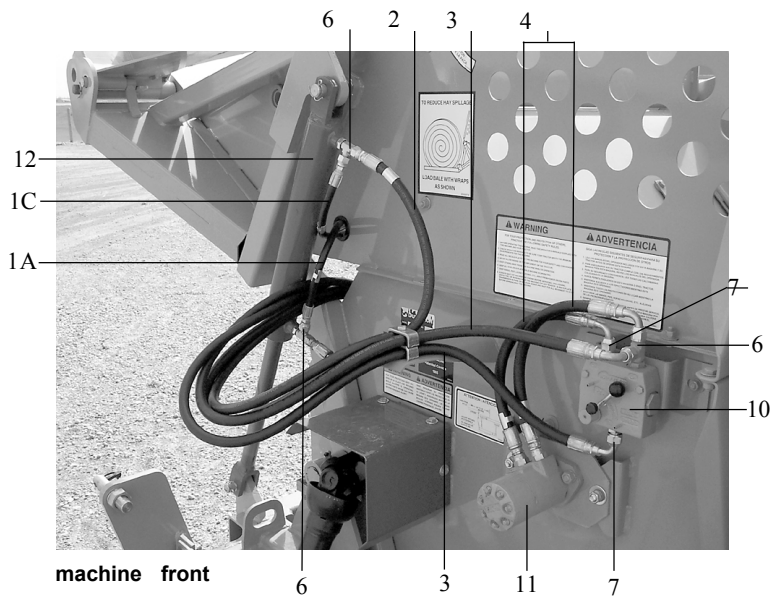
SHIPPING KIT HARDWARE



SHIPPING KIT HARDWARE

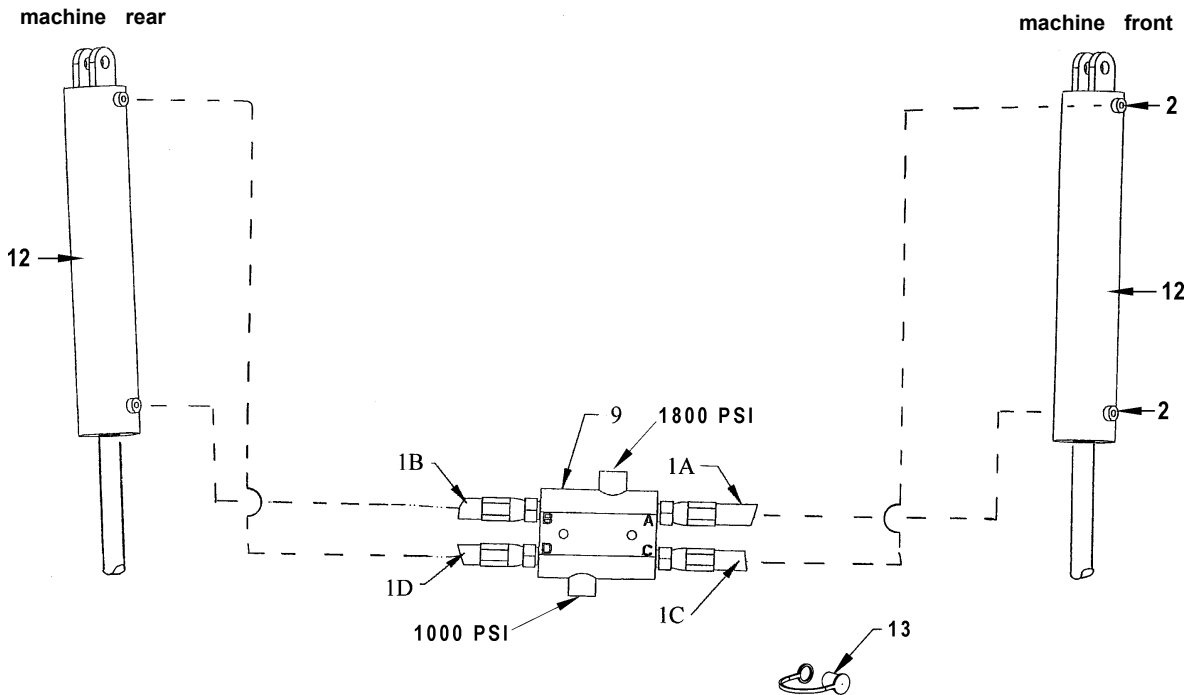
ITEM	PART NO.	QTY.	DESCRIPTION
1	4800010	4	BOLT\HEX\5/8X2
2	4800086	2	PIN\LINK\1-1/8
3	4800115	2	BOLT\HEX\3/4X2-1/2
4	4800140	2	BOLT\HEX\1X3\NC
5	4900004	2	NUT\HEX\3/4\NC
6	4900005	4	NUT\HEX\5/8\NC
7	4900024	2	NUT\HEX\1-1/8-12\NF
8	4900031	2	NUT\HEX\1\NC
9	5000002	4	WASH\FLAT\5/8
10	5000003	4	WASH\LOCK\5/8
11	5000005	2	WASH\FLAT\3/4
12	5000012	2	WASH\LOCK\3/4
13	5000025	2	WASH\LOCK\1-1/8
14	5000053	2	WASH\LOCK\1
15	8100137	1	BRACE\HITCH\QK\256\2100
16	8100654	1	HICTH\ADJ\LH\SN-HI4394+
17	8100655	1	HITCH\ADJ\RH\SN-HI4394+
	8100520	1	KIT\SHIP\HARDWARE\

HYDRAULIC ASSEMBLY

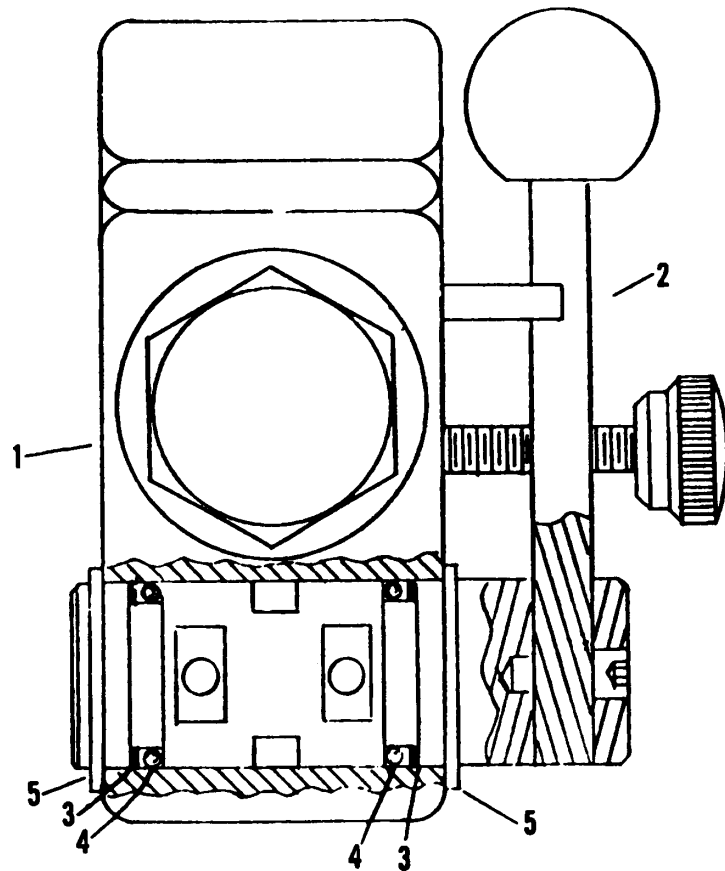


HYDRAULIC ASSEMBLY

	ITEM	PART NO.	QTY.	DESCRIPTION
cylinder circuit	1	3700619	4	Hose 3/8 x 54" -3/4 FJIC - 3/4 MOR5
	2	3700620	2	Hose 1/2 x72" - 3/4 FJIC - 3/4 MOR (To Tractor)
motor circuit	3	3700621	2	Hose 1/2 x 72" - 3/4 FJIC 90 - 3/4 MOR (To Tractor)
	4	3700622	2	Hose 1/2 x 20" - 3/4 FJIC 90 - 7/8 MOR5
	5	3800537	2	3/4" MOR x 3/4" MJIC 90 Elbow
	6	3800483	3	3/4" MOR x 3/4" MJIC x 3/4 MJIC Run Tee
	7	3800477	2	3/4" MOR x 3/4" MJIC
	8	3800694	4	3/4" FOR - Quick CPLR
	9	4000234	1	RLF - VALVE
		4000417	1	VALVE\HYD\RELF\1000 PSI
		4000418	1	VALVE\HYD\RELF\1800 PSI
	10	4000213	1	FLW - CTRL - VALVE
	11	3900025	1	HYD - MTR
	12	4100224	2	HYD - CYL 2-1/2 x 16"- 1-1/2" Rod- CANADIAN TOOL & DIE
		4100235		SEAL-KIT For 4100224
	12A	4100325	2	HYD - CYL 2-1/2 x 16"- 1-1/2" Rod - RAM INDUSTRIES
		4100327		SEAL-KIT FOR 4100325
13	7500361	2	CAP\YELLOW\DUST\HOSE\HYD	
13A	7500362	2	CAP\RED\DUST\HOSE\HYD	



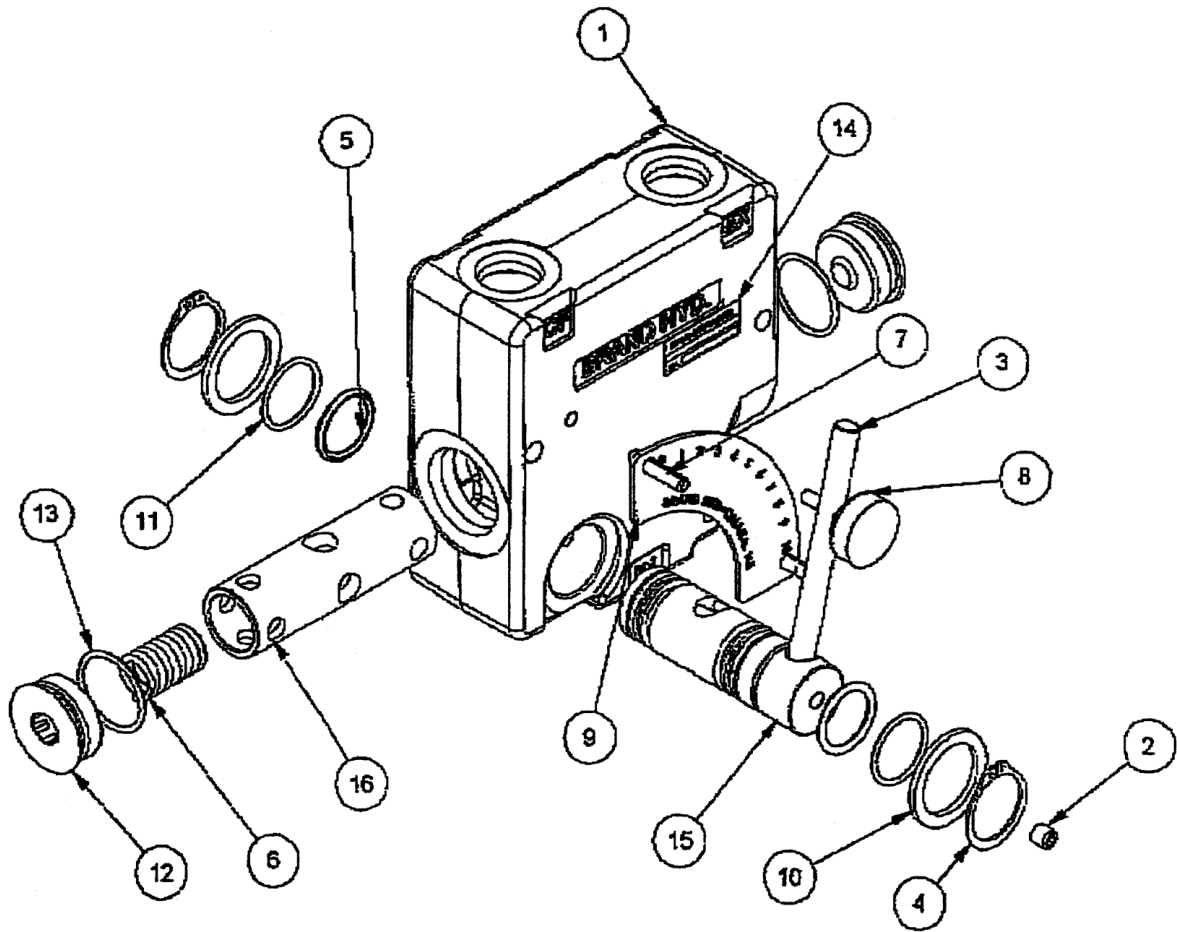
FLOW CONTROL VALVE (4000213)



FLOW CONTROL VALVE (4000213)

ITEM	PART NO.	QTY.	DESCRIPTION
1	4000213	1	Flow Control Valve, o-ring thread
2	4000031	1	Handle Assembly
3 & 4	4000091	1	SealKit\FlowControl
5	4000034	2	Snap Ring

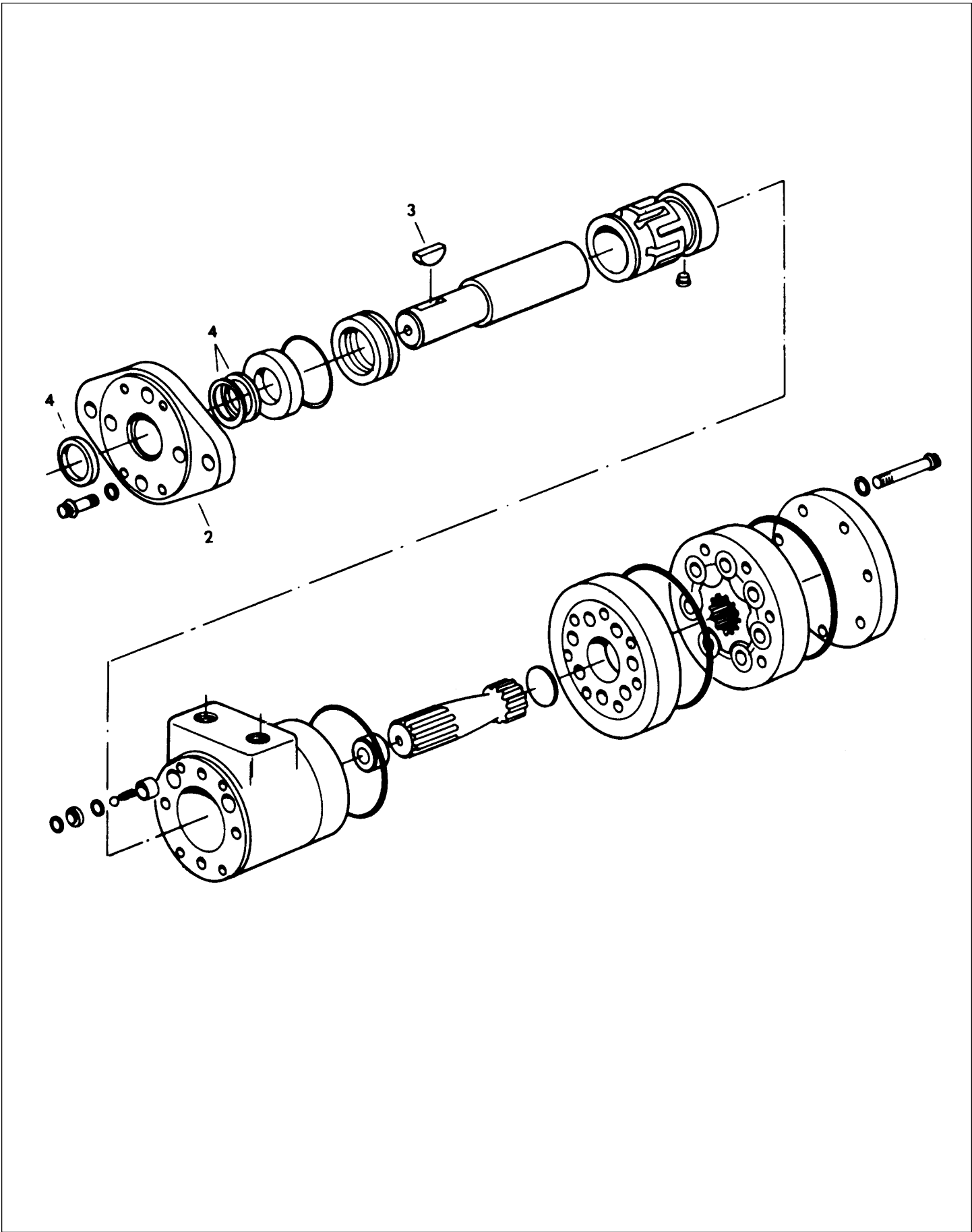
FLOW CONTROL VALVE (4000331)



FLOW CONTROL VALVE (4000331)

ITEM	PART NO.	DESCRIPTION
	4000331	VALVE\FLW-CRTL\#8FOR
3 & 8	4000334	HDL\ASSY\W\HYD
5,10,11, & 13	4000335	SEAL\KIT\W\HYD (INCLUDES 2 EACH OF 5,10,11, & 13)
4	4000336	SNAP RING\W\HYD

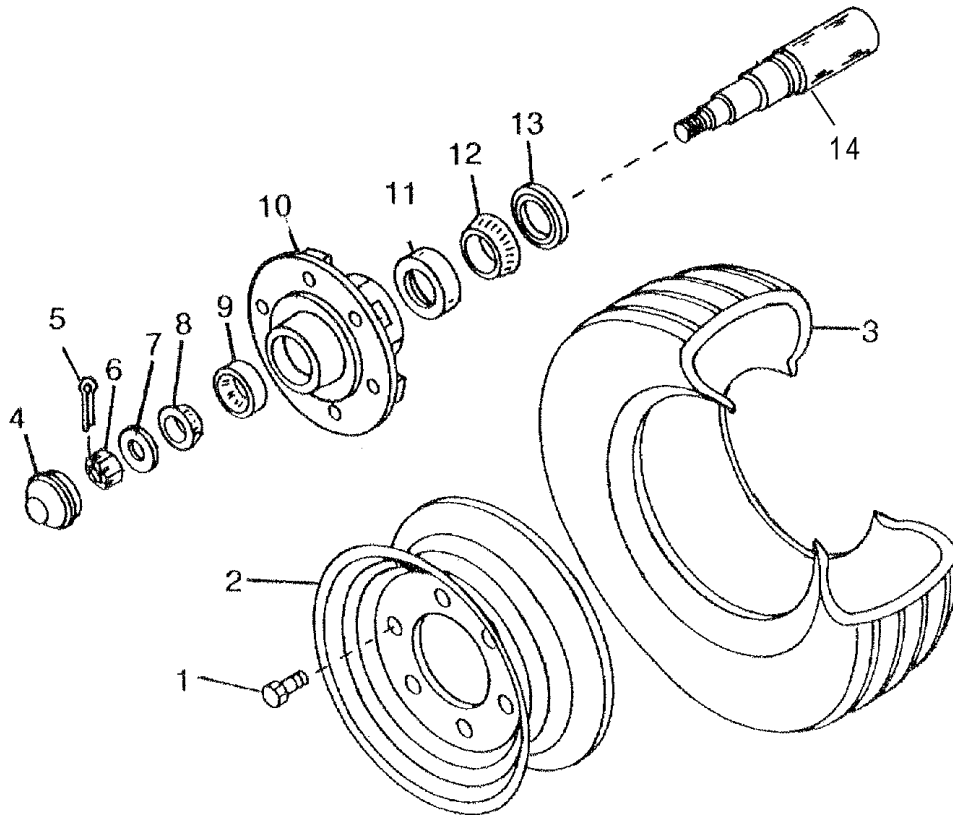
ORBIT MOTOR



ORBIT MOTOR

ITEM	PART NO.	QTY.	DESCRIPTION
1	3900025		MTR\HYD\17.9\0-RING
2	3900002	1	MTG FLG
3	6200011	1	KEY\WDF\1/4X1\#15\808
4	7501038	1	UNI SEAL KIT 007--009

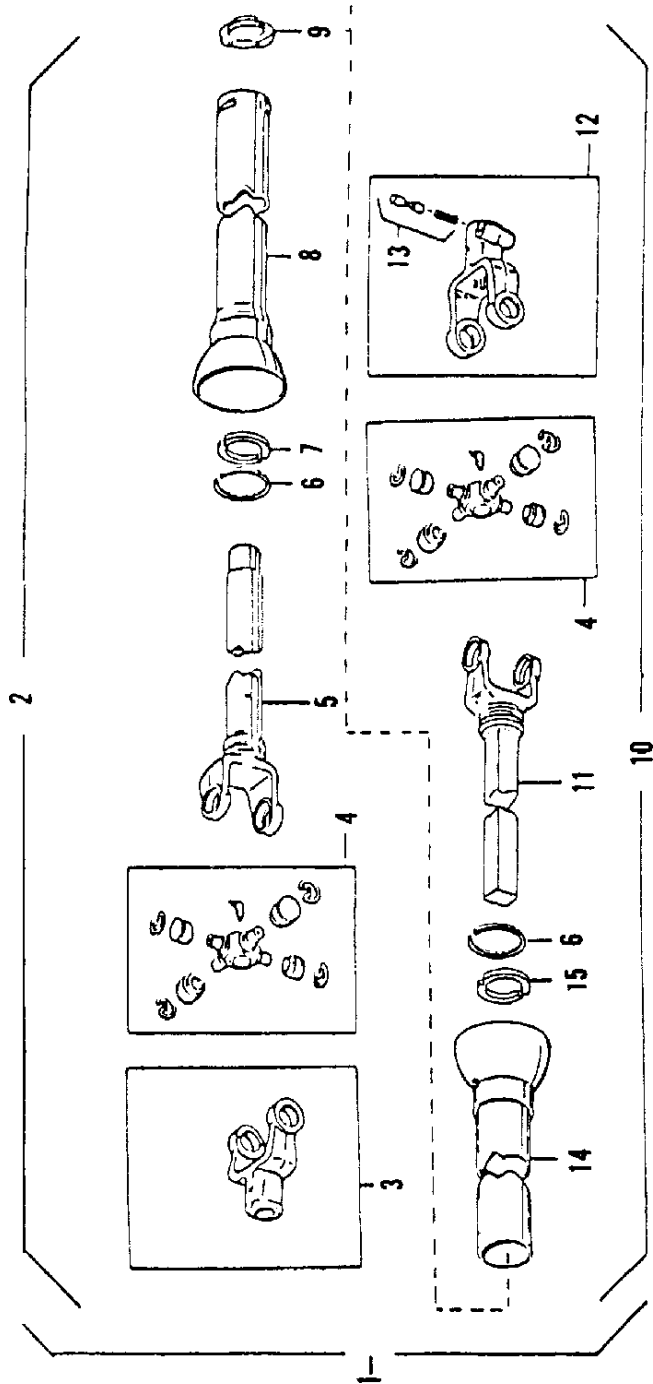
WHEEL AND BEARING



WHEEL AND BEARING

ITEM	PART NO.	QTY.	DESCRIPTION
1	2900012	6	Wheel Bolts, Per Hub
2	2600601	2	Wheel, 6-Bolt - 14 x 8
3	2600013	2	Tire, 9.5L x 14 - 8 ply
2&3	2600825	2	Wh\Imp\9.5 x 14\Tire & Rim
4	2900013	1	Cap
5	4800157	1	Pin\Cot\3/16 x 2
6	4900054	1	Nut, Spindle
7	5000055	1	Washer, 7/8 Flat
8	2900018	1	Cone, Outer
9	2900004	1	Cup, Outer
10	N.A.	1	Order 2900069
11	2900006	1	Cup, Inner
12	2900007	1	Cone, Inner
13	2900008	1	Grease Seal
14			See "Main Frame Assembly"
	2900069	1	Hub Complete

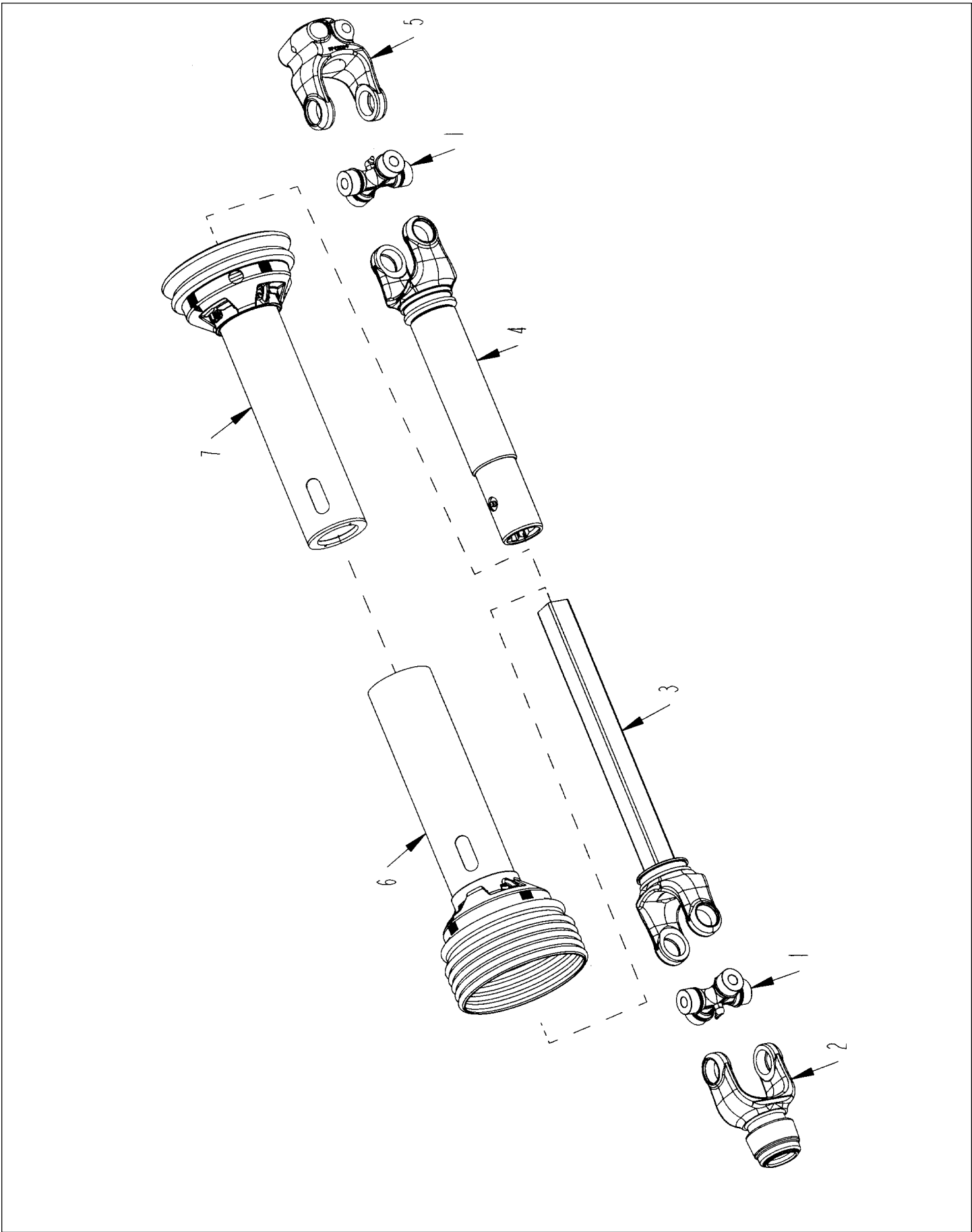
PTO ASSEMBLY #3600107 - STEEL GUARD



PTO ASSEMBLY #3600107 - STEEL GUARD

ITEM	PART NO.	QTY.	DESCRIPTION
1	3600107	N.A.	35RW Universal Joint and Telescoping Shaft assembly with Guard, Steel Guard
2	3600108	N.A.	Joint and Tube with Guard Machine 1/2 Complete, Steel Guard
3	3600079	1	Yoke, 1-3/4" Rd.
4	3600042	2	Repair Kit
5	3600109	1	Yoke and Tube
6	3600283	N.A.	Bearing Retainer
7	3600283	N.A.	Nylon Bearing
8	3600110	1	Male Guard Tube, Inner, Steel Guard
9	3600283	1	Nylon Centralizer
10	3600111	1	Joint and Shaft Half with Guard, Tractor Complete, Steel Guard
11	3600112	1	Yoke and Shaft
12	3600084	1	O.D. Yoke Assembly, 1000 RPM
13	3600056	1	Saf-T-Pin and Spring Kit
14	3600113	1	Female Guard Tube, Steel Guard
15	3600283	N.A.	Nylon Bearing
	3600283		NYLON REPAIR KIT includes 6, 7, 9, & 15

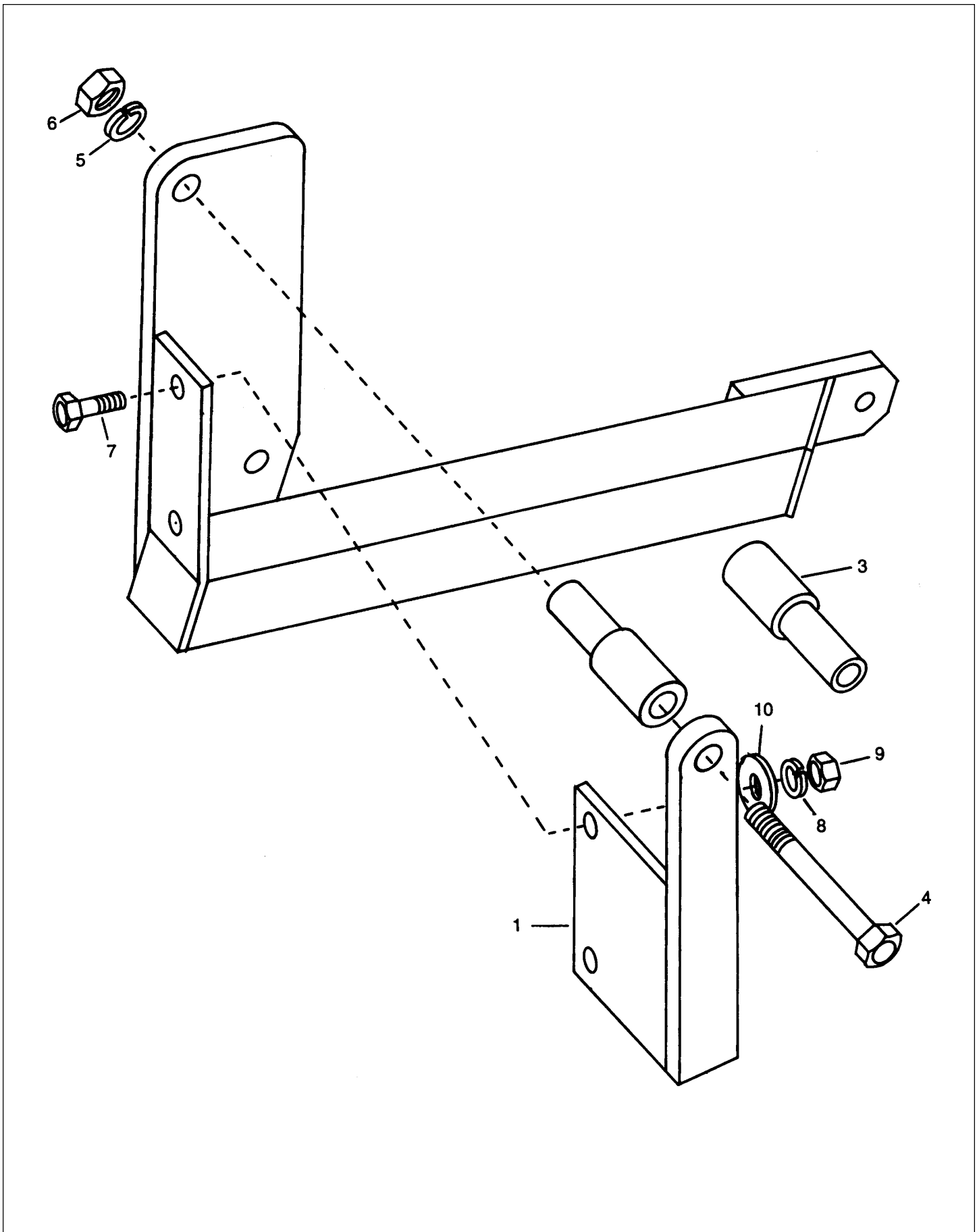
PTO ASSEMBLY #3600516 - PLASTIC GUARD



PTO ASSEMBLY #3600516 - PLASTIC GUARD

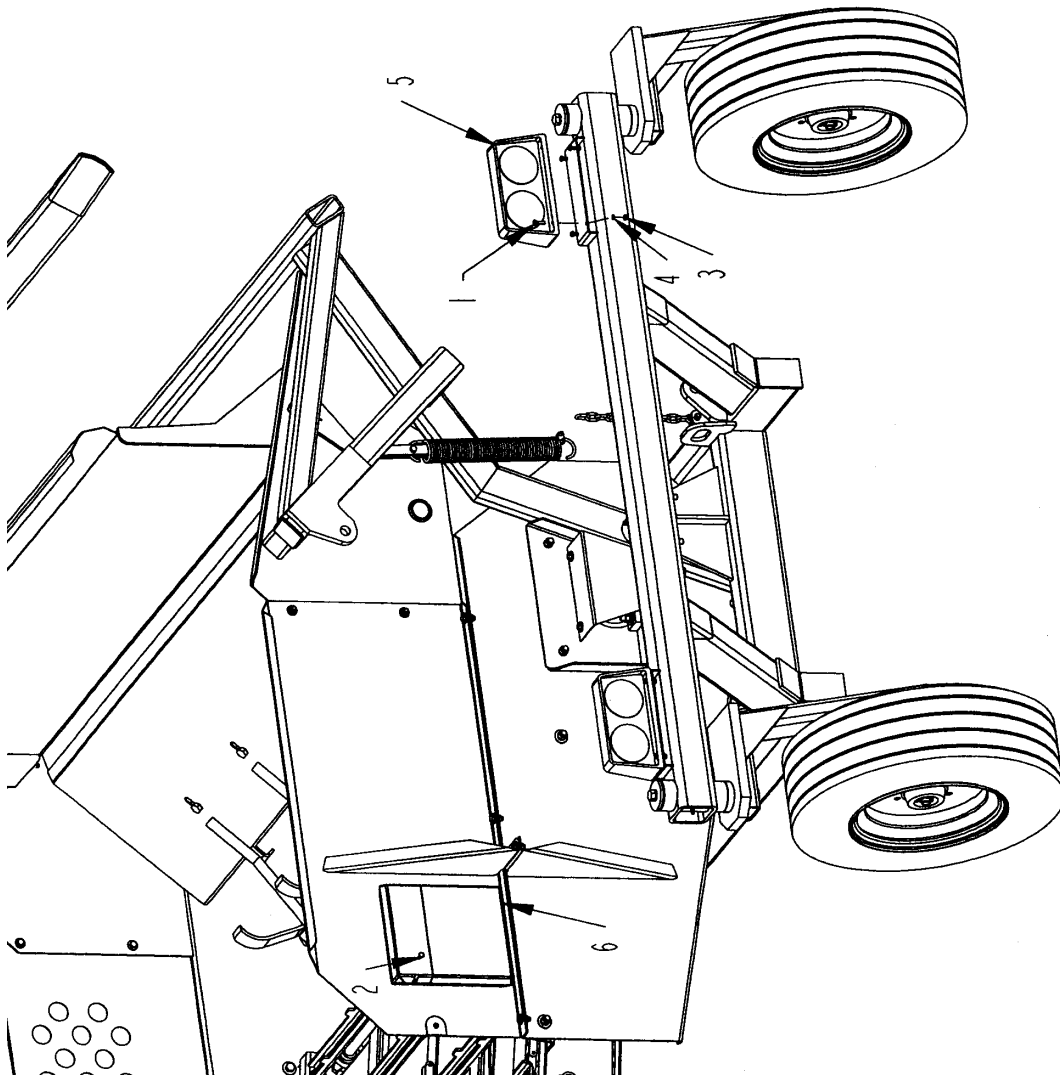
ITEM	PART NO.	QTY.	DESCRIPTION
	3600516		PTO\242-22554\35R\PLASTIC GUARD
1	3600042	2	CROSS & BEARING KIT 35
2	3600084	1	YOKE\35W\1-3/8 21 SPL\QD
3	3600112	1	35W YOKE & SHAFT
4	3600109	1	35W YOKE & TUBE
5	3600079	1	YOKE\35W\1-3/4 RD CLAMP
6 & 7	3600517	1	GUARD\SET\PTO\3600516\PLASTIC GUARD
	3600518		JOINT&SHAFT\ASM\W-PLASTIC GRD SET (INCLUDES: 1,2,3,6)
	3600519		JOINT&TUBE\ASM\W-PLASTIC GRD SET (INCLUDES: 1,4,5,7)

BALEBUSTER QUICK TATCH



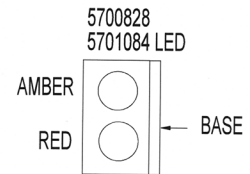
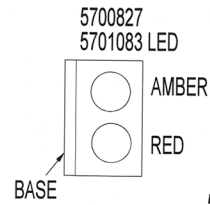
BALEBUSTER QUICK TATCH

ITEM	PART NO.	QTY.	DESCRIPTION
1	8100652	1	Quick Hitch Mount, Left (shown)
2	8100653	1	Quick Hitch Mount, Right
3	8100131	2	Reversible Adapter Bushing
4	4800189	2	1-1/8" x 9" Grade 5 Hex Bolt
5	5000025	2	1-1/8" Lock Washer
6	4900037	2	1-1/8" Hex Nut
7	4800010	4	5/8" x 2" Hex Bolt
8	5000003	4	5/8" Lock Washer
9	4900005	4	5/8" Hex Nut
10	5000002	4	5/8" Flat Washer

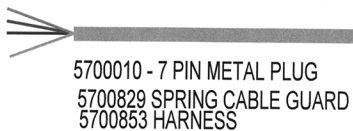


TAIL LIGHTS KITS
 5700852
 5701080 LED

"GROUND" WHITE
 "RIGHT TURN" GREEN
 "TAIL" BROWN



"GROUND" WHITE
 "GROUND" WHITE
 "LEFT TURN" YELLOW
 "RIGHT TURN" GREEN
 "TAIL" BROWN
 "TAIL" BROWN



"GROUND" WHITE
 "LEFT TURN" YELLOW
 "TAIL" BROWN

TAILLIGHTS AND OPERATOR'S MANUAL ENCLOSURE

ITEM	PART NO.	QTY.	DESCRIPTION
1	4800277	8	BOLT\HEX\1/4X1
2	4800503	4	BOLT\HEX\1/4X5/8\NC
3	4900009	16	NUT\HEX\1/4\NC
4	5000024	16	WASH\LOCK\1/4
5	5700852	1	KIT\LIGHT
5 LED	5701080	1	KIT\LIGHT\2-3PIN;LEDS
6	7500590	1	ENCL\OPS\8-1/2X11X1-5/8



2100

#1. 6500020

#2. 6500337

⚠ DANGER	FLYING HAY, ROCKS, AND OTHER OBJECTS THROWN BY MACHINE. STAY CLEAR OF DISCHARGE SIDE OF MACHINE UNLESS OPERATOR HAS STOPPED TRACTOR ENGINE AND MACHINE HAS STOPPED ROTATING. FALLERE TO FOLLOW THESE INSTRUCCIONES PUEDE RESULTAR EN SERIAS LESIONES PERSONALES O LA MUERTE.
⚠ PELIGRO	LA PAJA, LAS PIEDRAS Y OTRAS COSAS TIRADAS POR LA MAQUINA. NO SE PARE JUNTO AL LADO DE PARADOR DE LA MAQUINA SI EL MOTOR ESTA EN MARCHA Y LAS PALETAS ESTAN EN MOVIMIENTO. NO SIGUI ESTAS INSTRUCCIONES PUEDE RESULTAR EN SERIAS LESIONES O INCLUSO LA MUERTE.

⚠ DANGER PELIGRO	ROTATING FLAILS CAN KILL OR DISMEMBER KEEP CLEAR OF MACHINE UNTIL POWER TAKE-OFF HAS BEEN DISCONNECTED, TRACTOR ENGINE SHUT OFF AND FLAIL ROTATION STOPPED.	LAS PALETAS EN MOVIMIENTO PUEDEN DESMIEMBRAR E INCLUSO MATAR MANTENGA SU DISTANCIA HASTA QUE SE DESCONECTE LA TOMA DE FUERZA, EL MOTOR PARE Y LAS PALETAS DEJEN DE MOVERSE.
-----------------------------	---	---



#3. 6500034

#4. 6500035

#5. 6500036

ATTENTION

1000 R.P.M. P.T.O. 34 TO 38 INCHES
3 POINT

ADJUST HITCHES ACCORDINGLY

⚠ DANGER

**Rotating Driveline
Keep Away!**
Entanglement can cause serious injuries or death.
Do Not Operate Without -
* All driveline guards, tractor and equipment shields in place.
* Drivelines securely attached at both ends.
* Drivelines guards that turn freely on driveline.

⚠ WARNING	⚠ ADVERTENCIA
FOR YOUR PROTECTION KEEP ALL SHIELDS IN PLACE AND SECURED WHILE MACHINE IS OPERATING. MOVING PARTS WITHIN CAN CAUSE SEVERE PERSONAL INJURY.	PARA ASEGURAR SU PROTECCION, MANTENGA TODOS LOS PROTECTORES EN SU LUGAR Y ASEGURADOS MIENTRAS LA MAQUINA ESTE OPERANDO. LAS PIEZAS MOVILES INTERNAS PUEDEN CAUSAR LESIONES PERSONALES GRAVES.

#6. 6500037

#8. 6500040

#7. 6500085

TO REDUCE HAY SPILLAGE

LOAD BALE WITH WRAPS AS SHOWN

⚠ WARNING	⚠ ADVERTENCIA
FOR YOUR PROTECTION AND SAFETY OF OTHERS, FOLLOW THESE SAFETY RULES. 1. Read and understand operator's manual before operating machine. 2. Read and understand operator's manual before operating machine. 3. Read and understand operator's manual before operating machine. 4. Read and understand operator's manual before operating machine. 5. Read and understand operator's manual before operating machine. 6. Read and understand operator's manual before operating machine. 7. Read and understand operator's manual before operating machine. 8. Read and understand operator's manual before operating machine. 9. Read and understand operator's manual before operating machine. 10. Read and understand operator's manual before operating machine. 11. Read and understand operator's manual before operating machine. 12. Read and understand operator's manual before operating machine. 13. Read and understand operator's manual before operating machine. 14. Read and understand operator's manual before operating machine. 15. Read and understand operator's manual before operating machine.	PARA SU PROTECCION Y LA SEGURIDAD DE OTROS, OBSERVE ESTAS NORMAS DE SEGURIDAD. 1. Lea y entienda el manual de instrucciones antes de operar la maquina. 2. Lea y entienda el manual de instrucciones antes de operar la maquina. 3. Lea y entienda el manual de instrucciones antes de operar la maquina. 4. Lea y entienda el manual de instrucciones antes de operar la maquina. 5. Lea y entienda el manual de instrucciones antes de operar la maquina. 6. Lea y entienda el manual de instrucciones antes de operar la maquina. 7. Lea y entienda el manual de instrucciones antes de operar la maquina. 8. Lea y entienda el manual de instrucciones antes de operar la maquina. 9. Lea y entienda el manual de instrucciones antes de operar la maquina. 10. Lea y entienda el manual de instrucciones antes de operar la maquina. 11. Lea y entienda el manual de instrucciones antes de operar la maquina. 12. Lea y entienda el manual de instrucciones antes de operar la maquina. 13. Lea y entienda el manual de instrucciones antes de operar la maquina. 14. Lea y entienda el manual de instrucciones antes de operar la maquina. 15. Lea y entienda el manual de instrucciones antes de operar la maquina.

⚠ WARNING		⚠ ADVERTENCIA
No Riders Serious personal injury could result from riding on the machine.		Pasajeros Prohibidos Podrian resultar lesiones personales graves al viajar en la maquina.

#9. 6500041

#10. 6500043

#11. 6500074

	⚠ WARNING
	Risk of head and eye injuries. Risk of hearing damage. Head, eye, and hearing protection required.

#12. 6500549

2100 BALEBUSTER DECAL REQUIREMENTS

ITEM	PART NO.	QTY.	DESCRIPTION
	6500018		DECALKIT
1	6500020	2	HAYBUSTER
2	6500337	2	2100
3	6500034	3	DANGER, FLYING HAY
4	6500035	2	DANGER, ROTATING FLAILS
5	6500036	1	BALE ROTATION
6	6500037	1	ATTENTION, ADJUST HITCHES
7	6500085	1	DANGER ROTATING DRIVE LINE
8	6500040	2	WARNING, KEEP ALL SHIELDS IN PLACE
9	6500041	1	WARNING, FOR YOUR PROTECTION
10	6500043	2	WARNING, NO RIDERS
11	6500074	1	TO REDUCE HAY SPILLAGE
12	6500549	1	DECAL\WARN\PPE
	6500366	1	DECAL\SMV
	6500376	1.5 FT	DECAL\MISC\TAPE\RED
	6500377	1.5 FT	DECAL\MISC\TAPE\AMBER
	7500077	12 OZ	YELLOW SPRAY PAINT
	7500092	QUART	YELLOW PAINT
	7500091	GALLON	YELLOW PAINT
	7500078	12 OZ	RED SPRAY PAINT
	7500105	QUART	RED PAINT
	7500104	GALLON	RED PAINT

2100 BALEBUSTER DECAL LOCATIONS

