

# **HAYBUSTER**

## **TH-900 PARTS BOOK**



PRICE \$2.25

HAYBUSTER MANUFACTURING, BOX 1950, JAMESTOWN, NORTH DAKOTA 58401

1987

# WARRANTY

For one year from delivery date, Haybuster Mfg., Inc. will replace or repair for the original purchaser, free of charge, any part or parts, found upon examination at our factory in Jamestown, North Dakota, to be defective in material or workmanship under normal use and maintenance.

This warranty does not apply to tires or bearings or any other trade accessories not manufactured by Haybuster. Buyer must rely solely on the existing warranty, if any, of those respective manufacturers.

This warranty shall become void if the machine has been subject to misuse, negligence, alterations, accident or lack of required maintenance.

Warranty Registration form must be filled out and signed to validate warranty.

Replacement Parts are available only through your Haybuster dealer.

To obtain the fastest service, always remember to:

1. Order by part number.
2. Give the machine year and model.
3. Include the serial number.

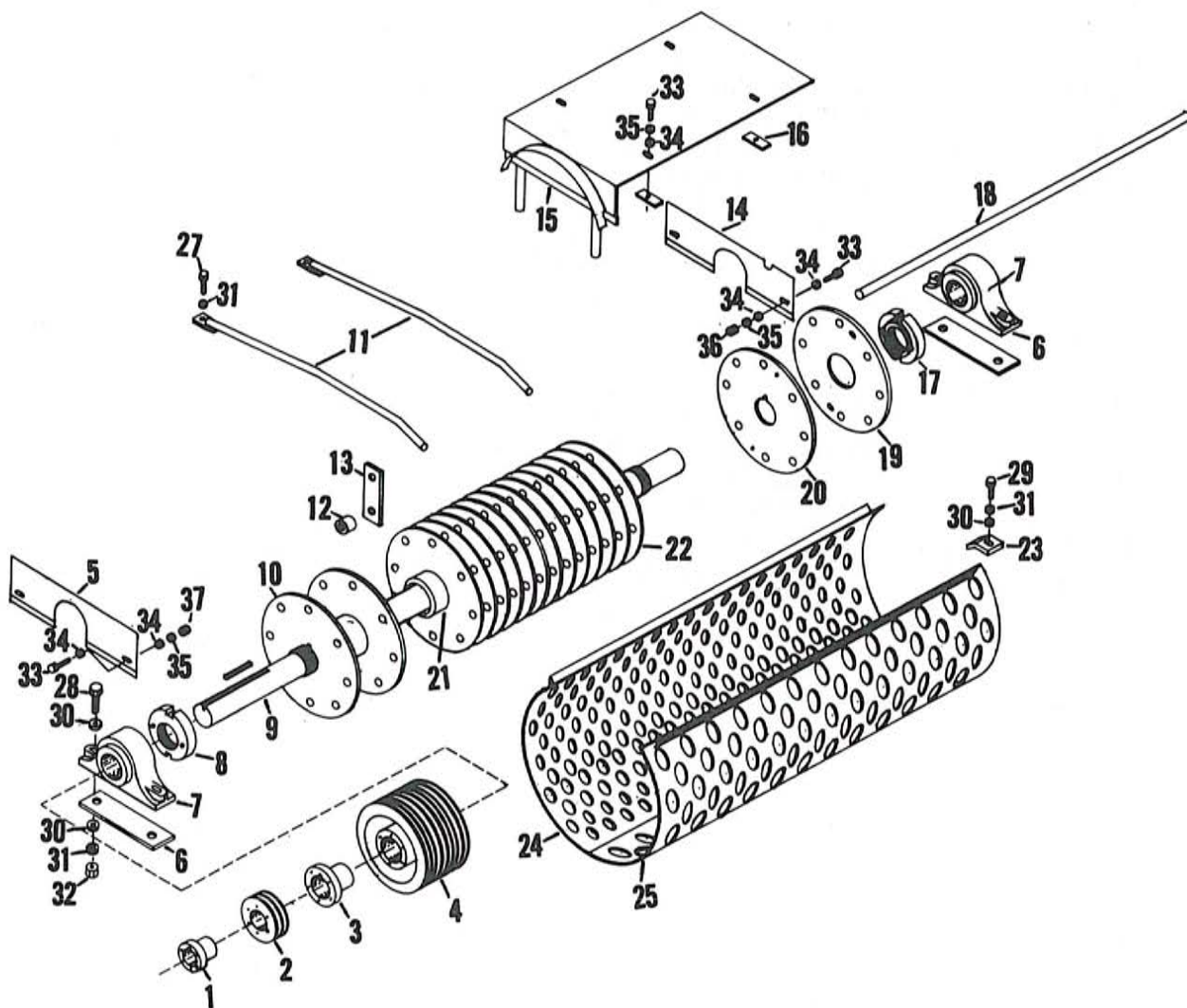
## SAFETY FIRST Prevent Injury or Possible Death

This machine can be extremely hazardous if operator or bystanders do not heed **WARNING** signs. **NEVER** grease, make adjustments, or attempt to remove forage while machine is in operation.

**SHIELDS ARE FOR YOUR PROTECTION  
DO NOT REMOVE**

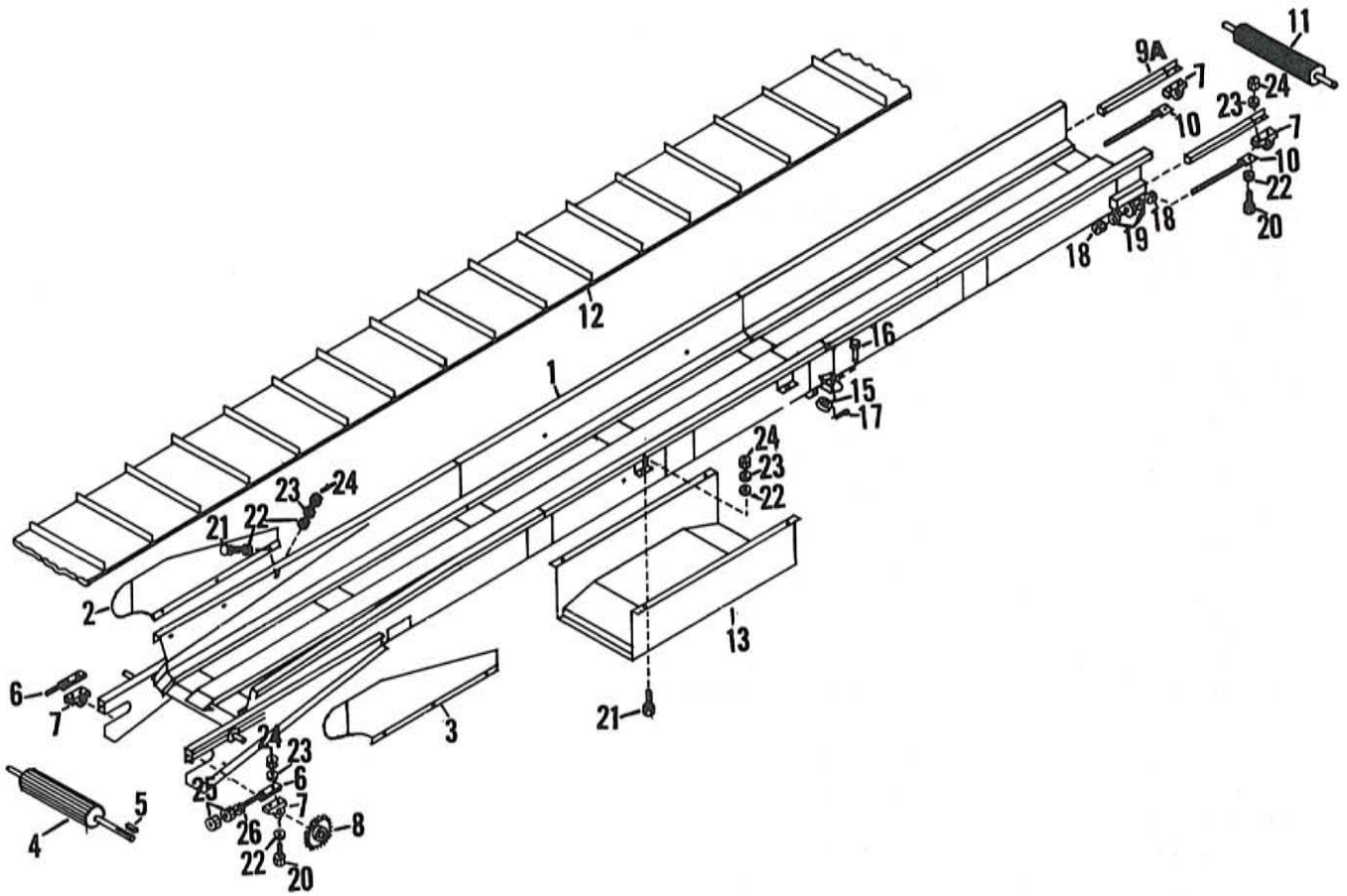
Ref.	Part No.	Qty.	Description
48	4500003	1	Auger, Right Hand Flighting
49	4500173	1	Auger, Left Hand Flighting
50			
51	4900005	2	5/8" Hex Nut
52	5000002	2	5/8" Flat Washer
53	4800144	4	5/8" x 6-1/2" Hex Head Bolt
54	4800010	1	5/8" x 2" Hex Head Bolt
55	5000002	12	5/8" Flat Washer
56	5000003	5	5/8" Lock Washer
57	4900005	5	5/8" Hex Nut
58	4800135	1	1/2" x 3-1/2" Hex Head Bolt
59	4800082	10	1/2" x 1-1/2" Hex Head Bolt
60	5000004	22	1/2" Flat Washer
61	5000006	11	1/2" Lock Washer
62	4900001	11	1/2" Hex Nut
63	4800034	12	3/8" x 1-1/2" Hex Head Bolt
64	4800003	4	3/8" x 1" Hex Head Bolt
65	5000001	34	3/8" Flat Washer
66	5000019	17	3/8" Lock Washer
67	4900002	14	3/8" Hex Nut
68	4800029	1	3/8" x 2-1/2" Hex Head Bolt
69	1400004	1	Pulley, 11" 6B 1000 R.P.M.
70	1500006	1	Hub, Q2 - 2-3/16" 1000 R.P.M.
71	1600007	6	Belts, B-83 1000 R.P.M.
72	1300003	2	Pulleys, 12" x 1" 1000 R.P.M.
73	1600023	2	Belts, B-71 1000 R.P.M.

# 6 Cylinder



Ref.	Part No.	Qty.	Description
1	1500005	1	Hub, Q1 2-3/16"
2	1400006	1	Pulley 2B 56Q 6"
3	1500006	1	Hub, Q2 2-3/16"
4	1400016	1	Pulley, 6B 11"
5	4500185	1	Front Cylinder Bearing Plate
6	4500188	4	Bearing Shim, 7GA
7	1800006	2	2-3/16" P.B. Bearing
8	4500022	1	Cylinder Nut
9	2400004	1	Cylinder Shaft
10	4500004	1	Cylinder End Plate
11	4500025	2	Slug Bar
12	4500017	12	Hammer Rod Spacer
13	5200001	60	Hammers
14	4500182	1	Rear Cylinder Bearing Plate
15	4500189	1	Cylinder Bearing Cover
16	4500094	4	Clips
17	4500026	1	Cylinder Nut with Shoulder
18	5300001	8	Hammer Rod, 40"
19	4500019	1	Moveable Plate
20	4500023	1	Cylinder End Plate
21	6900114	15	Cylinder Spacer
22	4500020	14	3/16" Cylinder Plates
23	4500109	2	Screen Hold Down Clips
24	5400007	1	Screen 2" Dia. Holes
25	5400008	1	Screen 3" Dia. Holes - Also available 3/4" and 1"
	4500034		Complete Cylinder (Less bearings, hammers & rods)
26	6200013	1	5/8" x 4-1/2" Key
27	4800106	2	5/8" x 1-1/2" Hex Head Bolt
28	4800100	4	5/8" x 4" Hex Head Bolt
29	4800054	2	5/8" x 3-1/2" Hex Head Bolt
30	5000002	10	5/8" Flat Washer
31	5000003	8	5/8" Lock Washer
32	4900005	4	5/8" Hex Nut
33	4800003	8	3/8" x 1" Hex Bolt
34	5000001	12	3/8" Flat Washer
35	5000019	8	3/8" Lock Washer
36	4900002	4	3/8" Hex Nut

# 7 Conveyor



Ref.	Part No.	Qty.	Description
1	4500191	1	Conveyor Frame
2	4500176	1	Deflector RT
3	4500177	1	Deflector LT
4	4500029	1	Drive Roller
5	6200014	1	Key, 1/4" Sq. x 1-1/4" Long
6	4500180	2	Tightener Bolt, Lower
7	1800007	4	Bearing, 1-1/8" Pillow Block
8	1000092	1	Sprocket 60B20, 1" Bore
9	4500178	1	Bearing Bracket, Upper L.H.
10	4500058	2	Tightener Bolt, Upper
11	4500028	1	Idler Roller
12	1700001	1	Belt, 16" x 39'4" Long
13	4500190	1	Belt Guide
15	5500001	2	Cable Sheave
16	4800026	2	Cable Sheave Pin
17	4800123	2	1/8" x 1-1/2" Cotter Key
18	4900005	4	5/8" Hex Head Nut
19	5000002	4	5/8" Flat Washer
20	4800142	8	3/8" x 1-3/4" Hex Head Bolt
21	4800003	10	3/8" x 1" Hex Head Bolt
22	5000001	24	3/8" Flat Washer
23	5000019	14	3/8" Lock Washer
24	4900002	14	3/8" Hex Nut
25	4900001	2	1/2" Hex Nut
26	5000004	4	1/2" Flat Washer
9A	4500179	1	Bearing Bracket, Upper R.H.

## REGULATION ADJUSTMENT

Regulation is defined as the difference between the valve-open and valve-closed speeds.

This difference is approximately 6% to 8% of the no-load speed, when the governor is preset per instructions. This should provide suitable performance in most cases. Re-adjustment of the eyescrew (B) is not recommended.

But, if necessary, regulation may be adjusted with the eyescrew in the following manner:

Regulation may be made closer by decreasing the 1.00" dimension and resetting the speed adj. screw (C) per instructions. The result will be a more sensitive, quicker-responding governor. . .

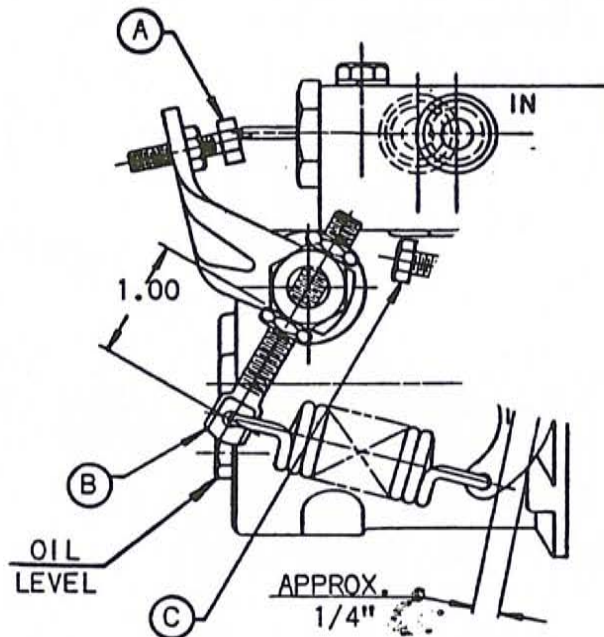
Conversely, regulation can be made broader by increasing the 1.00" dimension and resetting the speed adj. screw (C). The result will be slower-responding, smoother governor performance.

### NOTICE:

THE GOVERNOR HAS BEEN PRELUBRICATED AT THE FACTORY AND DOES NOT REQUIRE ATTENTION FOR THE WARRANTY PERIOD. IF, AFTER THE WARRANTY PERIOD, THE GOVERNOR SHOWS ANY OIL LEAKAGE, THE OIL LEVEL CAN BE CHECKED AND MAINTAINED BY FILLING WITH AN OIL CAN THRU THE "OIL LEVEL" HOLE.



## HYDRAULIC VALVE GOVERNORS



### ADJUSTMENT INSTRUCTIONS

#### INITIAL INSTALLATION ON GRINDER

- Before operating the grinder.
  - Adjust trip screw so it just contacts the valve plunger. Tighten locknut.
  - Adjust regulation screw to obtain 1" from flat side of hex hub to center of hole.
  - Set speed adjusting screw with approximately  $\frac{1}{4}$ " between lever and stop bracket.
- Operate the grinder at the desired full-load speed (the speed at which the grinder should stop incoming material).  
The tub should now be operating at full incoming speed, because the governor speed has not yet been adjusted.
- Turn speed adjusting screw "C" in (to increase tension on the governor spring) until the tub stops. Tighten locknut.
- Increase grinder to the desired no-load speed. The tub should again be operating at full incoming speed.
- Cycling the grinder up and down should demonstrate that the governor is starting and stopping the tub as desired.

#### ADJUSTMENT IN THE FIELD

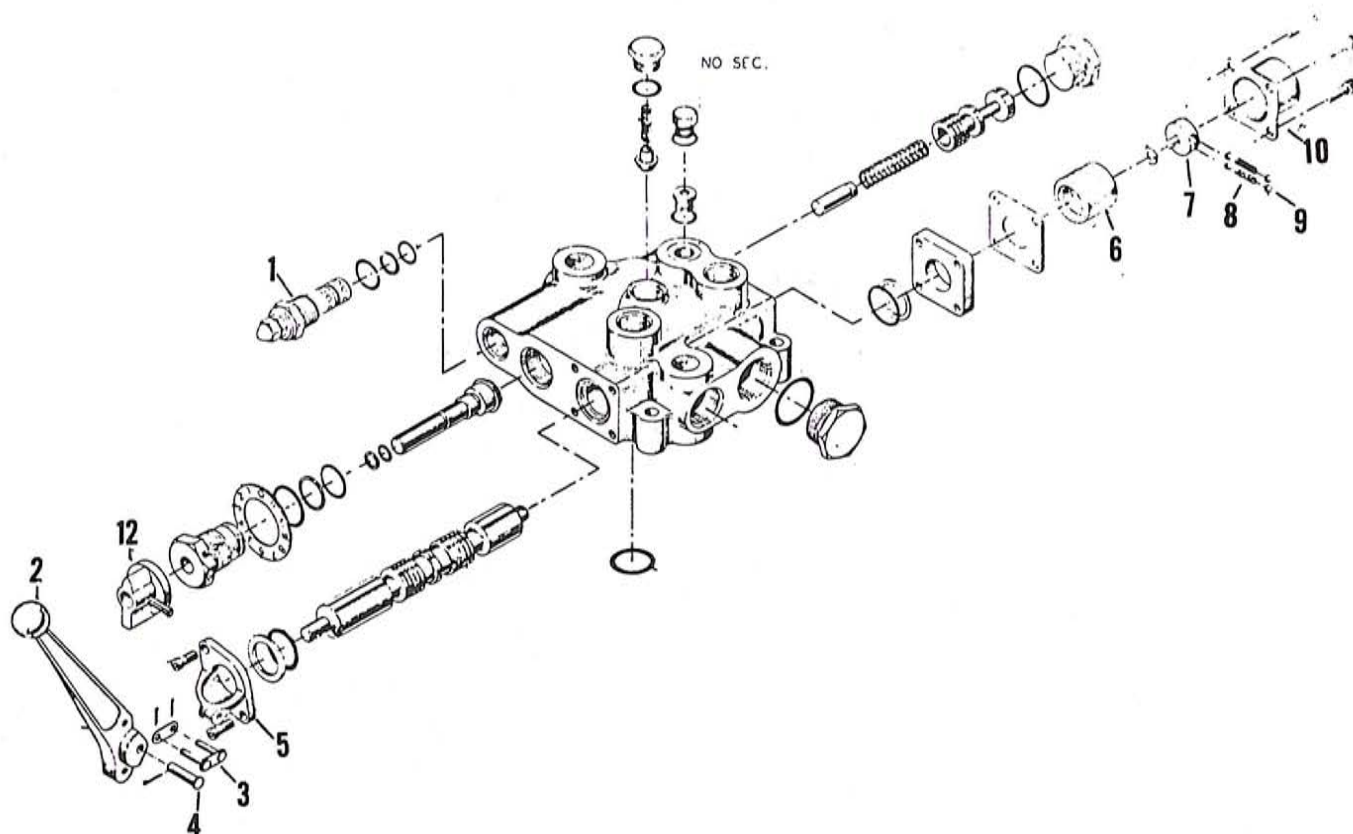
- Follow same instructions as in "initial installation".
- Observe performance while grinding.
  - If tub stops too quickly, before tractor is satisfactorily loaded, turn speed adjusting screw "C" out (to relax tension on governor spring) until satisfactory performance is obtained.
  - If tractor stalls before tub stops, turn speed adjusting screw "C" in (to increase tension on governor spring) until satisfactory performance is obtained.

NOTE: Step # 2 must be performed by field service personnel, or by the operator, because the grinder manufacturer cannot predict the size power unit (tractor) that will be used with each grinder.

Step # 2 might have to be repeated whenever owner/operator changes to different power unit (tractor) of substantially higher or lower P.T.O. power.

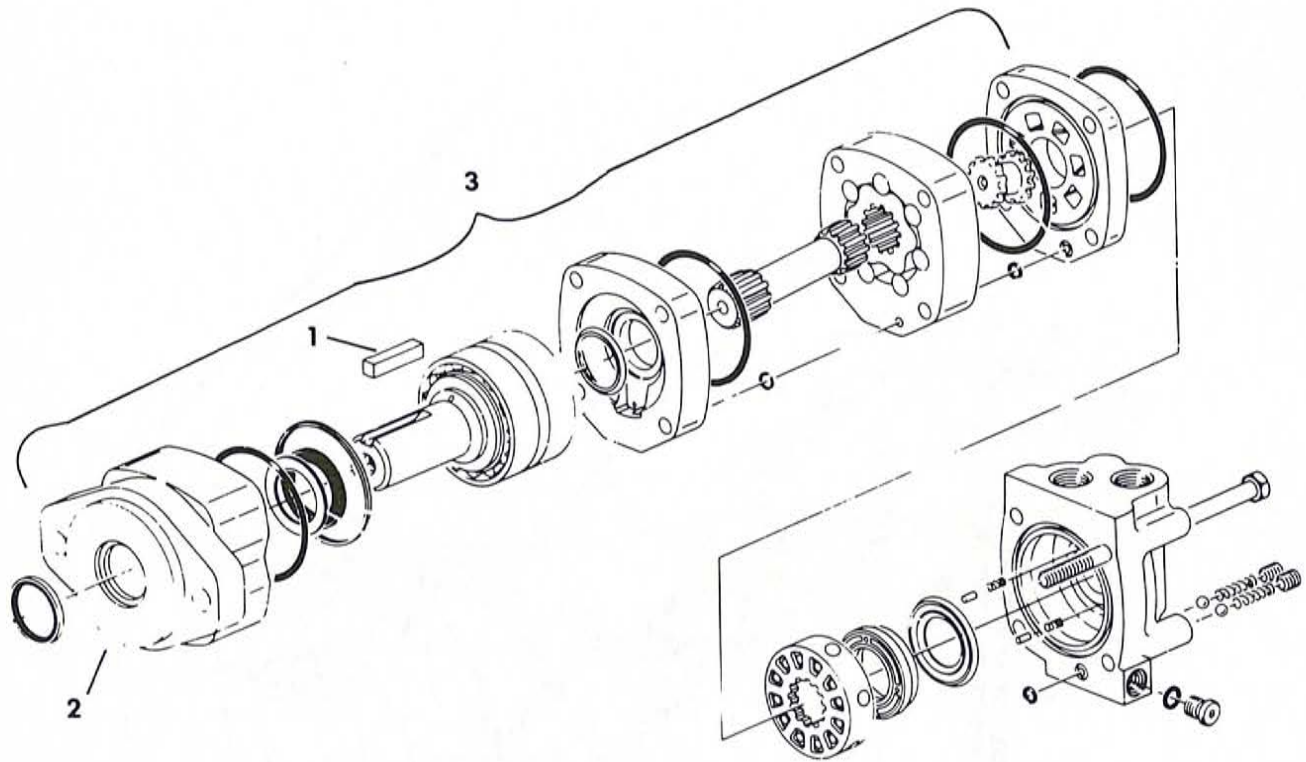
## 9 Hydraulics

### MODEL BC DIRECTIONAL CONTROL VALVE



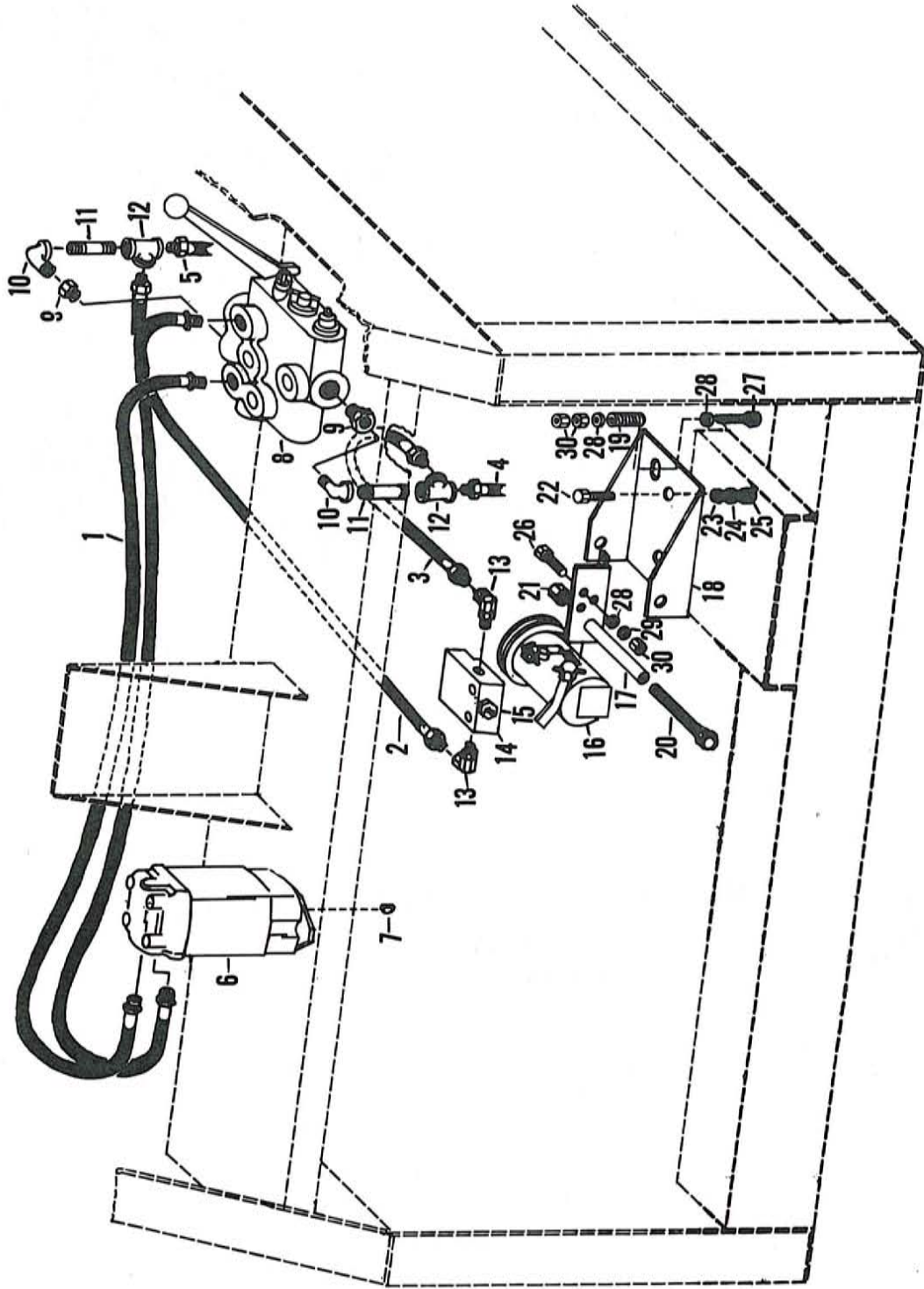
#### Hydraulics Group

Ref.	Part No.	Qty.	Description
1	4000017	1	Adj. Relief Valve
2	4000001	1	Valve Handle
3	4000002	1	Connector Links Handle
4	4000003	1	Pin Handle w/Key
5	4000004	1	Handle Bracket
6	4000025	1	Detent Sleeve
7	4000026	1	Detent Retainer (Screw)
8	4000027	2	Detent Spring
9	4000028	4	Ball (1/4" Steel)
10	4000029	1	End Cap
11	3200009	1	Seal Kit (Not Shown)
12	4000030	1	Knob



Ref.	Part No.	Qty.	Description
1	6200004	1	5/16 x 1-1/2 Key
2	3900005	1	Complete Orbit Motor
3	3200005	1	Seal Kit Complete

# 10 Hydraulics



---

Ref.	Part No.	Qty.	Description
1	3700059	2	Hose, 1/2" x 46"
2	3700014	1	Hose, 1/2" x 12"
3	3700035	1	Hose, 1/2" x 15"
4	3700026	1	Hose, 1/2" x 84"
5	3700076	1	Hose, 1/2" x 96"
6	3900005	1	Orbit Motor
7	6200004	1	Square Key, 5/16" x 1-1/2"
8	4000016	1	Control Valve
9	3800010	2	3/4" to 1/2" Bushing
10	3800008	2	1/2" 90° St. Elbow
11	3800032	2	1/2" x 3" Nipple
12	3800009	2	1/2" Tee
13	3800048	2	3/4" Straight to 1/2" Pipe, 90° Elbow with O-Ring Boss
14	4300002	1	Gov. Control Block
15	4300003	1	Plunger
16	4300001	1	Governor
17	4500161	1	Governor Tightener
18	4500162	1	Governor Bracket
19	6100028	1	Spring
20	4800145	1	1/2" x 6" Hex Head Bolt
21	4900014	1	1/2" Lock Nut
22	4800082	2	1/2" x 1-1/2" Hex Head Bolt
23	5000004	2	1/2" Flat Washer
24	5000006	2	1/2" Lock Washer
25	4900001	2	1/2" Hex Nut
26	4800034	3	3/8" x 1-1/2" Hex Head Bolt
27	4800089	1	3/8" x 4" Hex Head Bolt
28	5000001	5	3/8" Flat Washer
29	5000019	3	3/8" Lock Washer
30	4900002	5	3/8" Hex Nut

---

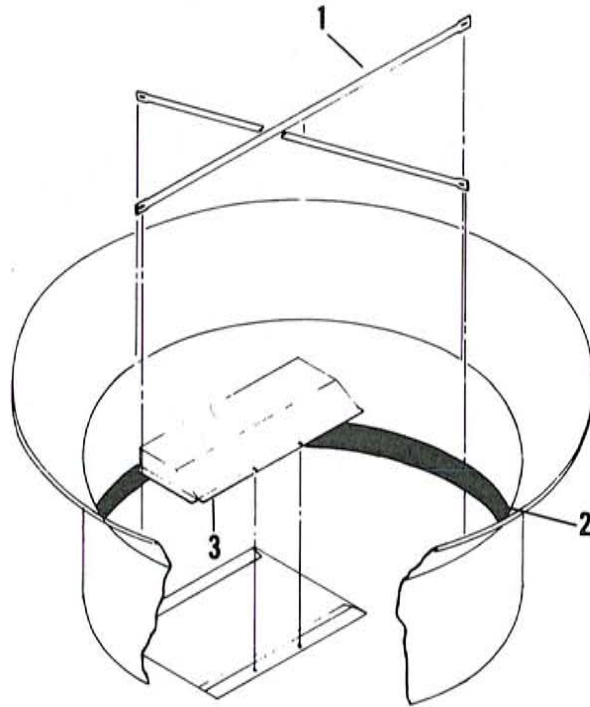
---

---

---

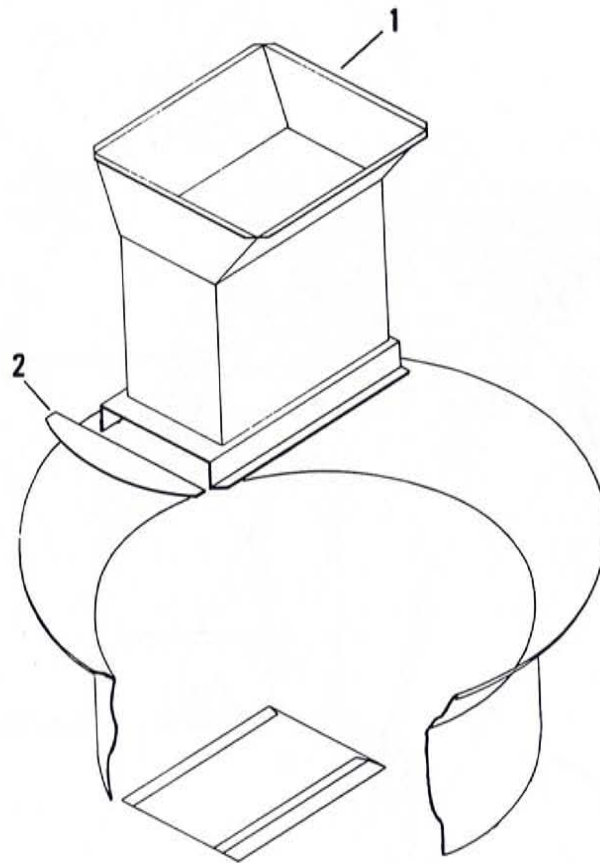
---

# 14 H-900 Cob Grinding Kit



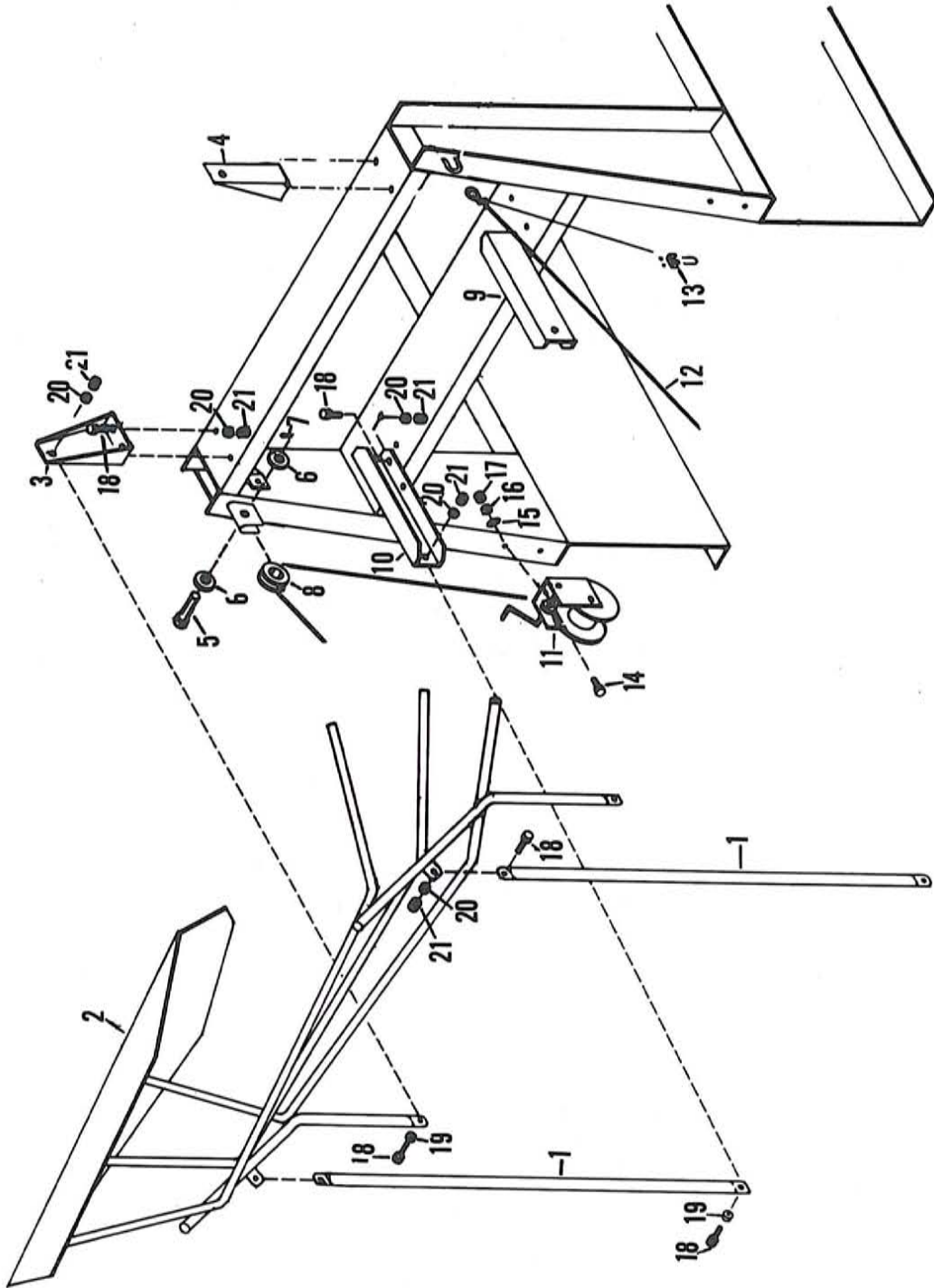
Ref.	Part No.	Qty.	Description
1	4500123	2	Cross Pipe
2	4500122	1	6" Belting
3	4500119	1	Cylinder Cover

# H-900 Grain Grinding Hopper 15



Ref.	Part No.	Qty.	Description
1	4500114	1	Grain Hopper
2	4500118	1	Hopper Plate

# 16 Main Frame - Hay Guide





Ref.	Part No.	Qty.	Description
1	4500181	2	Support Pipes 43"
2	4500098	1	Hay Rack
3	4500183	1	Left Hand Top Bracket
4	4500184	1	Right Hand Top Bracket
5	4800026	1	Pins, 5/8" x 2"
6	5000002	2	Washer, 5/8" Flat
7	4800123	1	Cotter Pins, 1/8" x 1-1/2"
8	5500001	1	Cable Sheaves
9	4500102	1	Right Hand Lower Support
10	4500117	1	Left Hand Lower Support
11	5800003	1	Winch
12	5600009	1	1/4" Cable, 32'
13	4800027	2	1/4" Cable Clamp
14	4800003	2	3/8" x 1" Hex Head Bolt
15	5000001	2	3/8" Flat Washer
16	5000019	2	3/8" Lock Washer
17	4900002	2	3/8" Hex Nut
18	4800007	14	1/2" x 2" Hex Head Bolt
19	5000004	4	1/2" Flat Washer
20	5000006	14	1/2" Lock Washer
21	4900001	14	1/2" Hex Head Bolt

---

---

---

---

---

---

---

---

---

---

---

---

---

---

---

---

---

---

---

---

---

---

