



# STACK-EZE

MODEL 1800 C

OPERATORS MANUAL & PARTS LIST



BOX 1008

JAMESTOWN, NORTH DAKOTA 58401

PHONE: 701-252-4601



## WARRANTY

For one year from delivery date by an authorized dealer, Haybuster Mfg., Inc. will replace or repair for the original purchaser, free of charge, any part or parts found upon examination at our factory in Jamestown, North Dakota, to be defective in material or workmanship under normal use and maintenance.

This warranty does not apply to tires, belts or bearings or any other trade accessories not manufactured by Haybuster. Buyer must rely solely on the existing warranty, if any, of those respective manufactures.

Except as set forth above, Haybuster Mfg., Inc. shall not be liable for injuries or damages of any kind or nature, to person or property. This warranty does not extent to loss of crops, loss because of delay or loss incurred for labor, supplies, substitute machinery, rental or any other reason.

Haybuster Mfg., Inc. reserves the right to make improvements in design or changes in specifications at any time, without incurring any obligation to owners of units previously sold.

This warranty shall become void if a valid warranty registration is not on file at Haybuster Mfg., Inc., Box 1008 Jamestown, North Dakota 58401 within 30 days of the purchase date, and/or if the machine has been subject to misuse, negligence, alterations, accident or lack of required maintenance.





# **SPECIFICATIONS FOR THE MODEL 1800 STACK EZE-**

Round bed size . . . . .	18' diameter 254 sq. ft.
Bed height . . . . .	38 inches
Overall height, conveyor extended . . . . .	22 feet
Overall height, conveyor down . . . . .	17 feet
Height from platform to bottom of roller conveyor extended . . . . .	16½ feet
Height in transport position . . . . .	9 feet
Width for transport, wings folded . . . . .	10 feet
Overall length . . . . .	30 feet
Weight, approximately . . . . .	10,500 lbs.
Hay capacity, in tons . . . . .	up to 8 tons
Suspension . . . . .	6-1100x16 flotation tires
Hydraulic bed tilt . . . . .	yes
Push off . . . . .	mechanical, chain driven, hydraulic powered
Pick up . . . . .	5½ feet wide, with retractable fingered auger
Conveyors . . . . .	2-36" wide belts in front, 1-36" wide belt on packer conveyor
Packer roller . . . . .	30 inches, 1300 lbs. continuous pressure
Tractor requirements . . . . .	50 hp., depending on soil conditions
Hydraulic requirements . . . . .	single, remote control tractor system



# MACHINE SET UP

## Raising the conveyor:

1. Remove all bolts, chains and wires used to tie down various parts of the machine.
2. Remove the platform locking bolt.
3. Remove racks, roller, wheels and wings from the machine.
4. INSTALL THE REAR CONVEYOR BELT AT THIS TIME.  
(This is the 17' 10" belt) The splicing should meet at the back, or idler roller. Install the cable and cut off the excess. Install the lock sleeve and clamp with a vise grip or pliers. ADJUST THE TIGHTENER SPRINGS TO 3" COMPRESSION ON EACH SIDE.
5. Install a cable or chain in the hook eyes provided on the center cross bar. Block or anchor the machine when pulling up the conveyor. PULL UP THE CONVEYOR WITH YOUR TRACTOR ONLY FAR ENOUGH TO HOOK UP THE TWO LIFT CYLINDERS TO THE TOP CONVEYOR. After cylinders are connected use caution and finish lifting the conveyor. Install the two 5/8 bolts in the support pipes and tighten securely.

## Installing the outside wheels: [PLATE-145]

1. The outer wheels hook under the side frame rails and are held in place with two bolts.

Bolt the steel sheets to the bed between the beams.

Install the platform wing sections.

Install the upright conveyor belts:

1. Install the front belt from the top down. (This is the 25' 9" belt.) Have the splicing meet at approximately four feet above the bottom idler roller for simplest installation of the cable. Use the same procedure on the cable as for the rear conveyor belt. ADJUST THE TIGHTENER SPRINGS TO 3½" COMPRESSION WITH THE HANDLE LOCKED OVER CENTER TO TIGHTEN THE BELT.
2. Install the rear upright conveyor belt from the back side of the conveyor, up over the top roller and down between the front and back conveyors so that the splicers meet approximately four feet above the bottom idler roller on the back side of the conveyor. Use the same procedure when installing the cable. ADJUST SPRINGS TO 3½" COMPRESSION. (This is the 25' 3" belt)

AFTER OPERATION IN THE FIELD SOME ADDITIONAL ADJUSTMENT MAY BE NEEDED.

[PLATE-144]

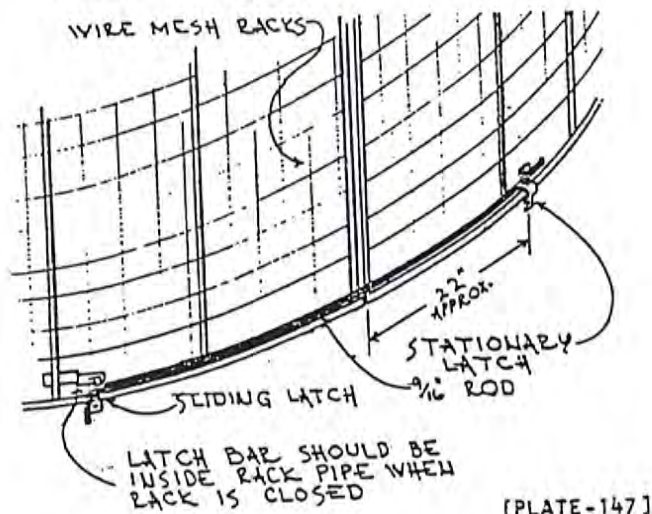




Install the racks: [PLATE-147]

1. Bolt down the front section.
2. Hook the second and third sections into the front section and bolt down.
3. Hook the rear gates into the second and third sections and lock with cotter pins.
4. Install the gate hold open latches by following the procedure outlined below.

1. Install the sliding latch first. NOTE: The sliding latches are assembled right and left hand. BE SURE YOU HAVE THE CORRECT LATCH.
2. Open the gate far enough so that the stack would clear if you were unloading a stack. Bolt on the stationary latch as per the drawing.
3. Repeat the procedure for the other gate.



Install the packer roller: [PLATE-193]

1. Bolt the extension arm to the packer conveyor.
2. Install the roller. The packer roller is turned by the hay on the revolving platform.

Hydraulic downpressure is maintained by a relief valve on the conveyor lift cylinders.

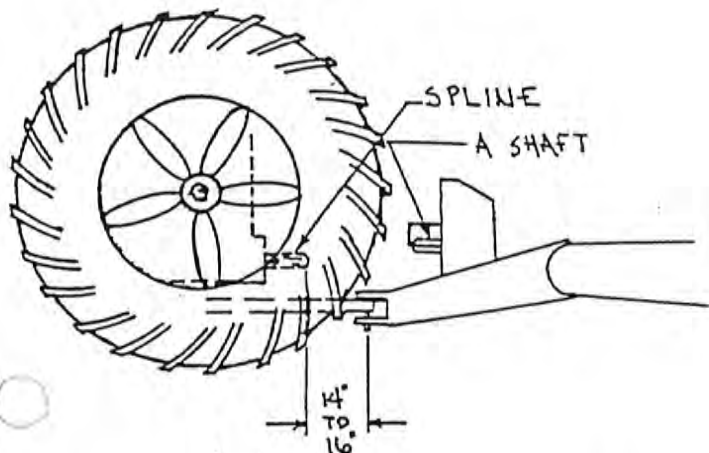


# PREPARATION

Before taking the machine to the field for the first time follow the following procedure.

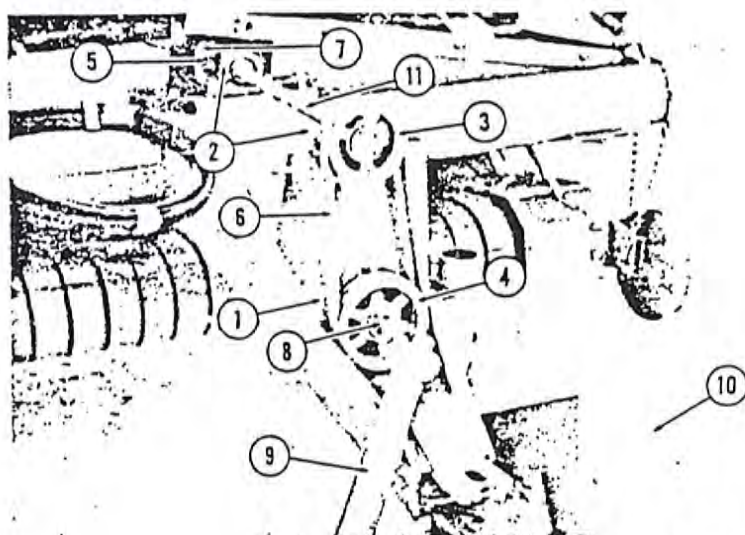
## Tractor Hook Up

To insure smooth operation while turning, the stacker must be properly coupled to the tractor. Before coupling together, measure from the end of the PTO spline to the center of the drawbar hole. Adjust the drawbar until this distance is between 14 and 16 inches, as shown in the sketch below. Use a 1" hitch pin that is the proper length and well secured.



When installing the machine end of the universal joint on the A shaft install it flush with the outer end of the shaft. (Picture) The 1/4" key is in the parts bag. After the PTO is installed, turn the tractor carefully as short as possible and make certain the PTO does not bottom. If the PTO bottoms in turns, the A shaft will be bent.

The PTO speed is normally furnished in 540 RPM.



[PLATE-115]

## Stack-Eze Run In:

1. Make sure the hitch stand is in the raised position.
2. Make sure the two straps (One on each side of the pick up) have been removed. These straps are used to hold the pick up, up for long distance traveling.
3. Remove the bolt from the front left corner of the platform. This bolt holds the platform in place while transporting the Stack-Eze.
4. Run the Stack-Eze with the tractor throttled down for a short period. Shut off the tractor and make a careful check for loose bolts, loose set screws, binding parts, loose belts or chains, misaligned sprockets and pulleys, and other irregularities. **RECHECK AFTER THE FIRST DAYS OPERATION.**
5. Start the tractor again and operate the Stack-Eze at full throttle speed for 15 minutes. Test the operation of the hydraulic controls, observe the operation of moving parts, note any signs of faulty operation.
6. Stop the Stack-Eze, shut off the tractor and check all belts, and chains and correct any misalignment or incorrect tension. Check and if necessary lubricate moving parts.

[PLATE-149]





## Installing the valve bank on the tractor

The hydraulic valve bank must be attached to the tractor fender, or to a support rack built for it. In the picture at the right, a support rack has been built.

### CAUTION

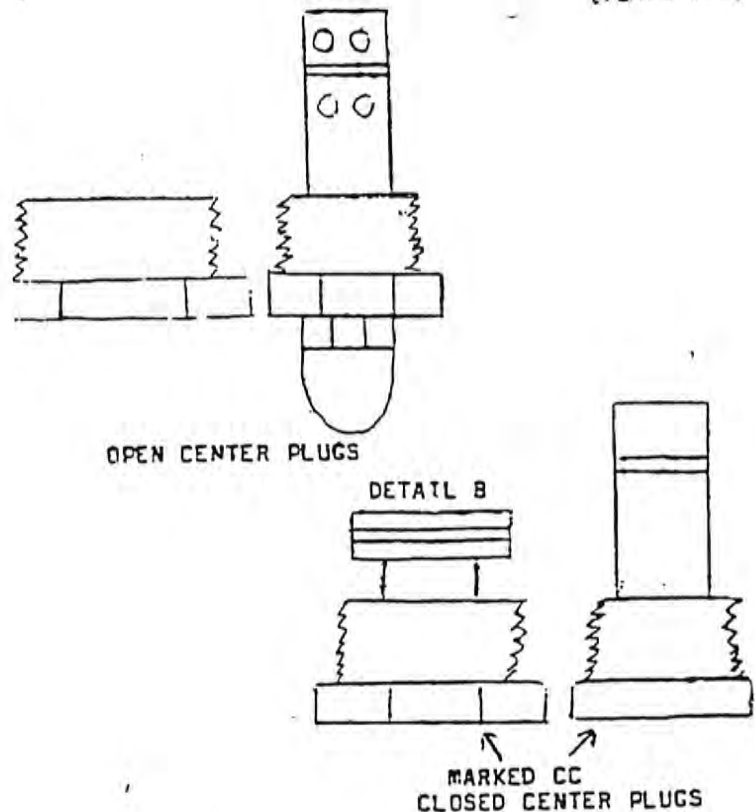
Two types of hydraulic systems, open center and closed center are used on farm tractors. Because the oil pressure to operate the Stack-Eze is taken from the tractor's system, the stacker valve must be the same as the tractors. If it is not, heating of the tractor oil supply will occur. REFER TO YOUR TRACTOR MANUAL OR CONTACT YOUR TRACTOR DEALER TO DETERMINE IF YOUR TRACTOR HAS AN OPEN OR CLOSED SYSTEM.

The valve bank is easily changed from closed to open center or vice versa by changing two plugs. Closed center plugs are marked CC (detail B). The large plug (either open or closed) goes in the 2 spool bank. The small plug (either open or closed) goes in the 3 spool bank. Both plugs must be changed. IF YOUR STACKER IS EQUIPPED WITH THE WRONG SYSTEM, EXCHANGE THE PLUGS AT YOUR DEALER. FOR THE PROPER ONES. CLOSED CENTER PLUGS ARE MARKED CC. OPEN CENTER PLUGS ARE NOT MARKED.

Attach the male end quick couplers (not furnished) to the  $\frac{1}{2}$ " valve bank hoses. Plug into the tractor system. The hydraulic system is shipped dry and will take about 5 gallons of oil from the tractor system to fill. Operate all systems in order to fill and check for leaks. THE TRACTOR CONTROL LEVER MUST BE FASTENED INTO THE ON POSITION. The Stack-Eze valve bank is protected by a line check. If the system fails



[PLATE-102]



to operate reverse the hoses at the quick couplers or move the tractor control lever in the opposite direction.

**CAUTION:** A strong well secured hitch pin is important to prevent breakaway of the stacker from the tractor. We recommend vise grips to hold the valve bank to the support rack.

## HAYBUSTER STACK EZE LUBRICATION

**GEAR BOXES:** All gear boxes are factory lubricated with #90 grease and STP. The gear box which drives the tumbling shaft has a zerk on the top bearing cover. GREASE PERIODICALLY.

Oil all chains sparingly with light oil.

**UNIVERSAL JOINTS:** Service all universal joints and square sliding shafts weekly.

The following zerk locations should be greased daily.

Main conveyor ball joint pivot. Conveyor torque arm pivots.

Power take off slide. Overrunning clutch Pickup wheels.

Bearings which are equipped with zerk should be greased several times a season.

[PLATE-17]

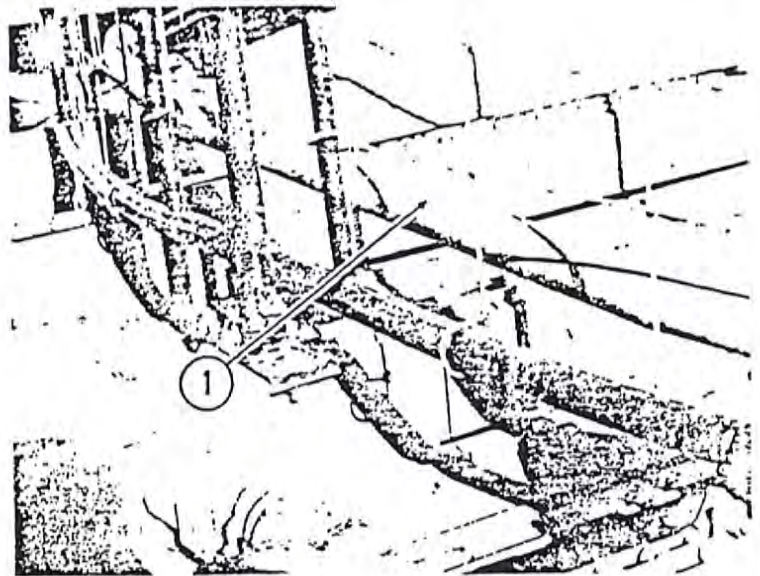




# OPERATION

## Taking your Stack-Eze to the field [PLATE-191]

1. Be sure the hitch stand is in the raised position.
2. Raise the pick up hydraulically for adequate clearance.
3. Limit your towing speed to ground conditions and be sure the top conveyor is in the lowered position.
4. CAUTION: Overhead high voltage lines are dangerous. Remember your stacker height and be careful of telephone and electrical lines.

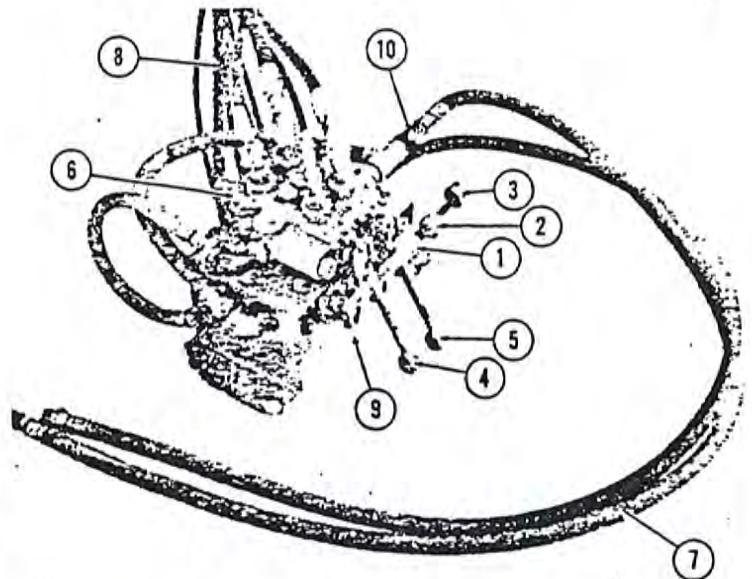


## Loading your Stack-Eze

**GROUND SPEED:** The size of your windrow and the roughness of the ground will be factors in determining your ground speed.

**PUSH OFF BAR:** Make sure the push off bar is in the forward position before loading. (No. 1 in the picture).

**CAUTION:** Be careful when moving the bar to the forward position, that you do not overrun the bar. The same applies when unloading.



**VALVE BANK:** Only the top three levers on the valve bank are used while loading the stacker. (No. 1, 2, 3 in the picture).

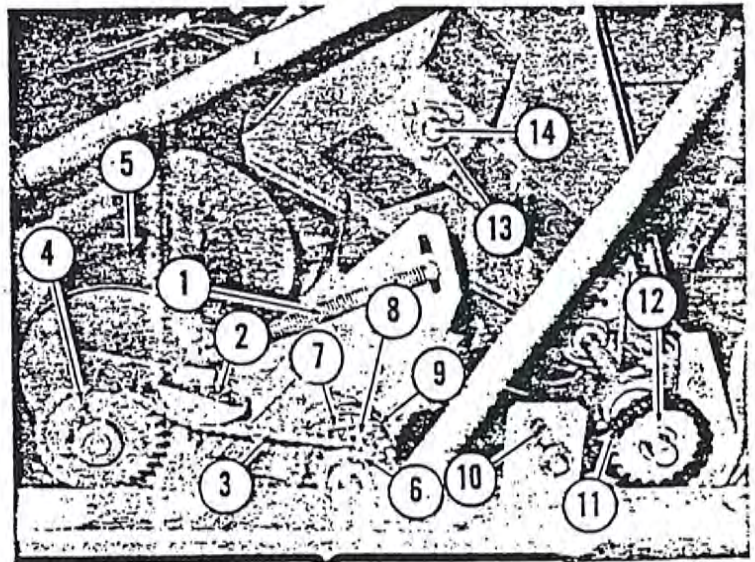
Lever 4 & 5 are used for unloading.

[PLATE-103]

**Pick Up:** The wheels and balance springs on the pick up, allow it to float over most obstructions.

If hay builds up between pick up bands, lower the auger so that it just clears the pick up bands and rear hay guides. Loosen the tension on the auger float springs. (No. 1 in the picture) On some pick up models it may be necessary to remove the springs.

In order to insure an even, continuous flow of material to the conveyor, the pick up auger, retracting fingers must be correctly timed. THE FINGERS SHOULD BE FULLY RETRACTED INSIDE THE AUGER TUBE WHEN THEY POINT REARWARD.



[PLATE-152]

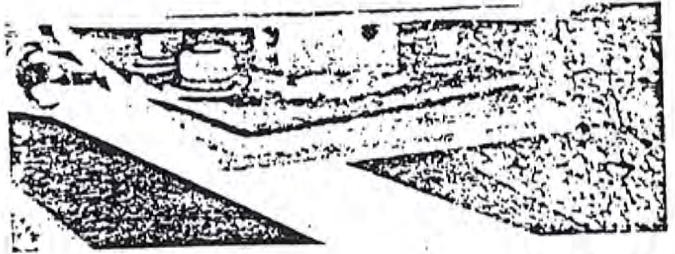




# OPERATION

Late retraction can cause the hay to be carried up and over the top of the auger.

The timing adjustment hub is on the shaft at the right side of the auger tube. ▶



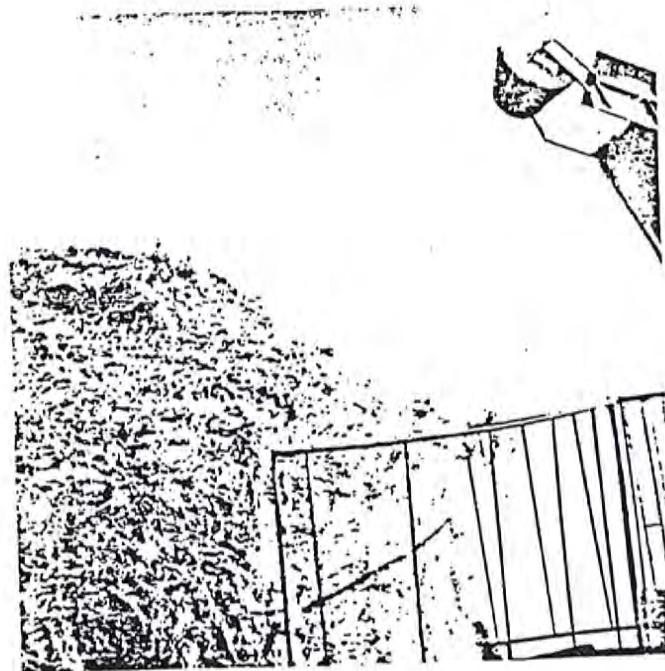
[PLATE -153]

Topping out your stack: Build the load straight up above the rack as far as possible before topping out the stack. ALWAYS KEEP THE CENTER WELL FILLED & PACKED. When topping out the packer roller should be worked up and down to allow hay to be pushed out of the tube. Slowing the ground speed will also make it easier to top out.

Moving your stacker while loaded: After the load is complete, disengage the PTO and wait until the platform stops rotating and lower the roller on top of the hay, if the load is to be moved to an unloading area.

## Unloading your stacker:

1. Raise the packer roller clear of the load.
2. Rotate the platform with the PTO drive until the push off is toward the front.
3. Unlock the rear gates and swing outward into the latched position.
4. Operate the dump cylinder valve handle to tilt the bed. Tilt only until the rear of the main frame touches the ground.
5. Operate the hydraulic motor valve handle to push the stack off.
6. After the stack is partially on the ground drive the stacker slowly forward as the push off bar travels rearward. CAUTION: DO NOT RUN THE PUSH OFF BAR ALL



## THE WAY TO THE REAR.

7. When the stack is clear, lower the til bed.
8. Reverse the push off valve lever to move the push off bar to the forward position. CAUTION: DO NOT RUN THE PUSH OFF BAR PAST ITS NORMAL FORWARD POSITION.
9. Close and latch the gates. IT MAY BE EASIER TO PERFORM THIS OPERATION WITH THE BED TILTED, BECAUSE OF THE WEIGHT OF THE GATES.

[PLATE -14]







**HAYBUSTER**

**1800  
STACK-EZE  
PARTS**

PRICE \$3.00

HAYBUSTER MANUFACTURING, BOX 1950, JAMESTOWN, NORTH DAKOTA 58401





---

## Specifications for Model 1800C Stack-Eze

Round bed size .....	18 feet diameter, 254 square feet
Bed height .....	38 inches
Overall height, conveyor extended .....	22 feet
Overall height, conveyor down .....	17 feet
Height from platform to bottom of roller, conveyor extended .....	16 feet 6 inches
Height in transport position .....	9 feet
Width for transport, wings folded .....	10 feet
Overall Length .....	30 feet
Weight (approximately) .....	10,000 pounds
Hay capacity, in tons .....	up to 8 tons
Suspension .....	6-11L x 16 tires
Hydraulic bed tilt .....	yes
Push off .....	mechanical, chain driven, hydraulic powered
Pick up .....	5-1/2 feet wide, with retractable fingered auger
Conveyors .....	2-36" wide belts in front 1-36" wide belt on packer conveyor
Packer roller .....	30 inches with 1,300 lbs. hyd. pressure
Tractor requirements .....	60 hp. depending on soil conditions
Hydraulic requirements .....	single remote control tractor system

## CONTENTS

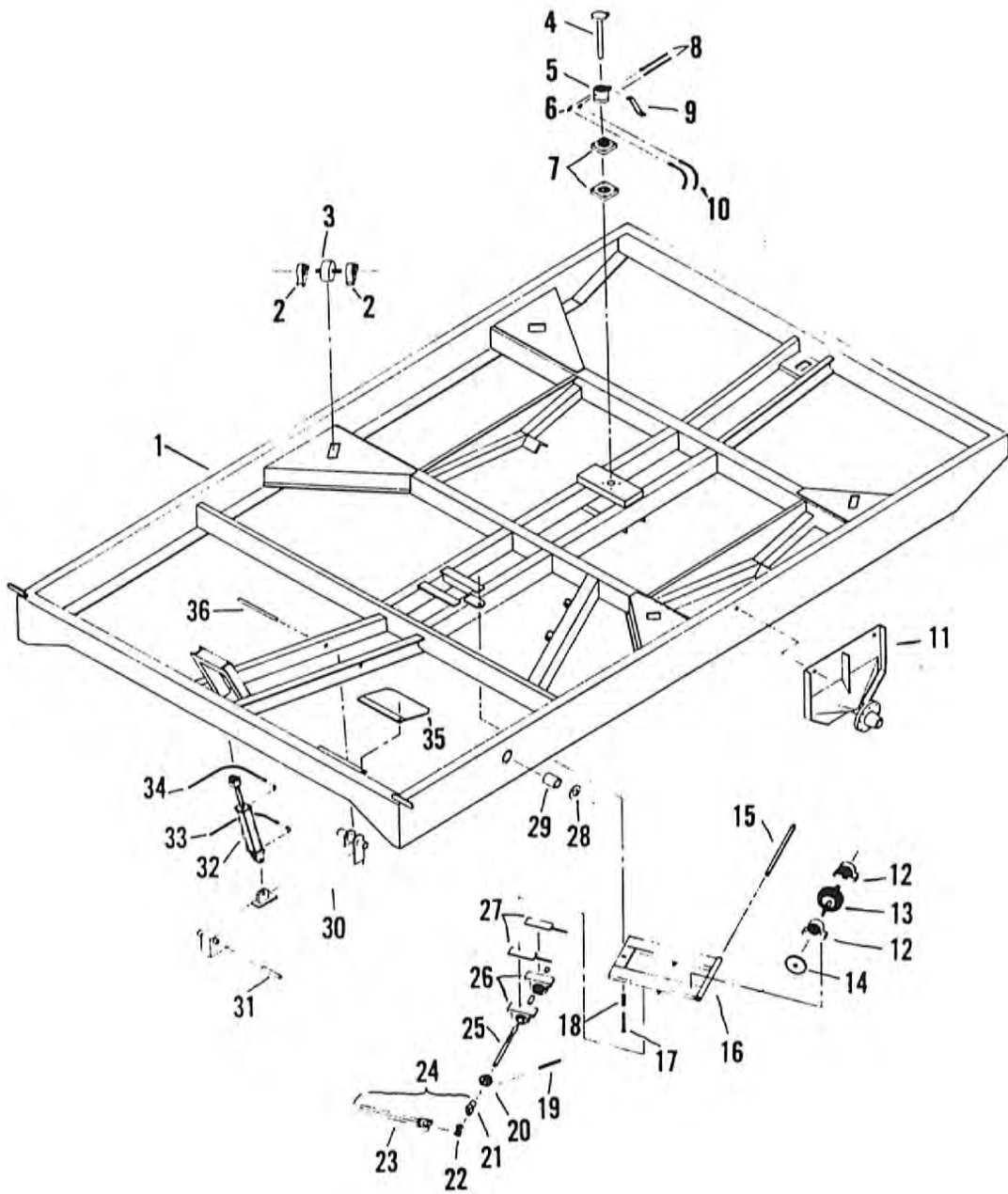
This book is printed in ten sections: Main Frame, Platform, Racks, Gooseneck, Pickup, Main and Moving Conveyor, Packer Conveyor, Hydraulics, Gear Boxes and Tires & Wheels.

The Pages in this book are numbered consecutively throughout the entire book.

When changes to the machine make it necessary, revised or additional pages for this book will be issued with complete directions for additions and deletions. The revised pages will be issued with the same page number as those they replace. The new additional pages, however, will either carry the next consecutive number or a suffix behind the page number (2-A, 2-B, 3-C, etc.) giving the proper location for the new page to be placed in the book. Revised parts pages must be inserted into the book as soon as received. Failure to do so will result in confusion and defeat the purpose of the book.

---

## 2 Main Frame



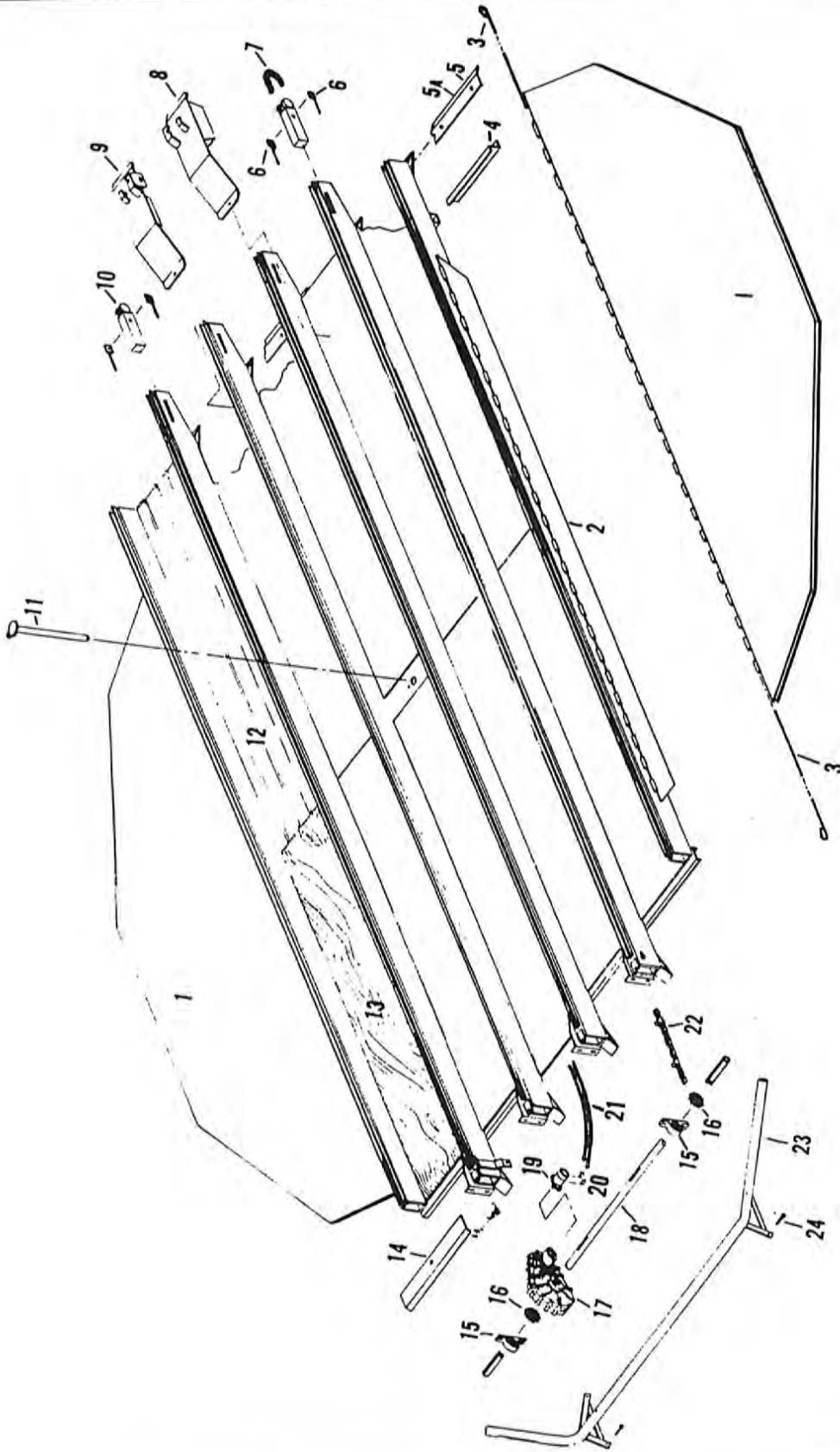
Ref.	Part No.	Qty.	Description
1	4600120	1	Main Frame
2	1800005	12	Bearings Pillow Block, 1-3/4"
3	1200009	6	Roller Bed MF-56-B
4	2300029	1	Center Pin PL-5-B PL-14-B
5	4100022	1	Center Swivel
6	3800040	2	Fittings, 1/2" 45° St. Elbows
7	1900011	2	Bearing, 4 Hole Cast Flange, 1-3/4"
8	3700046	2	Hyd. Hose, 1/2" x 126"
9	4600098	1	Bracket, Center Pin MF-33-B
10	3700047	2	Hyd. Hose, Nylon, 1/2" x 380"
11	4600121	2	Outside Wheel Bracket/less Hub
12	1800004	2	Bearing Pillow Block, 1-3/8"
13	2600002	1	Drive Tire w/Wheel & Shaft -MF-53-B MF-44-B New Tire 51 x 1.6
14	1000009	1	Sprocket 60P, 36T 1-1/4" Bore
15	4600096	1	Pin, 18" x 1" MF-55-B
16	4600122	1	Cradle, Drive Tire MF-37-B
17	4800023	1	Bolt, 5/8" Ready Rod x 7-1/2"
18	6100005	1	Spring Table Drive
19	1100012	1	Chain, 60 P. 53L & CL
20	1000008	1	Sprocket 60P 15T, 1-1/4" Bore
21	3600011	1	Yoke, 1-1/4" Rd. G6N
22	3600008	1	Cross & Bearing G6N
23	3600009	1	Female Tube & Yoke
24	3600023	1	Female Half Power Shaft
25	2300030	1	Shaft, 1-1/4" x 26" MF-54-B
26	1800002	2	Bearing Pillow Block, 1-1/4"
27	4600123	1	Slide Tightener MF-43-B
28	5000002	2	Washer, 5/8"
29	2000015	2	Bushings, 3/4" I.D. x 1-1/2" O.D. x 2-1/8" Long MF-41-B
30	4600124	1	Bracket Dump Cylinder
31	4800069	1	Pin, 1" x 6-1/4" MF-51-B
32	4100002	1	Hyd. Cyl., 3" x 12"
33	3700009	1	Hyd. Hose, 1/4" x 332" White
34	3700010	1	Hyd. Hose, 1/4" x 338" Red
35	4600041	1	Shield
36	4800068	1	Pin, 1" x 10" MF-52-B

After Serial # 1520

21A	3600073	Yoke 1 1/4" Rd	14N.
22A	3600074	Cross + Brq	14N.
23A	3600071	Female tube + Yoke	14N
24A	3600069	Female Half Power Shaft	14N.
27	3600070	Male Half Power shaft	14N (Not shown)
38	3600072	Male Shaft w/Yoke	14N (Not shown)
39	3600074	Cross + Brq	14N (Not shown)
40	3600073	Yoke 1 1/4" Rd	14N (Not shown)



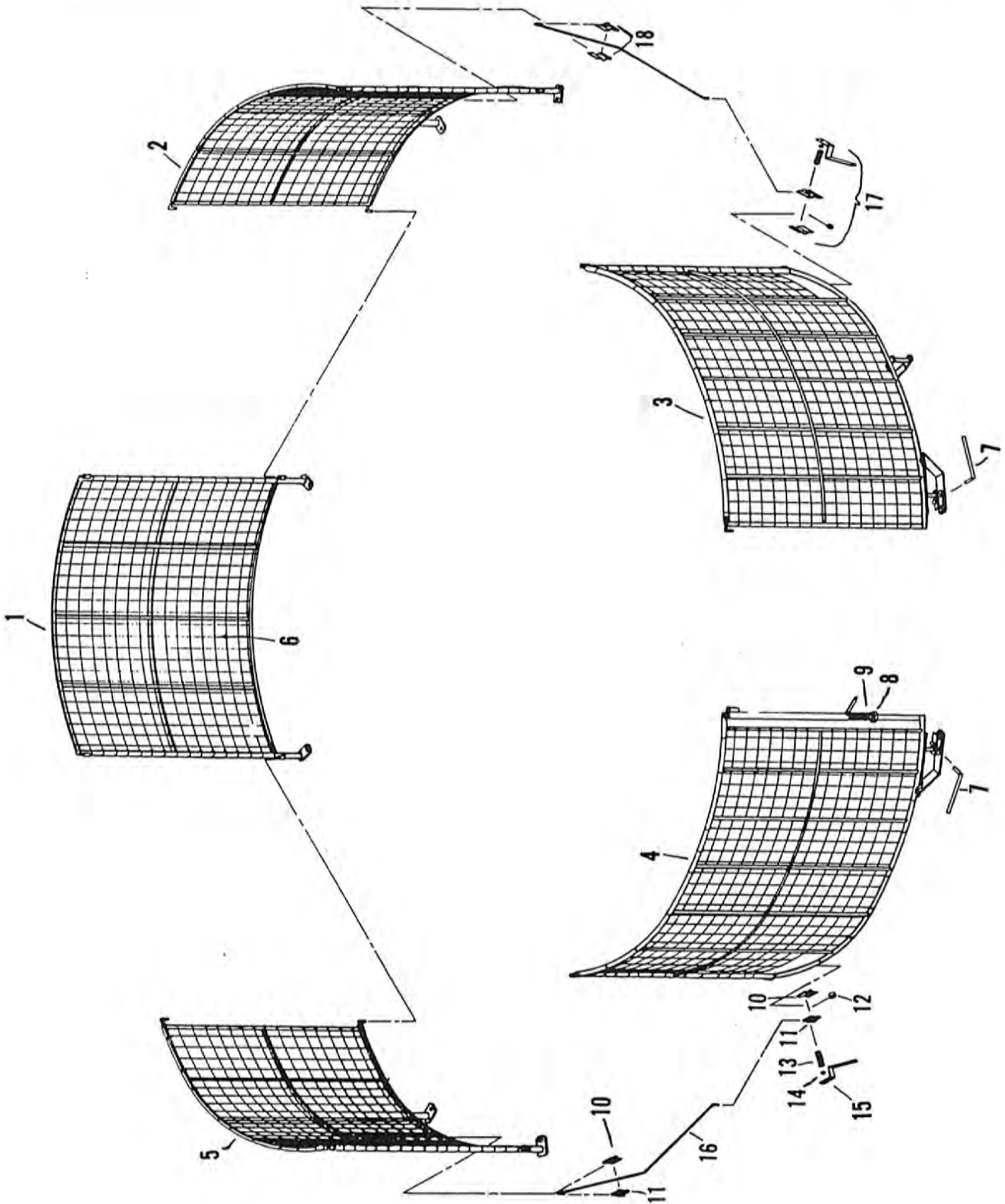
# 4 Platform



# Platform 5

Ref.	Part No.	Qty.	Description
1	4600111	2	Wings PL-11-B W-8
2	4600112	1	Platform
3	4600113	4	Wing Rods
4	4600114	3	Beam Stabilizer Angles PL-20
5	4600115	1	Floor Bracket, 68-1/2" Long PL-13
5A	4600116	1	Floor Bracket, 48-1/4" Long PL-14
6	4600025	4	Bolt Tighteners, Rear Slide PL-7-B
7	1100075	2	Chain 2062 81 L. & CL
8	4600036	1	Lock Plate L.H. Platform
9	4600037	1	Lock Plate R.H. Platform
10	4600026	2	Slide Tighteners, Rear Beam
11	2300029	1	Center Pin PL-5-B PL-14-B
12	4600117	10	Platform Sheets, Steel
13			Platform Sheet, Wood N/A
14	4600118	1	Bracket, Front Rack PL-15
15	1800001	2	Bearing P.B., 1-1/2"
16	1000005	2	Sprocket 8T, 1-1/2" Bore
17	3100062	1	Gear Box Push Off
18	2300028	1	Shaft, 1-1/2" x 79" PL-23-B
19	3900001	1	Orbit Motor
20	3800040	2	Fitting, 1/2" 45° St. Elbows
21	3700055	2	Hyd. Hoses, 1/2" x 126"
22	1100076	2	Chain, 2062 W/Attachments 221 & CL
23	4600119	1	Pushoff Bar PL-19-B PL-20-B PL-21-B
24	4800070	2	5/16" x 2" Fine Thread w/2 Nuts

# 6 Racks

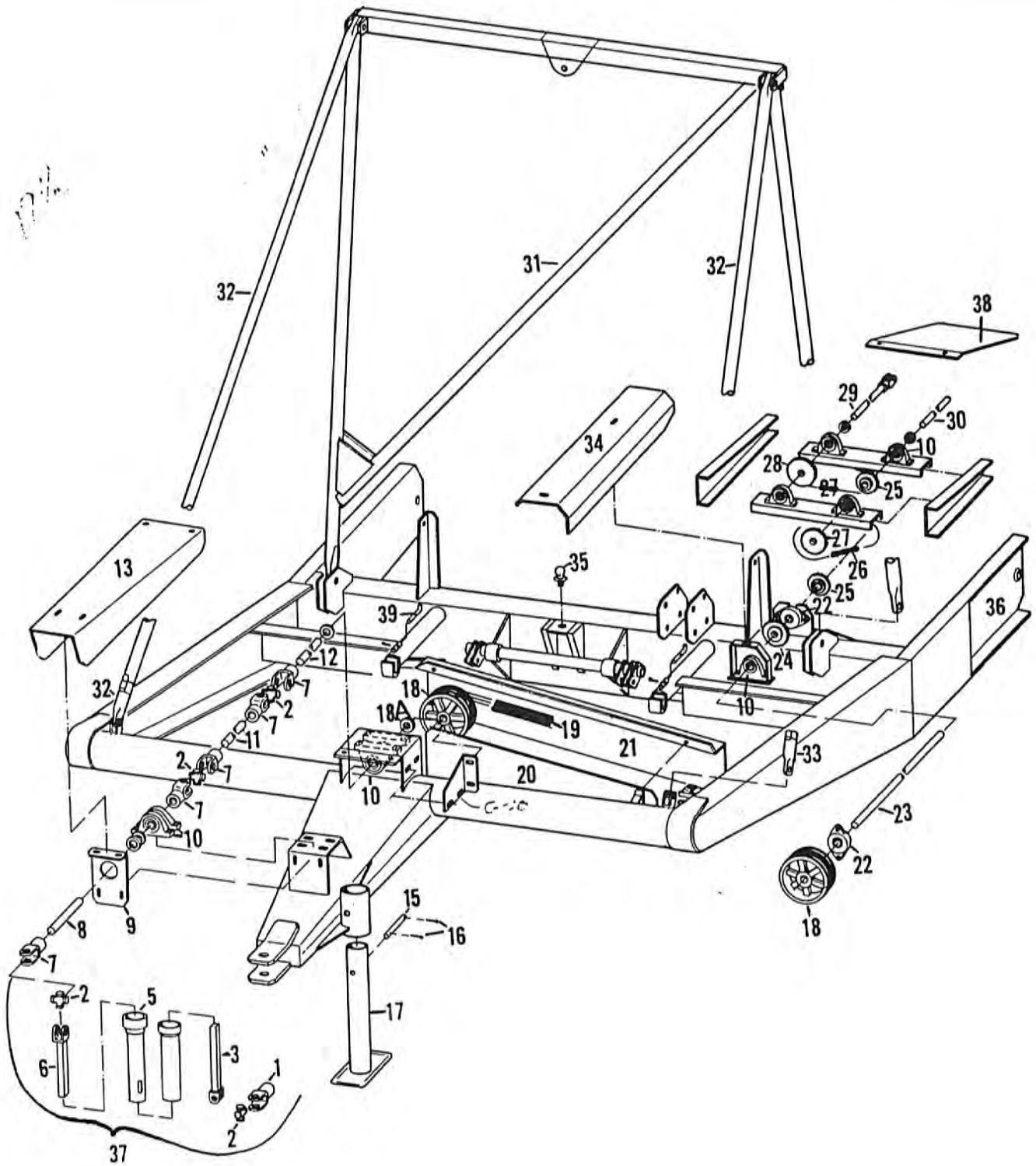


# Racks 7

Ref.	Part No.	Qty.	Description
1	4600125	1	Front Rack <i>R-1 R-2 R-3 R-4</i>
2	4600126	1	R.H. Rack
3	4600127	1	R.H. Gate
4	4600128	1	L.H. Gate
5	4600129	1	L.H. Rack
6	4600130	1	Wire Mesh
7	4600027	2	Handle - Gate Lock <i>R-24</i>
8	2200001	1	Lock Collar, 1-3/8"
9	6100003	1	Spring Compression, 7-3/8" Long
10	4600021	4	Clamp Inner <i>R-36 R-32</i>
11	4600017	4	Clamp Outer <i>R-35</i>
12	4600035	4	Pipe Spacer, Latch <i>R-31</i>
13	6100002	1	Spring Compression, 11/16" x 2-3/16"
14	5000001	1	Flat Washer, 3/8"
15	4600020	2	Slide Latch Handle, Gate Hold Open <i>R-33</i>
16	4600022	2	Rod, Gate Hold Open <i>R-34</i>
17	4600131	2	Slide Latch Complete
18	4600132	2	Clamp Complete

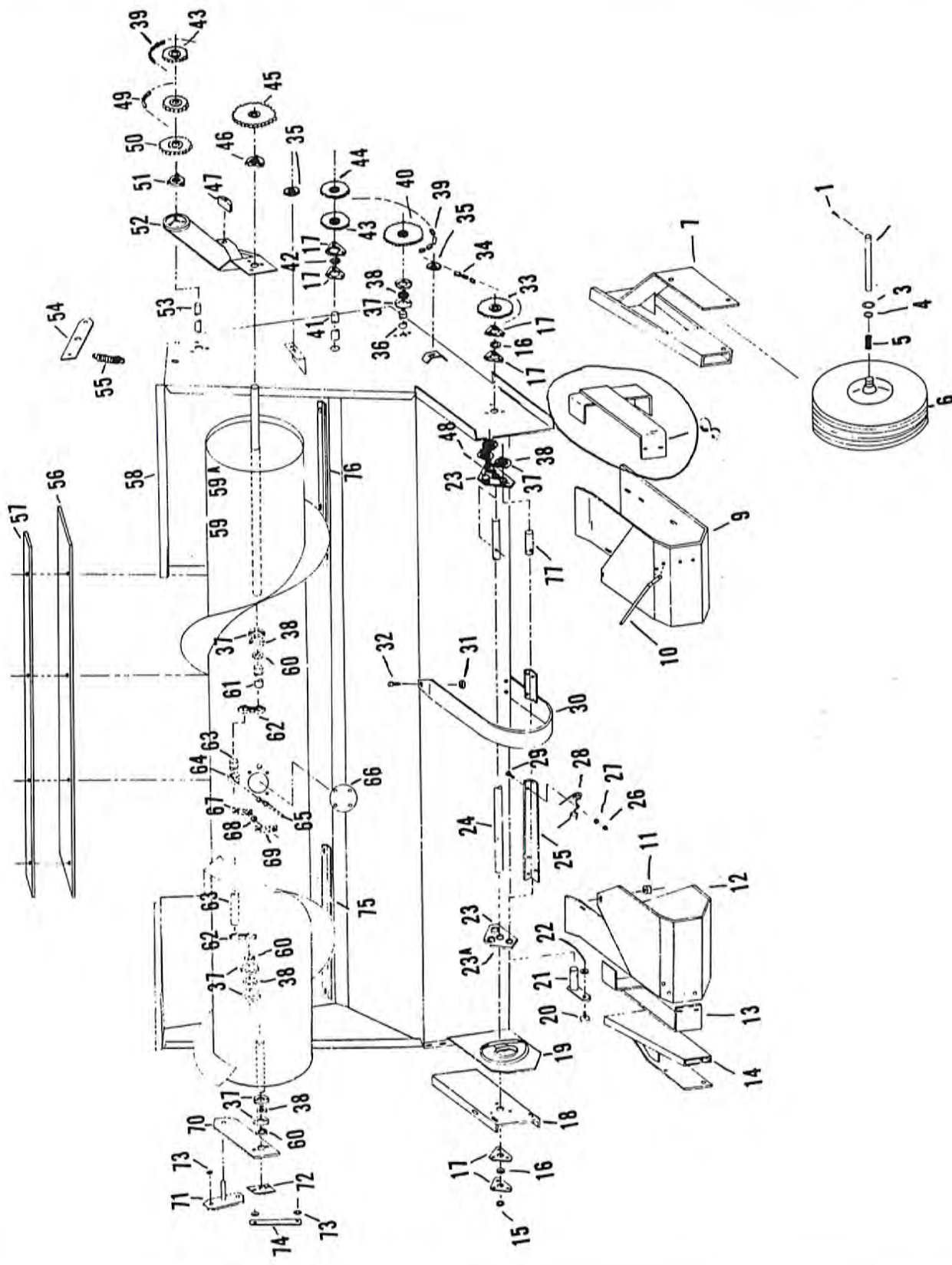


# 8 Gooseneck



Ref.	Part No.	Qty.	Description
1	3600003	1	Yoke, Tractor End
2	3600004	4	12 N Series Cross & Brg.
3	3600026	1	Male Shaft W/Yoke
4	3600027	1	Outer Shield
5	3600028	1	Inner Shield
6	3600029	1	Female Tube W/Yoke
7	3600030	5	Yoke, 1-1/4" Bore
8	2300034	1	Shaft 7-1/2" x 1-1/4" G-35-B
9	4600165	1	Shield Support Front G-35-
10	1800002	9	Bearings P.B. 1-1/4"
11	2300035	1	Shaft 10-1/4" x 1-1/4" G-34-B
12	2300036	1	Shaft 12" x 1-1/4" G-33-B
13	4600166	1	Shield Upper P.T.O. G-34
14	4600167	1	Shield Bracket
15	4800001	1	Pin Jack Stand 3/4" x 5-1/2"
16	6200001	2	Pin Cotter 3/16" x 1-1/2"
17	4600012	1	Stand Hitch Pz G-23-B G-22
18	1400002	2	Pulley Cast 8 P 3 Gr.
18A	1500001	2	Hub 1-1/4"
19	1600016	3	Belts B-105
20	4600168	1	Shield Belt Front G-32
21	4600169	1	Shield Belt Back G-33
22	1900001	1	Bearing Cast Flange 2 Hole 1-1/4"
23	2300037	1	Shaft C 54" x 1-1/4" G-32-B
24	1000006	1	Sprocket 60 P 20 T 1-1/4"
26	1100002	1	Chain 60 P 57 L - CL
27	1000004	1	60 P 30 T 1-1/4"
28	5100004	1	Overrunning Clutch
29	2300020	1	Shaft 20" x 1-1/4" EI G-36-B
30	1300019	1	Shaft 14" x 1-1/4" D. G-37-B
31	4600170	1	A-Frame
32	4600171	2	Telescoping Pipe Top
33	4600172	2	Telescoping Pipe Bottom
34	4600173	1	Shield Side Input G-33
35	4800072	1	Hitch Ball 2-5/16" x 1-1/4"
36	4600174	1	Gooseneck Frame
37	3600001	1	P.T.O. Complete 540 R.P.M.
38	4600041	1	Shield
39	4800005	2	Pin W/Cotter
40	3600005	1	Tractor 1/2 P.T.O. (Not Shown)
41	3600006	1	Machine 1/2 P.T.O. (Not Shown)

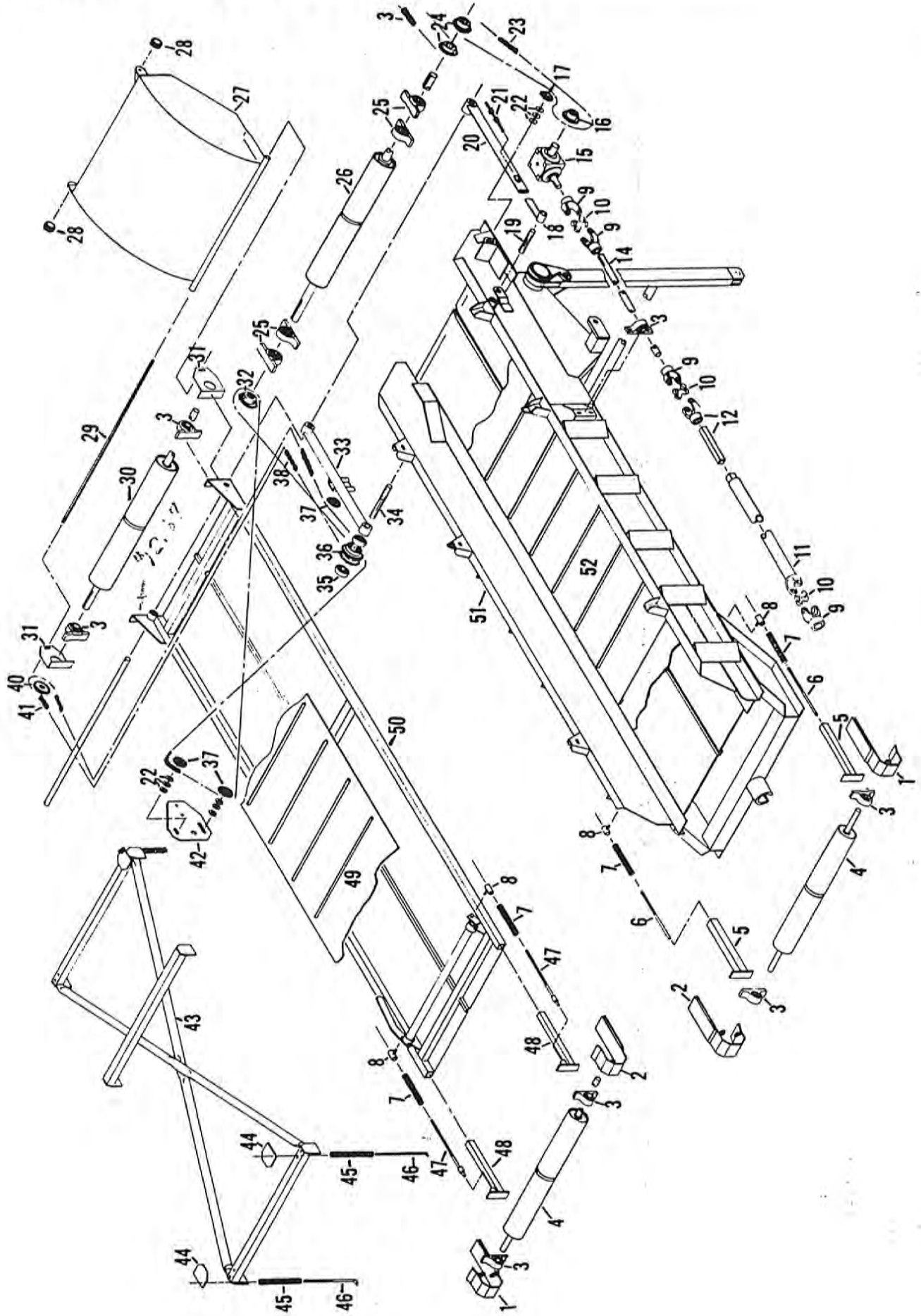
# 10 Pick Up





Ref.	Part No.	Qty.	Description	Ref.	Part No.	Qty.	Description
1	6200001	4	Cotter Key 3/16" x 2"	48	4800022	2	Rollpin 3/8" x 2"
2	2300023	2	Shaft, 5-1/2" x 3/4"	49	1100078	1	Chain 50P, 70L - OL - CL
3	5000005	1	Flat Washer, 3/4"	50	1000006	1	Sprocket 60P, 20T-1 1/4"
4	2800003	4	Brg. Cap	51	1900002	1	Bearing 3 Hole Cast 1 1/4"
5	2000010	2	Roller Brg. (Pickup Wheel)	52	4600105	1	Auger Bracket L. H. PI-12-B
6	2800002	2	Pickup Wheel	53	2300008	1	Shaft 23.5 x 1 1/4" A.C.
7	4600100	1	Frame Pickup Wheel L.H. <i>PI-27-B-22</i>	54	4600086	2	Spring Holder <i>PI-11-B</i>
8	4600074	1	Brace Pickup Shoe L.H. <i>PI-27-B-22</i>	55	6100001	2	Spring
9	4600075	1	Pickup Shoe L.H.	56	4600106	1	Hay Plate <i>PI-33-B</i>
10	6000013	2	Hay Guide Pickup	57	4600110	1	Belting <i>PI-31-B</i>
11	4600092	2	Spacer 1/2" x 1"	58	4600107	1	Main Frame Pickup
12	4600076	1	Pickup Shoe R.H.	59	4600108	1	Auger
13	4600077	1	Brace Pickup Shoe R.H. <i>PI-27-B</i>	59A	4600109	1	Auger Complete
14	4600101	1	Frame Pickup Wheel R.H. <i>PI-27-B</i>	60	2200004	1	Collar 1"
15	2200006	2	Lock Collar 1-1/8"	61	2300024	1	Shaft 5" x 1"
16	2000003	2	Bearing, 1-1/8"	62	6000006	2	Finger - Crank
17	2100004	2	Flangette 3 Hole, 1-1/8"	63	2300014	1	Finger - Shaft
18	4600079	1	Bracket Pickup	64	6000001	8	Finger - Bearing
X-19	6000008	1	Cam <i>PI-27</i>	65	6000002	8	Finger
20	6000010	3	Cam Follower	66	4600083	2	Cover Auger
21	6000009	3	Shaft W/Crank	67	6000004	8	Guide - Inner
22	4900007	3	N.F. Hex Nut, 1/2"	68	6000005	8	Ball, Pivot
23	4600103	2	Spider Plate Only <i>PI-27-B/PI-26-B</i>	69	6000004	8	Guide - Outer
23A	4600104	2	Spider Assembled	70	4600082	1	Auger Bracket R.H. <i>PI-15-B</i>
24	2300013	1	Shaft <i>82.5</i> x 1-1/8" <i>PI-27-B</i>	71	4600090	1	Auger Hinge Hanger <i>PI-20-B BA</i>
25	4600078	3	Pickup Angles, Tooth <i>PI-1-B</i>	72	4600081	1	Timing Hub, Auger Fingers
26	4900002	1	Hex Nut, 3/8" Per Tooth	73	4600089	4	Spacer 1/2" x 3/8" <i>Long - 1/2"</i>
27	5000001	2	Flat Washers, 3/8" Per Tooth	74	4600080	2	Auger Adjustment Bracket
28	6000012	30	Teeth, Pickup	75	4600094	1	Stripper Angle R. H. <i>PI-24</i>
29	4800003	1	Bolt, 3/8" x 1" Per Tooth	76	4600093	1	Stripper Angle L.H. <i>PI-23</i>
X-30	6000011	19	Pickup Bands <i>PI-27</i>	77	4600087	3	Shaft W/O Crank
31	4800012	19	Spacer, 1/2" x 1/2"				
32	4600012	1	Carriage Bolts, 3/8" x 1-1/4"				
33	1000010	1	Sprocket 50P, 27T-1-1/8"				
34	1100077	1	Chain 50P, 74L - OL - CL				
35	1000011	1	Sprocket Idler 50P, 17T-1/2"				
36	2300007	1	Shaft 21.5 x 1 EE <i>PI-29-B</i>				
37	2100002	2	Flangettes, 2 Hole, 1"				
38	2000002	1	Bearing, 1"				
39	1100059	1	Chain 50P, 95L - OL - CL				
40	1000012	1	Sprocket 50P, 30T 1"				
41	2300006	1	Shaft, 21.34 x 1-1/4" AA <i>PI-31-B</i>				
42	2000001	2	Bearing, 1-1/4"				
43	1000014	1	Sprocket 50P, 24T - 1-1/4"				
44	1000013	1	Sprocket 50P, 24T - 1-1/4" Hardened				
45	1000015	1	Sprocket 50P, 30T - 1-3/8", 5/16" K.W.				
46	1900004	1	Bearing, 3 Hole Cast, 1-3/8"				
47	6000014	1	Wood Block Idler				

# 12 Main & Moving Conveyor





# Main & Moving Conveyor 13

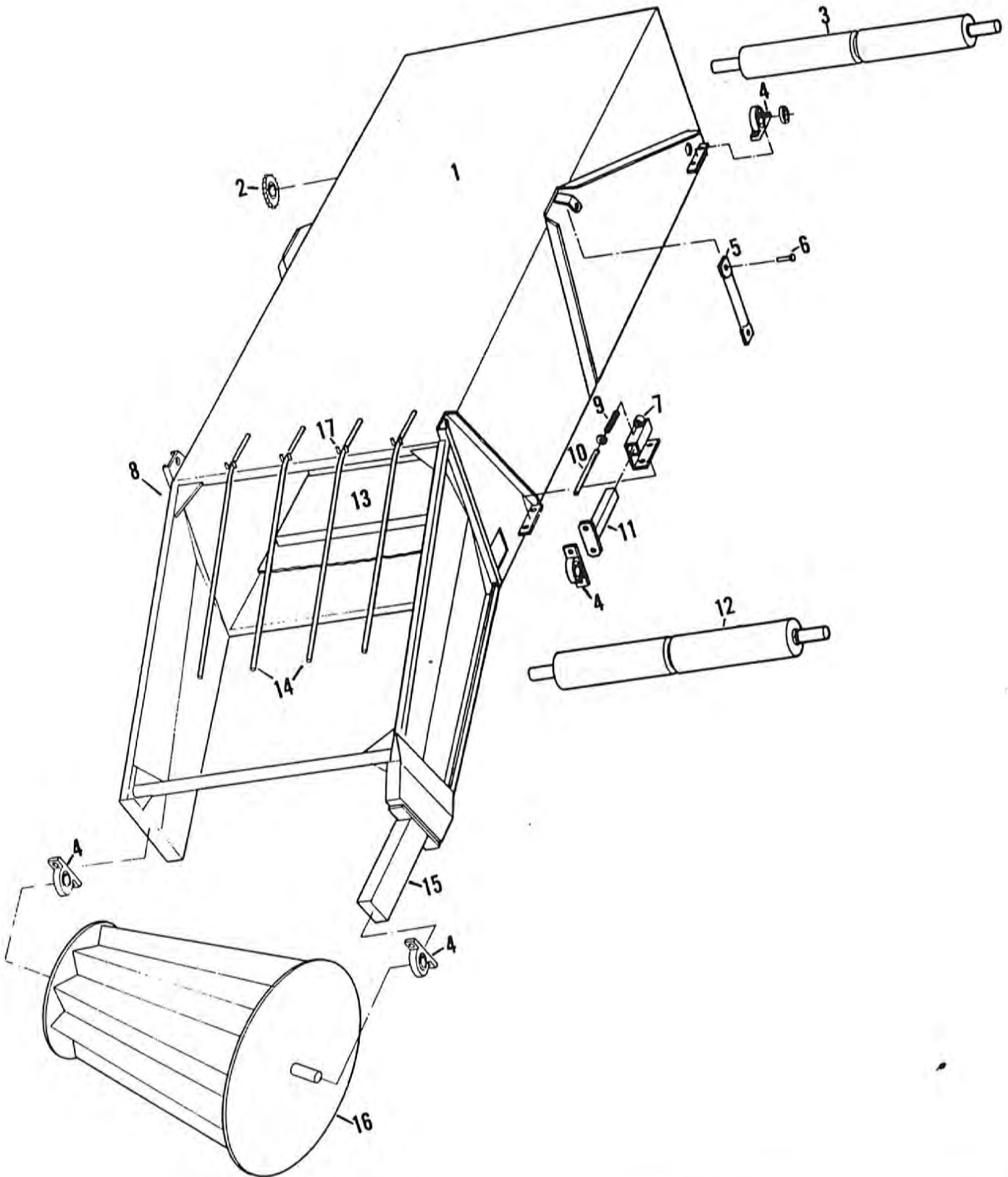
TORQUE Arm MC-1-B

359

Ref.	Part No.	Qty.	Description
1	4600133	2	Roller Shield Bottom <i>MC-22 MC-23 MC-13B</i>
2	4600134	2	Roller Shield Bottom <i>FC-8 F-15-B F-1</i>
3	1800003	7	1" P.B. Bearings
4	4600135	2	Idler Roller <i>FC-19-B</i>
5	4600136	2	Bearing Slides (Main Conveyor) <i>MC-21B MC-22B</i>
6	4600137	2	Tightening Rod <i>MC-18-B</i>
7	6100019	4	Spring
8	4600138	4	Rod Guide <i>MC-24-B</i>
9	3600025	4	Yoke 1" - 6N.
10	3600019	3	Cross & Brg. - 6N.
11	4600139	1	Wobble Shaft
12	4600140	1	Sq. Shaft W/Yoke
13	1100058	1	60 Pitch Chain 33 Links & Cl
14	2300031	1	Shaft 1" x 43"
15	3100121	1	Gear Box
16	1000074	1	60B18-1" Sprkt.
17	1000007	1	Sprocket Idler
18	4600141	1	Conveyor Pivot Anchor
19	2300032	1	L.H. Pivot Shaft 1" x 4"
20	4600142	1	L.H. Pivot Arm Adjustable <i>MC-32-B 33-B 34-B</i>
21	4600143	1	Pivot Adjustment Bolt
22	5000002	1	5/8" Flat Washers
23	1100022	1	60 Pitch Chain 45 Links & Cl.
24	1000018	2	60 B18-1-1/2" Sprkts.
25	1800009	4	1-1/2" P.B. Bearings Malleable Cast
26	4600144	1	Main Conveyor Drive Roller (J) 1-1/2" Shaft
27	4600145	1	Conveyor Hood
28	2000022	20	Nylon Cam Rollers
29	4600146	1	Conveyor Hood Rod
30	4600147	1	Drive Roller Moving Conveyor <i>FC-21-B</i>
31	4600148	2	Driver Roller Brackets <i>FC-3</i>
32	1000030	1	50B-20-1-1/2" Sprkt.
33	4600149	1	R.H. Pivot Arm <i>MC-33-B MC-37-B MC-24</i>
34	2300033	1	R.H Pivot Shaft 1" x 6-1/2" <i>MC-50-B</i>
35	2000005	1	1" Cylindrical Brgs.
36	1000075	1	5B20-20-1" Double Sprkt.
37	1000061	3	Sprocket Idler
38	1100059	1	50 P Chain 95 Links - OL - CL
40	1000058	1	50B20-1" Sprkt.
41	1100060	1	50 P. Chain 103 Links - OL - CL
42	4600150	1	Reversing Sprkt. Plate <i>MC-25</i>
43	4600151	1	X Frame
44	4600152	4	Spring Anchor Plates
45	6100017	4	Springs
46	4600153	4	Spring Rods
47	4600154	2	Tightening Rod <i>FC-14-B FC-16-B</i>
48	4600155	2	Bearing Slides Floating Conveyor <i>FC-12B FC-13B FC-14B</i>
49	1700003	1	36" x 25' 9" Belt Floating Conveyor
50	4600156	1	Frame Floating Conveyor
51	4600157	1	Frame Main Conveyor
52	1700004	1	36" x 25' 3" Belt Main Conveyor



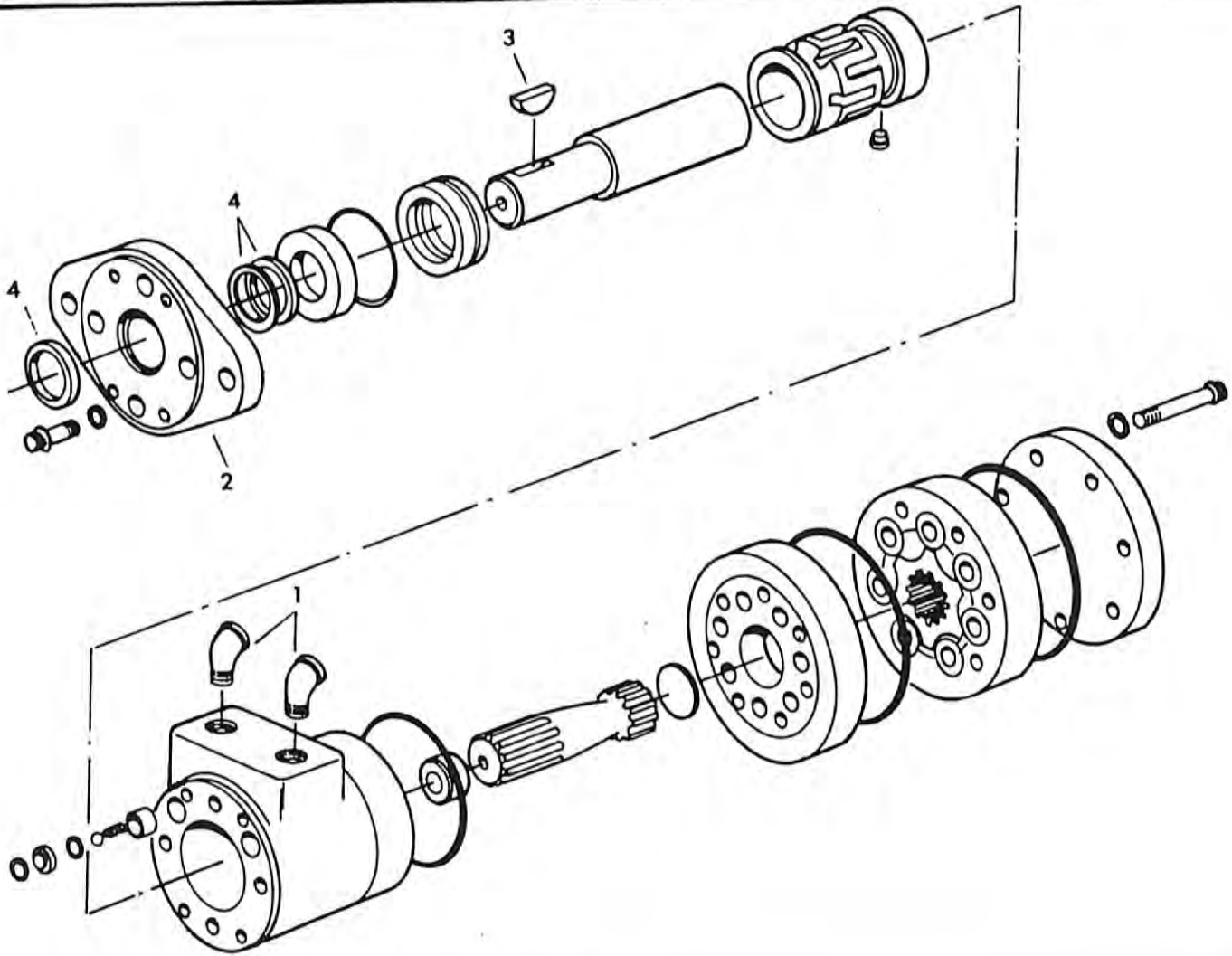
# 14 Packer Conveyor



# Packer Conveyor 15

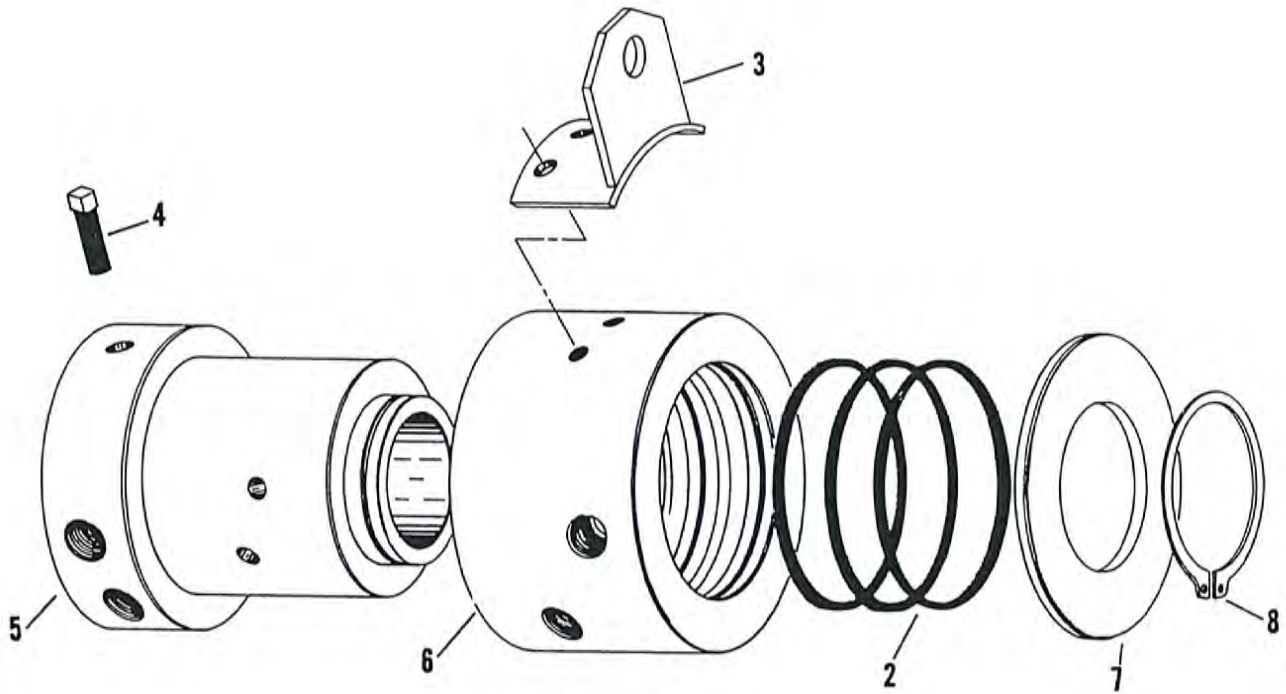
Ref.	Part NO.	Qty.	Description
1	4600158	1	Packer Conveyor Frame
2	1000074	1	Sprocket 60 P 18 T 1" Bore
3	4600147	1	Drive Roller P.C. Conveyor <i>PC-23-B</i>
4	1800003	6	1" P.B. Bearings
5	4600159	2	Lift Arm Link
6	4800045	2	Pins 3/4" x 2-1/2"
7	4600160	1	R.H. Bracket
8	4600161	1	L.H. Bracket (Not Shown)
9	6100019	2	Spring
10	4600137	1	Tightening Rods
11	4600162	2	Bearing Slides
12	4600136	1	Idler Roller <i>PC-29-B</i>
13	1700002	1	Belt 36" x 17' 10" P.C. Conveyor
14	4600049	4	Wind Guards
15	4600163	1	Packer Drum Extension Arm
16	4600164	1	Packer Drum
17	4800014	1	U-Bolt 3/8" x 2"

# 16 Orbit Motor



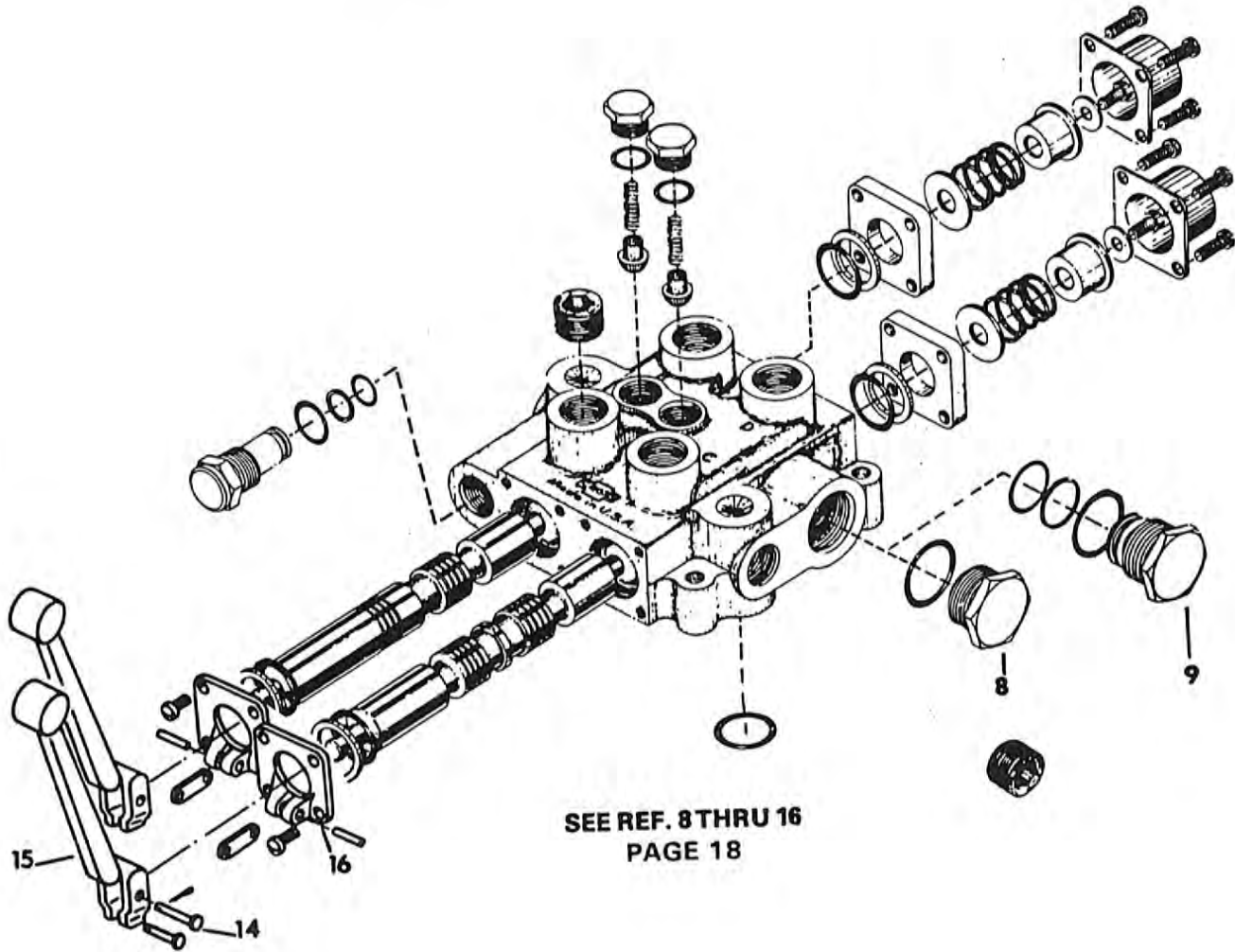
Ref.	Part No.	Qty.	Description
1	3900001	2	1/2" 45° St. Ells
2	3900002	1	Mounting flange
3	6200003	1	Key, woodruff
4	3200002	1	Seal kit, orbit
5	3900003	1	Orbit motor complete, 207
6	3900008	1	Orbit motor complete, 208 (Optional)



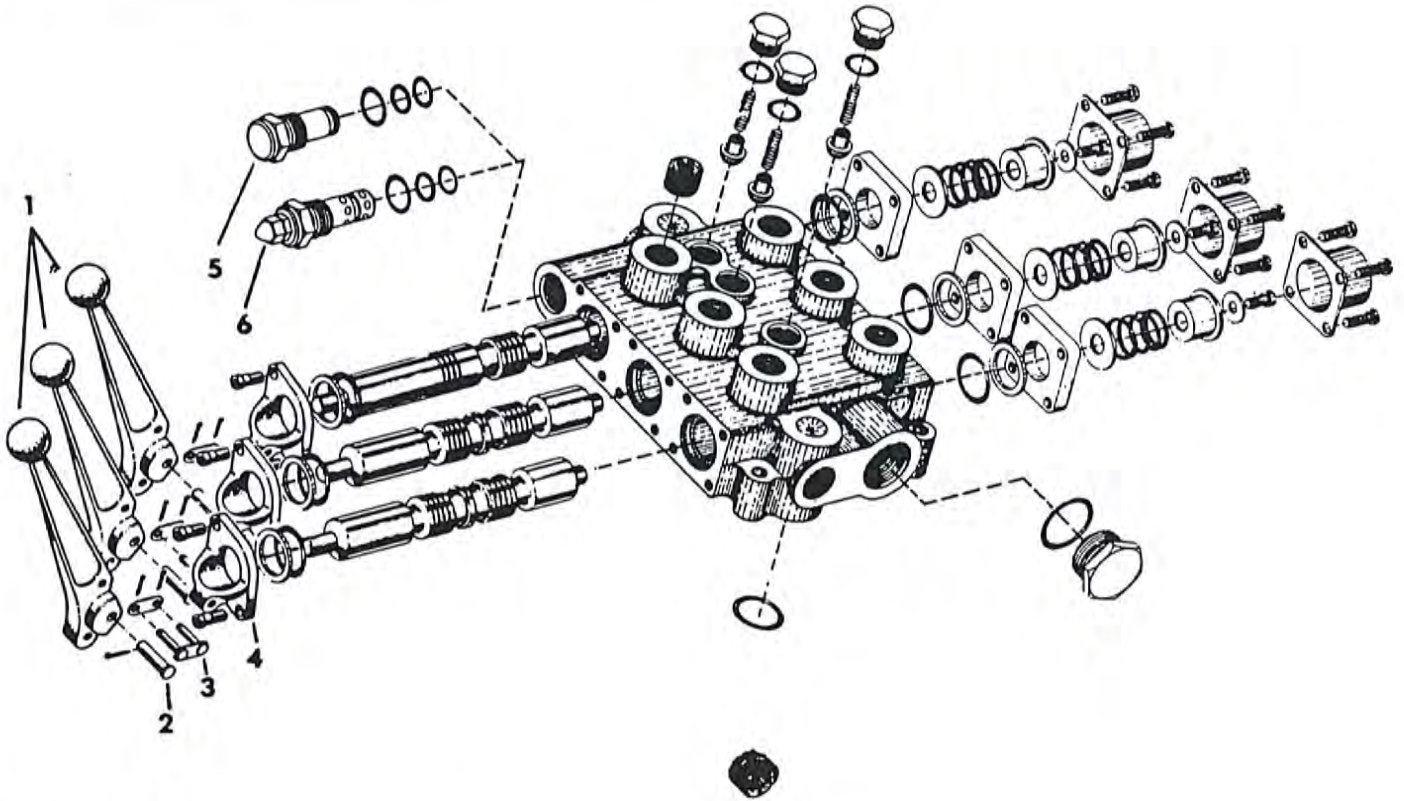


Ref.	Part No.	Qty.	Description
1	4100022	1	Swivel
2	4100026	1	Seal Kit
3	4600098	1	Bracket Center Pin
4	4100035	1	Sq. Head Set Screw, 3/8" x 2"
5		1	Inner Section (N/A Separate)
6		1	Outer Section (N/A Separate)
7	4100036	1	Washer
8	4100037	1	Snap Ring

# 18 Valve Bank



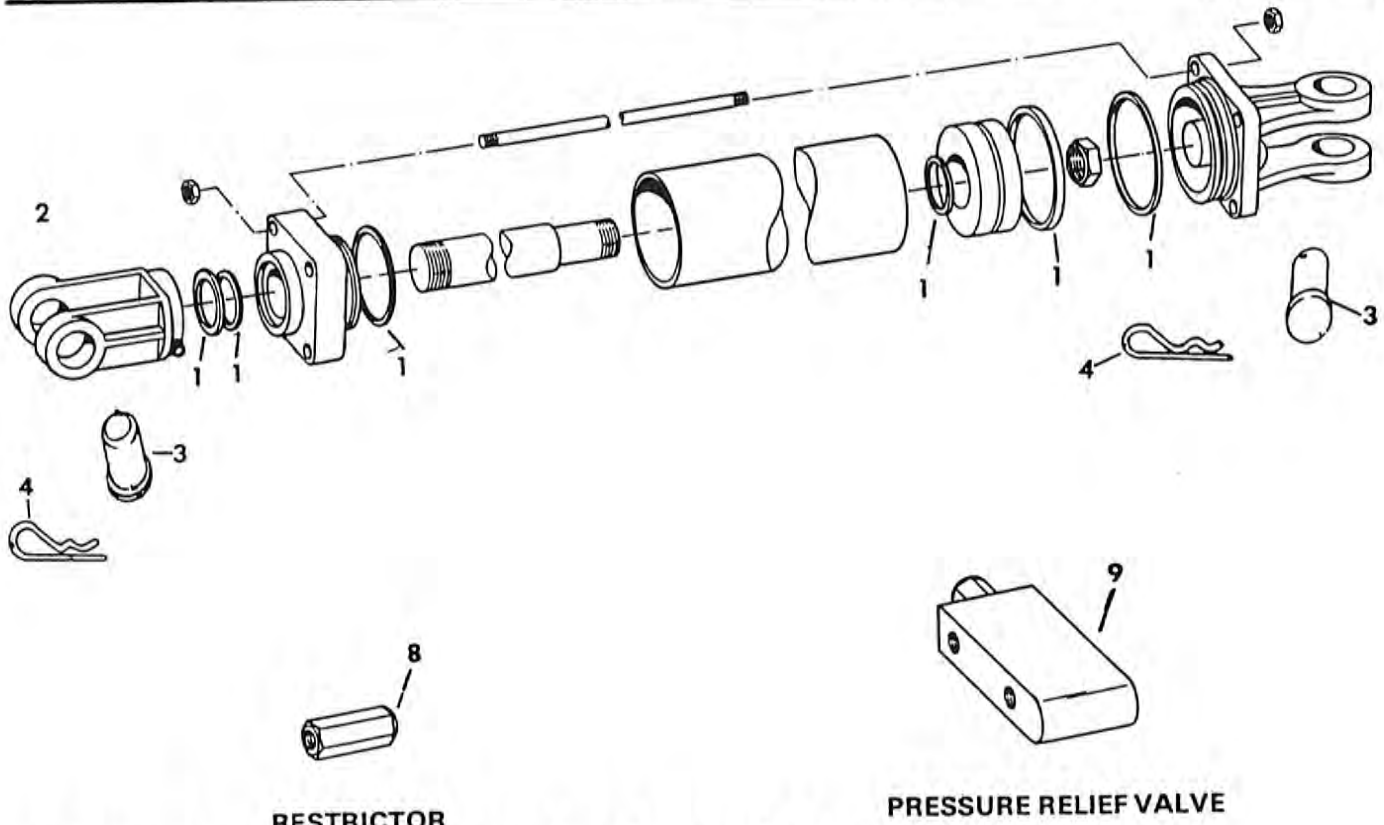
SEE REF. 8 THRU 16  
PAGE 18



Ref.	Part No.	Qty.	Description
1	4000001	3	Valve handles
2	4000002	3	Connector links, handle
3	4000003	3	Pin, handle, w/key
4	4000004	3	Handle bracket
5	4000005	1	Closed center plug
6	4000006	1	Open center plug
7	3200003	1	Seal kit, 3 spool valve bank
8	4000007	1	Open center plug
9	4000008	1	Closed center plug
10	3200004	1	Seal kit, 2 spool valve bank
11	4000009	1	3 spool valve bank, complete
12	4000010	1	2 spool valve bank, complete
13	4000011	1	5 spool valve bank, complete
14	4000013	4	Pin, handle
15	4000014	2	Valve handles
16	4000015	2	Handle bracket



# 20 Hydraulic Cylinders & Hoses



RESTRICTOR

PRESSURE RELIEF VALVE

## Valve Bank to Hydraulic Swivel Hose

1	3700004	1	Hose, 1/2" x 382"
---	---------	---	-------------------

## Hydraulic Swivel to Orbit Motor Hose

1	3700055	2	Hose, 1/2" x 126"
---	---------	---	-------------------

## Valve Bank to Tractor

Ref.	Part No.	Qty.	Description
1	3700001	2	Hose, 1/2" x 72"

## Valve Bank Hoses

1	3700012	1	Hose, 1/2" x 18"
2	3700013	1	Hose, 1/2" x 24"

### Dump Cylinder, Bed

Ref.	Part No.	Qty.	Description
1	4100006	1	Seal Kit
2	4100007	1	Yoke
3	4100008	2	Pin
4	4100009	2	Key
5	4100002		Dump cyl., complete 3 x 12
6	3700048	1	Hose, 1/4" x 332"
7	3700049	1	Hose, 1/4" x 338"

### Pick Up Cylinder

1	4100010	1	Seal Kit
2	4100011	1	Yoke
3	4100012	2	Pin
4	4100013	2	Key
5	4100001	1	Pick up cyl., complete 2 x 8
6	3700011	2	Hose 1/4" x 280

### Swing Cylinder, Tube

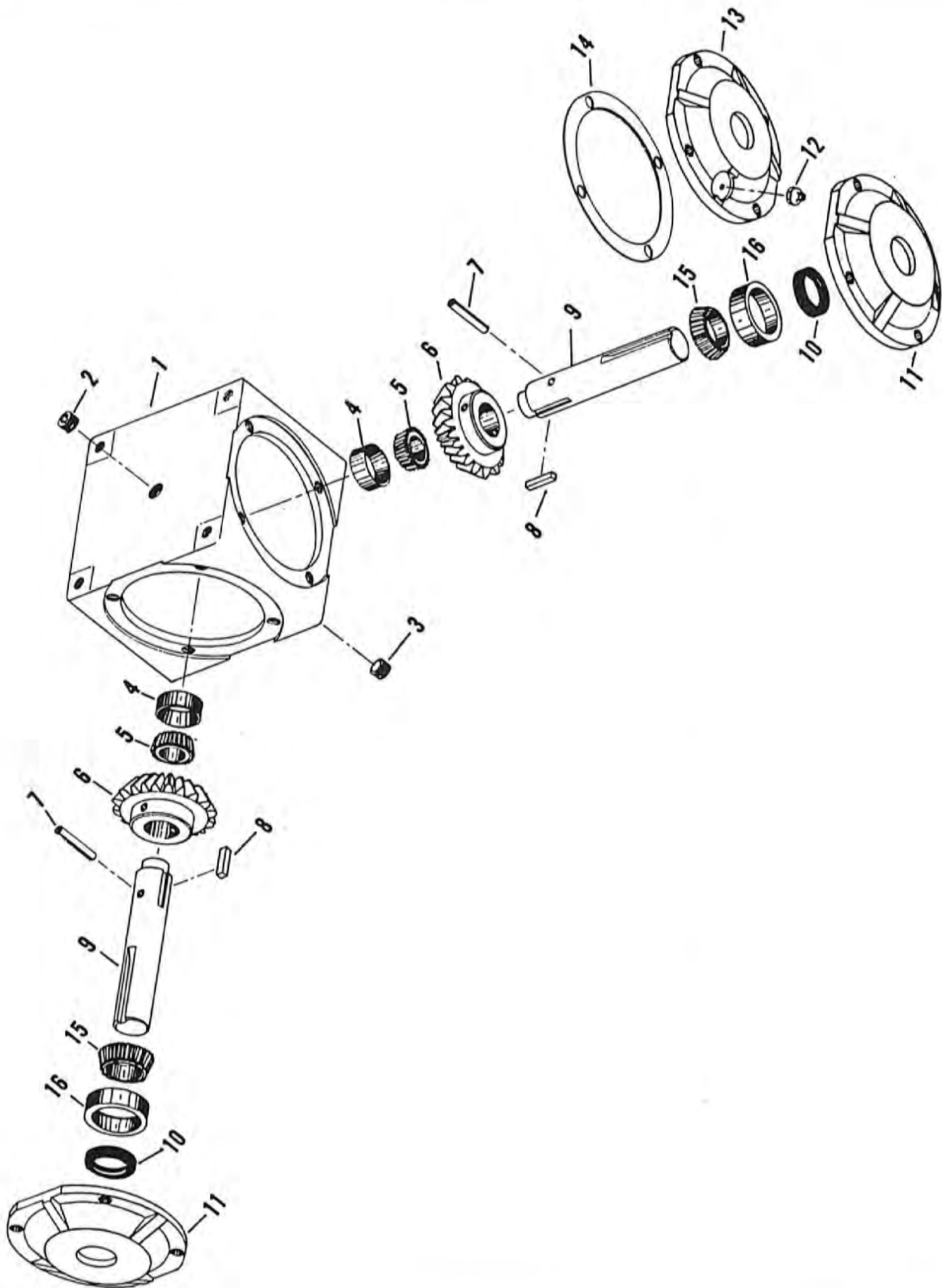
1	4100018	1	Seal Kit
2	4100019	1	Yoke
3	4100020	2	Pin
4	4100021	2	Key
5	4100003	1	Swing cyl., complete 2-1/2 x 8
6	3700046	1	Hose, 1/4" x 333"
7	3700047	1	Hose, 1/4" x 342"
8	4100025	1	Restrictor from Valve Bank

### Lift Cylinders Packer Conveyor

1	4100035	1	Seal Kit
2	4100007	1	Yoke
3	4100008	2	Pin
4	4100009	2	Key
5	4100036	2	Lift Cylinders 3-1/2" x 6"
6	3700048	1	Hose 1/4" x 332"
7	3700049	1	Hose 1/4" x 338"
8	3700050	1	Hose 1/4" x 33"
9	4100024	1	Pressure Relief Valve
10	3700051	1	Hose 1/4" x 29"
11	3700052	1	Hose 1/4" x 36"
12	3700053	1	Hose 1/4" x 42"

All other cylinder parts not serviceable.

# 22 Gear Box 211A & 211AA Conveyor Drive

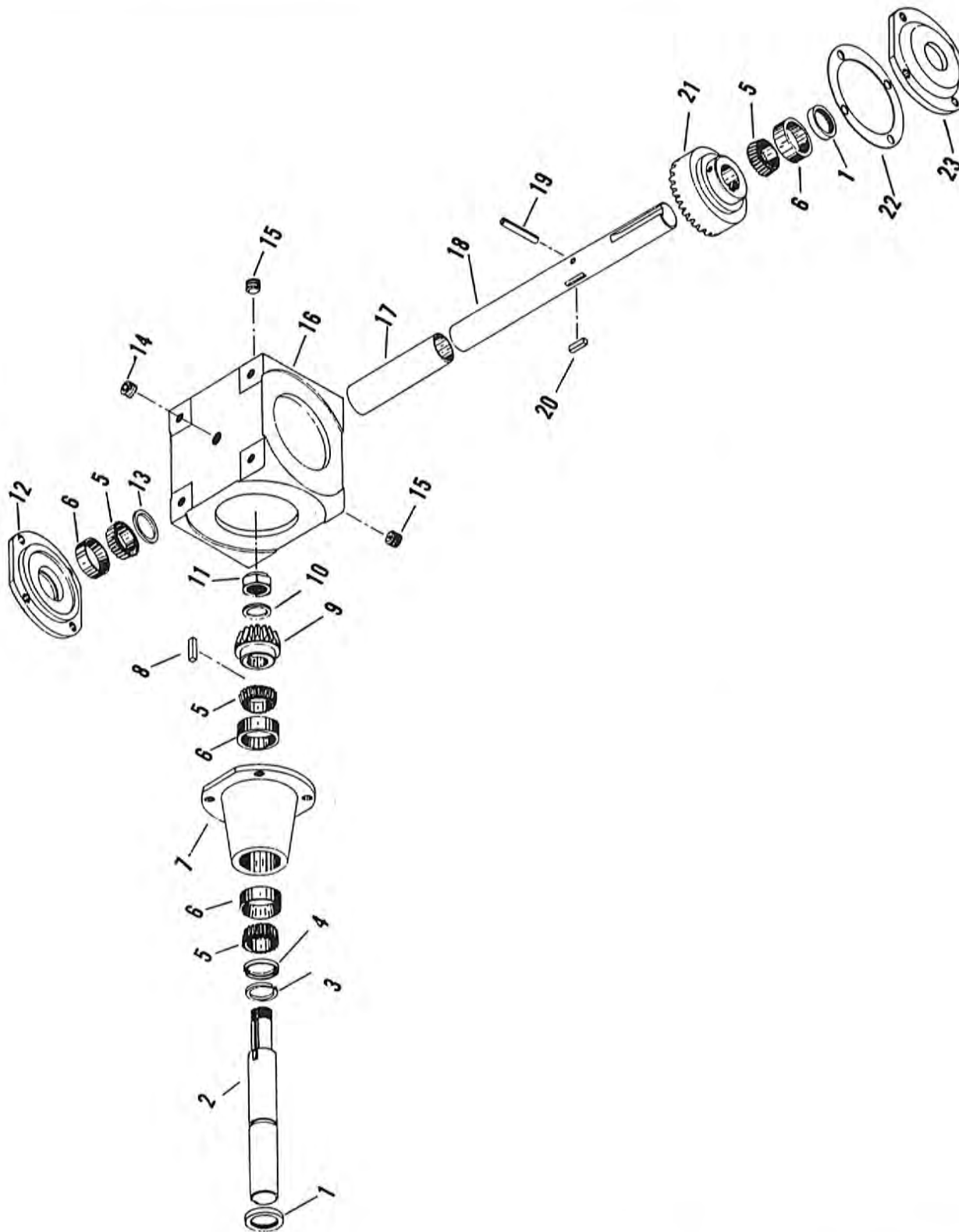




# Gear Box 211A & 211AA Conveyor Drive 23

Ref.	Part No.	Qty.	Description
1	3100105	1	Case
2	3100106	1	Pipe Plug - Vented
3	3100107	1	Pipe Plug
4	3100108	2	Brg. Cup
5	3100109	2	Brg. Cone
6	3100110	2	Gear
7	3100111	2	Roll Pin
8	3100112	2	Sq. Key
9	3100113	2	Shaft
10	3100114	2	Seal
11	3100115	1	Cup
12	3100116	1	Zerk
13	3100117	1	Cap W/Zerk
14	3100118	1	Gasket Var., .002, .003, .005, .015
15	3100119	1	Brg. Cone
16	3100120	1	Brg. Cup
17	3100121	1	Gear Box W/O Zerk
18	3100122	1	Gear Box W/Zerk

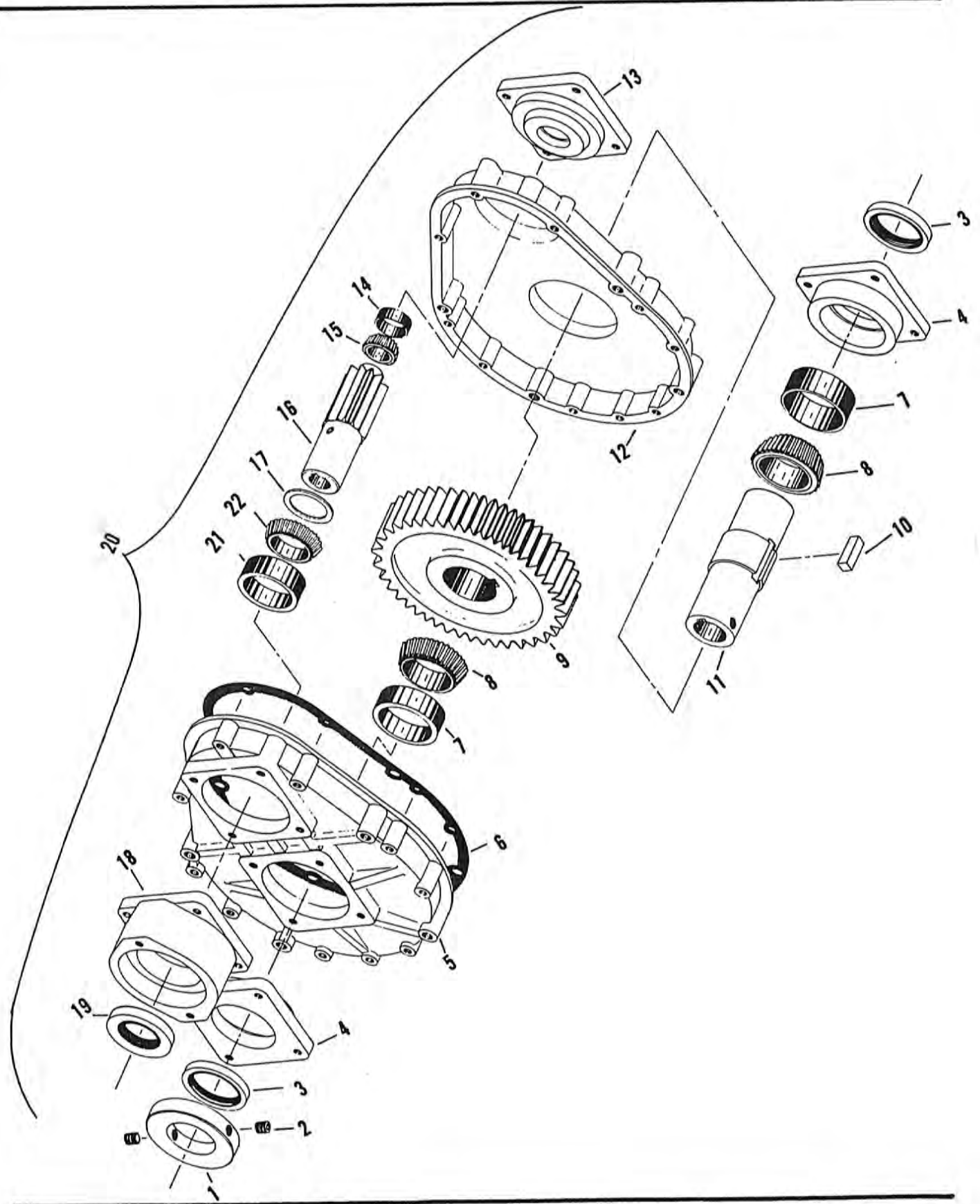
# 24 214 2:1 Gear Box



Ref.	Part No.	Qty.	Description
1	3100063	1	Seal
2	3100064	1	Shaft (Input)
3	3100065	1	Retaining Ring
4	3100066	1	Collar
5	3100067	1	Brg. Cone
6	3100068	1	Brg. Cup
7	3100069	1	Cap (Input)
8	3100070	1	Key
9	3100071	1	Gear (Input)
10	3100072	1	Retaining Rings
11	3100073	1	Lock Nut
12	3100074	1	Cap (End)
13	3100075	1	Washer
14	3100076	1	Plug (Vented)
15	3100077	1	Plug (Solid)
16	3100078	1	Housing
17	3100079	1	Spacer
18	3100080	1	Shaft (Out Put)
19	3100081	1	Roll Pin
20	3100082	1	Key
21	3100083	1	Gear (Out Put)
22	3100084	1	Gasket Var., .015, .005, .003, .002
23	3100085	1	Cap (Out Put)



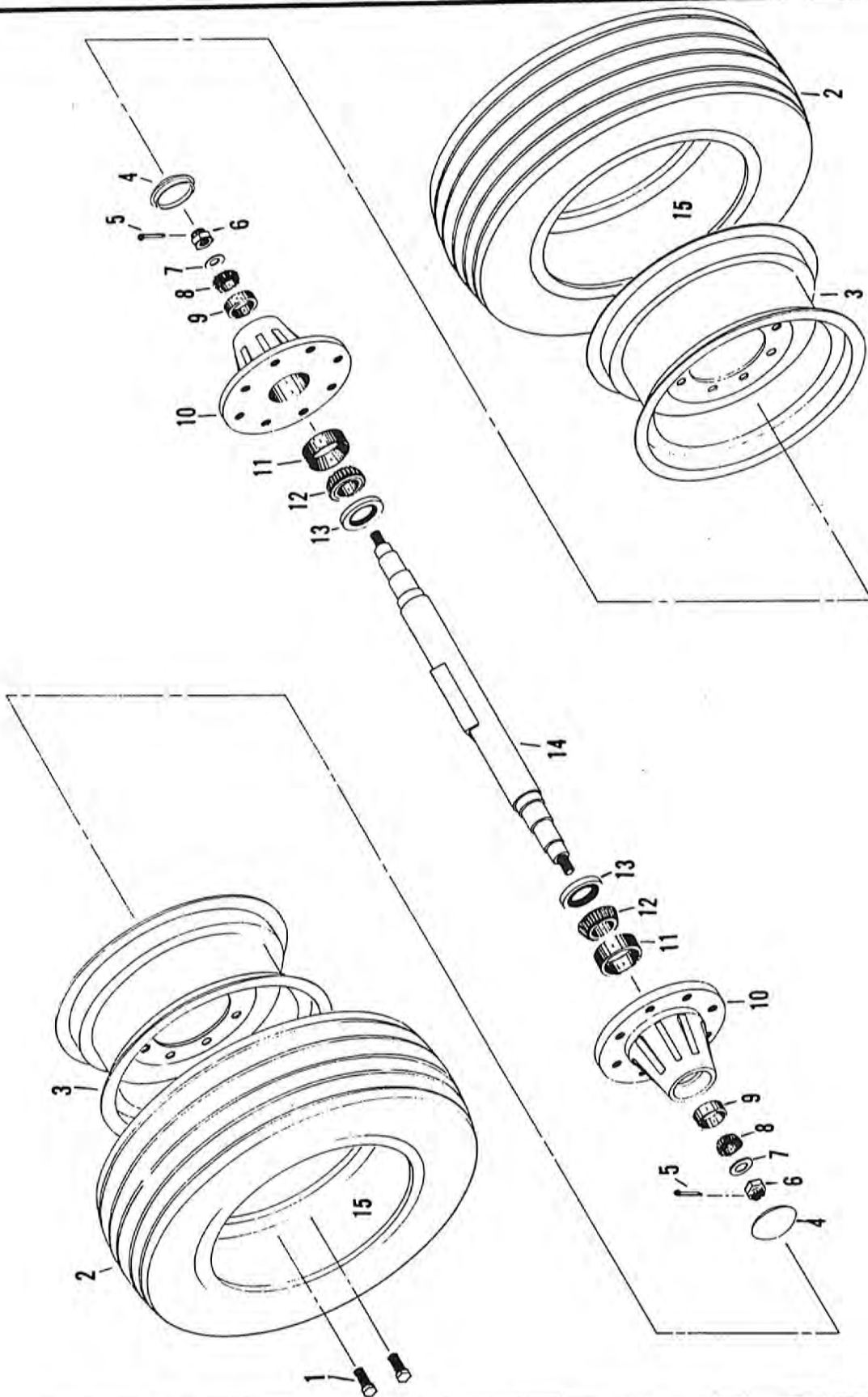
# 26 Push Off Gear Box GR 52



# Push Off Gear Box GR 52 27

Ref.	Part No.	Qty.	Description
1	3100086	1	Collar
2	3100087	2	Set Screw
3	3100088	2	Out Put Seal
4	3100089	2	Open End Plate (Out Put)
5	3100090	1	L.H. Half Case
6	3100091	1	Gasket
7	3100092	2	Brg. Cup
8	3100093	2	Brg. Cone
9	3100094	1	Out Put Gear
10	3100095	1	Sq. Key
11	3100096	1	Out Put Hub
12	3100097	1	R.H. Half Case
13	3100098	1	Closed End Plate (Input)
14	3100099	1	Brg. Cup
15	3100100	1	Brg. Cone
16	3100101	1	Input Connector Shaft & Gear
17	3100102	1	Spacer (Input)
18	3100103	1	Flange (Input)
19	3100104	1	Seal (Input)
20	3100062	1	Gear Box Complete
21	3100123	1	Brg. Cup
22	3100124	1	Brg. Cone

# 28 Tires & Wheels





Ref.	Part No.	Qty.	Description
1	2800008	1	Wheel Bolt
2	2600006	1	Tire 11L-16
3	2800007	1	Wheel 16
4	2900020	1	Hub Cap
5	2900021	1	Cotter Pin
6	2900022	1	Nut
7	2900023	1	Washer
8	2900024	1	Outer Cone
9	2900025	1	Outer Cup
10	2900026	1	Hub Complete, Seals, Bearings, Cap, Bushings
11	2900028	1	Inner Cup
12	2900029	1	Inner Cone
13	2900030	1	Seal
14	3000013	1	Axle
15	2700004	1	Tube 11L-16



(C)

(C)

(C)

All Haybuster Stackers are shipped with open center plugs installed. Check your tractor model below to make sure it is with open center plugs. If not equipped with such, order closed center plugs before operating.

Tractor Mfg. and Model	Open or Closed Center	Tractor Mfg. and Model	Open or Closed Center	Tractor Mfg. and Model	Open or Closed Center
Allis Chalmers		John Deere		Massey Ferguson	
160	open	4000	closed	MF130D	open
170G	open	4020	closed	MF135G	closed
170D	open	4230	closed	MF135D	closed
175 Crop Hunter	open	4320	closed	MF165G	closed
180G	open	4430	closed	MF175G	closed
180D	open	4620	closed	MF175D	closed
185 Crop Hunter	open	4630	closed	MF180G	closed
190D	open	5020	closed	MF180D	closed
190 GXT	open	6030	closed	MF1080D	closed
190 DXT	open			1085	closed
210	open	Deutz		MF1100D	closed
220	open	D3006	open	1105	closed
		D4006	open	MF1130D	closed
David Brown		4506	open	1135	closed
700	open	D5506	open	MF1150D	closed
705	open	D6006	open	1155	closed
885	open	D8006	open	Minneapolis-Moline	
880	open	D9006	open	Jet Star Three	open
990	open	D10006	open	U302	open
995	open	D13006	open	M670 Super	open
1200	open			G-350	open
1210	open	Ford		G-450	open
1212	open	1000	open	G-550	open
3800	open	2000	open	G-750	open
4600	open	3000	open	G-850	closed
		4000	open	G-940	closed
J.I. Case		4000SU	open	G-950	closed
470	open	5000	open	G-1050	closed
570	open	7000	open	G-1350	closed
770	open	8000	open	Oliver	
870	open	9000	open	550	open
970	open			1255	open
1070	open	International Harvester		1265	open
1090	open	140	open	1355	open
1170	open	354	open	1365	open
1175	open	454	open	1555	open
1270	open	F-544	open	1655	open
1370	open	I-544	open	1755	closed
		574	open	1855	closed
John Deere		F-656	open	1955	closed
820	open	I-656	open	2050-2150	open
1020RU	closed	664	open	2155	closed
1020HU	closed	666	open	Steiger	
1020LU	closed	766	open	ST 200	open
1520	closed	966	open	ST 225	open
2030	closed	1066	open	ST 300	open
2520	closed	1466-1463	open	ST 320	open
3020	closed				







