

**2575 Folding
No-Till Drill
Operator's Manual
and Parts Book**

WARRANTY

Haybuster Mfg. Inc., warrants to the original purchaser for one year from purchase date that this product will be free from defects in material and workmanship when used as intended and under normal maintenance and operating conditions. This warranty is limited to the replacement of any defective part or parts returned to our factory in Jamestown, N.D., within thirty (30) days of failure.

This warranty shall become void if in Haybuster Mfg. Inc.'s., judgment the machine has been subject to misuse, negligence, alterations, damaged by accident or lack of required normal maintenance, or if the product has been used for a purpose for which it was not designed.

All claims for warranty must be made through the dealer which originally sold the product and all warranty adjustments must be made through same.

This warranty does not apply to tires or bearings or any other trade accessories not manufactured by Haybuster Mfg. Inc. Buyer must rely solely on the existing warranty, if any, of these respective manufacturers.

Haybuster Mfg. Inc., shall **not** be held liable for damages of any kind, direct, contingent, or consequential to property under this warranty. Haybuster Mfg. Inc., cannot be held liable for any damages resulting from causes beyond its control. Haybuster Mfg. Inc., shall **not** be held liable under this warranty for loss of crops, or rental costs or any expense or loss for labor or supplies.

Haybuster Mfg. Inc., reserves the right to make changes in materials and/or designs of this product at any time without notice.

This warranty is void if Haybuster Mfg. Inc., does not receive a valid warranty registration card at its office in Jamestown, N.D., within 10 days from date of original purchase.

All other warranties made with respect to this product, either expressed or implied, are hereby disclaimed by Haybuster Mfg. Inc.

TABLE OF CONTENTS 1

Safety Instructions	3-4
Introduction	5
Specifications	6
Lubrication	7-10
Connecting To Tractor	11-13
Adjusting Depth And Down Pressure	14-15
Drawlink Adjustment	16
Seed Hopper.....	17-20
Setting And Checking The Feed Rate	21-23
Fertilizer Option Calibration	24
Preparing To Transport	25-27
Cart Main Frame.....	30-31
Axles And Wheels.....	33
Primary Hydraulics.....	34-35
Secondary Hydraulics	36-37
Linkages.....	38-39
Wing Mainframe.....	40-41
Drive Wheel	42-43
Tank	44-47
Tank End Drive	48-49
Seed Cup.....	51
Run	52-53
Coulter And Disk.....	54-55
Fertilizer Option	56-57
Fertilizer Setting Assembly	58-59
Marker Option	60-61
Harrow Option.....	62-63
Legume Box Option	64-65
Seed Index Assembly Legume Box.....	66
Cup Assembly Legume Box	67
Decals	68-69
Press Wheel Options.....	70-71



The safety of the operator is of great importance to those at Haybuster Manufacturing Company. We have provided decals, shields and other safety features for your protection. In addition, we ask you to be a careful operator who will properly use and service your Haybuster equipment.

BEFORE ATTEMPTING TO OPERATE THIS MACHINE, CAREFULLY READ ALL INSTRUCTIONS CONTAINED IN THIS MANUAL.

BEFORE OPERATING

1. Be sure all safety shields and covers are securely in place when machine is running.
2. Read all warning and instructional decals placed on the machine for your safety and convenience.
3. Allow only responsible, properly instructed individuals to operate machine. Carefully supervise inexperienced operators.
4. Make no modifications to this equipment unless specifically requested or recommended by Haybuster Manufacturing Company.
5. Tighten any loose bolts or replace any cracked bolts, chains, hoses, or connections.
6. The towing vehicle must be of equal or greater weight than the grain drill for adequate control and braking capacity.

DURING OPERATION

1. Exercise extreme caution when operating or transporting the drill on steep slopes or grades.
2. Be sure all spectators are clear of the area where the drill is in operation or raised and lowered.
3. Be sure the tractor operator is the only person riding the tractor. Allow no one to ride the drill at any time.
4. Remember, loose clothing, necklaces and similar items are more easily caught in moving parts. Avoid the use of these items if possible and keep long hair confined.

5. Never work under the drill when the drill is lifted up unless the safety stops are installed on all four cylinders.
6. Seed treatments and other agricultural chemicals can cause eye, skin, or respiratory problems. Wear face mask, goggles, and gloves. Read and follow safety instructions on the chemical suppliers label.
7. On drills equipped with markers, stay clear of markers when raising and lowering. Markers move rapidly and with powerful force. Make sure any observers are in the clear before performing any operation in which the markers will fold or unfold.
8. Watch out for and avoid any object or condition that may interfere with the proper operation of the machine.

DURING SERVICE & MAINTENANCE

1. Before working on or near the implement for any reason including servicing, lubrication, cleaning, inspecting, or filling:
 - A. Shut off tractor engine.
 - B. Set parking brake.
 - C. Remove key from ignition.
 - D. Install safety stops on all cylinders before working under the implement.
2. When disconnecting the folding drill from the tractor:

When folded:

- A. Place jackstand in jack mount tube closest to tractor and pin in position so jack is vertical.
- B. Raise jack until load is removed from drawbar.
- C. Depressurize and disconnect hydraulic hoses from the tractor.

4 SAFETY INSTRUCTIONS

D. Remove hitch pin.

When unfolded:

- A: Lower the drill to the ground until the drill hitch is no longer lifting up on the drawbar. **FAILURE TO LOWER THE DRILL TO THE GROUND WILL RESULT IN THE HITCH WHIPPING UPWARDS SUDDENLY ONCE THE HITCH PIN IS REMOVED!**
- B. Relieve all hydraulic pressure from hoses before separating the hydraulic hoses.
3. When replacing any part on your drill, be sure to use only Haybuster authorized parts.
4. Relieve all pressure in the hydraulic system before disconnecting the lines or performing other work on the system. Make sure all connections are tight and the hoses and lines are in good condition before applying pressure to the system.
5. Hydraulic fluid escaping under pressure can be invisible and have enough force to penetrate the skin. When searching for a suspected leak, use a piece of wood or cardboard rather than your hands. If injured, seek medical attention immediately to prevent serious infection or allergic reaction.
6. Be careful using a hoist or other lifting devices. Use only devices that have adequate lifting capacity and be sure the chain or cable is securely attached.

WHEN TRANSPORTING ON PUBLIC ROADS:

1. Use good judgment and drive carefully, especially over rough or uneven roads and trails.
2. Be sure tractor brakes are properly adjusted and foot pedals locked together.
3. Check your state and local laws regarding the use of lights, slow moving vehicle emblems, and other possible requirements. Always use safety chains!

4. Do not tow drill at speeds exceeding 20 MPH. If there is seed or fertilizer in the drill box – **DO NOT EXCEED 10 MPH!**

FAILURE TO COMPLY WITH ANY OF THE ABOVE SAFETY INSTRUCTIONS OR THOSE THAT FOLLOW WITHIN THIS MANUAL MAY RESULT IN SEVERE INJURY OR DEATH!

THIS DRILL IS NOT TO BE USED FOR ANY PURPOSE OTHER THAN THAT FOR WHICH IT IS INTENDED AS EXPLAINED IN THIS OPERATOR'S MANUAL AND OTHER PERTINENT WRITTEN MATERIAL PREPARED BY HAYBUSTER MFG. INC.

SAFETY DECALS

Safety decals located on your machine contain important and useful information that will help you operate your equipment safely. Each of these safety decals and all other decals are shown on page 32.

To assure that all decals remain in place and remain in good condition, follow the instructions given below:

1. Keep decals clean. Use soap and water to clean the decals. Do not use mineral spirits, adhesive cleaners or other similar cleaners.
2. Replace any damaged or missing decals. When attaching decals, surface temperature of the metal must be at least 40 degrees Fahrenheit. The metal must be clean and dry.
3. When replacing a machine component to which a decal is attached, be sure to also replace the decal.
4. Replacement decals can be purchased from your Haybuster dealer.

INTRODUCTION TO THE 2575 FOLDING NO-TILL DRILL

Every effort has been made to ensure that the information contained in this manual is correct at the date of publication; but, due to continuous improvements, Haybuster Manufacturing Company reserves the right to make changes in the contents without notice or obligation.

This manual is shipped with each machine to familiarize the operator with the proper operating, maintenance and lubrication instructions to insure the best possible performance and service from the machine. Study and understand these instructions thoroughly before operating the machine. We recommend that this manual be readily available for reference at all times. Consult your Haybuster dealer if any items in this manual are not understood.

Haybuster Manufacturing Company reserves the right to make changes in engineering, design and specifications, add improvements, or discontinue manufacture at any time without notice or obligation.

ORDERING PARTS

When ordering parts always specify your model number, serial number, and the number of the parts you wish to order.

IMPORTANT: WHEN REPLACEMENT PARTS ARE NEEDED, USE THE LISTED PARTS NUMBERS AND DESCRIPTIONS TO INSURE FAST AND ACCURATE SHIPMENT OF YOUR ORDER. WHEN ORDERING PARTS ALWAYS SPECIFY UNIT SERIAL NUMBER.

ONLY AUTHORIZED PARTS SHOULD BE USED FOR REPAIR AND/OR REPLACEMENT.

SERIAL NUMBER DECAL

The serial number decal is located on the left hand side of the hitch near the hitch lift cylinder. The model number and serial number can be found on this decal. The model number and serial number are important when service and/or parts are required.

ABOUT YOUR 2575 FOLDING DRILL

The 2575 grain drill is designed to seed into No-Till conditions. It will also seed in minimum tillage and conventionally tilled fields. The drill will sow a 25 foot swath with the rows spaced a 7-1/2 inches. A minimum of 140 HP is required to pull the drill in the field. The tractor should weigh a minimum of 18,000 lbs. to safely transport the drill on the highway. Always use a safety chain.

Row unit down pressure can be easily adjusted from 150-325 lbs. Several types of press wheels are available to suit variable conditions. Press wheels are quick and easy to set with spring loaded knob on all row units. All row unit pivot points feature replaceable, hardened steel bushings. The heavy duty parallel linkages are of ductile cast iron. The offset double disc openers feature heavy duty bearings with a double internal seal.

The standard hopper features a large, 3 bushel per foot capacity and fluted seed metering cups. The fertilizer option features a stainless steel trough which bolts into the standard tank and dividers will split the tank into 1.8 bushels per foot for seed and 105 lbs. per foot of fertilizer.

An optional two bar, spring tooth harrow will fold up behind the drill boxes to maintain the narrow transport width. A small seed attachment, acre counter, and hydraulic sequencing markers are available options.

6 SPECIFICATIONS

2575 FOLDING NO-TILL DRILL SPECIFICATIONS

Seeding width.....	25 ft.
Row spacing.....	7.5 inches
Weight	14,300 lbs.
Tongue weight in transport.....	2,900 lbs.
Field length.....	26-1/2 ft.
Field height.....	70 inches
Transport width.....	15-3/4 ft.
Transport height	9-1/4 ft.
Transport length	23-1/2 ft.
Transport tire outside width.....	8 ft.
Seed capacity	
Seed only	3 bu./ft.
Fertilizer.....	105 lbs./ft.
Seed w/fert. option	1.8 bu./ft.
Cart tires.....	21.5L x 16.1 10-ply rib implement
Wing tire	12.5L x 15 10-ply rib implement
Minimum of 2 sets of tractor hydraulics required.	
Minimum tractor size	140 HP

STANDARD EQUIPMENT:

- Fluted feed – seed metering cup
- 14" offset double dis opener with heavy duty bearings.
- Carbide edged, spring loaded scrapers
- Ductile cast iron parallel linkages
 - Hardened steel bushings in linkage pivot points
- Quik-set down pressure spring and packer wheel adjustments
- Spring loaded, 2" x 13" rubber tired packer wheel
- Single point hydraulic depth adjustment
- Includes all hydraulic cylinders and hoses

OPTIONAL EQUIPMENT:

- Heavy duty markers
- Spring tine harrow
- Acre counter
- Stainless steel fertilizer metering kit
- Legume box

PRESS WHEEL OPTIONS:

- 2" x 13" Centered (standard)
 - 1" x 12" Dual-Vee
 - 2" x 13" Angle offset
 - 2" x 15" Steel
-

Prior to using the 2575 folding drill, the operator should lubricate all fittings listed on the following chart to become familiar with their location and the correct service schedule. Use a high quality, multi-purpose grease when lubricating the unit. Make sure all fittings and the nozzle of the grease applicator are clean before applying the grease. If any grease fittings are missing, replace them immediately. (See drawings on pages 10-12.)

Lubricating of all pillow block and flange-type bearings should be done slowly to help prevent bearing seal damage. Use caution when using a high pressure, high volume gun.

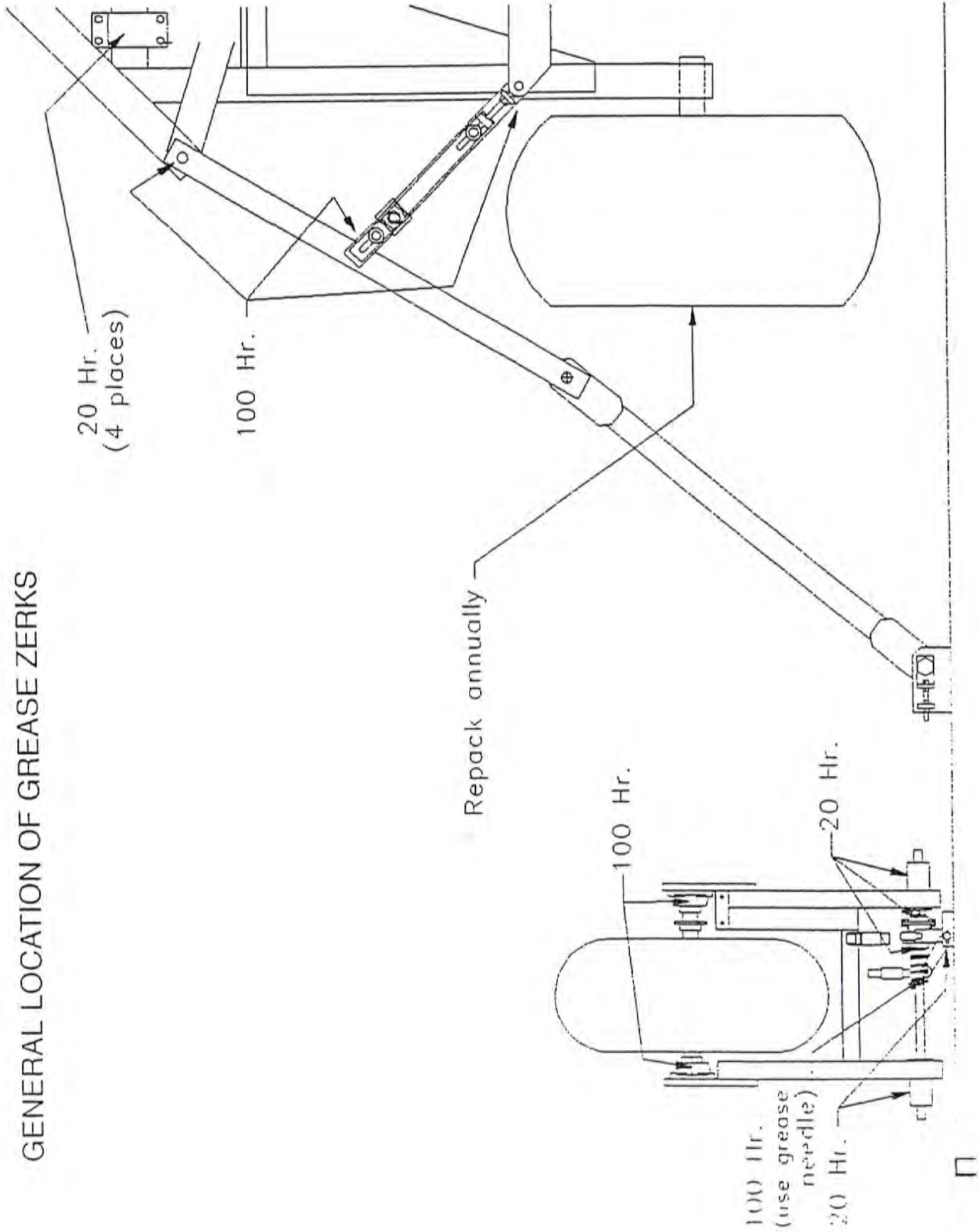
Description	Type	Frequency	Zerks
Drive wheel assembly			
Pivot hinge	grease	20	4
Clutch	grease	20	4
Lower cylinder pivot	grease	20	2
Wing cylinder link pivot	grease	20	2
Drive wheel bearing	grease	100	4
Clutch fork pivot	grease	20	2
Drawlinks	grease	100	6
Wheel frame on cart			
Hinge points	grease	20	4
Lower cylinder pivot	grease	20	2
Lower safety stop pivot	grease	20	2
Folding cylinder link	grease	100	2
Hitch pivot	grease	100	1
Lower hitch cylinder pivot	grease	100	1
Tank calibration cam roller (use grease needle)	grease	100	2
Clutch fork cam roller (use grease needle)	grease	100	2
Roller chains	oil daily in dusty conditions		
Seed up drive sleeve	grease	100 hr.	
Cart wheel bearings	grease	Repack annually	

Packer wheel bearings and coulter-disc bearings are non-relubable.

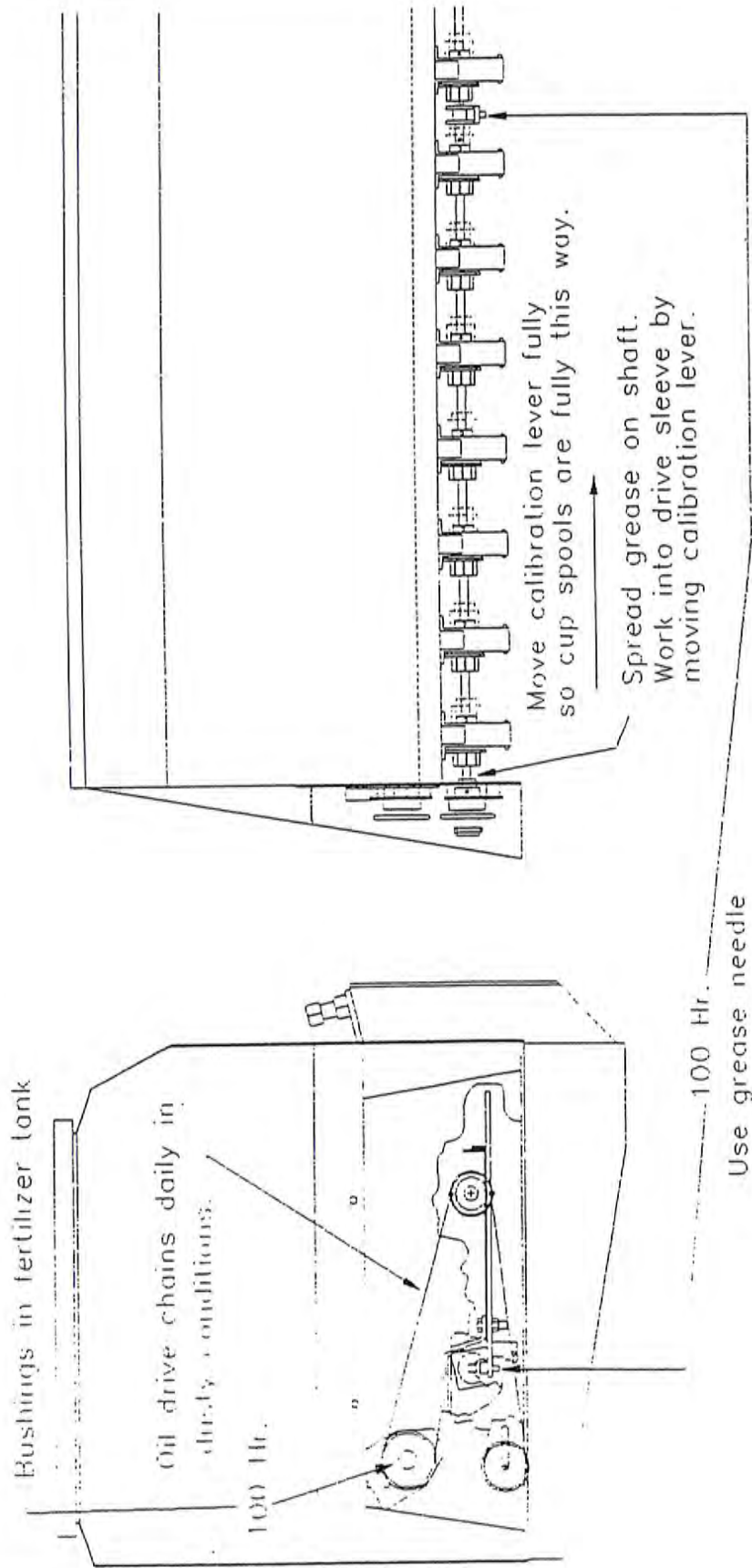
Marker			
Hinge points	grease	20 hr.	6
Disc hub	grease	Repack annually	

8 LUBRICATION

GENERAL LOCATION OF GREASE ZERKS

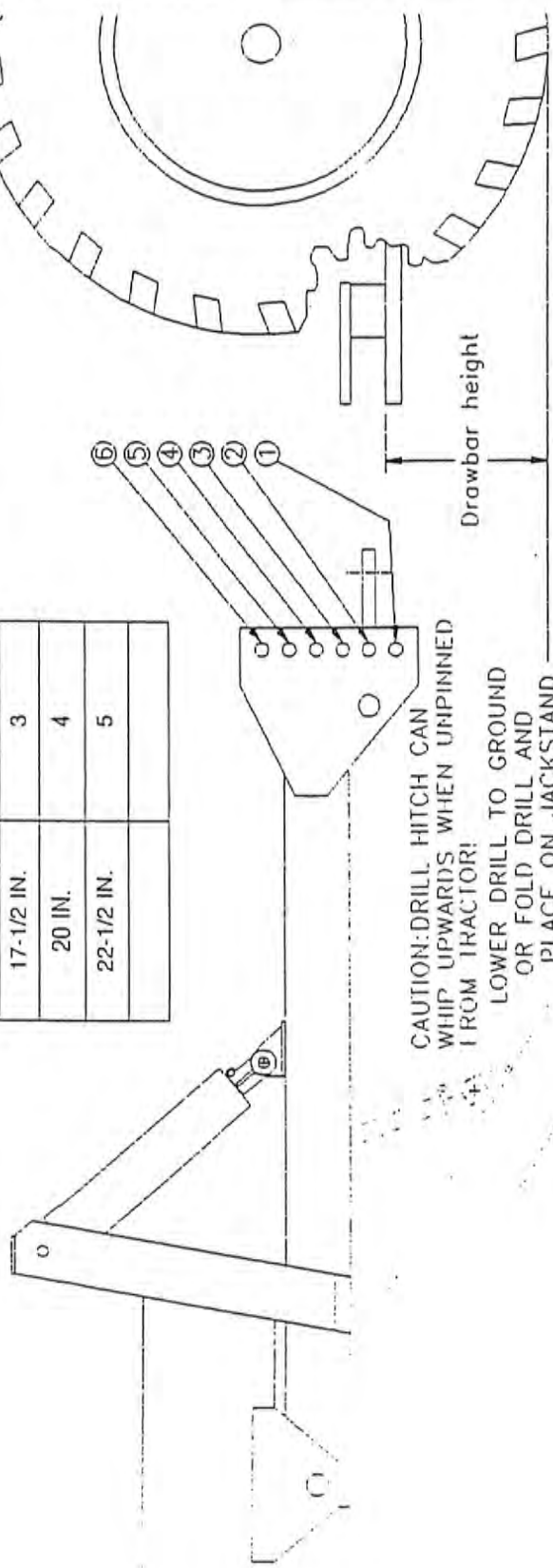


10 LUBRICATION



AS A STARTING POINT	
IF DRAWBAR HEIGHT IS:	USE HOLE NUMBER
15 IN.	2
17-1/2 IN.	3
20 IN.	4
22-1/2 IN.	5

Adjust the drawbar inward to maximize load carrying ability.



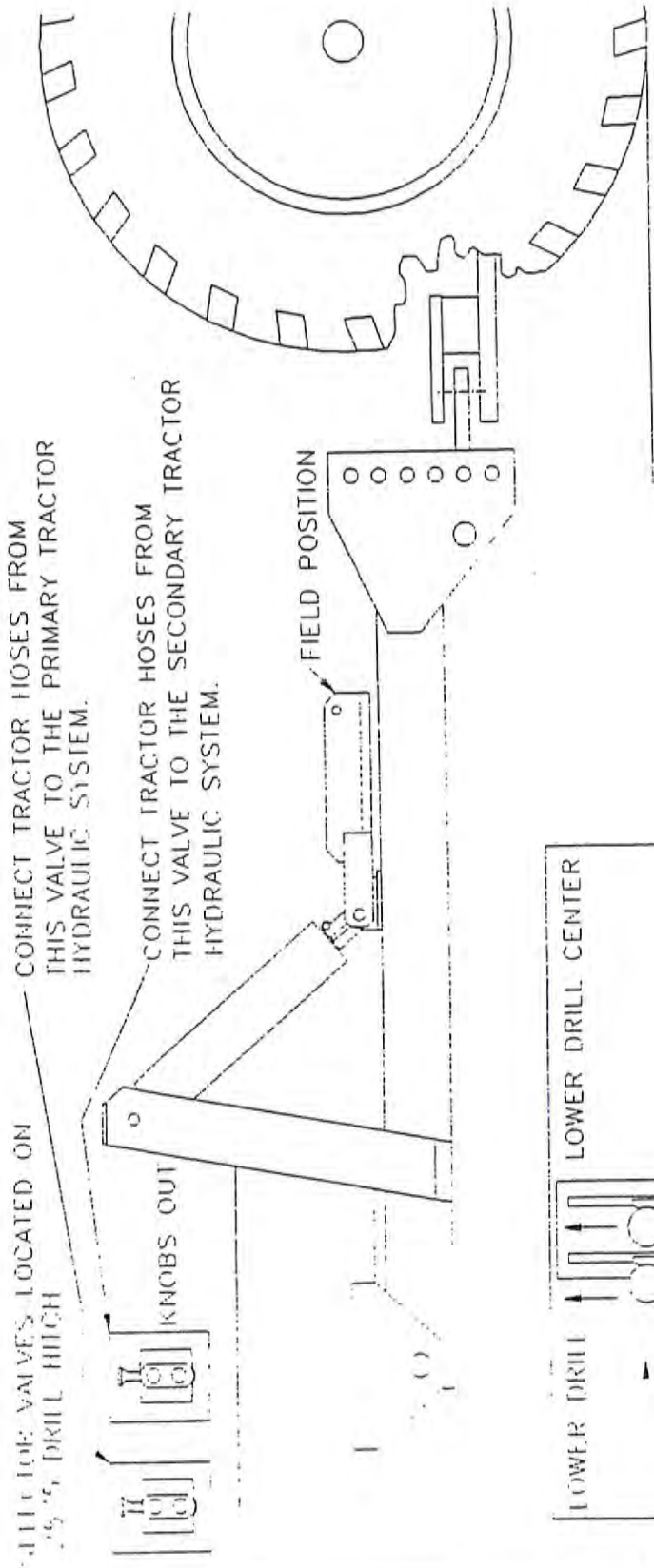
CAUTION: DRILL HITCH CAN WHIP UPWARDS WHEN UNPINNED FROM TRACTOR!
 LOWER DRILL TO GROUND OR FOLD DRILL AND PLACE ON JACKSTAND TO ADJUST HITCH.

Use a lower hole to gain more distance from wing wheels to ground while in transport.
 Use a higher hole if transport hooks do not disengage from wings when unfolding the drill.

FOR SAFE TRANSPORT THE MINIMUM TRACTOR WEIGHT SHOULD BE 18,000 POUNDS WHEN DRILL IS EMPTY.
 MINIMUM WEIGHT IN TRANSPORT IS 3000 LBS. (WITH DRILL EMPTY)

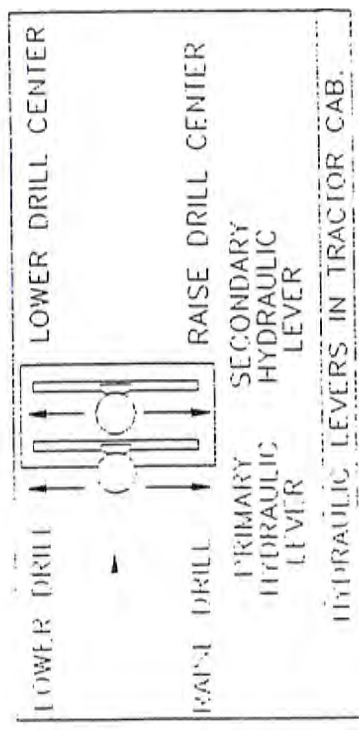
THE 2575 REQUIRES A MINIMUM OF 140 HP

12 CONNECTING TO TRACTOR



CONNECT HOSES TO TRACTOR SO THE PRIMARY HYDRAULIC SYSTEM ON THE 2575, CORRESPONDS WITH THE PRIMARY HYDRAULIC LEVER ON YOUR TRACTOR.

CONNECT SECONDARY SYSTEM IN THE SAME MANNER.



ALL TOP VALVES LOCATED ON 2 1/2" DRILL HITCH

KNOBS OUT

FIELD POSITION

LOWER DRILL LOWER DRILL CENTER

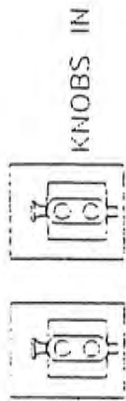
RAISE DRILL RAISE DRILL CENTER

PRIMARY HYDRAULIC LEVER

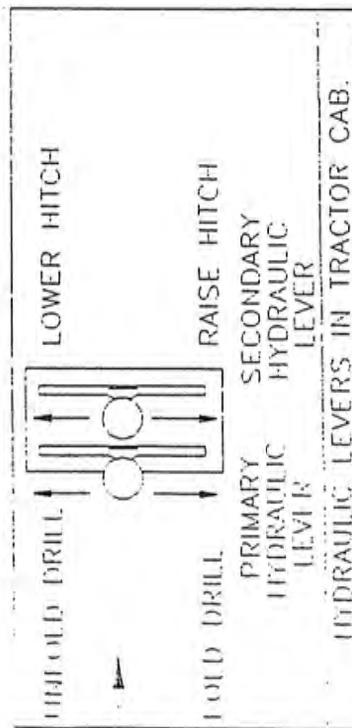
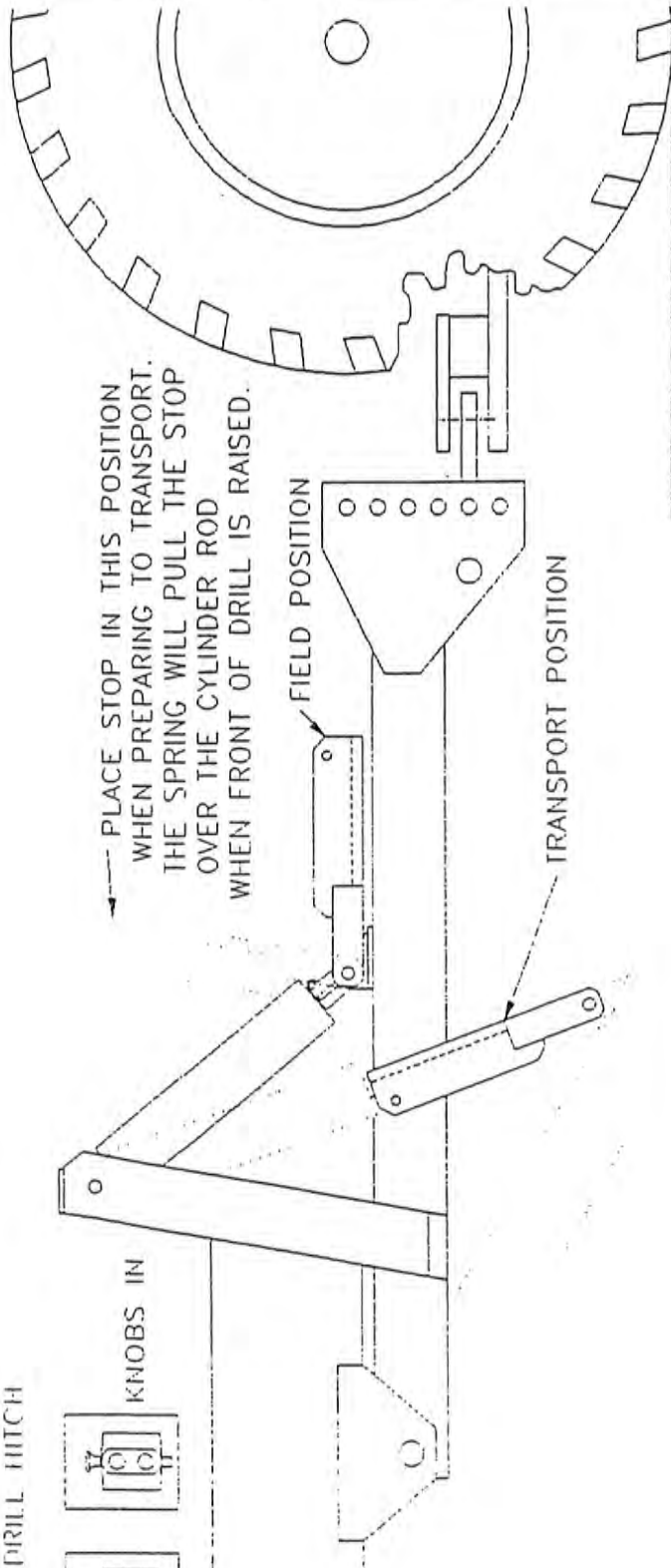
SECONDARY HYDRAULIC LEVER

HYDRAULIC LEVERS IN TRACTOR CAB.

SELECTION VALVES LOCATED ON
2575 DRILL HITCH



PLACE STOP IN THIS POSITION
WHEN PREPARING TO TRANSPORT.
THE SPRING WILL PULL THE STOP
OVER THE CYLINDER ROD
WHEN FRONT OF DRILL IS RAISED.



14 ADJUSTING DEPTH AND DOWN PRESSURE

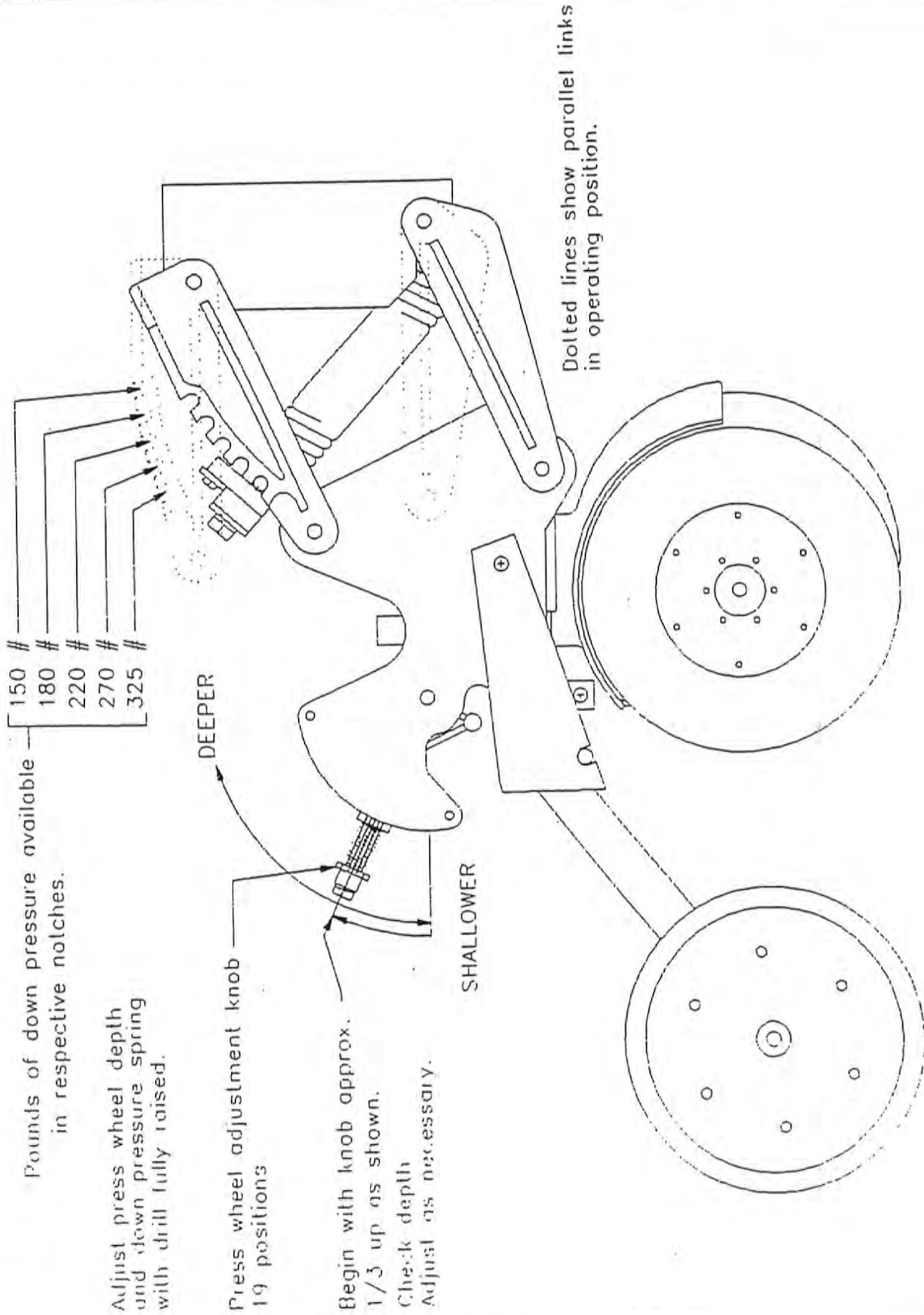
There are three adjustments on the 2575 that will affect the placement of the seed. The drill frame height is controlled by the plunger on the left side of the cart. One turn on the adjusting bolt will change the drill frame height approximately 1/4 inch. The down pressure is controlled by the position of the row unit spring in the top parallel link. Decrease the pressure by moving the spring forward and before the spring can be adjusted. In no-till begin with the spring placed in the middle notch. The seed depth is controlled by the press wheel adjustment and also by adjusting the previous tow adjustments. To increase seed depth move the press wheel adjustment knob upwards. To decrease depth move the adjustment knob down. The drill must be raised to perform this adjustment.

Use enough row unit spring pressure to penetrate to the depth desired and to provide pressure on the press wheel. When adjusting the drill, the best performance will be obtained by beginning with the drill set too shallow and work down to the desired depth by making the proper adjustments.

This disturbance and less horsepower required to pull the drill. By beginning too deep, the seed may still be at the desired depth but the drill will shatter and throw the soil away from the row units which will result in poor depth control, increased weed emergence and a rough field surface.

When the adjustments are correct the parallel linkages on the row units should be level as shown on the following page. The indicator on the right hand wing will allow you to monitor this from the tractor cab.

- The row units should be level when operating.
- Use enough down pressure to provide for penetration and packing.
- Press wheels should pack rows and provide depth control.
- Optional press wheels will tailor your drill to conditions.



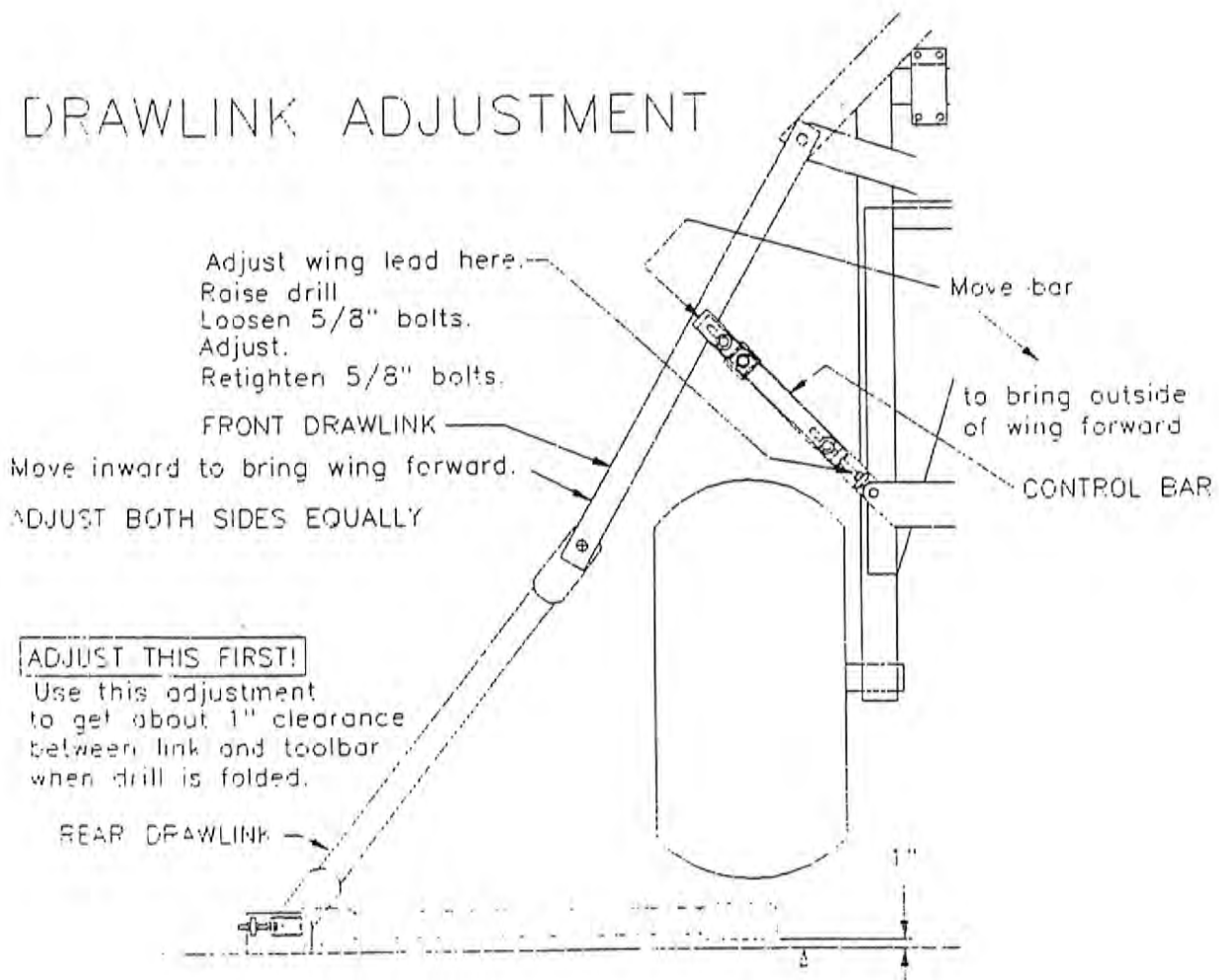
16 DRAWLINK ADJUSTMENT

The drawlinks hold the drills in line while in operation in the field. The first adjustment must be made on the wing as shown on this page. Fold the drill before performing this adjustment. 1 in. of clearance is desired between the rear link and the drill toolbar. Loosen the 1-1/4 in. bolt and use the threaded rod to push the links until the proper clearance is obtained. Tighten all bolts and nuts securely to hold this adjustment.

Fold the drill out and lower it into the field to adjust the front drawlink and control bar. Pull the drill forward while lowered in the field and stop without allowing the tractor to roll back. Observe the drills to see if they line up. If the outside ends of the drills lag to the rear, raise the drill and adjust the control bar so the front drawlink moved closer to the cart tire. Adjust both sides equally so the cart will pull straight (perpendicular to the drill boxes).

DRAWLINK ADJUSTMENT

DRAWLINK ADJUSTMENT



The standard tank will meter a variety of seeds through the fluted feed cup. The tank holds 3 bu./ft. for a total of 75 bushels. The tank may be divided and a fertilizer attachment added. The seed compartment will then hold 1.8 bu./ft. for a total of 45 bushels and the fertilizer compartment will hold 105 lbs./ft. for a total of 2600 lbs.

DRIVE SPEED

The standard cup drive sprocket is an 18 tooth. The sprocket may be replaced with a 26 tooth (Part No. 1000145) for very low rates or with a 13 tooth (Part No. 1000146) for high rates. There is a shear pin on this sprocket to protect the cups and shaft. The replacement shear pin is a 5/16" x 2" clevis pin (Part No. 4800292). (See page 22.)

METERING SYSTEM

The fluted seed cups feature a spring loaded flap in the rear of the cup. This flap will "give" to allow foreign materials, such as small stones, to pass without damaging the cup. This flap may also be adjusted open for larger seeds, such as soybeans, to feed through with virtually no damage.

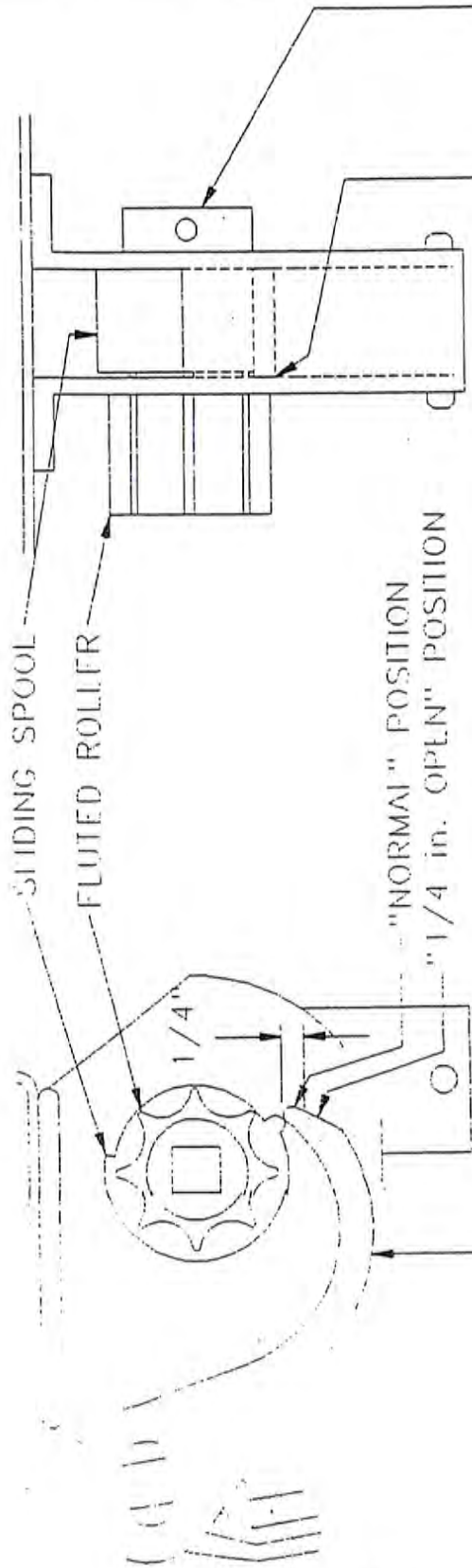
To obtain the most accurate settings, move the calibration lever towards zero slightly, and then open to desired setting. Do not force the lever when seed is in the cup as this will damage the system or force the cups out of adjustment.

CUP ADJUSTMENT

Cups may be re-adjusted by loosening the set screw in the collar on the left side of the cup. With the calibration lever locked on zero – push the collar towards the cup until the cup is fully closed, then tighten the set screw. (See page 20 & 21 for more adjustments.)

CLEAN-OUT

The drill hopper and cups may be cleaned out by loosening the cup flap lever and swinging the lever down. The seed will be dumped out of the back of the cup.

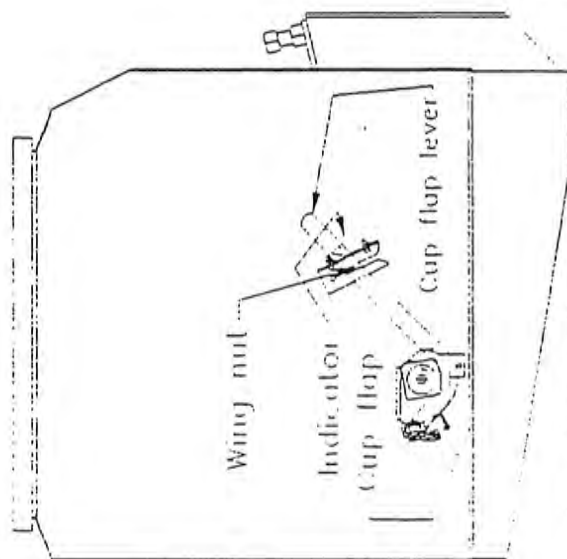


THIS PART OF SLIDING SPOOL SHOULD TOUCH INSIDE OF CUP BODY WHEN CALIBRATION LEVER IS ON ZERO.

IF INDIVIDUAL CUPS ARE NOT CORRECT:

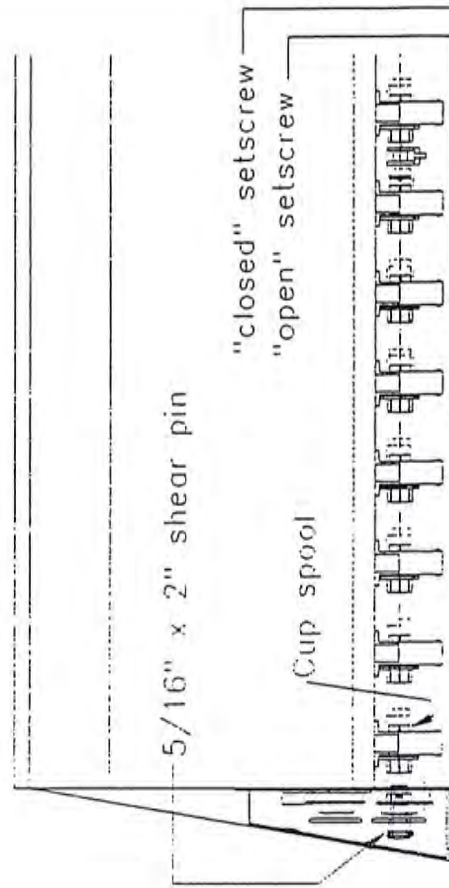
- SET CALIBRATION LEVER ON "0"
- LOOSEN SET COLLAR
- GENTLY PUSH SLIDING SPOOL AND FLUTED ROLLER ASSEMBLY UNTIL SPOOL TOUCHES INSIDE WALL OF CUP
- TIGHTEN SET COLLAR.

FLAP-OUT POSITION



To set cup flap:

1. Open cup flaps and close while observing flap from front of cup. When flap just touches bottom of cup spool, STOP and lock in place with wing nut. Pointer should point to "NORMAL" on indicator.
2. Adjust as necessary

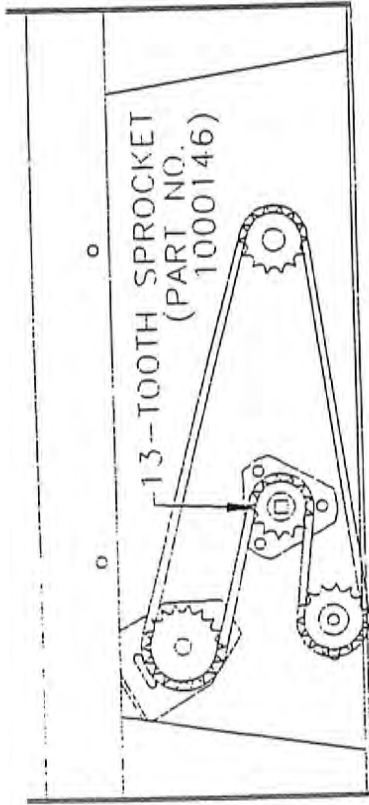


To zero the calibration lever:

1. Loosen "A" bolts and knob "B"
2. Back-off setscrews "C"
3. Be sure seed cups are fully closed then rotate display plate until pointer lines up with zero. Tighten bolts "A"
4. Adjust "closed" setscrew against block.
5. Open cups until fluted portion is even with inside edge of cup.
7. Adjust "open" setscrew against block.

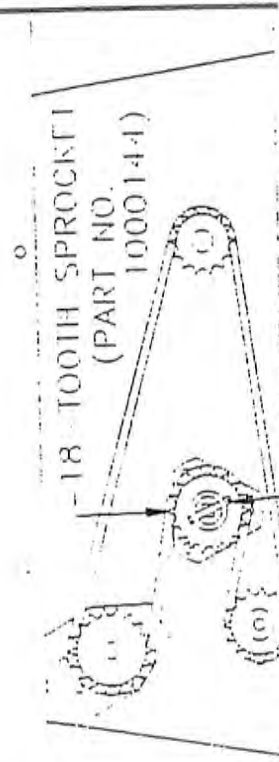
Calibration lever

STANDARD DRIVE SHOWN WITH
13-TOOTH SPROCKET TO DRIVE
SEED CUPS.



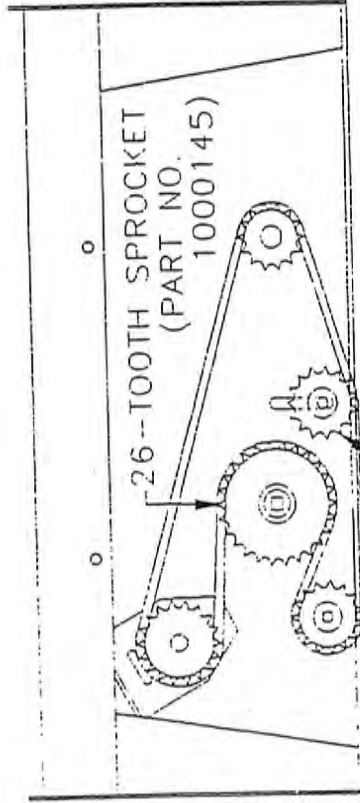
HIGH SPEED DRIVE

18-TOOTH SPROCKET
(PART NO. 1000144)



SHEAR PIN
(PART NO. 4800292)
COUNTER KEY PART NO. 4800110

26-TOOTH SPROCKET
(PART NO. 1000145)



(PART NO. 1000039)
EXTRA IDLER REQUIRED FOR CHAIN CLEARANCE.
LOW SPEED DRIVE

SETTING AND CHECKING THE FEED RATE 21

The rates shown on the charts serve only as a starting point. Due to variations in material size and density, the rates may vary from the chart. The following method may be used to determine a proper setting for your particular seed or fertilizer.

1. Select the desired rate from the chart.
2. Loosen knob on calibration lever, move the lever slightly towards "0" (approx. 1/4") and then move the lever until pointer lines up with desired setting. Tighten knob.
3. Some larger seeds require the cup flaps to be open 1/4" to reduce seed damage. (See page 20.)
4. High speed and low speed settings from the chart will require the use of different drive sprockets. A 26-tooth sprocket (Part No. 1000145) is used for low speed setting and a 13-tooth sprocket (Part No. 1000146) is used for the high speed setting.

CHECKING THE FEED RATE

1. Measure a distance of 436 ft. (1/4 acre) and mark with flags, etc.
2. Remove one hose from a grain cup and attach a bag or similar container to the grain cup.
3. Operate drill at intended planting speed through the entire length of test track.
4. Weigh the sample in ounces (minus the weight of the sample container). Use the following formula to determine lbs./acre.

For 7-1/2" row spacing
ounces x 10 = lbs./acre

EXAMPLE

Sample + container weight	15.0 oz.	8.5 oz.
Container weight	-6.5 oz.	<u>x 10</u>
	8.5 oz.	85 lbs./acre

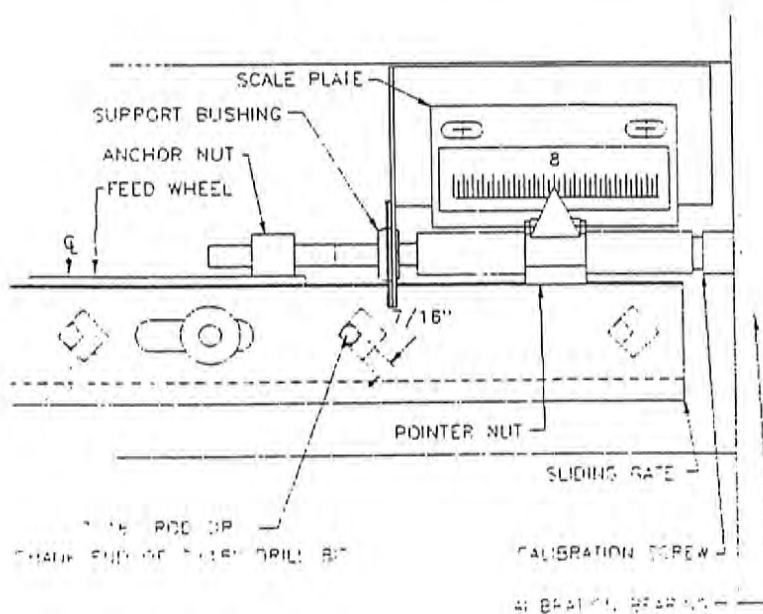
24 FERTILIZER OPTION CALIBRATION

CALIBRATION POINTER ADJUSTMENT (FERTILIZER ONLY)

To calibrate the fertilizer metering system, follow these steps:

1. Place both, the pointer nut and anchor nut in the center of their respective thread.
2. Insert a short length of 7/16" rod or the shank end of a 7/16" drill bit into the square hole in sliding gate as shown.
3. Tighten bearing bolts securing calibration screw to end of tank.
4. Tighten bolts securing anchor nut to sliding gate.
5. Place scale plate on tank so number "8" is directly in line with top of pointer. This will insure pointer setting to coincide with chart. Scale plate must be parallel with calibration screw to allow pointer to operate smoothly along plate.
6. Remove 7/16" shaft or drill bit. The center line of the feed wheel should line up with the center of the opening in the tank/control plate as viewed from the outside of the box, when the pointer is on number "8".

Check the fertilizer rate in the same manner as the seed rate. (See page 23).





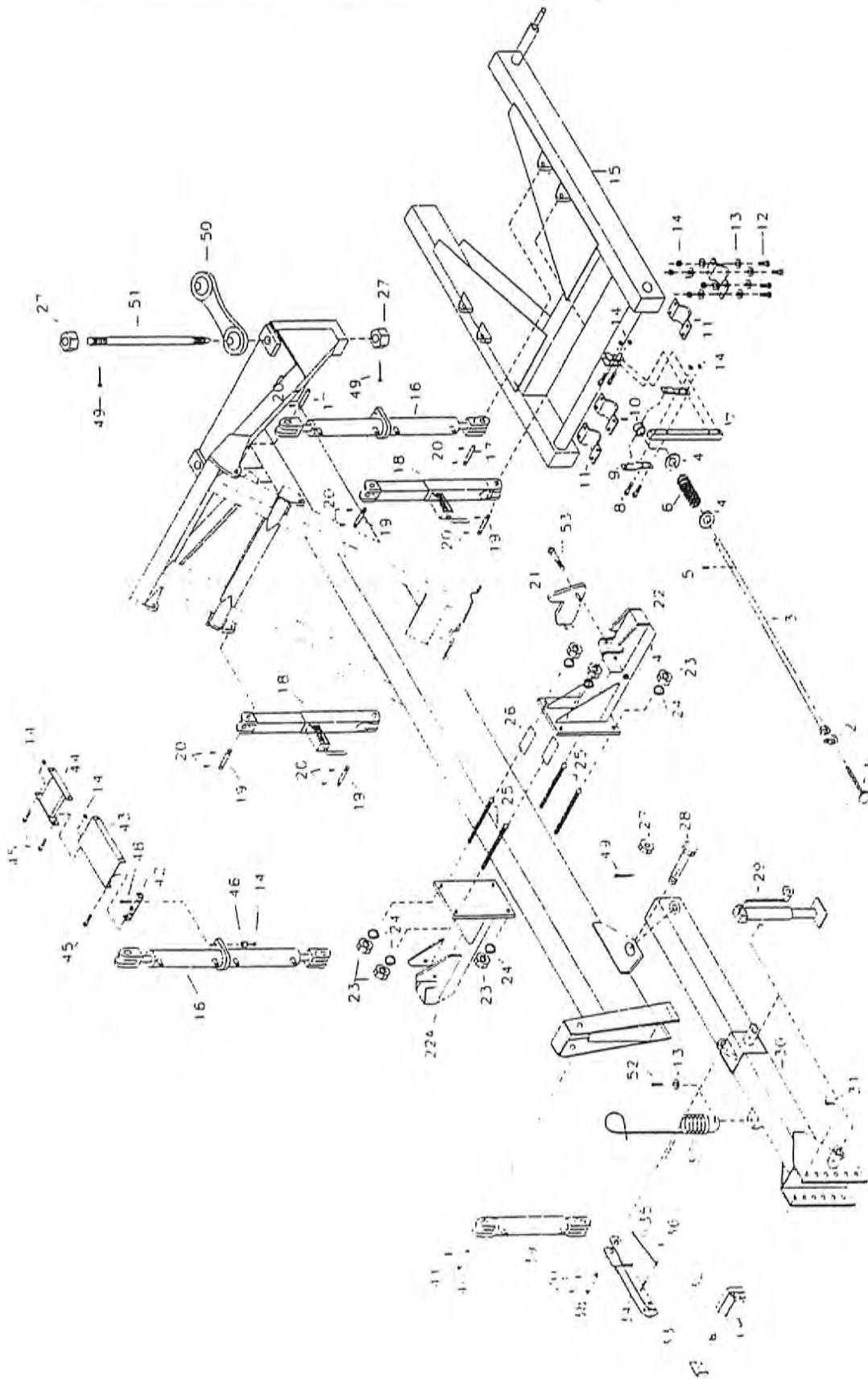
**2575 Folding
No-Till Drill
Parts Book**



TABLE OF CONTENTS 29

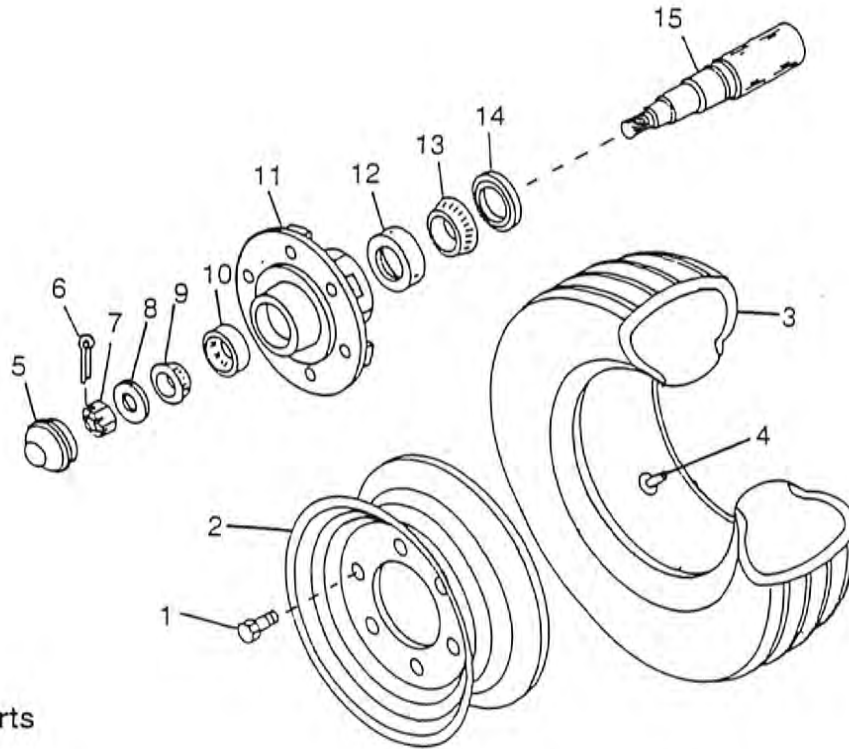
Cart Main Frame.....	30-31
Axles And Wheels.....	33
Primary Hydraulics	34-35
Secondary Hydraulics.....	36-37
Linkages	38-39
Wing Mainframe	40-41
Drive Wheel	42-43
Tank	44-47
Tank End Drive	48-49
Seed Cup.....	51
Run	52-53
Coulter And Disk.....	54-55
Fertilizer Option	56-57
Fertilizer Setting Assembly	58-59
Marker Option	60-61
Harrow Option	62-63
Legume Box Option.....	64-65
Seed Index Assembly Legume Box.....	66
Cup Assembly Legume Box	67
Decals.....	68-69
Press Wheel Options	70-71

30 CART MAIN FRAME



CART MAIN FRAME 31

ITEM	PART NO.	QTY.	DESCRIPTION	ITEM	PART NO.	QTY.	DESCRIPTION
1	8900122	1	Pushrod Adjustment Screw	50	8900061	2	Link
2	8900052	1	Pushrod Lock	51	8900111	2	2"x30" Hinge Pin
3	8900053	1	Pushrod	52	4800010	1	5/8"x2" Grade 5 Bolt
4	5000069	2	2-1/8"x1-3/8"x10 Gauge Machine Washer	53	4800158	2	5/8"x4-1/2" Grade 5 Bolt
5	4800022	2	3/8"x2" Rolled Pin	54	5000002	2	5/8" Flat Washer
6	6100037	1	Spring				
7	8900106	1	Pushrod Arm				
8	4800070	4	1/2"x2-1/2" Grade 5 Bolt				
9	8900099	2	1/4"x1-1/2" Pushrod Yoke Strap				
10	8900043	1	Pushrod Guide Yoke				
11	6600075	4	Wheelframe Saddle				
12	4800082	16	1/2"x1-1/2" Grade 5 Bolt				
13	5000004	32	1/2" Flat Washer				
14	4900014	32	1/2" Lock Nut				
15	8900024	1	Cart Wheel Frame				
16	4100109	2	4"x12" Double Cylinder				
17	4100087	4	1"x3-1/2" Cylinder Pin				
18	8900123	2	Complete Safety Latch (See Page 38)				
19	8900107	4	1"x3-5/8" Pin				
20	4800120	16	3/16"x1-3/4" Cotter Key				
21	8900054	2	Wing Fold Latch Handle				
22	8900008	1	Wing Fold Latch LH				
22A	8900009	1	Wing Fold Latch RH				
23	4900048	8	1-1/4" NC Hex Nut				
24	50090086	8	1-1/4" Lock Washer				
25	8900097	4	1-1/4"x11-1/2" Redi Rod				
26	3700274	2	Hydraulic Hose Protector				
27	4900073	5	2" NC Slotted Nut				
28	4800298	1	2"x9" Grade 5 Bolt				
29	6400010	1	7SM Jack				
30	8900132	1	Hitch				
31	4800076	1	5/16" Lynch Pin				
32	8900017	1	Standard Hammerstrap Hitch Block				
32A	8900016	1	Optional Clevis Hitch Block				
33	8900055	1	Hitch Block Pin				
34	8900060	1	Hitch Cylinder Safety Stop				
35	6100056	1	Spring				
36	4800127	2	1/8"x1" Cotter Key				
37	7500170	1	Hose Minder				
38	8900112	1	Hitch Cylinder Pin (Bottom)				
39	4100106	1	4"x16" Cylinder				
40	8900108	1	Hitch Cylinder Pin (Top)				
41	4800043	1	1/4"x2-1/2" Cotter Key				
42	8900098	2	Cylinder Stabilizer Bracket				
43	8900109	2	Cylinder Stabilizer Channel				
44	8900056	2	Cylinder Stabilizer				
45	4800018	12	1/2"x1-1/4" Grade 5 Bolt				
46	8900110	4	Cylinder Stabilizer Bushing				
47	4900012	2	5/8" Lock Nut				
48	4800178	4	1/2"x1-3/4" Grade 5 Bolt				
49	4800306	5	3/8"x4" Cotter Key				

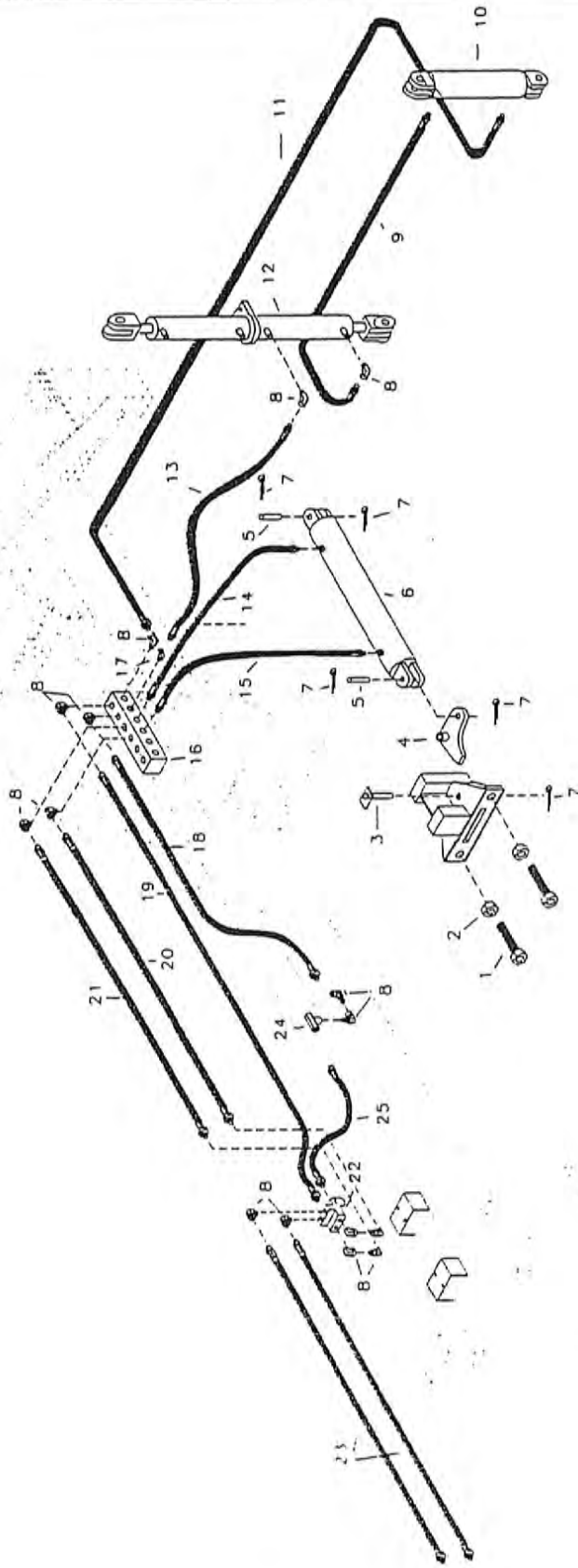


Running Gear Parts

ITEM	PART NO.	QTY.	DESCRIPTION
1	4800294	6	1/2"x2" Wheel Bolt
2	2800032	1	18x16.1 8 Bolt Wheel
3	2600027	1	21.51x16.1 10 Ply Implement Tire
4	2900109	1	Hub Complete w/Bearings
5	2900130	1	Dust Cap
6	4800103	1	1/4"x2" Cotter Key
7	4900036	1	1-1/4" NF Nut
8	5000065	1	2-1/2" OD x 1-1/4" ID x .224" Washer
9	2900125	1	Outer Cone
10	2900126	1	Outer Cup
11	2900129	1	Hub
12	2900127	1	Inner Cup
13	2900128	1	Inner Cone
14	2900131	1	Grease Seal
15	3000031	1	Spindle

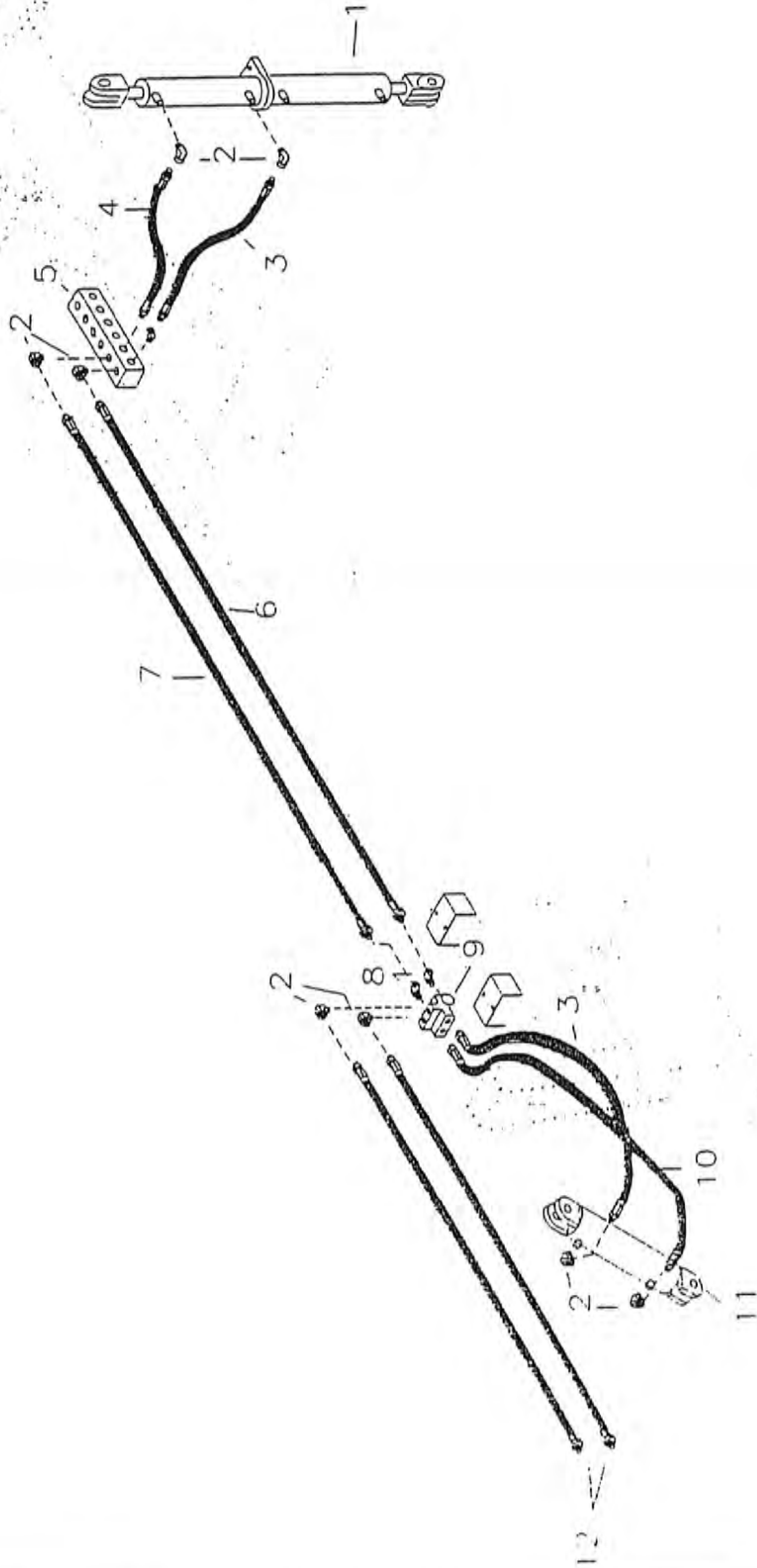
34 PRIMARY HYDRAULICS

Primary Hydraulic Circuit
Functions: 1. Field position lift
2. Folding drill

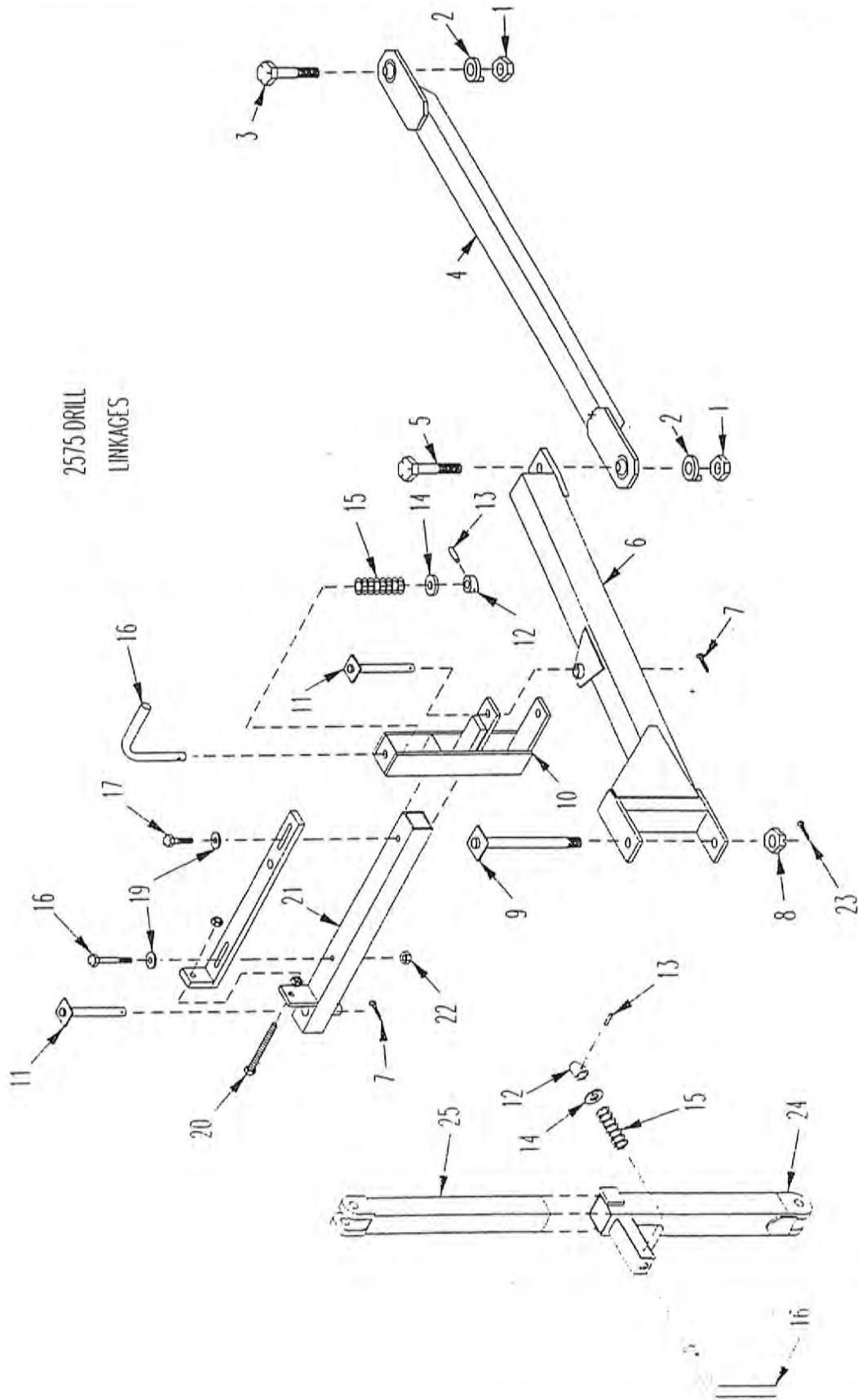


36 SECONDARY HYDRAULICS

Secondary Hydraulic Circuit
Functions: 1. Hump middle
2. Hitch lift



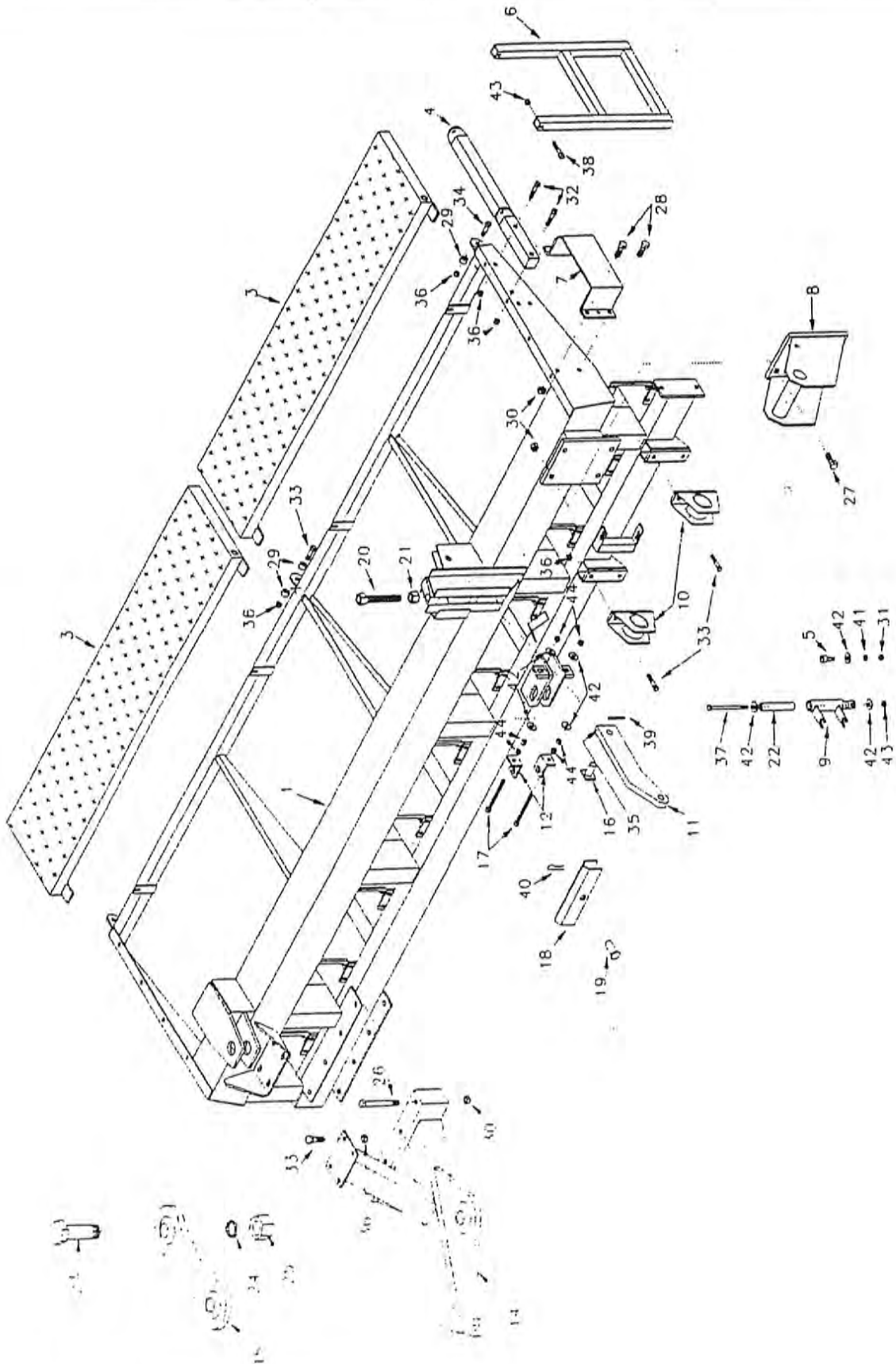
38 LINKAGES



LINKAGES 39

ITEM	PART NO.	QTY.	DESCRIPTION
1	4900048	2	1-1/4" NC Hex Nut
2	5000086	2	1-1/4" Lock Washer
3	4800296	1	1-1/4"x5" Grade 5 Bolt
4	8900023	1	Rear Drawlink
5	4800311	1	1-1/4"x4-1/2" Grade 5 Bolt
6	8900020	1	Front Drawlink LH
6A	8900021	1	Front Drawlink RH (Not Shown)
7	4800120	2	3/16"x1-3/4" Cotter Key
8	4900036	1	1-1/4" NC Slotted Nut
9	8900022	1	Drawlink Hinge Pin
10	8900048	1	Control Linkage Pivot
11	8900025	2	Control Link Hinge Pin
12	8900104	2	Safety Latch Ramp
13	4800305	2	5/16"x1-1/2" Rolled Pin
14	5000068	2	2-1/16"x1-1/16" Machine Washer
15	6100037	2	Spring
16	8900105	2	Safety Latch Handle
17	4800079	1	5/8"x2-1/2" Grade 5 Bolt
18	4800158	1	5/8"x4-1/2" Grade 5 Bolt
19	5000050	3	1/4" Thick Washer
20	8900050	1	Control Linkage Adj. Bolt
21	8900049	1	Control Link Tube
22	4900012	4	5/8" Top Lock Nut
23	4800103	1	1/4"x2" Cotter Key
24	8900124	1	Bottom Cart Safety Latch
25	8900041	1	Top Cart Safety Latch

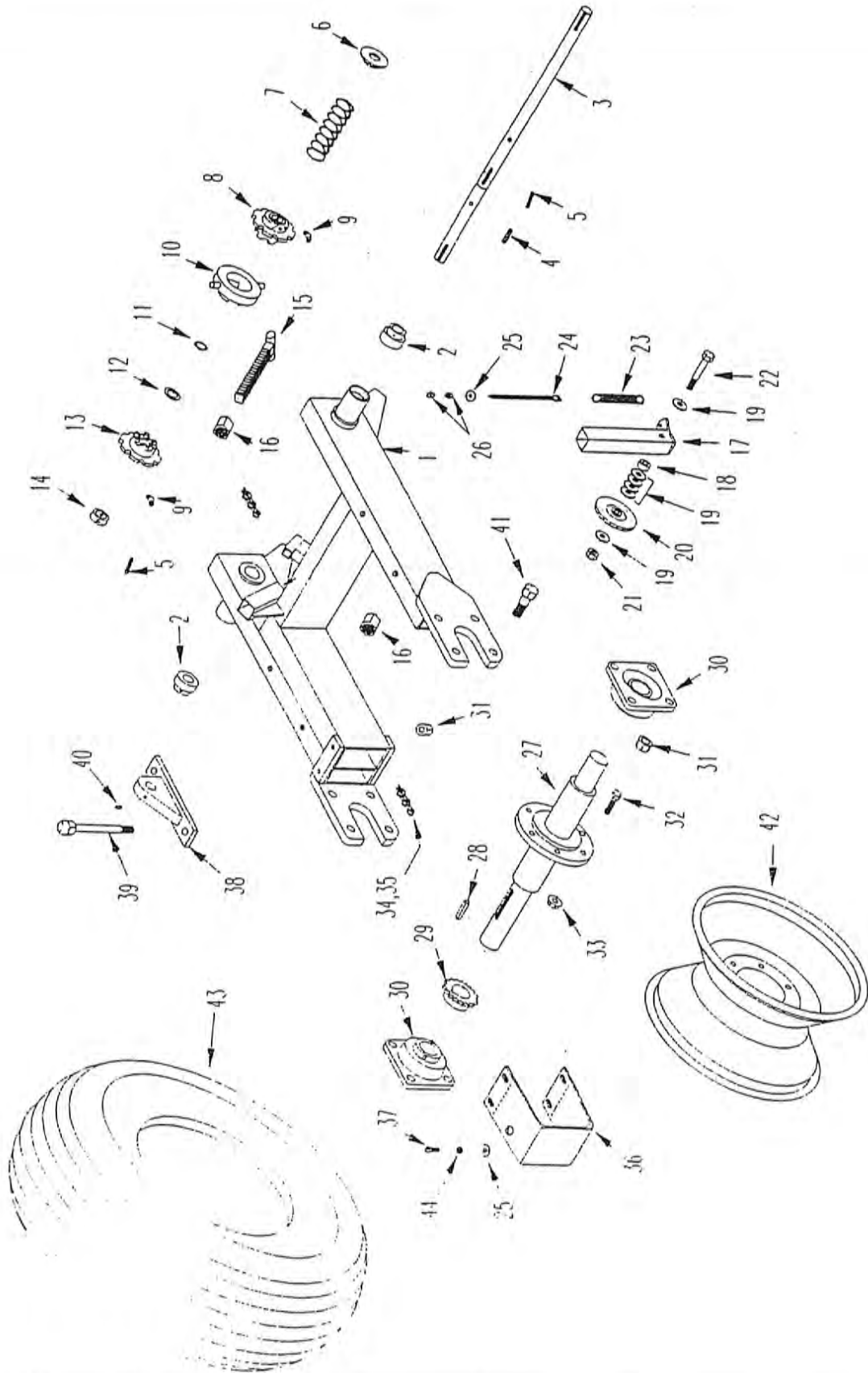
40 WING MAINFRAME



WING MAINFRAME 41

ITEM	PART NO.	QTY.	DESCRIPTION
1	8900065	1	LH Wing Frame
2	8900066	1	RH Wing Frame (Not Shown)
3	8900067	4	Walkway
4	8900011	1	LH Ladder Mount
4A	8900010	1	RH Ladder Mount (Not Shown)
5	4600228	2	Cam Roller
6	8900012	2	Ladder
7	8900084	2	Weight Mount
8	8900009	1	LH Wing Fold Latch
8A	8900008	1	RH Wing Fold Latch (Not Shown)
9	8900068	2	Clutch Fork
10	8900069	4	Wing Wheel Hinge
11	8900071	2	Drive Wheel Floating Link
12	8900121	4	Drawlink Fold Position Adj.
13	8900007	1	RH Wing Hinge (Not Shown)
14	8900006	1	LH Wing Hinge
15	8900061	2	Link
16	8900070	2	Floating Link Pin
17	8900127	4	Adjusting Bolt
18	8900051	2	Cylinder Safety Stop
19	4800045	2	Cylinder Safety Stop Pin
20	8900128	2	Floating Link Adjustment Bolt
21	49000031	2	1" NC Nut
22	8900135	2	1"ODx0.512"IDx6.125" Bushing
23	4800297	2	2"x5-1/2" Grade 5 Bolt
24	5000066	2	2" Lock Washer
25	4900074	2	2" NC Nut
26	4800295	8	3/4"x7" Grade 5 Bolt
27	4800115	8	3/4"x2-1/2" Grade 5 Bolt
28	4800033	8	3/4"x2" Grade 5 Bolt
29	8900137	8	Bushing
30	4900013	24	3/4" Lock Nut
31	4900007	2	1/2" NF Nut
32	4800021	4	5/8"x3" Grade 5 Bolt
33	4800010	20	5/8"x2" Grade 5 Bolt
34	48000106	4	5/8"x1-1/2" Grade 5 Bolt
35	3800082	2	Straight Zerk
36	4900012	28	5/8" Top Lock Nut
37	4800262	2	1/2"x7-1/2" Grade 5 Bolt
38	4800051	4	1/2"x2-1/2" Grade 5 Bolt
39	4800157	2	3/16"x2-1/2" Cotter Key
40	4800056	2	Hairpin
41	5000006	2	1/2" Lock Washer
42	5000004	12	1/2" Flat Washer
43	4900014	6	1/2" Lock Nut
44	4900001	12	1/2" NC Nut

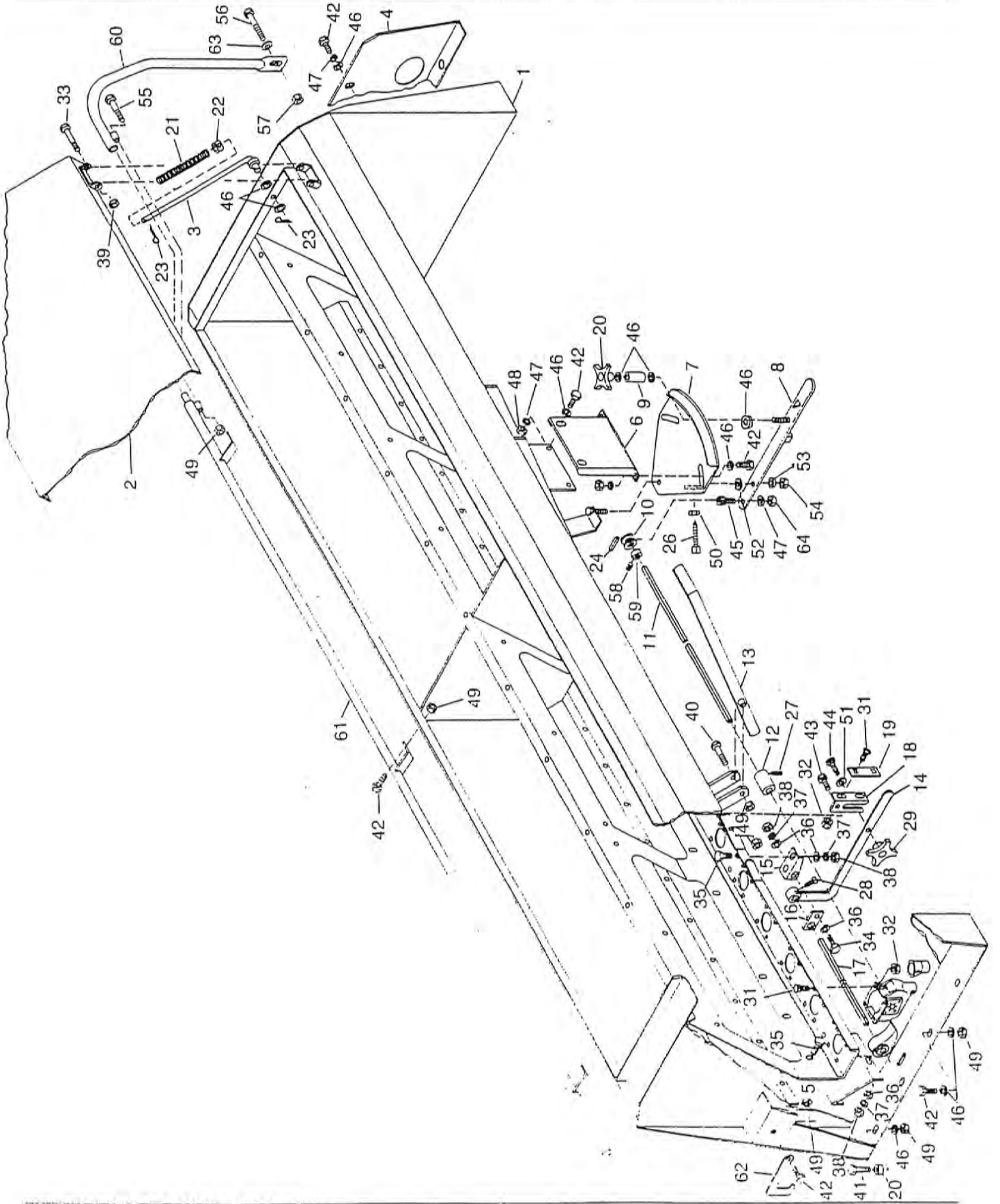
42 DRIVE WHEEL



DRIVE WHEEL 43

ITEM	PART NO.	QTY.	DESCRIPTION
1	8900037	1	Wing Wheel Frame
2	2000047	2	1" Bore Cylindrical OD w/Collar
3	8900076	1	Drive Shaft
4	6200005	1	1/4" SQx1-1/2" key
5	4800292	2	5/16"x2" Rolled Pin
6	8900038	1	Spring Cap
7	6100054	1	Spring
8	7400301	1	Clutch Half/Driven/With Keyway
9	3800098	2	1/4" NF 45° Grease Zerk
10	7500356	1	Clutch Ring
11	4800903	1	Crescent Type Snap Ring
12	5000040	1	1-1/2"ODx1-1/32"IDx.137 Washer
13	7400300	1	Clutch Half/Drive/No Keyway
14	8900083	1	Drive Clutch Collar
15	8900046	1	Clutch Pushrod
16	4900037	2	1-1/8" NC Standard Nut
17	8900039	1	Tightener Slide
18	8900102	1	Spacer 1"ODx.510"IDx5/8"
19	5000004	6	1/2" Flat Washer
20	1000039	1	5015 1/2" Bore Idler
21	4900014	1	1/2" Lock Nut
22	4800231	1	1/2"x3-3/4" Grade 5 Bolt
23	6100010	1	Pull Spring
24	4800304	1	3/8"x6-7/8" Spade Bolt
25	5000001	5	3/8" Flat Washer
26	4900002	2	3/8" NC Standard Nut
27	8900029	1	Drive Wheel Axle
28	6200007	1	3/8" SQ x 1-1/2" Key
29	1000143	1	5018 1-3/4" Sprocket Hard Teeth
30	2000034	2	1-3/4" 4B Cast Flange Bearing
31	4900012	10	5/8" Lock Nut
32	4800354	6	1/2" NF x 2" Wheel Bolt
33	4900018	6	1/2" NF Toplock Flange Nut
34	1100167	1	2050 Chain 51 Links
35	1100111	1	2050 Connector Link
36	8900103	1	Drive Chain Shield
37	4800293	4	3/8"x7/8" Grade 5 Bolt
38	8900030	1	Wing Cylinder Anchor
39	4800144	2	5/8"x6-1/2" Grade 5 Bolt
40	3800082	1	1/4" NF Straight Zerk
41	4800079	8	5/8"x2-1/2" Grade 5 Bolt
42	2800024	1	10"x15" 6 Bolt Rim
43	2600411	1	Tube For 2600028 (Not Shown)
44	5000019	4	3/8" Lock Washer

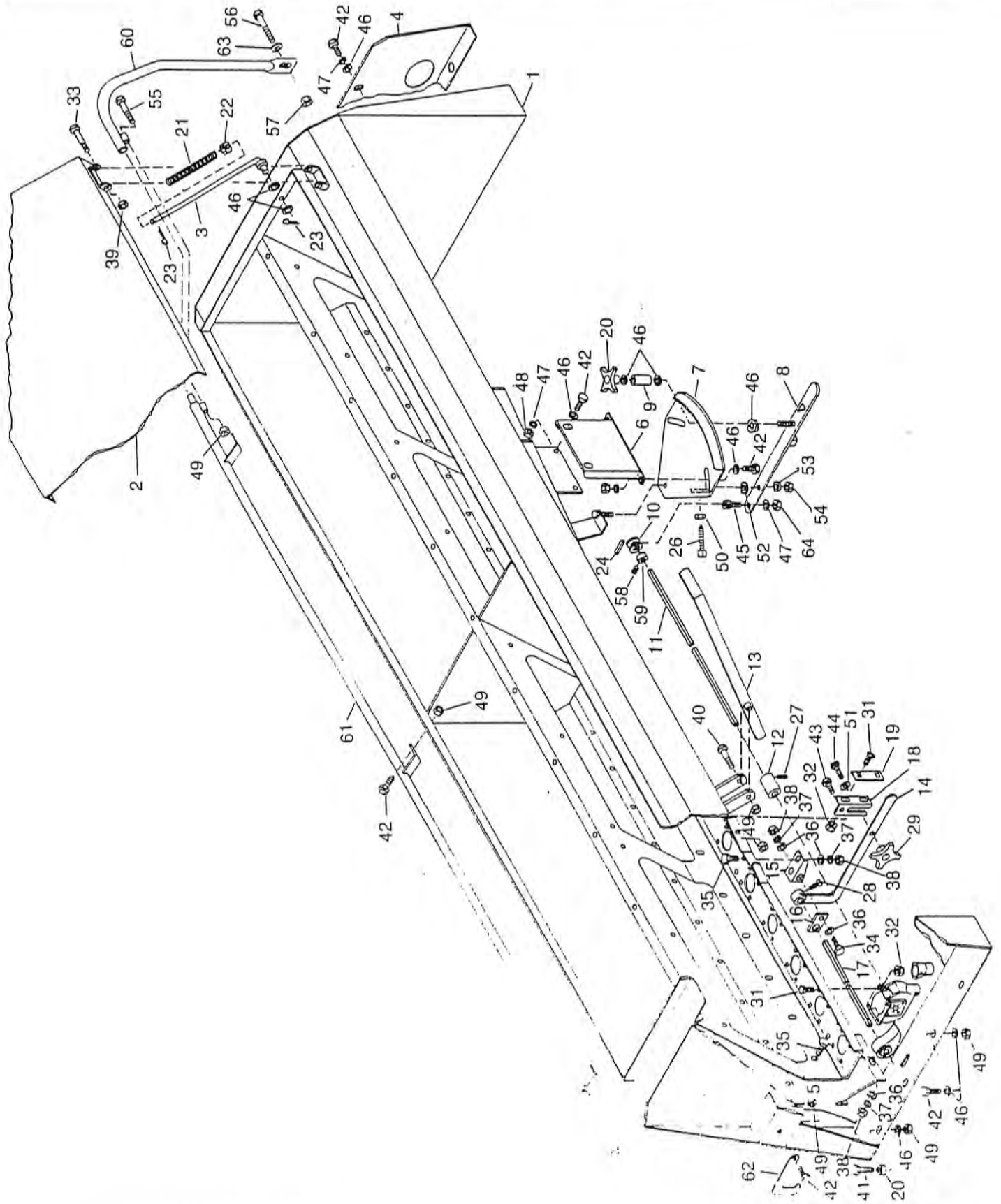
44 TANK



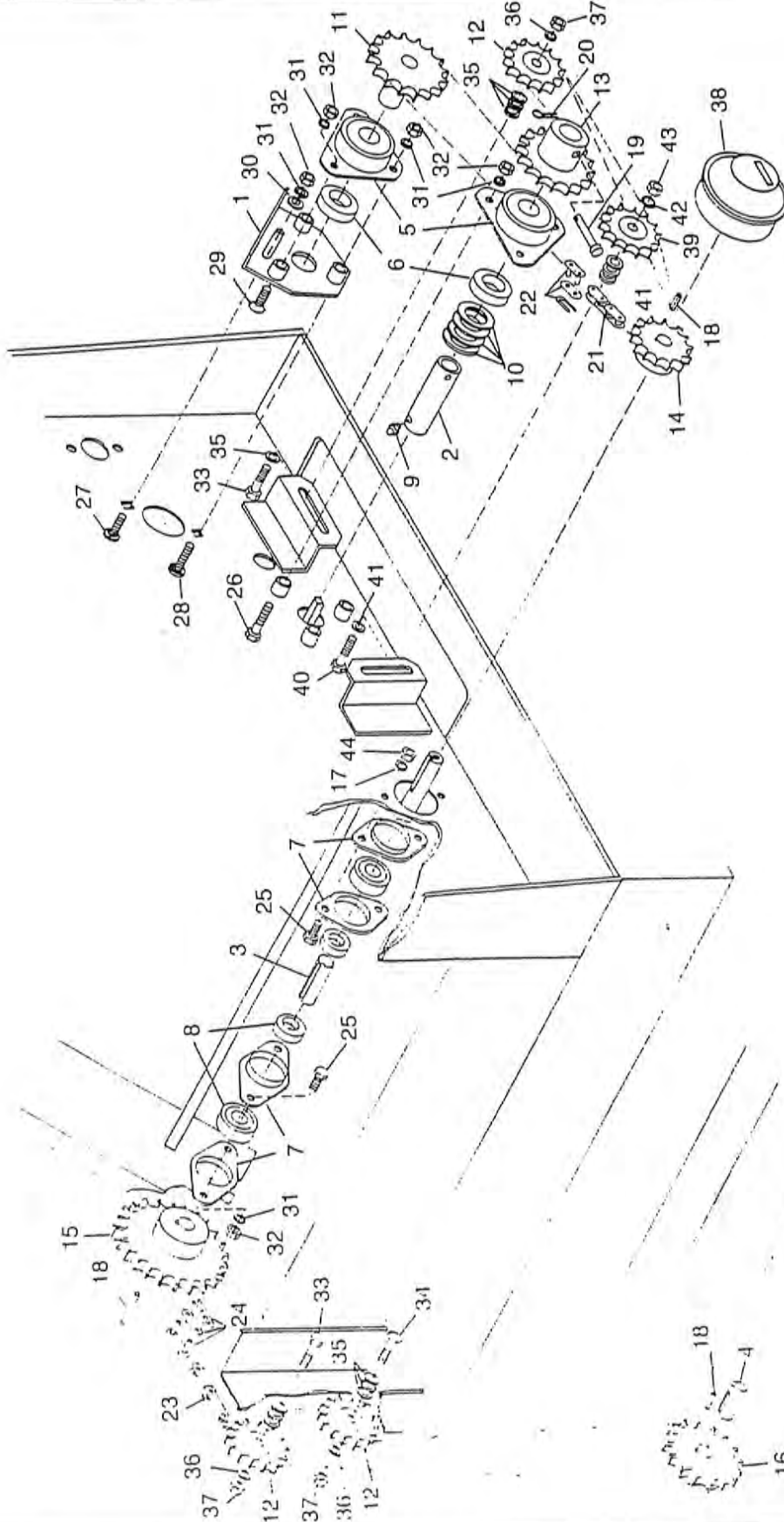
TANK 45

ITEM	PART NO.	QTY.	DESCRIPTION
1	8900062	1	LH Tank Weldment
1A	8900063	1	RH Tank Weldment (Not Shown)
2	8900064	2	Tank Cover
3	8900042	4	Tank Cover Spring Rod
4	8900091	1	Tank Shield w/Hole
4A	8900089	1	Tank Shield LH
4B	8900090	2	Tank Shield RH
5	8900040	2	False Bottom
5A	8900139	2	False Bottom w/Tab
6	8900028	2	Calibration Display Hanger
7	8900018	2	Calibration Display
8	8900019	2	Calibration Lever
9	8900073	2	Knob Spacer
10	8900095	2	Calibration Drive Sleeve
11	8900117	2	Cup Drive Shaft
12	8900113	2	Monitor Cam
13	8900027	1	Monitor Arm RH
13A	8900026	1	Monitor Arm LH
14	8900125	4	Cup Flap Level
15	8900118	12	Cup Flap Bushing Mount
16	8900085	12	Cup Flap Bushing
17	8900088	4	Cup Flap Shaft
18	8900120	2	Cup Flap Adjustment Anchor LH
18A	8900094	2	Cup Flap Adjustment Anchor RH
19	8900072	4	Cup Flap Indication Plate
20	89000114	8	Tank End Shield Spacer
21	6100057	4	Tank Cover Spring
22	2000810	4	7/16" Shaft Collar w/Set Screw
23	4800044	8	5/32"x1-1/2" Cotter Key
24	5000073	2	1/4"x1-1/2" Rolled Pin
25	4800313	8	3/16"x3/4" Rolled Pin
26	4800341	4	3/8"x2-1/2" SQ Head Set Screw
27	4800342	4	1/4"x1" Socket Set Screw
28	4800314	4	5/16"x1/2" SQ Head Set Screw
29	7500374	6	Knob
30	8900126	40	Seed Cup (See Page 51)
31	4800291	168	1/4"x3/4" Carriage Bolt
32	4900040	168	1/4" Flange Nut
33	4800170	8	5/16"x3-1/2" Grade 5 Bolt
34	4800013	12	5/16"x1" Grade 5 Bolt
35	4800008	104	5/16"x3/4" Grade 5 Bolt
36	5000023	128	5/16" Flat Washer
37	5000022	116	5/16" Lock Washer
38	4900003	116	5/16" NC Nut
39	4900011	8	5/16" Lock Nut
40	3800146	2	3/8"x2" Grade 5 Bolt
41	4800035	8	3/8"x1-1/2" Grade 5 Bolt
42	4800003	32	3/8"x1" Grade 5 Bolt
43	4800164	4	3/8"x3/4" Grade 5 Bolt
44	4800153	4	3/8"x1" Carriage Bolt
45	7500373	2	Cam Roller
46	5000001	44	3/8" Flat Washer

46 TANK



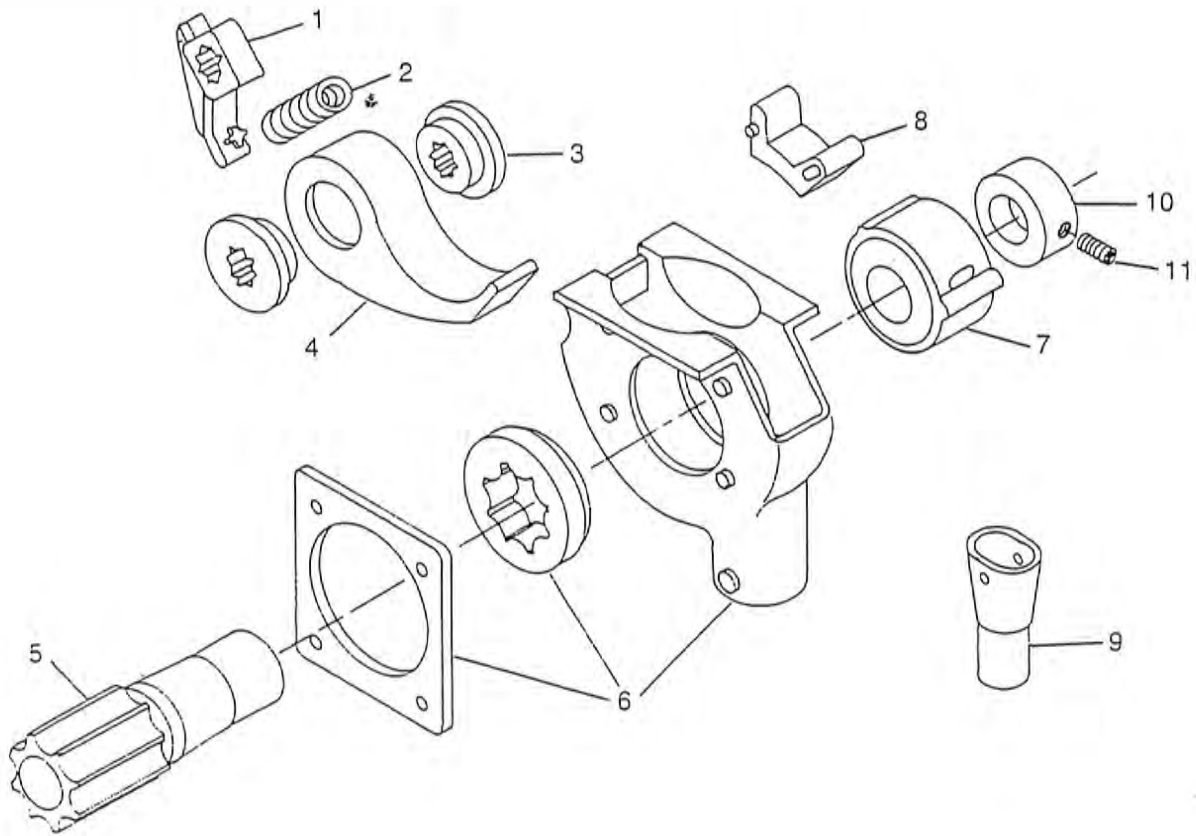
48 TANK END DRIVE



TANK END DRIVE 49

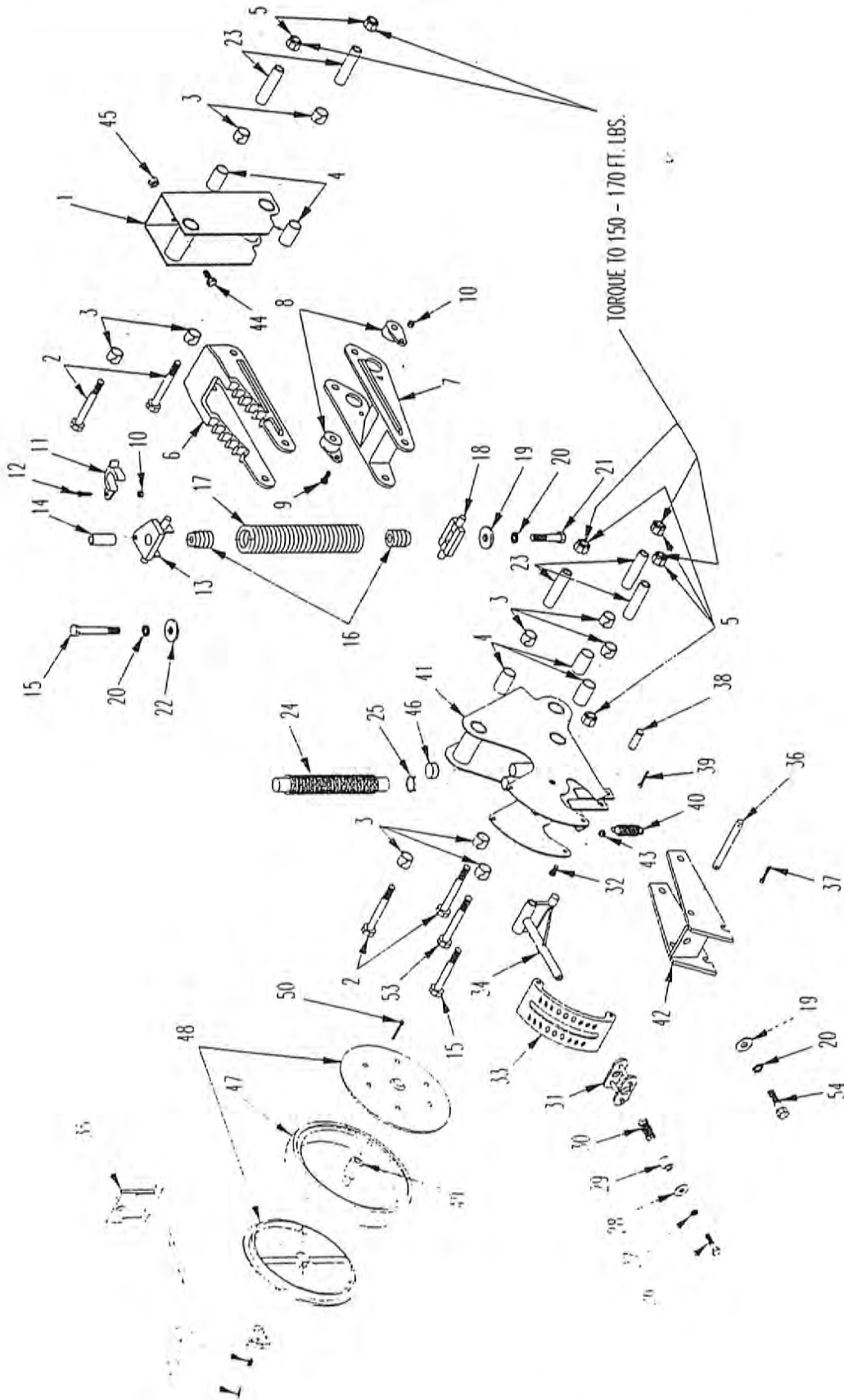
ITEM	PART NO.	QTY.	DESCRIPTION
1	8400074	2	Drive Sealer Plate
2	8900116	2	Cup Drive Sleeve
3	8900115	2	Intermediate Drive Shaft
4	8900076	2	Drive Shaft
5	8400070	4	Bracket w/Bearing
6	2000802	4	1-1/4" ID Lock Collar
7	2000703	8	Flangette 2-100
8	2000002	4	Bearing 1" Bore w/Lock Collar
9	3800082	2	1/4" Zerk
10	5000072	8	1-1/4"IDx1-7/8"ODx14 Ga. Washer
11	8400071	2	5018 Sprocket
12	1000039	6	5015 1/2" Bore Idler
13	1000144	2	5018 Sprocket
14	1000029	2	5014 Sprocket
15	1000142	2	5028 Sprocket
16	1000027	2	5018 Sprocket
17	5000022	4	5/16" Lock Washer
18	6200010	6	1/4"SQ x 1" Key
19	4800292	2	5/16"x2" Clevis Pin
20	4800110	2	1/8"x3/4" Cotter Key
21	1100169	2	50 Chain 105 Links Standard
22	1100059	2	#50 Chain Connector
23	1100168	2	2050 Chain 71 Links
24	1100111	2	2050 Connector Link
25	4800013	8	5/16"x1" Grade 5 Bolt
26	4800142	6	3/8"x1-3/4" Grade 5 Bolt
27	4800053	2	3/8"x1" Carriage Bolt
28	4800168	2	3/8"x1-3/4" Carriage Bolt
29	4800167	4	3/8"x1-1/4" Socket Head Screw
30	5000001	2	3/8" Flat Washer
31	5000019	18	3/8" Lock Washer
32	4900002	18	3/8" NC Nut
33	4800114	4	1/2"x2" Grade 5 Bolt
34	4800334	2	1/2"x2" Carriage Bolt
35	5000004	10	1/2" Flat Washer
36	5000006	3	1/2" Lock Washer
37	4900001	3	1/2" NC Nut
			OPTIONS
38	7500382	1	Acre Counter
			HIGH SPEED DRIVE
13	1000146	1	5013 Sprocket
			LOW SPEED DRIVE
13	1000145	1	5026 Sprocket
39	1000039	2	5015 1/2" Bore Idler
40	4900002	2	1/2"x2" Grade 5 Bolt
41	5000004	8	1/2" Flat Washer
42	5000006	2	1/2" Lock Washer
43	4900001	2	1/2" Nut
44	4900003	4	5/16" NC Nut

SEED CUP 51



ITEM	PART NO.	QTY.	DESCRIPTION
1	7500363	1	Spring Bracket
2	6100050	1	Spring
3	7500364	2	Bushing
4	7500365	1	Rear Flap
5	7500366	1	Fluted Roller
6	7500367	1	Body
7	7500368	1	Slide
8	7500369	1	Front Piece
9	7500409	1	Cup
10	2000809	1	1" Shaft Collar
11	4800234	1	5/16"x1/2" Set Screw
12	8900126	1	Seed Cup Complete

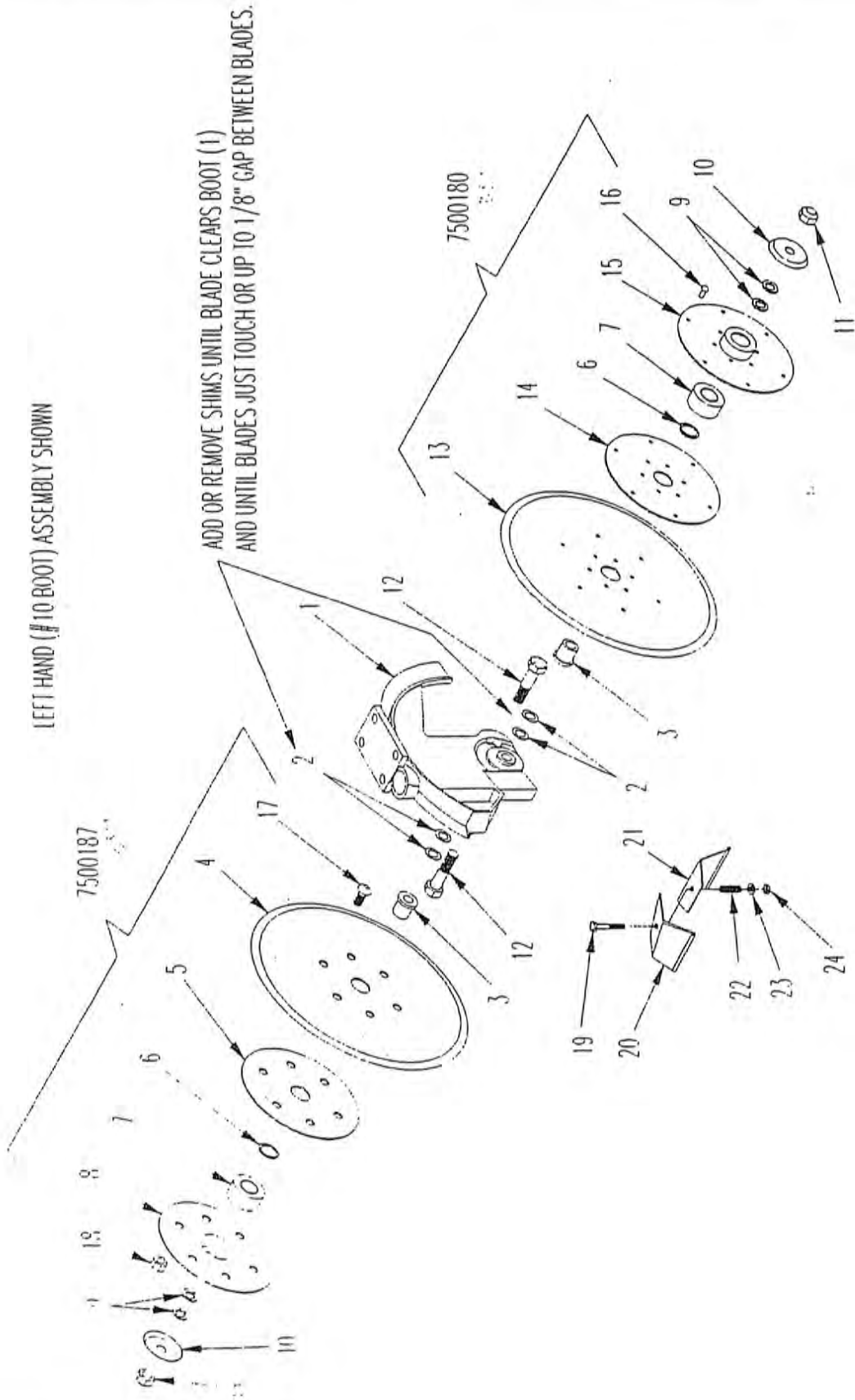
52 RUN



ITEM	PART NO.	QTY.	DESCRIPTION	ITEM	PART NO.	QTY.	DESCRIPTION
1	8900031	1	Run Front Frame	53	4800096	1	5/8"x6" Grade 5 Bolt
2	4800218	4	5/8"x5-1/2" Grade 5 Bolt				Bolt
3	7500376	10	1-1/4"ODx1"ID Connex Bushing	54	4800010	1	5/8"x2" Grade 5 Bolt
4	8900078	5	1-1/4"OD Spacer x 2-1/8" Long				Bolt
5	4900012	6	5/8" Lock Nut				
6	7500351	1	Top Parallel Link				
7	7500352	1	Bottom Parallel Link				
8	7500354	2	Cast Bushing				
9	4800013	2	5/16"x1" Grade 5 Bolt				
10	4900011	3	5/16" Lock Nut				
11	7500353	1	Spring Hook				
12	4800071	1	5/16"x1-1/4" Grade 5 Bolt				
13	8900035	1	Top Spring Pivot				
14	8900083	1	Run Spring Top Spacer				
15	4800032	2	5/8"x5" Grade 5 Bolt				
16	7500113	2	Screw Plug				
17	6100051	1	Run Spring				
	6100052	1	Optional Heavy Spring				
18	8900036	1	Bottom Spring Pivot				
19	5000002	2	5/8" Flat Washer				
20	5000003	3	5/8" Lock Washer				
21	4800079	1	5/8"x2-1/2" Grade 5 Bolt				
22	5000050	1	2"ODx11/16"IDx1/4" Washer				
23	7500375	5	1" ODx7 GAx4.313" Bushing				
24	7500097	1	Hose				
25	7500098	2	Clamp				
26	4800114	1	1/2"x2" Grade 5 Bolt				
27	5000006	1	1/2" Lock Washer				
28	5000004	1	1/2" Flat Washer				
29	8900081	1	Adjustment Guide				
30	6100031	1	Spring				
31	8900033	1	Adjustment Handle				
32	4800003	4	3/8"x1" Grade 5 Bolt				
33	7500357	1	Adjustment Plate				
34	8900129	1	Depth Adjustment Arm				
35	8900001	1	2x13 Rubber Frame				
36	8900080	1	Run Spring Rod				
37	4800120	2	3/16"x1-3/4" Cotter Pin				
38	4800030	1	5/8"x2" Clevis Pin				
39	4800123	1	1/8" Cotter Key				
40	6100036	1	Pull Spring				
41	8900032	1	Run Main Frame				
42	8900034	1	Press Wheel Mount				
43	4900023	4	3/8" Lock Nut				
44	4800018	4	1/2"x1-1/4" Grade 5 Bolt				
45	4900014	4	1/2" Lock Nut				
46	7500359	1	Plastic Cap				
47	2600015	1	Tire				
48	2800028	2	Wheel Halves				
49	2000039	1	Water Pump Bearing (Groove Type)				
50	4800280	6	1/4"x1-3/4" Whiz Lock Flange Screw				
51	4800250	1	3/8"x3/4" SQ Head Set Screw				
52	49000236	1	3/8" Jam Nut				

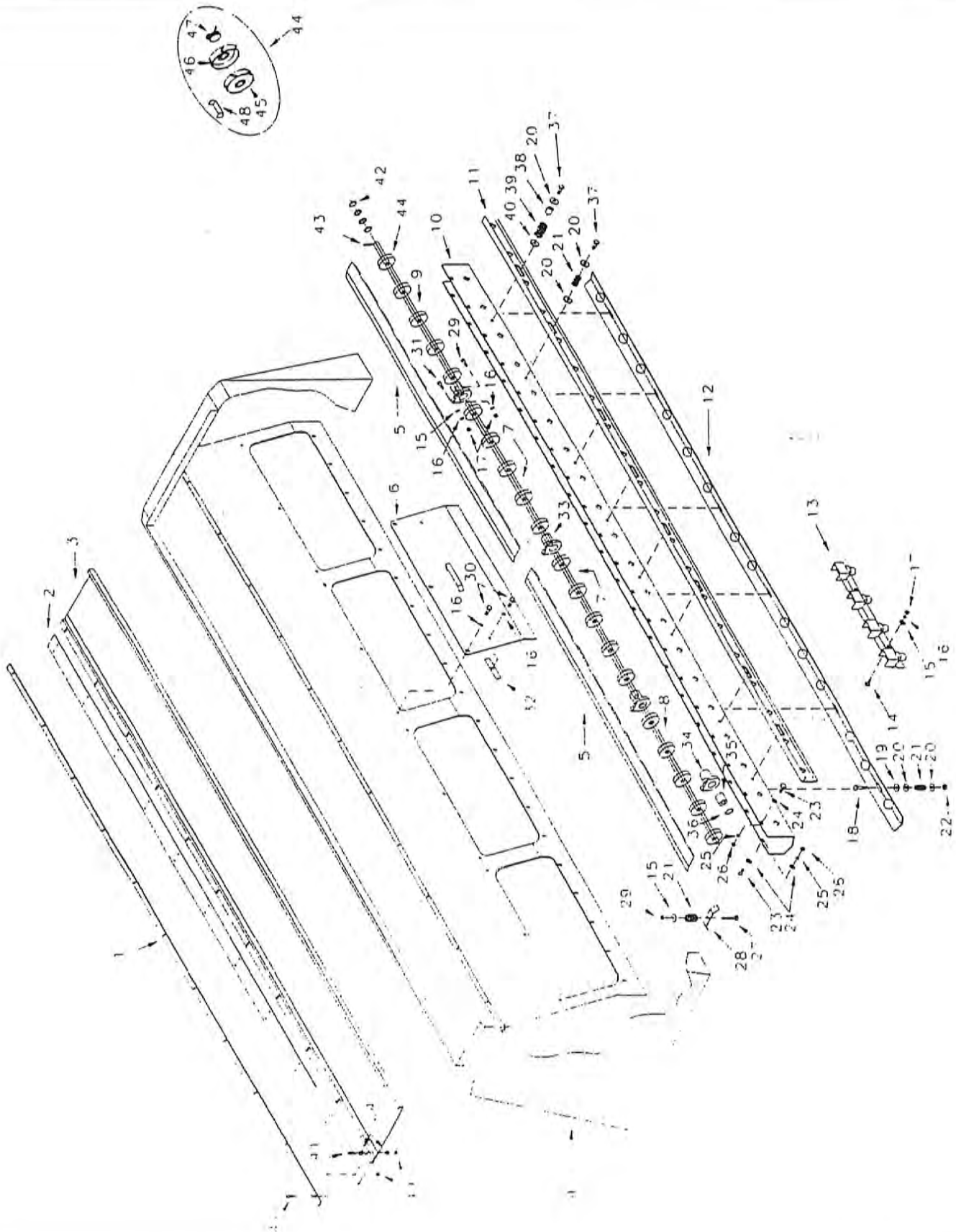
54 COULTER AND DISK

LEFT HAND (#10 BOOT) ASSEMBLY SHOWN



ADD OR REMOVE SHIMS UNTIL BLADE CLEARS BOOT (1) AND UNTIL BLADES JUST TOUCH OR UP TO 1/8" GAP BETWEEN BLADES.

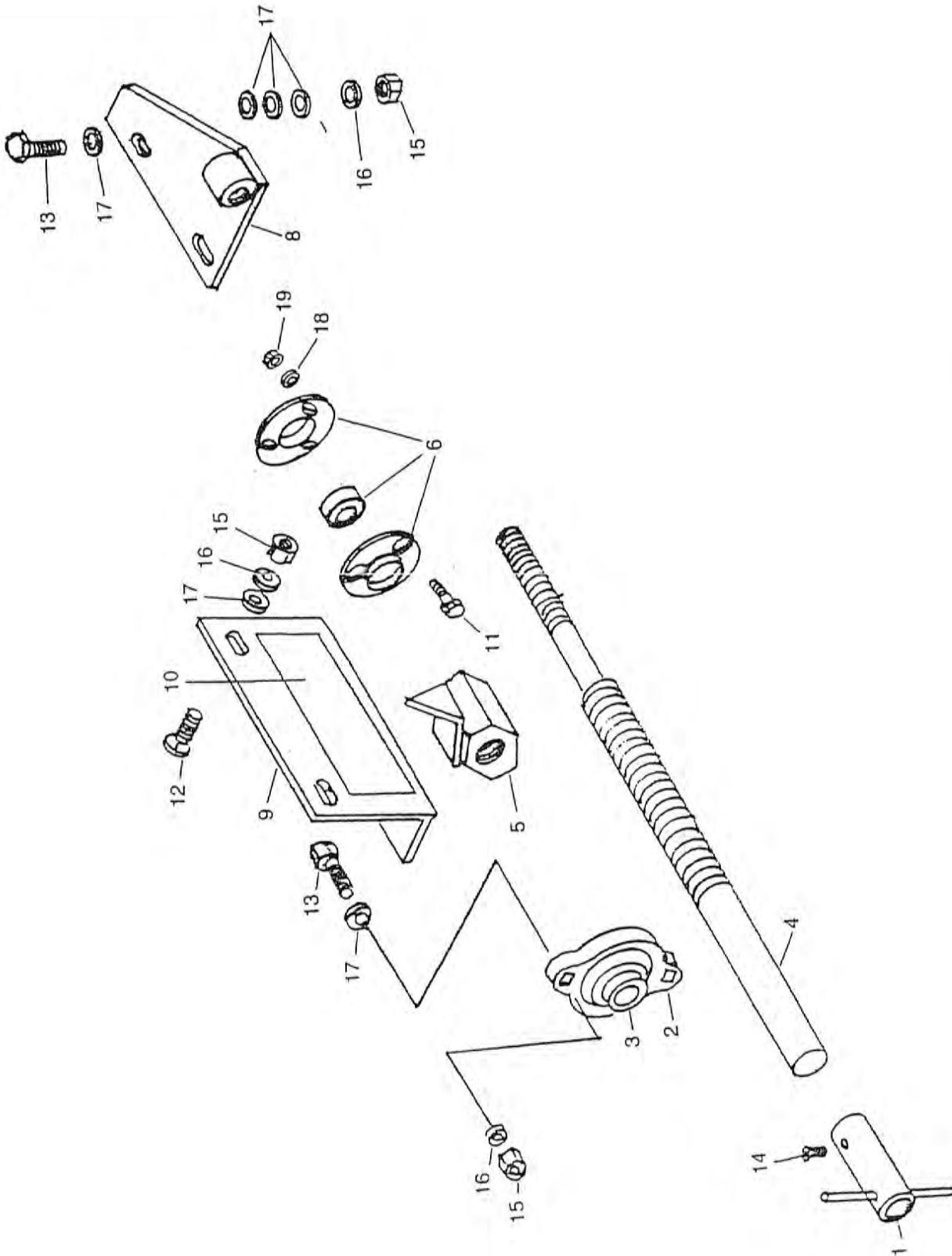
56 FERTILIZER OPTION



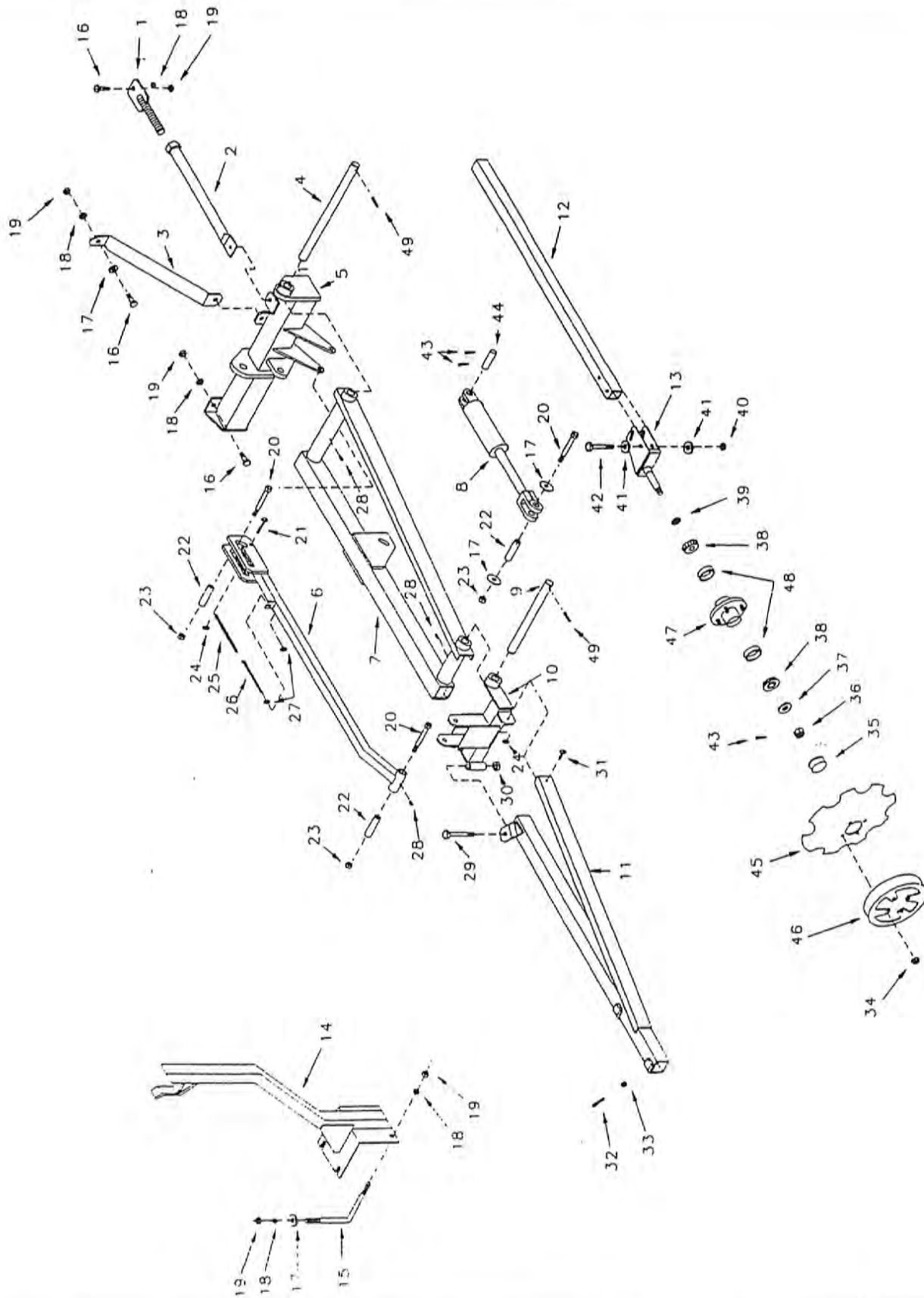
FERTILIZER OPTION 57

ITEM	PART NO.	QTY.	DESCRIPTION
1	8900910	2	1/4"x1" Hinge Strap
2	8900909	2	1/8"x2-3/4" Hinge Belting
3	8900903	2	Fertilizer Tank Cover
4	8900063	1	RH Tank Weldment
4A	8900063	1	LH Tank Weldment (Not Shown)
5	8900907	4	Feed Wheel Cover
6	8900902	8	Tank Window Cover
7	8900913	4	5/8"x33-1/8" Shaft
8	8900912	2	5/8"x31-1/2" Shaft
9	8900914	2	5/8"x35" Shaft
10	8900905	1	RH Fertilizer Trough
10A	8900904	1	LH Fertilizer Trough (Not Shown)
11	8900911	2	Control Plate
12	8900906	2	Clean Out Plate
13	8900901	10	Cup Mount Strip
14	4800053	28	3/8"x1" Carriage Bolt
15	5000001	50	3/8" Flat Washer
16	5000019	60	3/8" Lock Washer
17	4900002	20	3/8" Lock Washer
18	4800007	12	1/2"x2" Grade 5 Bolt
19	8400016	12	1/2" Flat Washer w/40° Brake
20	5000004	48	1/2" Flat Washer
21	6100002	26	Spring
22	4900014	28	1/2" Lock Nut
23	4800008	80	5/16"x3/4" Grade 5 Bolt
24	5000023	164	5/16" Flat Washer
25	5000022	80	5/16" Lock Washer
26	4900003	80	5/16" Hex Nut
27	4800156	6	3/8"x3" Grade 5 Bolt
28	8400011	6	Feed Wheel Cover Hold Down
29	4900030	6	3/8" Plastic Insert Lock Nut
30	4800003	40	3/8"x1" Grade 5 Bolt
31	4800012	8	3/8"x1-1/4" Carriage Bolt
32	8900908	16	Tank Cover Strap
33	7500110	6	Cast Bracket w/Bearing Complete
34	7500108	2	Cast Bracket
35	7500109	2	Steel Bearing w/Hole
36	5000036	8	Retainer Washer
37	4800082	16	1/2"x1-1/2" Grade 5 Bolt
38	8400007	8	Control Plate Guide
39	6100031	8	Control Plate Guide Spring
40	5000002	8	Guide Washer
41	4800013	44	5/16"x1" Grade 5 Bolt
42	5000027	10	Washer, 1-3/8"ODx7/8"ID
43	4800044	2	3/16"x1-1/2" Cotter Key
44	7500106	40	Feed Wheel Complete
45	7500007	40	Feed Wheel Left Half (Marked L)
46	7500008	40	Feed Wheel Right Half (Marked R)
47	7500107	40	Hose Clamp
48	7400066	160	Retainer Clip
49	4900011	44	5/16" Top Lock Nut
50	4800169	2	1/4"x1-1/8" Rolled Pin

58 FERTILIZER SETTING ASSEMBLY



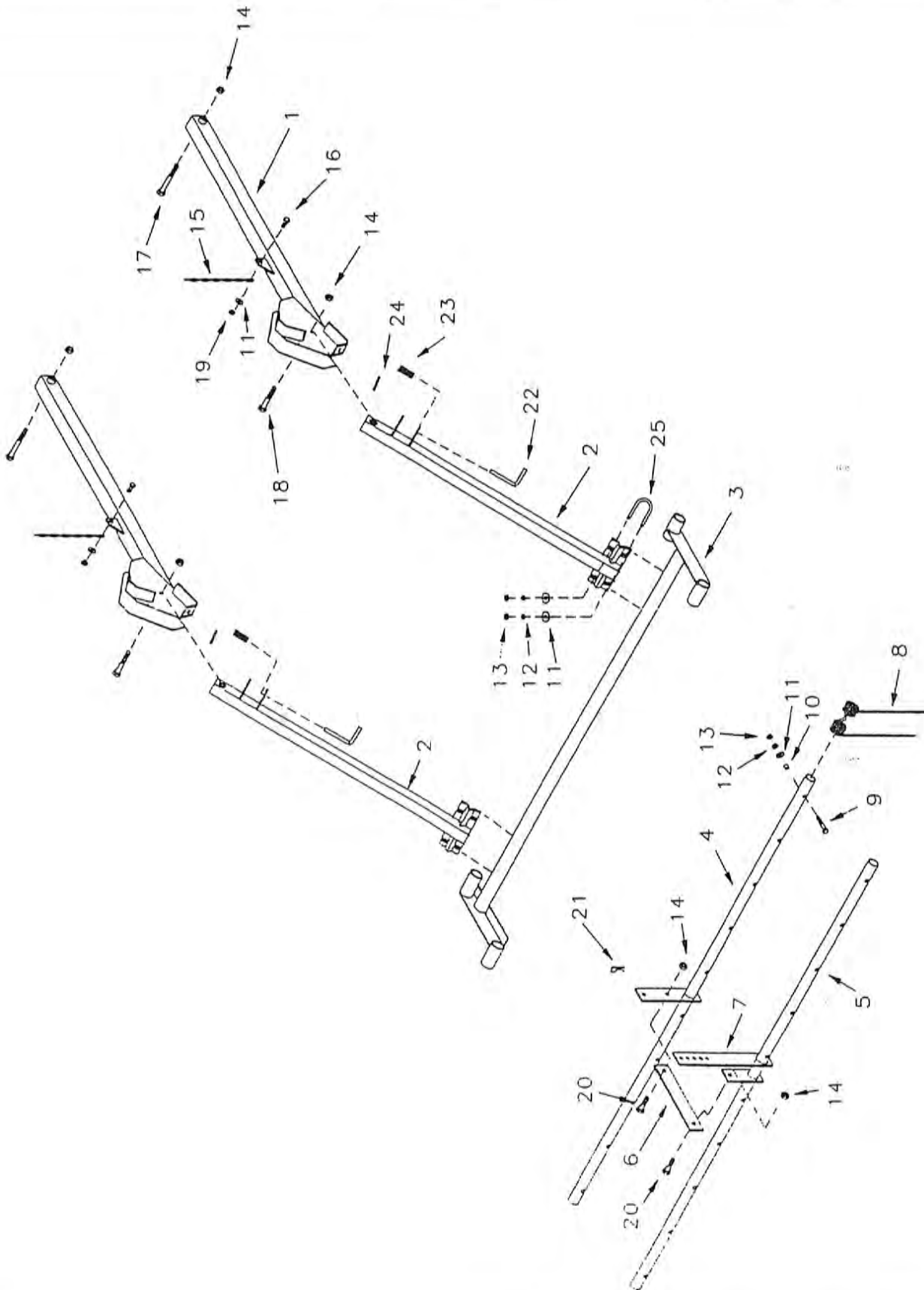
60 MARKER OPTION



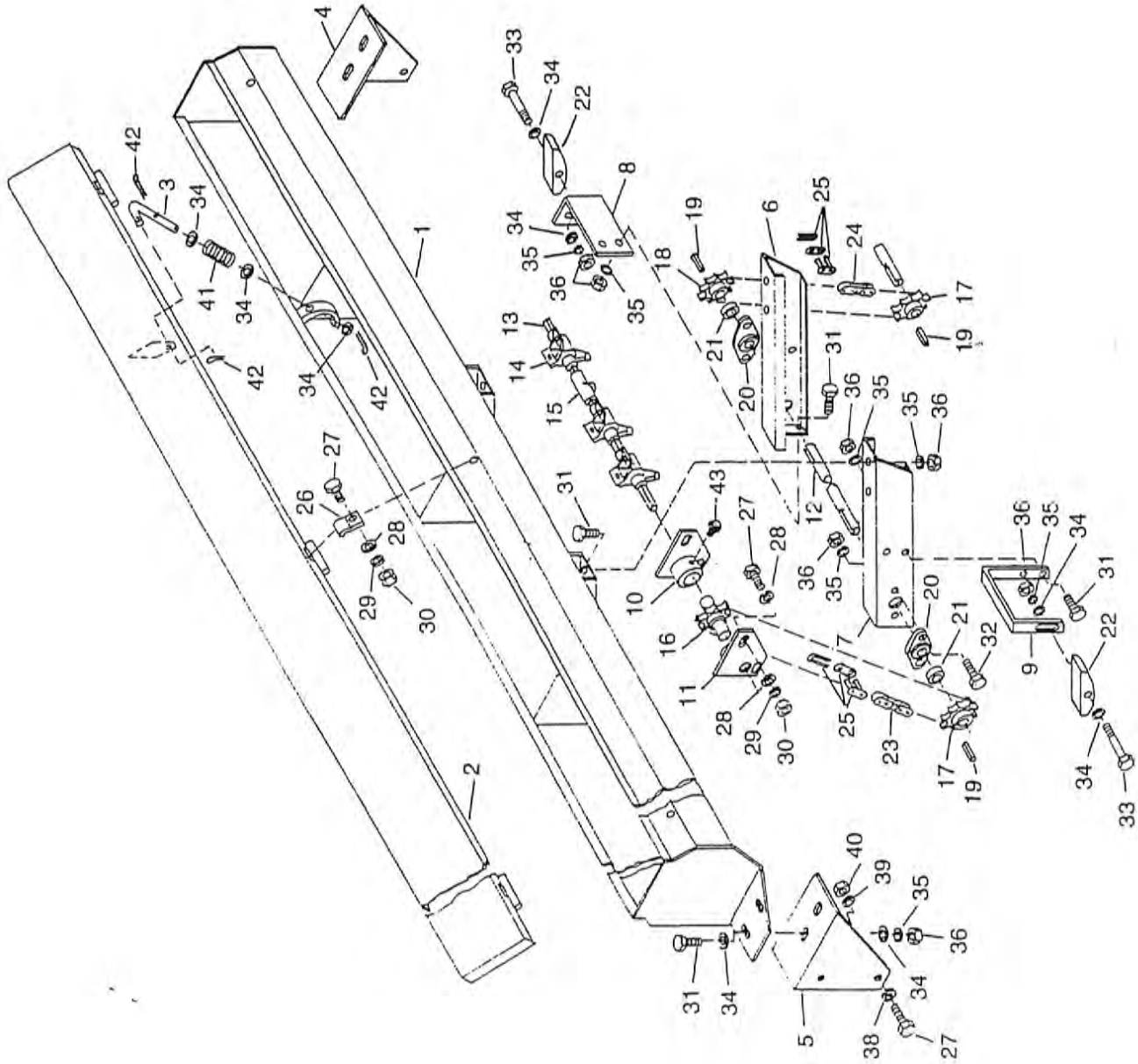
MARKER OPTION 61

ITEM	PART NO.	QTY.	DESCRIPTION
1	8900612	2	Turnbuckle Screw
2	8900613	2	Turnbuckle Pipe
3	8900620	2	24-1/2" Offset Brace Pipe
4	8900614	2	21" Hinge Pin
5	8900601	1	Anchor RH
5A	8900602	1	Anchor LH (Not Shown)
6	8900606	2	Control Arm
7	8900604	1	Inner Arm RH
7A	8900603	1	Inner Arm LH (Not Shown)
8	4100114	2	2-1/2"x8" Cylinder
9	8900615	2	15-1/2" Hinge Pin
10	8900608	1	Knuckle Rh
10A	8900607	1	Knuckle LH (Not Shown)
11	8900609	2	Outer Arm
12	8900617	2	Width Adjustment Tube
13	8900610	2	Marker Blade Spindle
14	8900605	2	Marker Cradle
15	8900619	4	5/8"x8-1/2" ID L-Bolt
16	4800106	12	5/8"x1-1/2" Grade 5 Bolt
17	5000002	12	5/8" Flat Washer
18	5000003	20	5/8" Lock Washer
19	4900005	20	5/8" NC Hex Nut
20	4800218	6	5/8"x5-1/2" Grade 5 Bolt
21	4800156	3	3/8"x3" Grade 5 Bolt
22	8900008	6	1"ODx7 Gagex4-1/2" Bushing
23	4900012	6	5/8" Lock Nut
24	4900023	6	3/8" Lock Nut
25	6100056	2	Pull Spring
26	4800304	2	3/8"x6-1/2" Spade Bolt
27	4900002	4	3/8" NC Hex Nut
28	3800083	6	1/4" NF Straight Zerk
29	4800139	2	3/4"x4-1/2" Grade 5 Bolt
30	4900013	2	3/4" Lock Nut
31	4800098	2	3/8"x1-1/4" Grade 5 Bolt
32	4800339	4	1/2"x2" Square Head Set Screw
33	4900001	4	1/2" NC Hex Nut
34	4900018	8	1/2" NF Flange Nut
35	2900037	2	Dust Cap
36	2900036	2	Nut
37	2900035	2	Washer
38	2900032	4	Bearing
39	2900031	2	Seal
40	4900014	4	1/2" Lock Nut
41	5000004	8	1/2" Flat Washer
42	4800135	4	1/2"x3-1/2" Grade 5 Bolt
43	4800050	6	3/16"x1-1/2" Cotter Key
44	4100087	2	1"x3-1/2" Cylinder Pin
45	7500371	2	Notched Disk Blade
46	8900611	2	Depth Band
47	2900034	2	Hub
48	2900033	4	Cup
49	4800022	4	3/8"x2" Filled Pin

62 HARROW OPTION



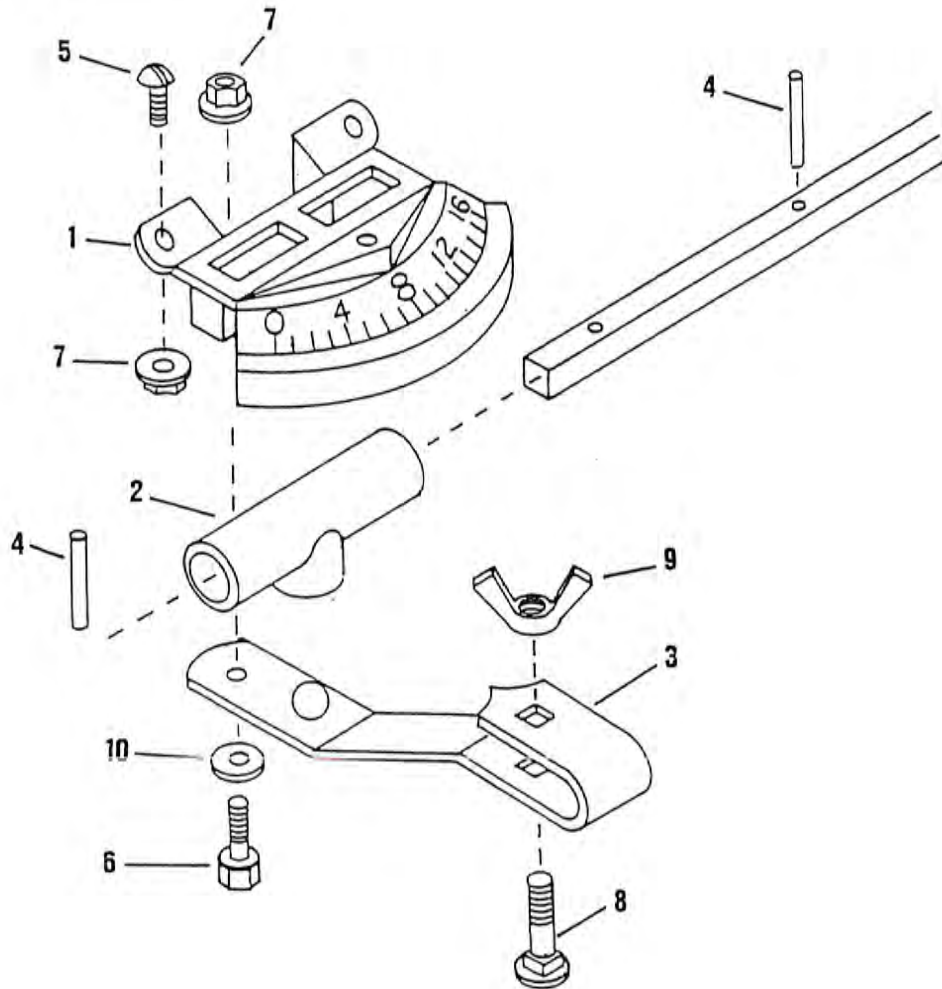
64 LEGUME BOX OPTION



LEGUME BOX OPTION 65

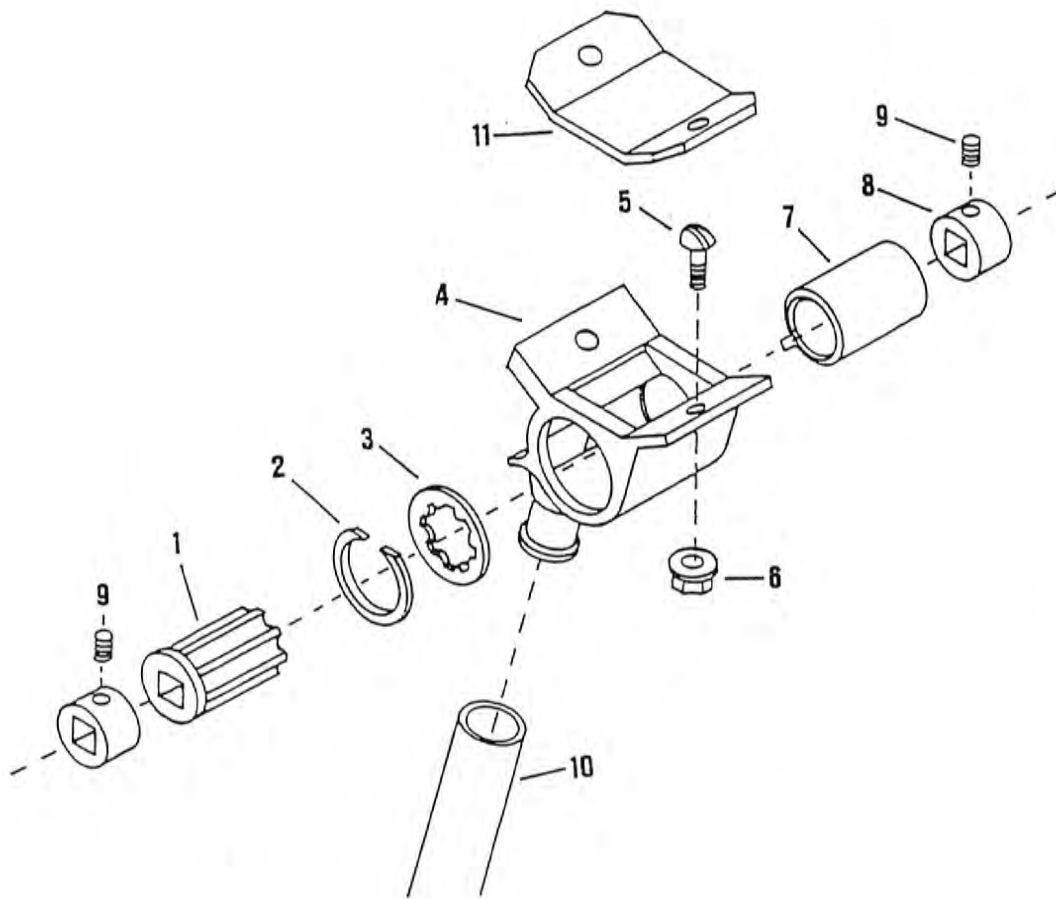
ITEM	PART NO.	QTY.	DESCRIPTION
1	8900803	2	Legume Box
2	8900804	2	Legume Box Cover
3	8700006	4	Legume Box Cover Spring Rod
4	8900807	2	Mounting Bracket LH
5	8900808	2	Mounting Bracket RH
6	8900801	2	Bearing Mount LH
7	8900802	2	Bearing Mount RH
8	8900809	2	Primary Idler Bracket
9	8900810	2	Secondary Idler Bracket
10	8900806	2	Bearing RH
11	8900805	2	Bearing LH
12	8900811	2	1"x35" Shaft
13	8900813	2	3/8"x122" Shaft
14			Cup Assembly (See Page 67)
15	7500184	2	Shifter Spool
16	8700010	2	Sprocket 17 Tooth
17	1000112	4	40B15 Sprocket
18	1000111	2	40B17 Sprocket
19	6200010	6	1/4" SQx1" Key
20	2000310	4	1" Flange Bearing
21	2000304	4	1" Locking Collar
22	2000016	4	Wood Block Idler
23	1100177	2	#40 Chain 37 Links
24	1100178	2	#40 Chain 28 Links
25	1100135	4	#40 Connector
26	8700014	16	Hinge
27	4800013	16	5/16"x1" Grade 5 Bolt
28	5000023	24	5/16" Flat Washer
29	5000022	16	5/16" Lock Washer
30	4900003	16	5/16" NC Nut
31	4800003	24	3/8"x1" Grade 5 Bolt
32	4800034	8	3/8"x1-1/2" Grade 5 Bolt
33	4800029	4	3/8"x2-1/2" Grade 5 Bolt
34	5000001	36	3/8" Flat Washer
35	5000019	32	3/8" Lock Washer
36	4900002	32	3/8" NC Nut
37	4800082	8	1/2"x1" Grade 5 Bolt
38	5000004	8	1/2" Flat Washer
39	5000006	8	1/2" Lock Washer
40	4900001	8	1/2" NC Nut
41	6100002	4	Spring
42	3800127	12	1/8"x1" Cotter Key
43	3800082	4	1/4" Straight Zerk

66 SEED INDEX ASSEMBLY LEGUME BOX



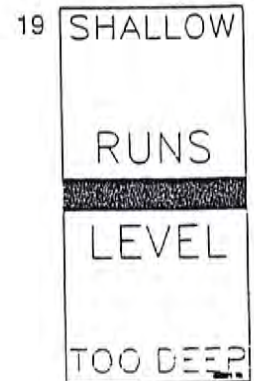
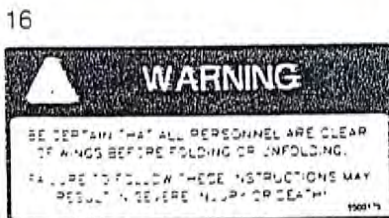
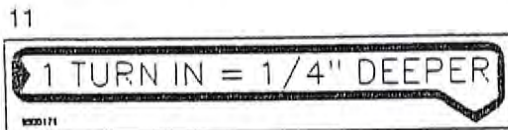
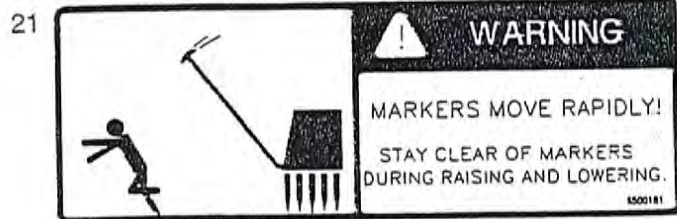
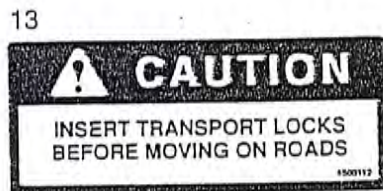
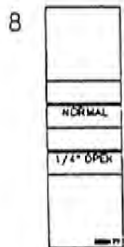
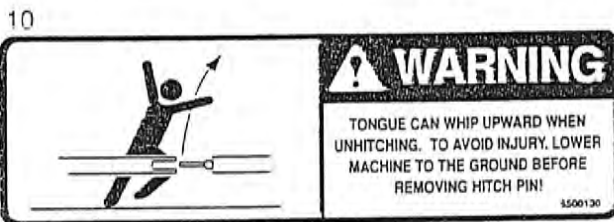
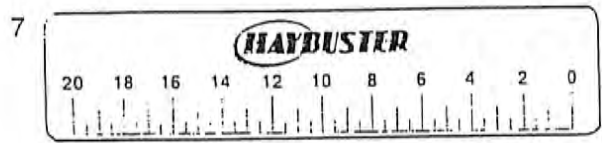
ITEM	PART NO.	QTY.	DESCRIPTION
1	7500183	1	Seed Index Meter
2	7500184	1	Shifter Spool
3	7500185	1	Shifter Arm
4	4800212	2	Rolled Pin 5/32"x3/4"
5	4800213	3	Cap Screw 1/4"x5/8" Pan Head Machine Screw
6	4800024	1	1/4"x " Bolt
7	4900040	4	1/4" Flange Nut
8	4800214	1	Carriage Bolt 1/4"x1"
9	4900041	1	1/4" Wing Nut
10	5000035	1	1/4" Flat Washer

CUP ASSEMBLY LEGUME BOX 67

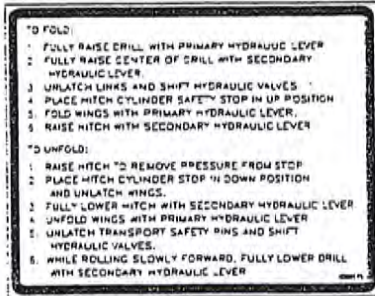


ITEM	PART NO.	QTY.	DESCRIPTION
1	7500177	1	Feed Roller
2	7500178	1	Snap Ring
3	7500179	1	Feed Roller Washer
4	7500180	1	Feed Cup w/Washer & Ring
5	4800154	2	1/4"x1/2" Flat Head Slotted Screw
6	4900040	2	1/4" Flange Nut
7	7500181	1	Gate
8	7500182	2	Collar
9	4800211	2	Set Screw 1/4"x5/16"
10	3700129	1	5/8" I.D. Hose x 22"
11	8700016	1	Plug for 10" Spacing

68 DECALS



15



22



23



18



17

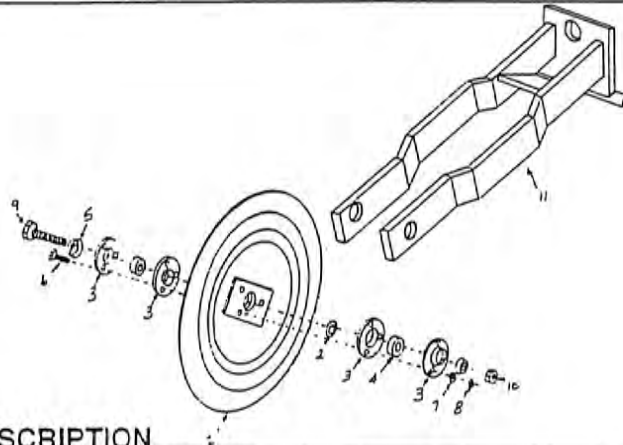


20



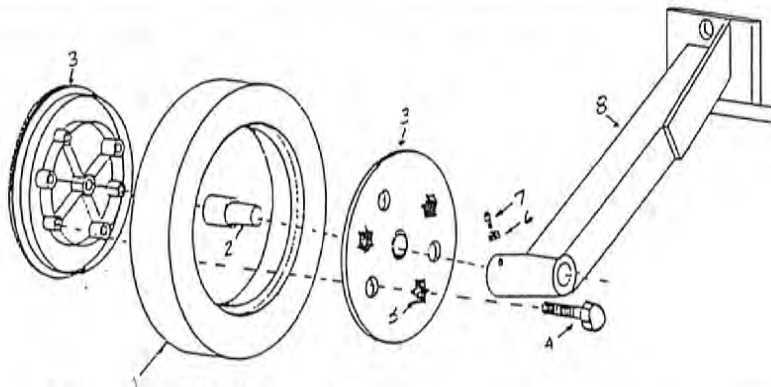
ITEM	PART NO.	QTY.	DESCRIPTION
1	6500020	2	Haybuster w/Sunburst
2	6500170	2	2575
3	6500060	2	Avoid Making Sharp Turns
4	6500042	2	Keep Wheel Bolts Tight
5	6500163	2	Disc Blades Sharp
6	6500040	2	Keep All Shields In Place
7	6500164	2	Calibration For 2575
8	6500177	4	Cup Flap Indication
9	6500180	4	Cyl. Stops Before Servicing
10	6500131	2	Tongue Can Whip Upward
11	6500176	1	One Turn In = 1/4" Deeper
12	6500101	2	No Riders
13	6500112	2	Caution Insert Transport Locks
14	6500172	2	Transport Warning For 2575
15	6500175	1	Folding Instructions For 2575
16	6500179	3	Warning Before Folding 2575
17	6500173	4	Field Pointer
18	6500174	4	Transport Pointer
19	6500178	1	Runs Level
20	6500102	42 Ft.	Red Double Stripe
21	6500181	2	Warning Markers
22	6500041	1	Warning For Your Protection
23	6500043	2	Warning No Riders

70 PRESS WHEEL OPTION-STEEL PRESS WHEEL FRAME



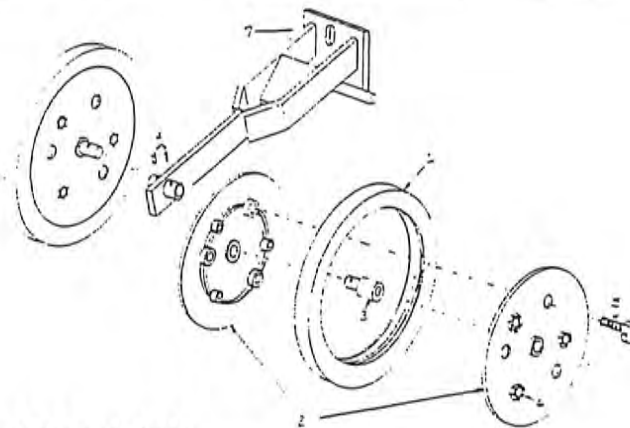
ITEM	PART NO.	QTY.	DESCRIPTION
1	7400165	1	Packer Wheel Steel V
2	5000010	1	1-5/8"x3/4"x.090" Spacer
3	2700006	4	3-Hole Flangette
4	2000004	2	3/4" Bearing
5	7400044	2	Bearing Shield 25/32" ID
6	4800071	3	5/16"x1-1/4" Grade 5 Bolt
7	5000015	3	5/16" Star Washer
8	4900017	3	5/16" Hex Nut
9	4800063	1	3/4"x4" Grade 5 Bolt
10	4900013	1	3/4" Lock Nut
11	8900003	1	Packer Wheel Frame

PRESS WHL. OPTION-ANGLE OFFSET PRESS WHEEL FRAME



ITEM	PART NO.	QTY.	DESCRIPTION
1	2600015	1	2"X13" Tire
2	2000039	1	Water Pump Bearing (Groove Type)
3	2600608	2	Wheel Half
4	4800280	6	1/4"x1-3/4" Whiz Lock Flange Screw
5	4900009	6	1/4" Hex Nut
6	4900026	1	3/8" Jam Nut
7	4800250	1	3/8"x3/4" Set Screw
8	8900002	1	Packer Wheel Frame LH
9	8900004	1	Packer Wheel Frame RH

PRESS WHEEL OPTION-DUAL-V PRESS WHEEL FRAME 71



ITEM	PART NO.	QTY.	DESCRIPTION
1	2600011	2	1"x12" Rubber Tire
2	2600614	4	Wheel Half
3	2000024	2	Water Pump Bearing
4	4800131	2	1/4"x1" Rolled Pin
5	4800165	12	1/4"x1" Whiz Lock Flange Screw
6	4900009	12	1/4" Hex Nut
7	8900004	1	Dual V Frame

Check local laws regarding movement of wide agricultural equipment on public highways. Laws may require the use of SMV emblems and/or implement mounted warning lights.

CAUTION: Transporting this drill with material in the grain and/or fertilizer hopper can make the drill top heavy. **DO NOT EXCEED 10 MPH** when transporting with material in the hopper. Be extremely careful on slopes, corners, field approaches and other hazards.

CAUTION: Maximum transport speed should not exceed 20 MPH, and should be less where conditions demand.

CAUTION: Tongue weights can exceed 3000 lbs. when drill is empty. Check drawbar rating on your tractor to be certain it is adequate. Never attempt to transport this implement without using a safety chain. The minimum ultimate tensile strength of the safety chain must be 25,000 lbs.

26 PREPARING TO TRANSPORT

FOLDING THE 2575

BE CERTAIN THAT ALL SHIPPING STANDS ARE REMOVED PRIOR TO FOLDING THE DRILL!

1. Be sure all spectators are clear of the drill prior to folding.
2. Place transport safety latch in transport position. The handle should point down. The TRANSPORT decal on the side of the latch indicates the proper direction for the handle.
3. Fully raise the drill with the primary hydraulic lever.
4. Fully raise the center of the drill with the secondary hydraulic lever until the transport latches lock in.
5. Unlatch folding drawlinks by pointing the handle towards the rear drawlinks. The TRANSPORT decal on the side of the latch indicates the proper direction for the handle. Place the hitch cylinder safety stop in the up position. (See page 15.) Push both hydraulic valve knobs in.
6. Fold wings with the primary hydraulic lever.

CAUTION: WINGS MOVE RAPIDLY!

Extend the fold cylinders fully. In this position, latch pins on the wings should be directly over receiving hooks on the cart. (See page 30.) This can be adjusted with the adjusting bolt on front side of fold cylinder.

ALWAYS USE SAFETY STOPS WHEN SERVICING OR MAKING ADJUSTMENTS!

Adjust as necessary.

7. Raise hitch cylinder with secondary hydraulic lever until the safety stop falls in place over the cylinder rod.

UNFOLDING THE 2575

1. Be sure all spectators are clear of the drill before unfolding.
2. Raise hitch with secondary hydraulic lever to remove pressure from safety stop.
3. Place hitch cylinder stop in down position and unlatch the wing transport latches. (See page 15 & 30.)
4. Fully lower hitch cylinder with secondary hydraulic lever. Latch pins on the wings will lift out of the receiving hooks on the cart.
5. Unfold the wings with the primary hydraulic lever.

CAUTION: WINGS WILL UNFOLD RAPIDLY!

6. Shift hydraulic valves by pulling valve knobs out. Reset drawlink latches by pointing the handles towards the tractor. The FIELD decal on the side of the latch indicates the proper direction for the handle.
7. Unlatch transport safety pins.

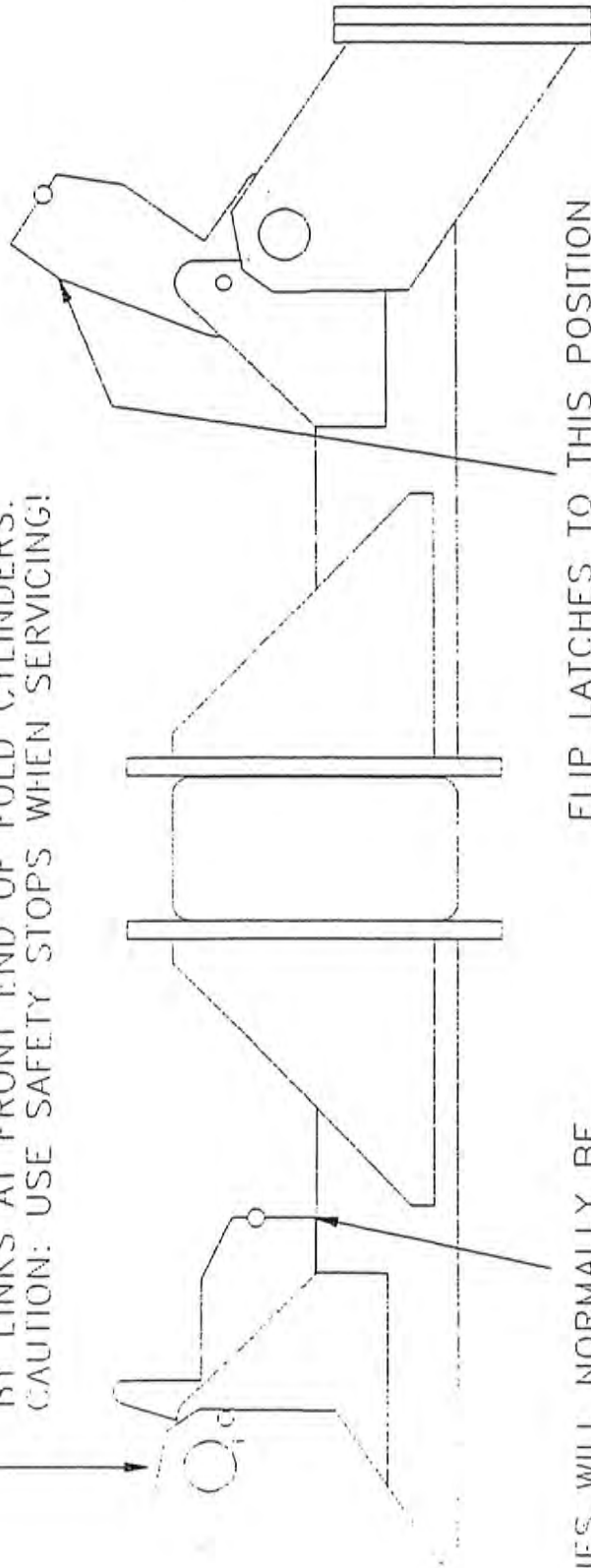
CAUTION: DO NOT FORCE IF THERE IS PRESSURE ON THE PINS. FORCING THE PINS COULD CAUSE SUDDEN MOVEMENT WHEN THE PINS DISENGAGE WHICH COULD INJURE THE OPERATOR.

To remove pressure on pins, raise the cylinders using the secondary lever after the valves are shifted out on the cart.

8. Lower the center of drill with the secondary hydraulic lever while rolling slowly forward. Rolling forward reduces side pressure on wing tires.

WITH FOLD CYLINDERS ARE COMPLETELY EXTENDED
THE PIN SHOULD LINE UP OVER HOOK.

ADJUST BY USING 1 1/4" BOLTS FOUND
BY LINKS AT FRONT END OF FOLD CYLINDERS.
CAUTION: USE SAFETY STOPS WHEN SERVICING!



LATCHES WILL NORMALLY BE
IN THIS POSITION.

FLIP LATCHES TO THIS POSITION
PRIOR TO UNFOLDING THE DRILL.

TRANSPORT HOOKS AND LATCHES

FRONT VIEW



