



HAYBUSTER[®]

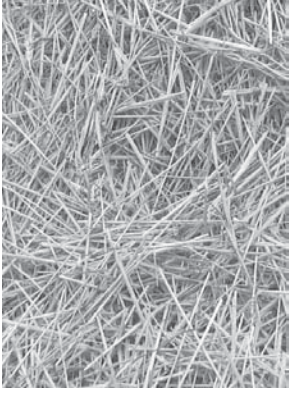
BIG

BALEBUSTER[™]

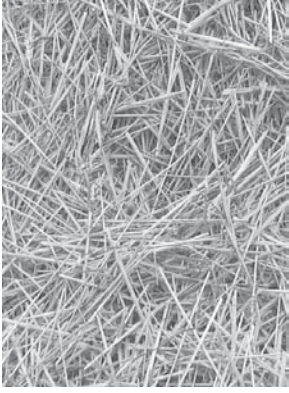
SERIAL NUMBER HI 4395 AND UP

**Operating Instructions
and Parts Reference**





HAYBUSTER[®]
The Innovation Continues





BIG BALEBUSTER™

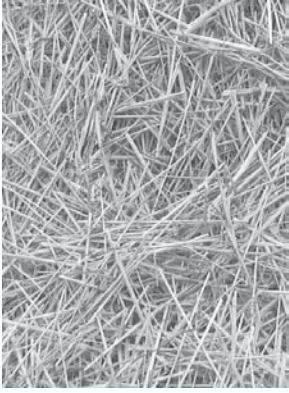
SERIAL NUMBER HI 4395 AND UP

Operating Instructions and Parts Reference

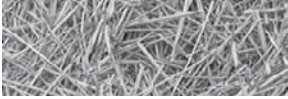
DuraTech Industries International Inc. (DuraTech Industries) has made every effort to assure that this manual completely and accurately describes the operation and maintenance of the BIG BALEBUSTER™ as of the date of publication. DuraTech Industries reserves the right to make updates to the machine from time to time. Even in the event of such updates, you should still find this manual to be appropriate for the safe operation and maintenance of your unit.

This manual, as well as materials provided by component suppliers to DuraTech Industries are all considered to be part of the information package. Every operator is required to read and understand these manuals, and they should be located within easy access for periodic review.

 **DURATECH**® &  are registered trademarks of Duratech Industries International, Inc. BIG BALEBUSTER is a trademark of Duratech Industries International, Inc.



HAYBUSTER[®]
The Innovation Continues



FOREWORD



Foreword

All personnel must read and understand the following sections before operating the *BALEBUSTER™*.

- Section 2, "Dealer Preparation," to verify that the machine has been prepared for use.
- Section 3 which explain normal operation of the machine.
- Foreword and Section 1, important safety information.
- Section 3.2.1, "Pre-Operation Inspection".

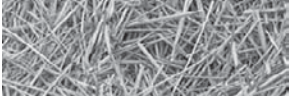
Appropriate use of unit

Your model BIG BALEBUSTER™ is designed to load and shred most types of baled livestock forage. It is designed specifically for use on 6-1/2 ft. diameter round bales weighing up to 1,500 pounds and 5-1/2 feet in length.

To avoid possible damage to the machine and risk of injury to the operator, consult with a DuraTech Industries representative before attempting to shred materials other than livestock forage.

The BALEBUSTER has multiple uses:

- Laying forage windrows in open fields.
- Filling feed bunks - fenceline, circular etc.
- Spreading straw for livestock bedding.
- Spreading forage over perennial plants, such as strawberries, mushrooms, etc.
- Spreading forage over reclaimed land areas.



Operator protection



WARNING: As with all machinery, care needs to be taken in order to insure the safety of the operator and those in the surrounding area.

The OPERATOR IS RESPONSIBLE for the safety of the operator and those in the surrounding area.

Operators of the BALEBUSTER are required to wear head, eye, and ear protection, No loose clothing is allowed.

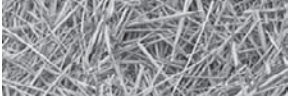


TABLE OF CONTENTS

Part 1: Operating Instructions	1
Introduction	2
Purpose	2
Section 1: Safety	4
1.1 Safety-alert symbols	4
1.2 Operator - personal equipment	6
1.3 Machine safety labels	7
1.4 Shielding	10
1.5 Personal equipment	10
1.6 Safety review	10
1.7 Towing/road transport	12
Section 2: Dealer preparation	13
2.1 Assembly required	13
2.2 Pre-delivery inspection	14
2.3 Machine operation check	14
2.4 BIG BALEBUSTER shipping list	15
Section 3: Machine Operation	16
3.1 Introduction to the machine	16
3.1.2 Operator's station/controls	16
3.1.3 Bale conveyor speed	17
3.1.4 Deflector	17
3.1.5 Stripper plates/screens	18
3.1.6 Rotor	18
3.1.7 Slug bars	19
3.2 Operation	20
3.2.1 Pre-operation inspection	20
3.2.2 Hitching the BALEBUSTER to a tractor	21
3.2.3 Starting the machine	22
3.2.4 Normal shut-down procedure	23
3.2.5 Unhitching the BALEBUSTER from a tractor	23
3.2.6 Loading bales into the BALEBUSTER	24
3.3 Transportation and storage	25
3.3.1 Preparing for storage	25
3.3.2 Removing from storage	26

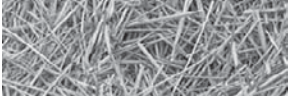
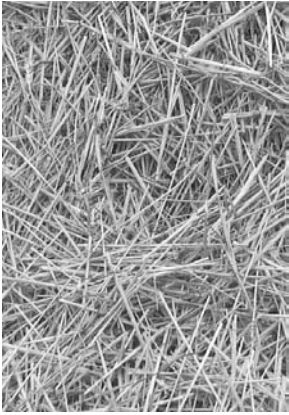


TABLE OF CONTENTS

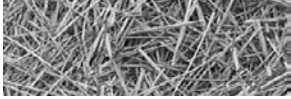
3.4	Adjusting the machine	27
3.4.1	Changing distribution pattern	27
3.4.2	Changing length of cut	27
Section 4: General maintenance		30
4.1	Maintenance and adjustments	30
4.2	Lubrication	31
4.3	Axle, wheels, tires	32
4.4	General appearance	32
Section 5: Troubleshooting		33
Appendix A: Warranty		34
Appendix B: BIG BALEBUSTER Specifications		35
Appendix C: Required For Operation		36
Part 2, Parts Reference		37
	HINGE FRAME ASSEMBLY #1 Ser. No. HI 4395 & UP	38
	HINGE FRAME ASSEMBLY #2 Ser. No. HI 4395 & UP	40
	MAIN FRAME & SWIVEL WHEEL ASSEMBLY Ser. No. HI 4395 & UP	42
	BALE CONVEYOR ASSEMBLY Ser. No. GI 4298 & UP	44
	RACK AND DEFLECTOR ASSEMBLY Ser. No. HI 4395 to 4511	46
	RACK AND DEFLECTOR ASSEMBLY Ser. No. ii 4512 & up	48
	TINES AND TINE FRAME ASSEMBLY Ser. No. 3598 & up	50
	HYDRAULICS PARTS LIST Ser. No. 101 & up	52
	P.T.O. ASSEMBLY PARTS LIST - G AND G MFG.	54
	P.T.O. ASSEMBLY PARTS LIST - Weasler mfg. ser. no. hi 4395 & up	55
	FLOW CONTROL VALVE Ser. No.101 & UP	56
	HYDRAULIC CYLINDER	56
	ORBIT MOTOR Ser. No. 4058 & UP	58
	BALE BUSTER QUICK TATCH Ser. No. HI 4395 & UP	60
	BALEBUSTER DECAL REQUIREMENTS	62
	BALEBUSTER DECAL LOCATIONS	64
256 BIG BALEBUSTER Documentation Comment Form..		65



BIG
BALEBUSTERTM

SERIAL NUMBER HI 4395 AND UP

Part 1:
Operating Instructions



Introduction

Your model BIG BALEBUSTER™ is designed to load and shred most types of baled livestock forage. It is designed specifically for use on 6-1/2 ft. diameter round bales weighing up to 1,500 pounds and 5-1/2 feet in length.

To avoid possible damage to the machine and risk of injury to the operator, consult with a DuraTech Industries representative before attempting to shred materials other than livestock forage.

The BIG BALEBUSTER has multiple uses:

- Laying forage windrows in open fields.
- Filling feed bunks - fenceline, circular etc.
- Spreading straw for livestock bedding.
- Spreading forage over perennial plants, such as strawberries, mushrooms, etc.
- Spreading forage over reclaimed land areas.

Purpose

The purpose of this owner's manual is to explain maintenance requirements and routine adjustments for the most efficient operation of your BIG BALEBUSTER. There is also a trouble shooting section that may help in case of problems in the field. Any information not covered in this manual may be obtained from your dealer.



SPECIAL NOTE: When reference is made as to front, rear, left hand, or right hand of this machine, the reference is always made from standing at the rear end of the machine and looking toward the hitch. Always use serial number and model number when referring to parts or problems. Please obtain your serial number and write it below for your future reference.

MODEL BIG BALEBUSTER

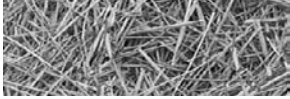
SERIAL NO _____

How to use this manual

Manual organization

This manual is organized into the following parts:

- **Part 1: Operating instructions** explain how to set up, use and maintain the BIG BALEBUSTER.
- **Part 2: Parts reference** contains diagrams of each assembly, with the part number of each part. A key on the facing page contains a description of the part and the quantity used.

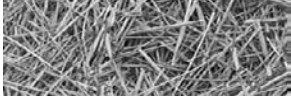


Dealer responsibilities

- Read Section 2, “Dealer Preparation,” and perform the tasks outlined. Also perform a pre-operation inspection as described in Section 3.2.1.
- Upon delivery of the unit to the customer, it is your responsibility to conduct a training session on the safe operation of the unit for the primary operator(s). You must also conduct a “walk-around” inspection of all safety instructional decals on the machine itself. Decals are illustrated in **Part 2: Parts Reference**.
- Complete and return the Warranty Registration Card. Receipt of this form is required to activate the warranty. **Appendix A** provides details of the warranty.

Operator responsibilities

- Operator is responsible for his safety.
- Operator is also responsible for safety of others near the machine.
- Review Section 2, “Dealer Preparation,” to verify that the machine has been prepared for use.
- Thoroughly review sections 1 and 3, which explain normal operation of the machine, and section 4, which explain maintenance requirements.
- Note the important safety information in the Foreword and in Section 1, “Safety.”
- Keep copies of all manuals in a readily accessible location for future reference.



Section 1: Safety

The safety of the operator is of great importance to DuraTech Industries/Haybuster. We have provided decals, shield and other safety features to aid you in using your machine safely. In addition, we ask you to be a careful operator who will properly use and service your Haybuster equipment.



WARNING: FAILURE TO COMPLY WITH SAFETY INSTRUCTIONS THAT FOLLOW WITHIN THIS MANUAL COULD RESULT IN SEVERE PERSONAL INJURY OR DEATH. BEFORE ATTEMPTING TO OPERATE THIS MACHINE, CAREFULLY READ ALL INSTRUCTIONS CONTAINED WITHIN THIS MANUAL. ALSO READ THE INSTRUCTION MANUAL PROVIDED WITH YOUR TRACTOR.

THIS MACHINE IS NOT TO BE USED FOR ANY PURPOSE OTHER THAN THOSE EXPLAINED IN THE OPERATOR'S MANUAL, ADVERTISING LITERATURE OR OTHER DURATECH INDUSTRIES WRITTEN MATERIAL PERTAINING TO THE BIG BALEBUSTER.

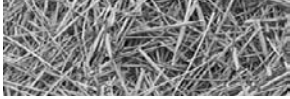
1.1 Safety-alert symbols

Decals are illustrated in **Part 2: Parts Reference**.

The safety decals located on your machine contain important and useful information that will help you operate your equipment safely.

To assure that all decals remain in place and in good condition, follow the instructions below:

- Keep decals clean. Use soap and water - not mineral spirits, adhesive cleaners and other similar cleaners that will damage the decal.
- Replace all damaged or missing decals. When attaching decals, surface temperature of the machine must be at least 40° F (5° C). The surface must be also be clean and dry.
- When replacing a machine component to which a decal is attached, be sure to also replace the decal.



DuraTech Industries uses industry accepted ANSI or ASAE standards in labeling its products for safety and operational characteristics.



Safety-Alert Symbol

Read and recognize safety information. Be alert to the potential for personal injury when you see this safety-alert symbol.

DANGER: Indicates an imminently hazardous situation that, if not avoided, will result in death or serious injury. This signal word is to be limited to the most extreme situations, typically for machine components that, for functional purposes, cannot be guarded.

WARNING: Indicates a potentially hazardous situation that, if not avoided, could result in death or serious injury, and includes hazards that are exposed when guards are removed. It may also be used to alert against unsafe practices.

CAUTION: Indicates a potentially hazardous situation that, if not avoided, may result in minor or moderate injury. It may also be used to alert against unsafe practices.

This manual uses the symbols to the right to denote important safety instructions and information.

The **DANGER**, **WARNING** and **CAUTION** symbols are used to denote conditions as stated in the text above. Furthermore, the text dealing with these situations is surrounded by a box with a white background, will begin with **DANGER**, **WARNING**, or **CAUTION**.

The **INFORMATION** symbol is used to denote important information or notes in regards to maintenance and use of the machine. The text for this information is surrounded by a box with a light grey background, and will begin with either **IMPORTANT** or **NOTE**.



DANGER:
Signal word - White Lettering/Red Background
Safety Alert Symbol - White Triangle/Red Exclamation Point

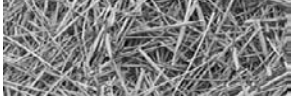


WARNING:
Signal word - Black Lettering/Orange Background
Safety Alert Symbol - Black Triangle/Orange Exclamation Point



CAUTION:
Signal word - Black Lettering/Yellow Background
Safety Alert Symbol - Black Triangle/Yellow Exclamation Point





1.2 Operator - personal equipment

THE OPERATOR

Physical Condition

You must be in good physical condition and mental health and not under the influence of any substance (drugs, alcohol) which might impair vision, dexterity or judgment.

Do not operate a **BIG BALEBUSTER** when you are fatigued. Be alert - If you get tired while operating your **BIG BALEBUSTER**, take a break. Fatigue may result in loss of control. Working with any farm equipment can be strenuous. If you have any condition that might be aggravated by strenuous work, check with your doctor before operating

Proper Clothing



Clothing must be sturdy and snug-fitting, but allow complete freedom of movement. Avoid loosefitting jackets, scarfs, neckties, jewelry, flared or cuffed pants, unconfined long hair or anything that could become entangled with the machine.



Protect your hands with gloves when handling flail and sections. Heavyduty, nonslip gloves improve your grip and protect your hands.



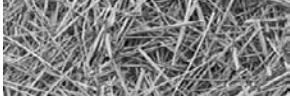
Good footing is most important. Wear sturdy boots with nonslip soles. Steel-toed safety boots are recommended.



To reduce the risk of injury to your eyes never operate a **BIG BALEBUSTER** unless wearing goggles or properly fitted safety glasses with adequate top and side protection.




Tractor noise may damage your hearing. Always wear sound barriers (ear plugs or ear muffers) to protect your hearing. Continual and regular users should have their hearing checked regularly.



1.3 Machine safety labels


The safety decals located on your machine contain important information that will help you operate your equipment. Become familiar with the decals and their locations.

 **DANGER:** FLYING HAY, ROCKS, AND OTHER OBJECTS THROWN BY MACHINE.

STAY CLEAR OF DISCHARGE SIDE OF MACHINE UNLESS OPERATOR HAS STOPPED TRACTOR ENGINE AND MACHINE HAS STOPPED ROTATING. FAILURE TO FOLLOW THESE INSTRUCTIONS MAY RESULT IN SEVERE PERSONAL INJURY OR DEATH.




6500034

 **DANGER:** ROTATING FLAILS CAN KILL OR DISMEMBER

KEEP CLEAR OF MACHINE UNTIL POWER TAKE-OFF HAS BEEN DISENGAGED, TRACTOR ENGINE SHUT OFF AND FLAIL ROTATION STOPPED



6500035


 **DANGER:** ROTATING DRIVELINE, CONTACT CAN CAUSE DEATH, KEEP AWAY!

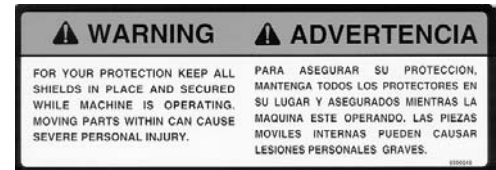
DO NOT OPERATE WITHOUT

- ALL DRIVELINE GUARDS, TRACTOR AND EQUIPMENT SHIELDS IN PLACE
- DRIVELINES SECURELY ATTACHED AT BOTH ENDS
- DRIVELINE GUARDS THAT TURN FREELY ON DRIVELINE

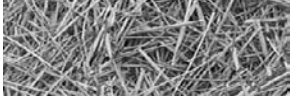


6500085

 **WARNING:** FOR YOUR PROTECTION KEEP ALL SHIELDS IN PLACE AND SECURED WHILE MACHINE IS OPERATING MOVING PARTS WITHIN CAN CAUSE SEVERE PERSONAL INJURY.





6500040



WARNING: FOR YOUR PROTECTION AND PROTECTION OF OTHERS, PRACTICE THE FOLLOWING SAFETY RULES.



1. Read and understand operators manual before operating machine.
2. Place all controls in neutral, stop engine, remove ignition key, lock out power source, and wait for all motion to stop before servicing, adjusting, repairing, or unplugging.
3. Read and understand all decals on machine for your safety.
4. Keep all shields in place while machine is in operation.
5. Keep hands, feet, hair, and clothing away from moving parts.
6. Keep others away from machine while in operation.
7. Install safety locks before transporting, or working beneath components.
8. Do not allow riders at any time.
9. Do not leave machine unattended with engine running.
10. Keep all hydraulic lines, couplings, and fittings free of leaks during operation.
11. Keep away from overhead electrical lines. Electrocutation can occur without direct contact.
12. Review safety instructions periodically.

 WARNING FOR YOUR PROTECTION AND SAFETY OF OTHERS, FOLLOW THESE SAFETY RULES.	 ADVERTENCIA PARA SU PROTECCIÓN Y LA SEGURIDAD DE OTROS, OBSERVE ESTAS NORMAS DE SEGURIDAD.
1. Read and understand operators manual before operating machine. 2. Place all controls in neutral, stop engine, remove ignition key, lock out power source, and wait for all motion to stop before servicing, adjusting, repairing, or unplugging. 3. Read and understand all decals on machine for your safety. 4. Keep all shields in place while machine is in operation. 5. Keep hands, feet, hair, and clothing away from moving parts. 6. Keep others away from machine while in operation. 7. Install safety locks before transporting or working beneath components. 8. Do not allow riders at any time. 9. Do not leave machine unattended with engine running. 10. Keep all hydraulic lines, couplings, and fittings free of leaks during operation. 11. Keep away from overhead electrical lines. Electrocutation can occur without direct contact. 12. Review safety instructions periodically.	1. Lea y comprenda el manual del operador antes de operar la máquina. 2. Coloque todos los controles en punto neutro, apague el motor, retire la llave de encendido, cierre la alimentación de electricidad y espere a que se detenga toda el movimiento antes de prestar el servicio, ajustar, reparar o desenchufar. 3. Lea y comprenda todos los decálogos colocados a la máquina para su seguridad. 4. Mantenga en su lugar los defensas cuando cualquier máquina se encuentre en funcionamiento. 5. Mantenga las manos, pies, cabello y ropa lejos de las partes en movimiento. 6. Mantenga a otras personas alejadas de la máquina en funcionamiento. 7. Instale trabas de seguridad antes de proceder al transporte o a trabajar debajo de las componentes. 8. No permita en ningún momento que otros pasajeros viajen en la máquina. 9. No deje a la máquina sin supervisión que el motor siga corriendo. 10. Mantenga lejos las líneas hidráulicas, acoplamientos y accesorios sin fugas durante el funcionamiento. 11. Permanezca alejado de las líneas eléctricas vivas. Puede producirse la electrocución sin contacto directo. 12. Revise los instructivos de seguridad en forma periódica.

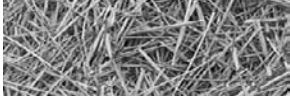
6500041



WARNING: NO RIDERS
SERIOUS INJURY COULD RESULT FROM RIDING ON THE MACHINE

 WARNING NO RIDERS SERIOUS PERSONAL INJURY COULD RESULT FROM RIDING ON THE MACHINE	 ADVERTENCIA 	PASAJEROS PROHIBIDOS PODRIAN RESULTAR LESIONES PERSONALES GRAVES AL VIAJAR EN LA MAQUINA
---	---	--

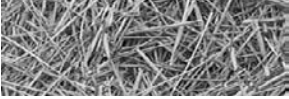
6500043



CAUTION: KEEP WHEEL BOLT TIGHT.

**KEEP WHEEL
BOLTS TIGHT**
**MANTENER AJUSTADOS
LOS PERNOS DE LA RUEDA**

6500042



- Replacement decals can be purchased from your Haybuster dealer.

1.4 Shielding

Shields are installed for your protection. Keep them in place, and replace damaged shields.

1.5 Personal equipment

Operators of this machine are required to wear head, eye, and ear protection. No loose clothing is allowed.

1.6 Safety review

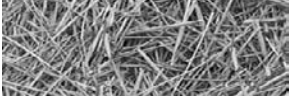
BEFORE OPERATING

1. Read and follow all instructions contained in:
 - a. This **256 BALEBUSTER operator's manual**
 - b. Tractor operator's manual
 - c. Decals placed on the BALEBUSTER.



NOTE: Additional copies of the above mentioned materials can be obtained from your dealer.

2. Allow only responsible, properly instructed individuals to operate your machine. Carefully supervise inexperienced operators.
3. Use a tractor that meets the tractor requirements contained within this manual. Additional weights may be necessary.
4. Make sure the machine is in good operating condition and that all protective shields are in place and in proper working order. Replace damaged shields before operating.
5. Be sure all bystanders and other workers are clear before starting tractor and BALEBUSTER.
6. Make no modifications to the machine unless specifically recommended or requested by the manufacturer.
7. Check periodically for breaks or unusual wear and make any necessary repairs.
8. Be sure the unit is securely attached to a tractor of equal or greater weight than the BALEBUSTER and bale.



DURING OPERATION

1. Enforce the following safety precautions and others contained in this manual to prevent serious personal injury or death due to accidental contact with rotating flails.
 - a. Everyone must be kept clear of work area except operator seated at tractor controls.
 - b. **Never work on or near BALEBUSTER unless engine is shut off and flails stopped.**
 - c. Disengage PTO and make sure everyone is clear of machine before starting engine.
2. Enforce the following safety precautions and others contained in this manual to prevent injury due to accidental contact with flying material thrown by flails.
 - a. Keep bystanders away from work area.
 - b. Keep shields in place and in good condition.
 - c. Watch out for and avoid any object that might interfere with the proper operation of the machine.
 - d. Replace missing or damaged flails.
3. Power takeoff shafts must be locked in place with protective PTO shields in place.
4. Keep hands, feet and clothing away from power driven parts.
5. **Never leave tractor controls unattended while the engine is running.**
6. Never allow riders on the machine or tractor at any time.
7. Exercise extreme care when operating on rough and or steep terrain. Avoid operation on terrain that is excessively rough or steep.

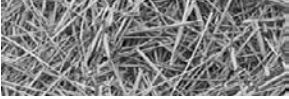
DURING SERVICE AND MAINTENANCE



CAUTION: When performing service and maintenance, make sure your tractor engine is off.

CAUTION: Before performing any maintenance or adjustments make sure machine is NOT running. If for any reason arc welding is to be done, always ground cylinder to frame of machine to prevent arcing in bearings.

1. Check for loose or badly worn bolts.
2. Check for loose or misaligned sprockets on bale conveyor.
3. Conveyor chain should be adjusted to allow lifting slat 1" to 1-1/2" above deck.
4. Follow Lubrication Chart.
5. Inspect rotor and all rotating parts for twine or wire build-up.
6. Check air pressure in tires, 40 lbs.

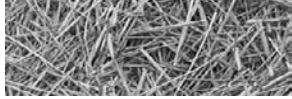


7. Discharge deflector has adjusting straps to allow forage to be spread to any desired width.
8. Bale deflector has been preset at factory.
9. Slug bars in front of rotor may be adjusted to expose more or less of the flail knives by adding or subtracting washers. **(See section 3.4, “Adjusting the machine” for more information)**
10. Additional slug bars may be added to prevent slugs from going through rotor when shredding small or large square bales. A kit is available through your dealer.
11. Check wheel bearings, and seals.
12. Torque flail knife anchor bolts, 180 to 190 ft. lbs.
13. Relieve all pressure in the hydraulic system before disconnecting the lines or performing other work on the system. Make sure all connections are tight and lines are in good condition before applying pressure to the system.

1.7 Towing/road transport

This machine is designed to fold for ease of transportation and storage. The rack assembly folds inside of bale chamber.

- Use good judgment and drive slowly over rough or uneven terrain.
- Be sure tractor brakes are properly adjusted and foot pedals are locked together.
- Check your state laws regarding the use of lights, slow moving vehicle signs, safety chain and other possible requirements.



Section 2: Dealer preparation

2.1 Assembly required

Park BALEBUSTER on flat surface, and block wheels.

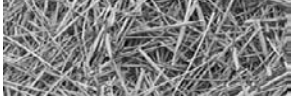
Open shipping kit, verify that all parts are included.

Refer to the parts book portion, page 42 and 43, Main Frame and Swivel Wheel for this portion.

1. Attach adjustable hitch parts 8100654 and 8100655 (parts 27 and 26) to frame using the 1x3 and 3/4x2-1/2 bolts as shown in the drawing. Tighten the bolts and nuts. Hole position will depend on the tractor used, see section 3.2.2 for more information.
2. Attach hitch brace 8100137 to hitch 8100049 using the 5/8x2 bolts, as shown in the drawing.
3. Attach link pins, 4800086 to hitch. If installing a quick tach, refer to pages 60 and 61, BALEBUSTER Quick Tach for placement of parts.
4. Install PTO shaft on Rotor shaft
 - A. Place key 6200020 in keyway.
 - B. Slide the machine end yoke of the PTO shaft over the rotor shaft and key.
 - C. Insert 1/4x2-1/4 rolled pin 4800249 in hole in rotor shaft.
 - D. Slide the inside edge of the yoke up against the roll pin.
 - E. Tighten the clamp bolt to lock the PTO yoke in place.
 - F. Tighten the set screw to hold the key in place.

Refer to pages 38 and 39, Hinge frame assembly #2 for this portion

5. Install PTO shield 8100070 on BALEBUSTER using the 3/8x1 bolts as shown in the drawing.
6. Be sure to measure shaft end distances when hitching to tractor, see section 3.2.2.



2.2 Pre-delivery inspection

INSTRUCTIONS: Before delivering the machine, check the following items carefully and make corrections when necessary. Place an “X” in the box after each item has been checked and found to be acceptable.

- Check machine for shortage or damage in transit
- Check for loose bolts or set screws
- Check all hydraulic components for leaks or damage
- Check lug bolts for tightness
- Check tires for proper air pressure
- Check condition of tire rims
- Check machine for proper lubrication
- Check all chains for proper adjustment
- Check all shields for installation and condition
- Check condition of all decals
- Check all phases of operation

2.3 Machine operation check

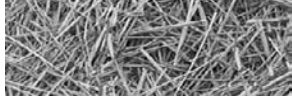
With Tractor hooked up to the BALEBUSTER, try all functions on the machine.

With the engine off and key removed from the switch:

1. Adjust the deflector.

With the engine at idle:

1. Raise and lower the loading tines.
2. Engage the bale conveyor, and adjust conveyor speed control valve on the BALEBUSTER.
3. Engage the tractor PTO, and the rotor should start turning. Listen for any odd noises and vibrations.

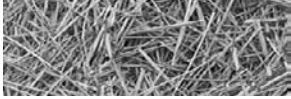


2.4 BIG BALEBUSTER shipping list

ITEM	PART NO.	QTY.	DESCRIPTION
1.	8100655	1	Adjustable Hitch, Right Hand
2.	8100654	1	Adjustable Hitch, Left Hand
3.	8100137	1	Adjustable Hitch, Brace
4.	4800086	2	Link Pin, 1-1/8"
5.	8100070	1	PTO Shield
6.	5000025	2	1-1/8" Lock Washer
7.	4900024	2	1-1/8" Hex Nut Fine Thread
8.	4800140	2	1"x3" Bolt
9.	5000053	2	1" Lock Washer
10.	4900031	2	1" Nut
11.	4800115	2	3/4 x 2-1/2" Bolt
12.	5000012	2	3/4" Lock Washer
13.	5000005	2	3/4" Flat Washer
14.	4900004	2	3/4" Nut
15.	4800010	4	5/8"x2" Bolt
16.	5000003	4	5/8" Lock Washer
17.	4900005	4	5/8" Hex Nut
18.	5000002	4	5/8" Flat Washer
19.	0500067	1	Operation & Parts Manual



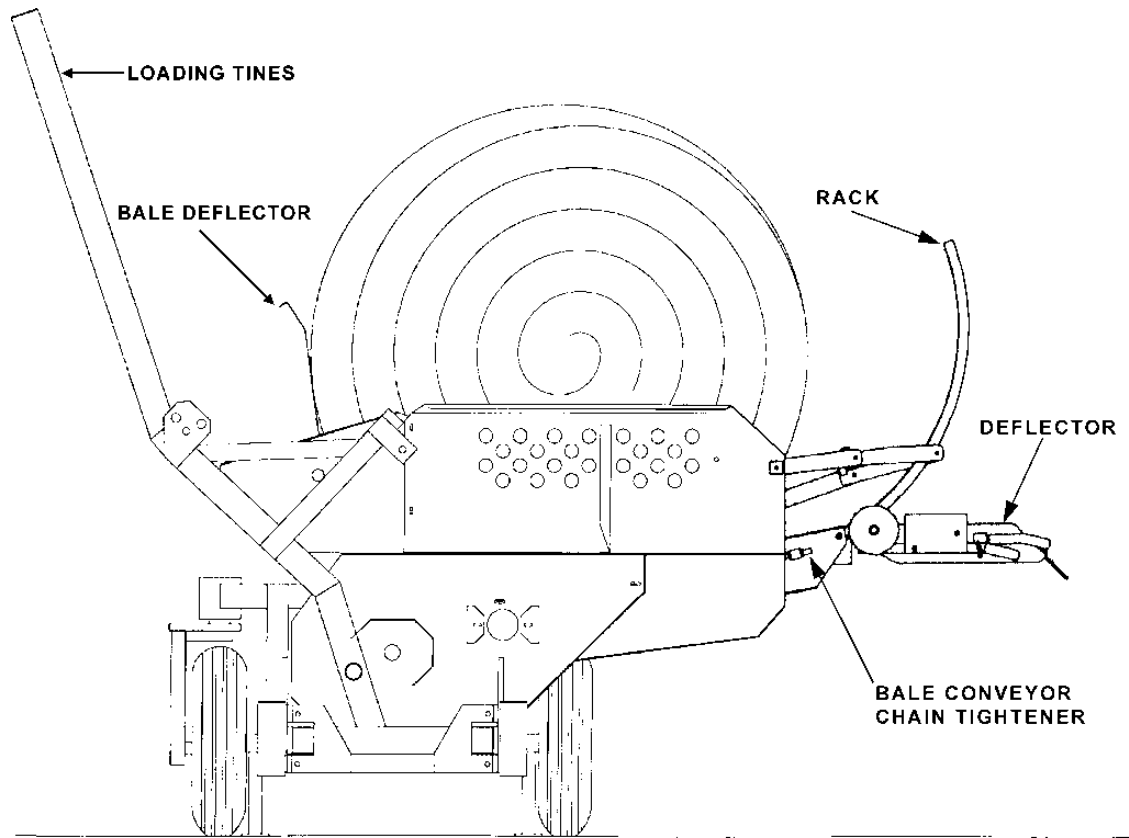
NOTE: See pages 42 and 43 Main Frame Assembly for more information.



Section 3: Machine Operation

3.1 Introduction to the machine

Figure 3.1
Front view of the BIG
BALEBUSTER



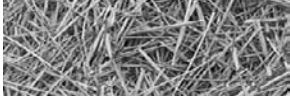
3.1.2 Operator's station/controls

Operator controlled items:

- Loading tines, to load the bale. One tractor hydraulic circuit is used to control loading tines. (See section 3.2.6 for more information.)
- The PTO shaft, which runs the rotor.
- The bale conveyor chain. Another tractor hydraulic circuit is used to control the bale conveyor's speed and direction. If the tractor is equipped with a PFC circuit, use it to control the bale conveyor.

Adjustable items:

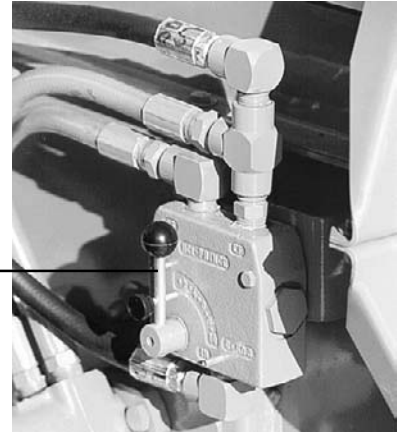
- The conveyor speed control valve (See section 3.4.2 for more information.)
- Slug bar setting (See section 3.4.2 for more information.)
- Deflector settings (See section 3.4.1 for more information.)



3.1.3 Bale conveyor speed

Bale conveyor speed is set with the bale conveyor speed control valve. To chop the forage finer, decrease the conveyor speed by rotating the control lever up and to the left. For a coarser cut, increase the conveyor speed by rotating the lever to the right and down.

speed control valve



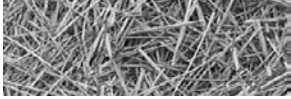
3.1.4 Deflector

The deflector can be positioned for creating a windrow, spreading, bunkfeeding, or stockpiling. Lower the deflector for a narrower windrow and raise the deflector for a wider spread.

To change the position, remove the locking pin and firmly grab the deflector latch handle and lift the release lever with the other hand. Rotate the deflector to the desired position and release the handle. Reinstall the locking pin. Handle tension can be adjusted by removing the deflector shield and adjusting the spring tension bolt. Reinstall the shield after tension is adjusted. A wider deflector belt (PN 8100420) is available for bunk feeding or additional material control.

Figure 3.2 deflector adjustments - locking pin, deflector position indicator, deflector latch handle, deflector release handle, and deflector position indicator. although the controls for the deflector are identical this Figure shows them on a 2620 BALEBUSTER.





3.1.5 Stripper plates/screens

The BALEBUSTER comes with one stripper plate standard. For a finer cut, one or two more stripper plates can be added. (See section 3.4.1, for more information about adding or removing stripper plates.)

In applications where a very coarse cut is desired, the stripper plate may be removed.



stripper plate

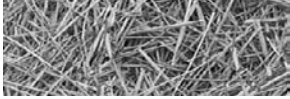
3.1.6 Rotor

The rotor flails shred the bale and throws the material into the deflector. Rotor speed should remain constant, which is done by keeping the tractor PTO at 1000 RPM.

Figure 3.3
Location of the rotor and flails



flail
rotor



3.1.7 Slug bars

The BALEBUSTER comes with five slug bars. Up to nine slug bars can be installed. Increasing the number of slug bars helps hold the bale away from the rotor, particularly when shredding wet, tough bales.

The slug bars can also be adjusted to expose more or less of the flail knives to the bale. This is accomplished by adding and subtracting flat washers, from either end of each bar.

Operating tractor at maximum RPM allows machine to do a better job of chopping forage, and also minimizes twine buildup on the rotor. Twine buildup should be kept to a minimum to reduce fire hazard.



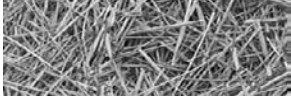
slug bar

bale conveyor



WARNING: SERIOUS INJURY COULD RESULT IF MACHINE IS ALLOWED TO TIP.

Basic machine is equipped with two (2) stands for storage. Make sure base of stands are setting firmly before unhooking from tractor mounts. Always operate slat conveyor to rotate bale in direction indicated by arrow on front shield. Reverse the direction of rotation only if bale is lodged or hesitates to turn.



3.2 Operation

To insure long life and economical operation, we highly recommend the operator of the BALEBUSTER be thoroughly instructed in the maintenance and operation of the machine.

There is no substitute for a sound preventative maintenance program and a well-trained operator.

Prior to starting the engine of the tractor, we recommend the operator make a visual inspection of the unit. This can be done as the lubrication is being carried out. Any items that are worn, broken, missing or needing adjustment must be serviced accordingly before operating the BALEBUSTER.

3.2.1 Pre-operation inspection



WARNING: Before inspecting the machine, use the normal shutdown procedure in section 3.2.4.

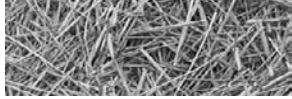
Check the following:

- Condition of flails and attachment bolts.
- Rotor for twine build-up.
- Chains for proper tension, and condition.
- Check for loose bolts, worn or broken parts.
- All lubrication points have been serviced.
- Lug nuts for tightness.
- Condition of tire rims.
- Tires for proper air pressure.
- Installation of slow moving vehicle (SMV) sign if required.
- Installation and condition of shields.
- Condition of decals.
- Hydraulic components for leaks or damage.



WARNING: Hydraulic fluid escaping under pressure can be almost invisible and can have sufficient force to penetrate the skin. When searching for suspected leaks, use a piece of wood or cardboard rather than your hands. If injured, seek medical attention immediately to prevent serious infection or reaction.

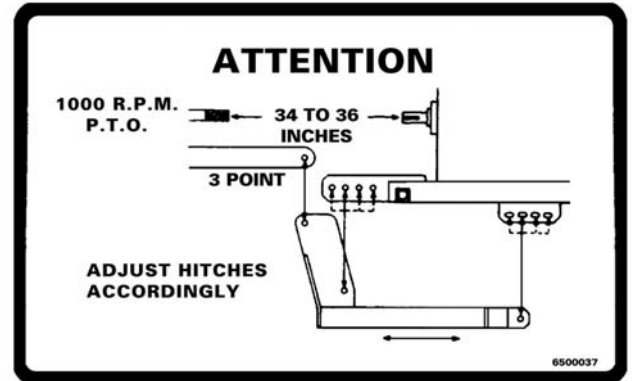
- Test run the BALEBUSTER before loading. To prevent damaging the BALEBUSTER always engage PTO with engine idling. Look for excessive vibration, loose or broken parts. Make any necessary repairs before attempting to do any bale feeding.



3.2.2 Hitching the BALEBUSTER to a tractor

To hitch the BALEBUSTER to a tractor, perform the following steps:

1. These settings must be made to the tractor's 3-pt hitch prior to operating the BIG BALEBUSTER.
 - A. Eliminate the 3-pt hitch side-to-side movement by installing or setting the sway blocks for the rigid operation.
 - B. Eliminate lower link mechanical flotation by setting it to the rigid position.
 - C. See the operator's manual or your tractor's dealer for precise instructions.

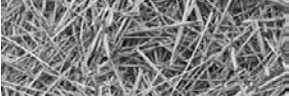


2. Measure the distance between the end of the PTO shaft and the end of the rotor shaft. The distance should be 34-36 inches.



NOTE: If distance is not 34-36 inches, follow steps 3-5.

3. Detach the tractor from the BALEBUSTER.
4. Reinstall the adjustable hitches in any of the four holes on the main frame so that the 34 to 36 inch measurement will be obtained when the tractor is attached.
5. Reattach the tractor to the BALEBUSTER.
6. Attach the PTO shaft to the tractor PTO shaft. Depress the button on the coupling and slide the coupling onto the splined shaft. Make sure the spring loaded safety catch is properly seated.
7. Connect the two hydraulic hoses from the hydraulic cylinder to one set of hydraulic couplers on the tractor.
8. Connect the two hydraulic hoses from the bale conveyor speed control valve to the second set of hydraulic couplers on the tractor.
9. Raise the three point hitch until the BALEBUSTER frame is level. Lock the hitch control lever in that position.



10. Remove pin on jackstands, and then turn jackstands 90° and use the pin to reinstall the jackstands on the bracket. (See Figure 3.5)



NOTE: The use of stabilizers or sway bars is recommended to prevent sideways movement of the machine.

IMPORTANT: When using smaller tractors in the CATEGORY III class, be certain three-point rating is at least 4000 lbs.



WARNING: Improper hitch adjustment may cause separation of P.T.O., driveline when loading bale or operating over uneven terrain. Separation may also occur if three point links are lifted excessively high.

3.2.3 Starting the machine



WARNING: After making all necessary hook-ups to tractor, be sure rotor chamber is clear of any solid objects. Make sure any bystanders are away from discharge before engaging PTO. Flying objects can cause serious injury or even death. Stay clear of discharge side of machine unless operator has stopped tractor engine and machine has stopped rotating. Failure to follow these instructions may result in severe injury.

To start the machine, perform the following steps:

1. Load bale into the BALEBUSTER. (See Section 3.2.6 for a description of this procedure.)
2. Adjust the deflector to desired position.
3. Position the BALEBUSTER where you want to begin shredding the bale.
4. Engage the PTO, and increase tractor engine speed so PTO is at 1000 RPM.
5. Engage the bale conveyor, and check to see if the bale is turning in the right direction. The proper direction of bale rotation is indicated by the bale rotation decal located on the front of the BALEBUSTER.



NOTE: Operating tractor PTO at 1000 RPM allows machine to do a better job of chopping forage and also keeps a minimum of twine build-up on the rotor. Twine build-up should be kept to a minimum to reduce fire hazard.

NOTE: Always operate bale conveyor to rotate the bale in direction indicated by arrow on the front shield. Reverse direction only if the bale is lodged or hesitates to turn.



CAUTION: Serious injury could result if machine is allowed to tip.



3.2.4 Normal shut-down procedure



WARNING: For your safety and the safety of others, you must use the following normal shut-down procedure before leaving the tractor controls unattended for any reason, including servicing, cleaning, or inspecting the BALEBUSTER. A variation of the following procedure may be used if so instructed within this manual or your tractor manual or if an extreme emergency requires it.

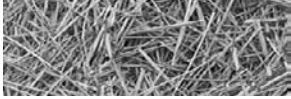
To shutdown the machine, perform the following steps:

1. Shut hydraulic drive off for chain conveyor.
2. Disengage PTO
3. Lower machine to ground level.
4. Place transmission in park or set park brake
5. Shut Off engine and remove key.
6. Wait for all movement to stop.

3.2.5 Unhitching the BALEBUSTER from a tractor

To unhitch the BALEBUSTER from a tractor, perform the following steps:

1. Run the BALEBUSTER until it is empty.
2. Shut-down the BALEBUSTER as described above, keeping the BALEBUSTER high enough to allow adjustment and lowering of the jackstands.
3. Remove the jackstand and pins, and turn jackstands 90° so that the machine can be supported by the jackstands. Reinstall the jackstands and pins on their brackets.
4. Lower machine until the BALEBUSTER rests on both jackstands.
5. Disconnect the hydraulic hoses from the tractor.
6. Disconnect the PTO from the tractor, and place the front half of the shaft into the bracket located on the front of the BALEBUSTER.
7. Disconnect the tractor lift arms from the BALEBUSTER.
8. Drive the tractor slowly away from the BALEBUSTER.



3.2.6 Loading bales into the BALEBUSTER

Figure 3.4
Bale loading sequence

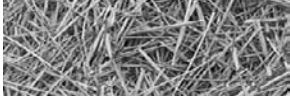


To load bales into the BALEBUSTER, perform the following steps:



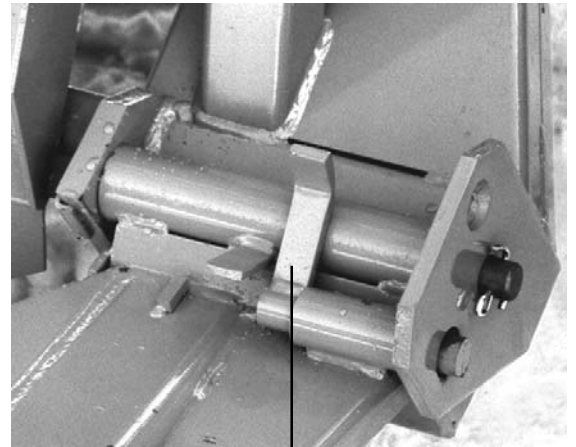
NOTE: The loading area should be flat and level.

1. Position the BALEBUSTER ahead and to the side of the bale. Extend the hydraulic cylinder, lowering the loading tines until they are on the ground.
2. Back up slowly, while centering the bale between the tines. Back up until the loader frame touches the front of the bale.
3. Retract the hydraulic cylinder slowly. The bale will roll into the shredding chamber.
4. Once the cylinder is completely retracted, the BALEBUSTER is ready to shred the bale.



3.3 Transportation and storage

This machine is designed to fold for ease of transportation and storage. The rack and deflector assembly folds inside of bale chamber. The loader tine frame fold and lock over the bale chamber. To unfold the loader tine frame, place the tine frame in the unlocked position, tilt hinge frame hydraulically to allow loader tine frame to lay on ground. Lock tine frame pin, located at hinge point, to prevent tines from folding in each time a bale is loaded. Fold out rack and deflector. Reverse procedure to fold for transport.



tine frame pin in the locked working position

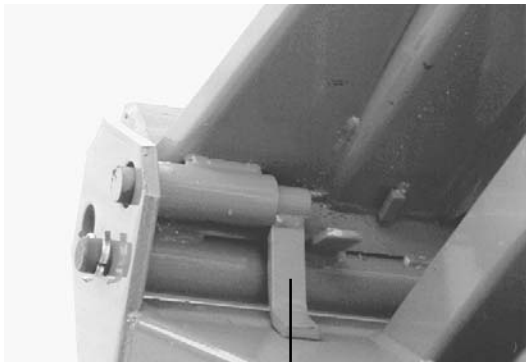


NOTE: A bracket is located on the front of the BALEBUSTER to hold the front half of the PTO shaft.

3.3.1 Preparing for storage



WARNING: When preparing machine for storage, use normal shutdown procedure.



tine frame pin in the locked transport position

Clean all mud, dirt, grease and other foreign material from the exterior of the machine. Cut all twine off from around the rotor. Wash the complete machine. If washing the BALEBUSTER with a high-pressure washer, keep the nozzle away from the sealed bearings. Repaint places where bare metal is exposed - this will inhibit rusting.

Place the parking stands in the down and in locked position. Block the rear axle up taking the weight off the tires, but do not deflate the tires. If possible, store the machine in a dry, protected place. If it is necessary to store the machine outside, cover it with waterproof canvas, plastic, or other suitable protective material.

Coat exposed lift cylinder rod with grease. Oil chains on conveyor. Lubricate thoroughly according to lubrication instructions. Repack wheel bearings.

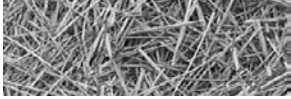
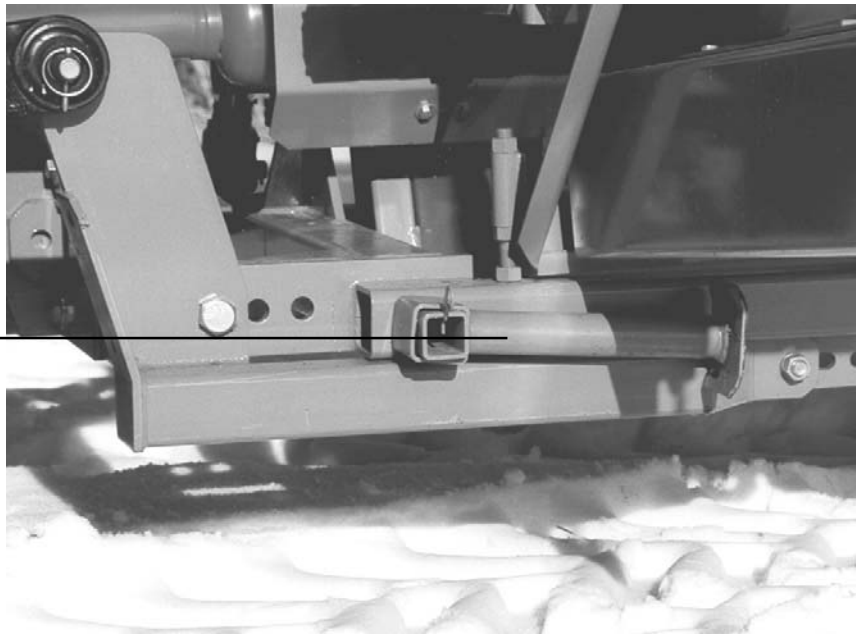


Figure 3.5
Location of parking stand,
shown in transport/working
position

parking stand



Check the machine for any worn or broken parts. By ordering parts now, you will avoid delays when it is time to remove the machine from storage. When ordering parts always specify machine serial number and the part number of the replacement part. Part numbers can be found in the parts section of this manual.

3.3.2 Removing from storage

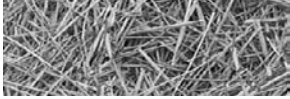
Remove all protective coverings.

Remove blocking from under BALEBUSTER. Check tire pressure.

Lubricate machine in accordance with lubrication instructions found in this manual.

Check all hydraulic hoses for deterioration and, if necessary, replace. Tighten any loose bolts, nuts and hydraulic fittings.

Follow pre-starting inspection instructions.



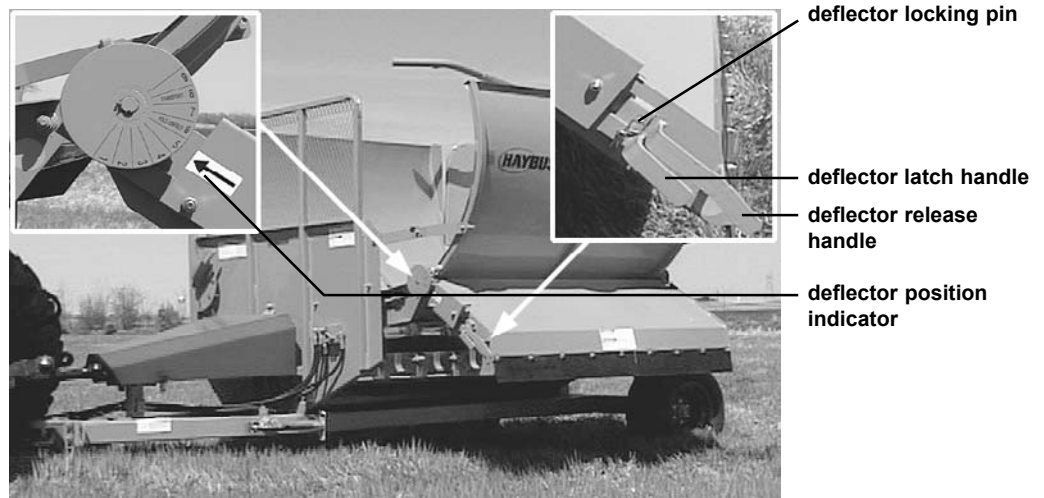
3.4 Adjusting the machine

3.4.1 Changing distribution pattern

The deflector can be positioned for creating a windrow, spreading, bunkfeeding, or stockpiling. Lower the deflector for a narrower windrow and raise the deflector for a wider spread.

To change the position, remove the locking pin and firmly grab the deflector latch handle and lift the release lever with the other hand. Rotate the deflector to the desired position and release the handle. Reinstall the locking pin. Handle tension can be adjusted by removing the deflector shield and adjusting the spring tension bolt. Reinstall the shield after tension is adjusted. A wider deflector belt (PN 8100819) is available for bunk feeding or additional material control.

Figure 3.6
deflector adjustments - locking pin, deflector position indicator, deflector latch handle, deflector release handle, and deflector position indicator. although the controls for the deflector are identical this Figure shows them on a 2620 BALEBUSTER.



3.4.2 Changing length of cut

CHANGING STRIPPER PLATES

Adding stripper plates will produce a finer cut and removing plates will produce a coarser cut. (See **Figure 3.7** and **section 3.1.5**)

For a finer cut, one or two more stripper plates can be added. Space the added stripper plates 4" apart and drill five (5) 17/32" holes for each plate using the plate as a guide. Install the plate with five 1/2" x 1-1/2" bolts, flat washers, lock washers, and nuts.

In applications such as land reclamation, where a very coarse cut is desired, the stripper plate may be removed.

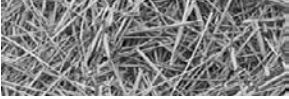
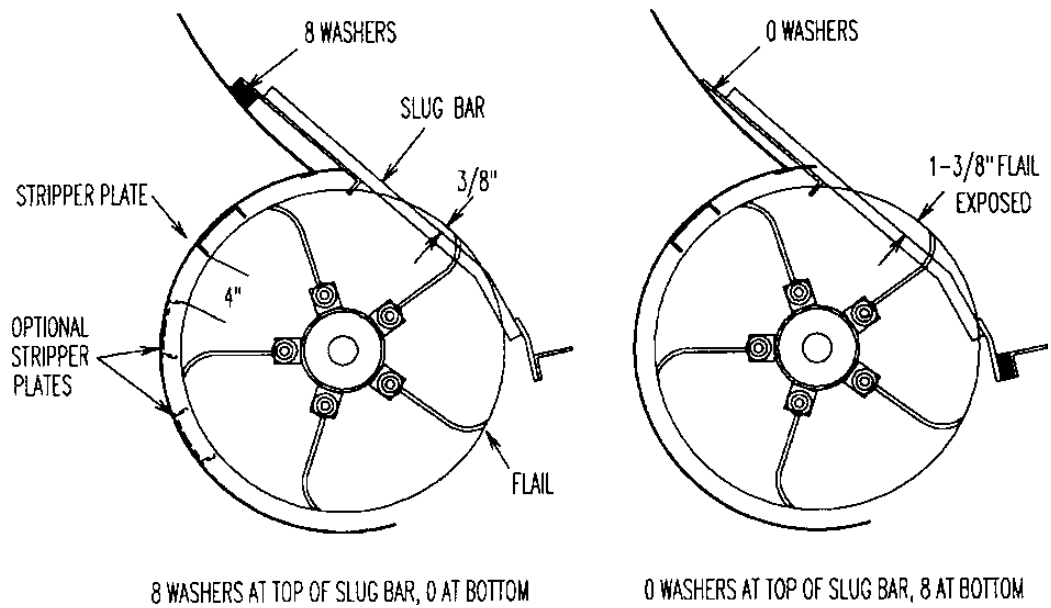


Figure 3.7
stripper plate position and
slug bar settings

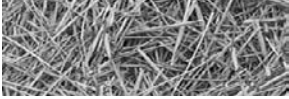


CHANGING SLUG BAR SETTINGS

Exposing less flail will create a finer cut, while exposing more flail will create a coarser cut.

This is accomplished by moving flat washers from one end of each bar to the other end. (See **Figure 3.7** and **Table below**)

No. Washers on Top	No. Washers on Bottom	Approx. Flail Exposed
0	8	1-3/8"
1	7	1-1/4"
2	6	1-1/8"
3	5	1"
4	4	7/8"
5	3	3/4"
6	2	5/8"
7	1	1/2"
8	0	3/8"



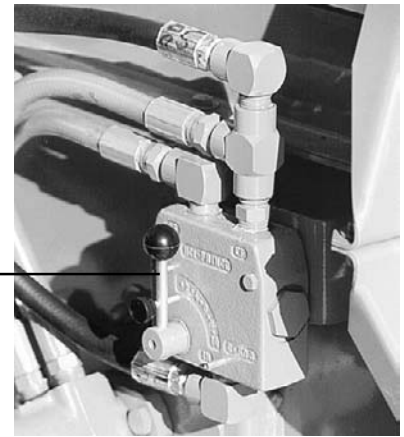
ADJUST CONVEYOR SPEED

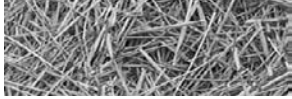
Moving the lever counterclockwise will slow the conveyor, and make a finer product. Moving the lever clockwise will speed up the conveyor and make a coarser product.

For tractors with PFC type hydraulic systems:

This valve should be set in the full open position. Conveyor speed can be controlled directly from the tractor controls.

speed control valve





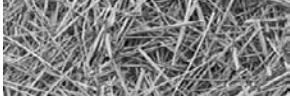
Section 4: General maintenance



CAUTION: Before performing any maintenance or adjustments make sure machine is NOT running. If for any reason arc welding is to be done, always ground cylinder to frame of machine to prevent arcing in bearings.

4.1 Maintenance and adjustments

1. Check for loose or badly worn bolts.
2. Check for loose or misaligned sprockets on bale conveyor.
3. Conveyor chain should be adjusted to allow lifting slat 1" to 1-1/2" above deck.
4. Follow Lubrication list in section 4.2.
5. Inspect rotor and all rotating parts for twine or wire build-up.
6. Check air pressure in tires, 40 psi.
7. Discharge deflector has adjusting straps to allow forage to be spread to any desired width. **(See section 3.4, "Adjusting the machine" for more information)**
8. Bale deflector has been preset at factory.
9. Slug bars in front of rotor may be adjusted to expose more or less of the flail knives by adding or subtracting washers. **(See section 3.4, "Adjusting the machine" for more information)**
10. Additional slug bars may be added to prevent slugs from going through rotor when shredding small or large square bales. A kit is available through your dealer.
11. Check wheel bearings, and seals.
12. Torque flail knife anchor bolts, 180 to 190 ft. lbs.
13. Relieve all pressure in the hydraulic system before disconnecting the lines or performing other work on the system. Make sure all connections are tight and lines are in good condition before applying pressure to the system.



4.2 Lubrication

Machine has 9 points to lubricate with grease every 15 hours of operating time. Use high grade lubricant.

- 1 Rotor bearing (2 lubrication points, see Figure 4.1)
- 2 P.T.O. universal joints and telescoping shaft (3 lubrication points, see Figure 4.2)
- 3 Main frame pivot bushings (2 lubrication points, see Figure 4.3)
- 4 Swivel wheel pivot (2 lubrication points, see Figure 4.4)



CAUTION: Always shut off machine before adjusting or lubricating.

Figure 4.1
Rotor bearing lubrication
point one of two

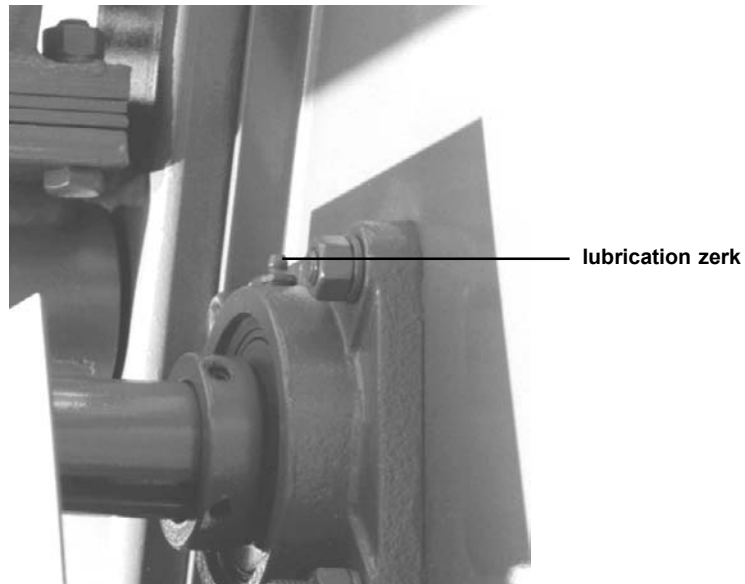
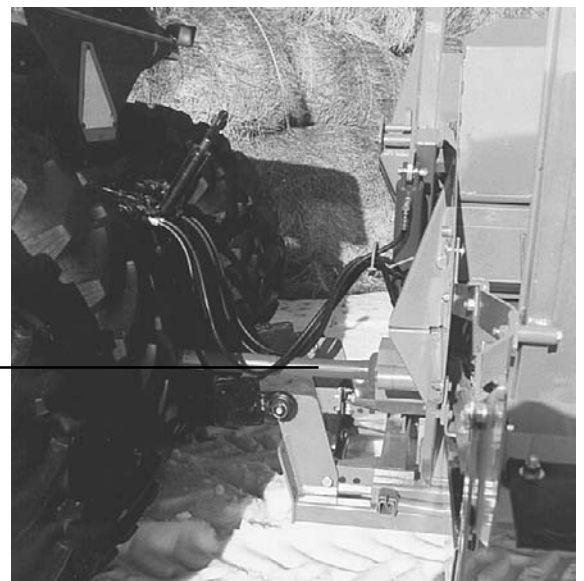


Figure 4.2
Location of PTO
universal joints and
telescoping shaft

there are three lubrication points
along the PTO universal joints and
telescoping shaft



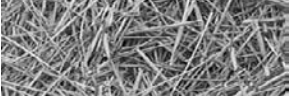


Figure 4.3
Main frame pivot bushing
lubrication point one of two

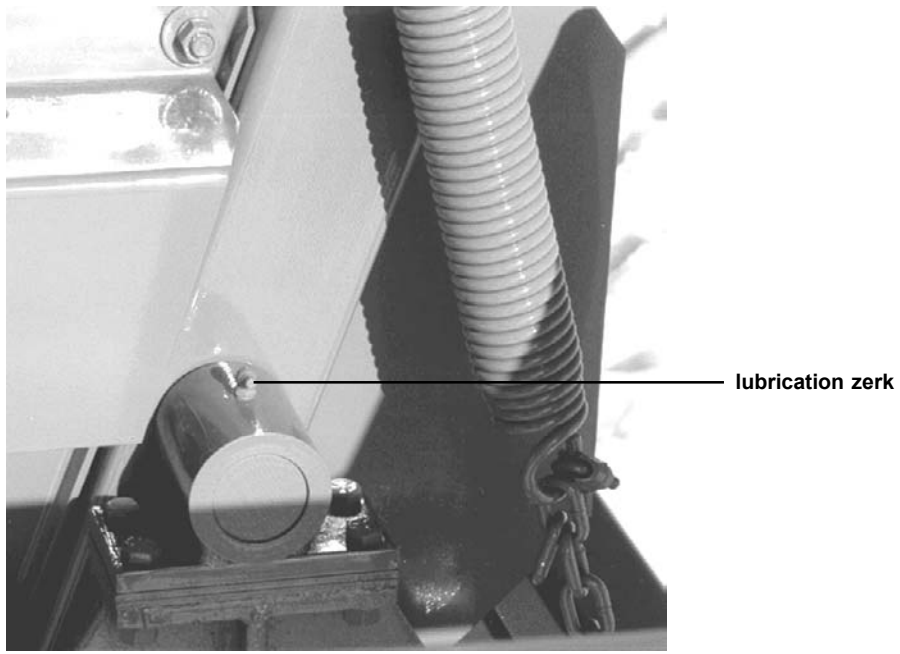
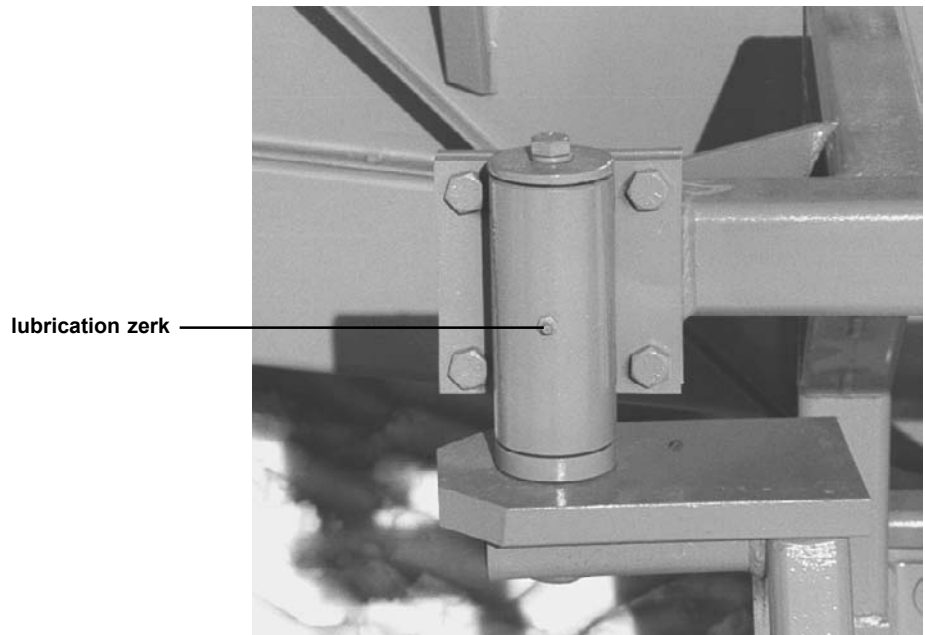


Figure 4.4
Swivel wheel pivot lubrication
point one of two

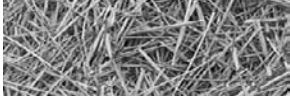


4.3 Axle, wheels, tires

Repack wheel bearings annually.

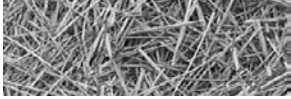
4.4 General appearance

Clean all mud, dirt, grease and other foreign material from the exterior of the machine. Cut all twine off the rotor. Wash the entire machine. If washing the BALEBUSTER with a high-pressure washer, keep the nozzle away from the sealed bearings. Repaint places where bare metal is exposed.



Section 5: Troubleshooting

PROBLEM	CAUSE	REMEDY
1. No Capacity	1. Bale turning too slow.	1. Open flow control valve.
2. Bale Does Not Turn	1. Bale lodged in feeder.	1. Reverse rotation of slat conveyor.
3. Excessive Vibration	1. Broken flail.	1. Replace flail.
	2. Defective cylinder bearing.	2. Replace bearing.
	3. Misaligned or worn PTO.	3. Replace worn part or complete PTO.
4. Machine Will Not Lift Bale	1. Tractor hydraulic pressure too low.	1. Check pressure.
	2. Hydraulic oil leaking by piston in cylinder.	2. Repair or replace hydraulic cylinder.
5. Forage Too Coarse	1. Conveyor speed too fast.	1. Decrease conveyor speed.
	2. Slug bar set too low.	2. Raise slug bar to expose less flail.
	3. Stripper bar removed.	3. Replace or add additional stripper bar.
6. Forage Too Fine	1. Conveyor speed too slow.	1. Increase conveyor speed.
	2. Slug bar set too high.	2. Lower slug bar to expose more flail.
	3. Extra stripper bar installed.	3. Remove one or all stripper bars.
7. Forage Blows Past Bunk When Bunk Feeding	1. Deflector too high.	1. Lower deflector. Add (optional) 18-x69-3/4" deflector belting.



Appendix A: WARRANTY

DuraTech Industries International Inc. warrants to the original purchaser for one year from purchase date that this product will be free from defects in material and workmanship when used as intended and under normal maintenance and operating conditions. This warranty is limited to the replacement of any defective part or parts returned to our factory in Jamestown, N.D., within thirty (30) days of failure.

This warranty shall become void if in DuraTech Industries International, Inc.'s, judgment the machine has been subject to misuse, negligence, alterations, damaged by accident or lack of required normal maintenance, or if the product has been used for a purpose for which it was not designed.

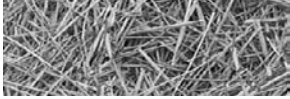
All claims for warranty must be made through the dealer which originally sold the product and all warranty adjustments must be made through same.

This warranty does not apply to tires or bearings or any other trade accessories not manufactured by DuraTech Industries International Inc.'s. Buyer must rely solely on the existing warranty, if any, of these respective manufactures.

DuraTech Industries International Inc., shall **not** be held liable for damages of any kind, direct, contingent, or consequential to property under this warranty. DuraTech Industries International Inc., cannot be held liable for any damages resulting from causes beyond its control. DuraTech Industries International Inc., shall **not** be held liable under this warranty for loss of crops, or rental costs or any expense or loss for labor or supplies.

DuraTech Industries International Inc., reserves the right to make changes in material and/or designs of this product at any time without notice.

All other warranties made with respect to this product, either expressed or implied, are hereby disclaimed by DuraTech Industries International Inc.



Appendix B: BIG BALEBUSTER Specifications

General

Tractor H.P. Required	See BEFORE OPERATING Min. 60 H.P.
Capacity	5-1/2 Ft. Long x 6-1/2 Ft. Dia., 1500 Lbs.
Rotor Length	72"
Rotor Diameter	25-1/2"
Rotor Bearings - Ball	1-3/4"
Knives- Heat-Treated	26
Caster Wheel - Taper Roller Bearings - Tire Size	760 x 15 6-Ply

Working Position:

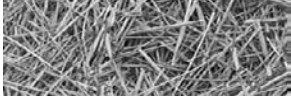
Length	13'2"
Width	13'4"
Height	10'

Transport Position:

Length	13'2"
With Caster Wheel Removed	12'10"
Width w/Deflector Folded	10'8"
Width w/Tines and Deflector Folded	8'10"
Height	6'5"
2 Point Hookup	
P.T.O	1000 R.P.M.
Dual Hydraulics (single hydraulic system optional)	1800 psi
Cylinder 3-1/2" x 16" Double Acting	

Options

- CAT II/III Quick Attach Bracket
- Wide Deflector Belting
- Stripper plat

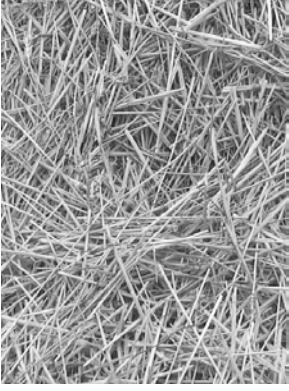


Appendix C: Required For Operation



WARNING: Do not operate the BALEBUSTER unless the tractor complies with the following requirements:

1. Horsepower - 60 HP minimum.
2. Rollover protective structure and seat belts.
3. Hydraulic system - 8 gallons per minute (30 liters per minute) minimum, 1,800-Psi minimum (105 bar) two-way valves.
4. Two double acting control valves.
5. The tractor must be of equal or greater weight than the BALEBUSTER and bale to assure adequate braking and steering control.
6. Counterbalance weight - It may be necessary to add weight to the front end of your tractor to maintain adequate tractor stability and control. At least 20% of the total weight must remain on the front axle.



HAYBUSTER[®]

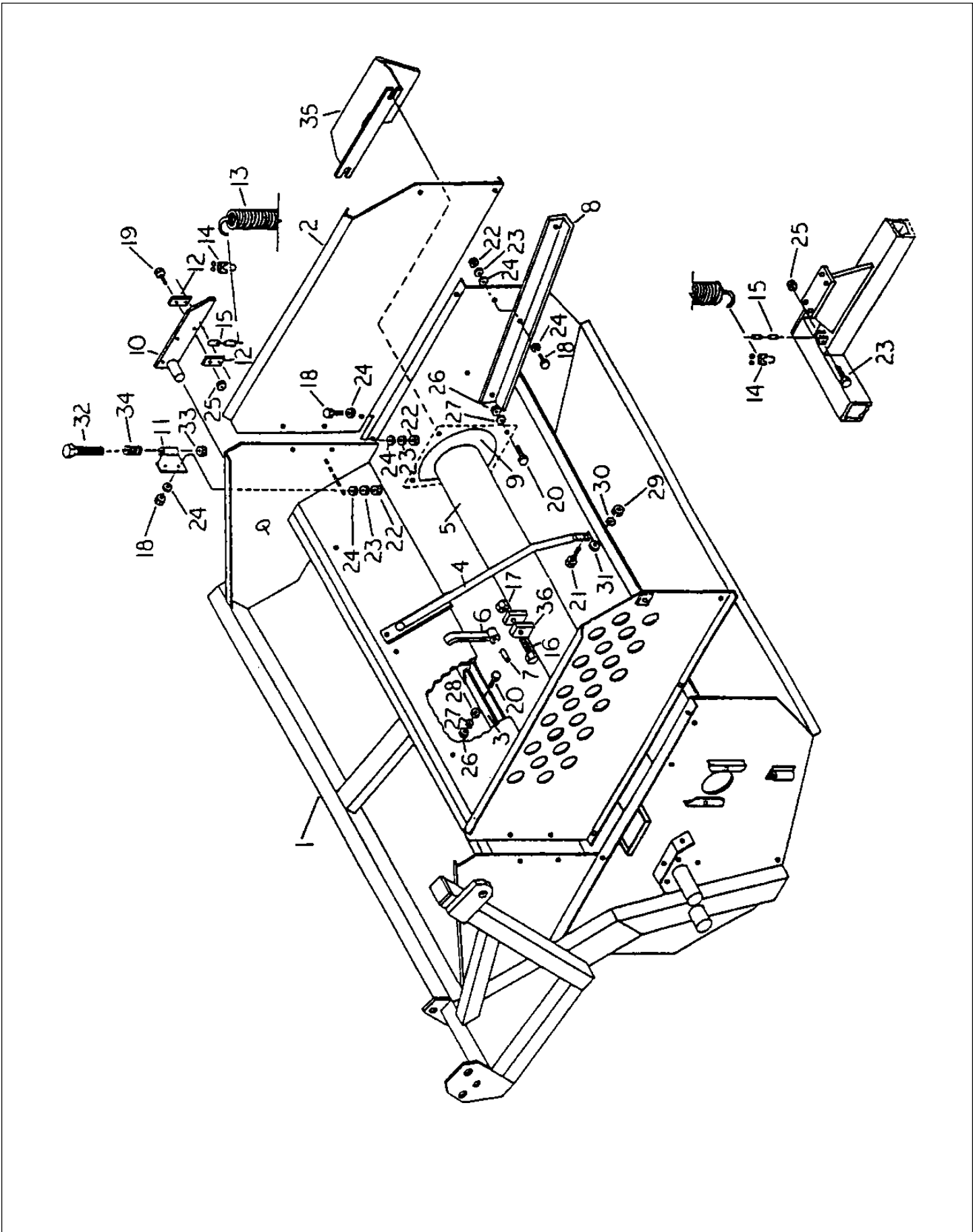
BIG

BALEBUSTER[™]

SERIAL NUMBER HI 4395 AND UP

**Part 2:
Parts Reference**

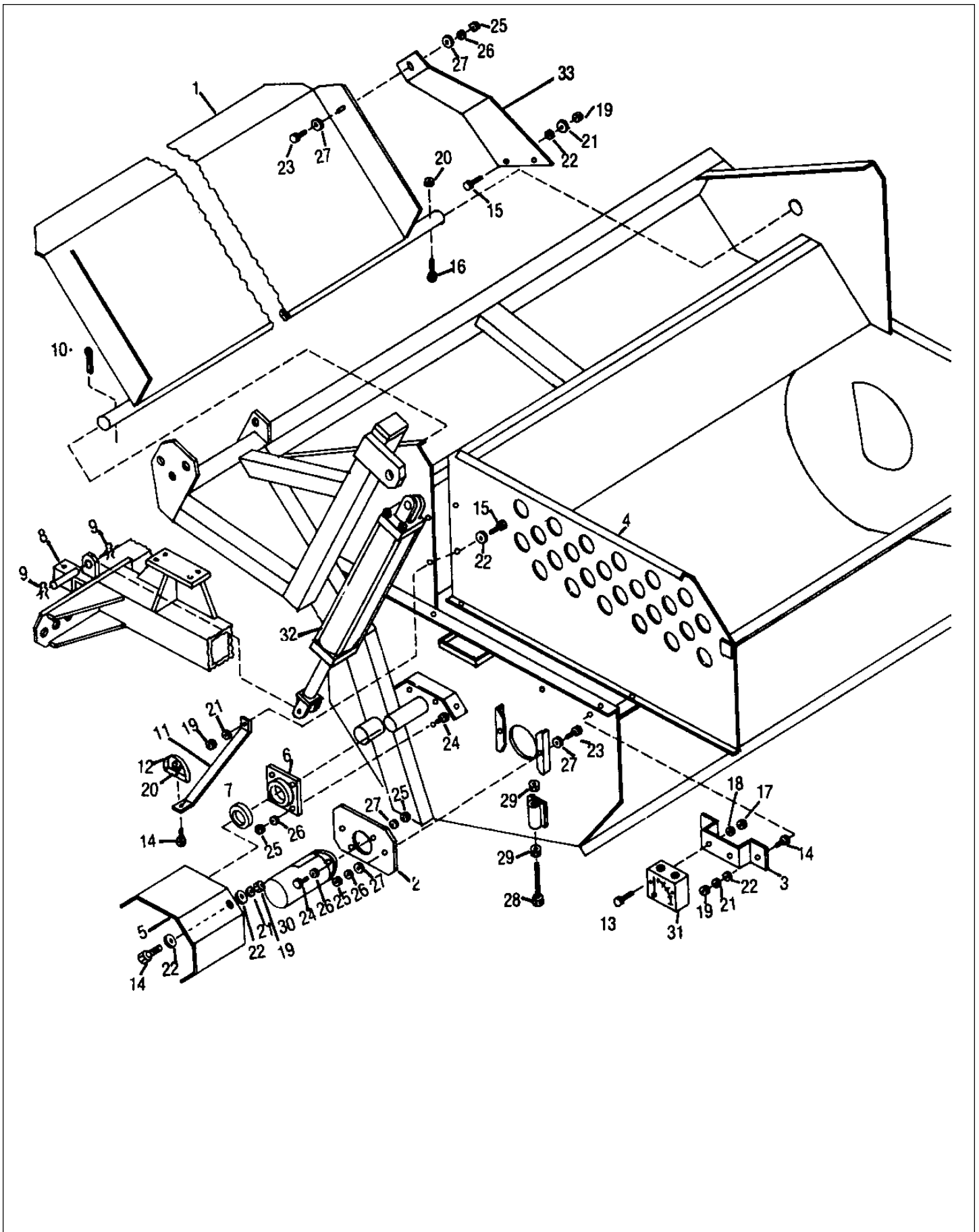
HINGE FRAME ASSEMBLY #1 SER. NO. HI 4395 & UP



HINGE FRAME ASSEMBLY #1 SER. NO. HI 4395 & UP

ITEM	PART NO.	QTY.	DESCRIPTION
1	8100514	1	Frm/Hinge/1996
2	8100639	1	Shid/Rear/98
3	8100024	1	Stripper Plate
4	8100579	5	Slug Bar\ W/2 bends\97
5	8100437	1	Rtr/New/30Flail
6	5200009	30	Flail/BB/8"
7	7500223	30	Flail Bushing
8	8100174	2	Wide Conveyor Mount
9	8100067	1	Rotor End Plate
10	8100068	1	Lever
11	8100069	1	Lever Stop
12	8100034	2	Connector Link
13	6100013	1	Spring
14	4800099	2	Clamp, 5/16"
15	1100095	1	1/4"Chain, 5 Links
16	4800100	30	5/8" x 4" Grade 5 Bolt
17	4900012	30	5/8" Self Locking Nut
18	4800003	13	3/8" x 1 " Hex Head Bolt
19	4800034	3	3/8" x 1-1/2" Hex Head Bolt
20	4800082	9	1/2" x 1-1/2" Hex Head Bolt
21	4800010	8	5/8" x 2" Hex Head Bolt
22	4900002	15	3/8" Hex Nut
23	5000019	15	3/8" Lock Washer
24	5000001	26	3/8" Flat Washer
25	4900023	3	3/8" Self Locking Nut
26	4900001	9	1/2" Hex Nut
27	5000006	9	1/2" Lock Washer
28	5000004	5	1/2" Flat Washer
29	4900005	8	5/8" Hex Nut
30	5000003	8	5/8" Lock Washer
31	5000002	20	5/8" Flat Washer
32	4800139	1	3/4" x 4-1/2" Hex Head Bolt
33	4900139	1	3/4" Lock Nut
34	6100005	1	Spring
35	8100125	1	Rotor End Shield
36	8100311		Bracket\Flail\TAB
NOT SHOWN			
	2000311	2	Bearing\Flange\Cast\1-3/4"4 Bolt

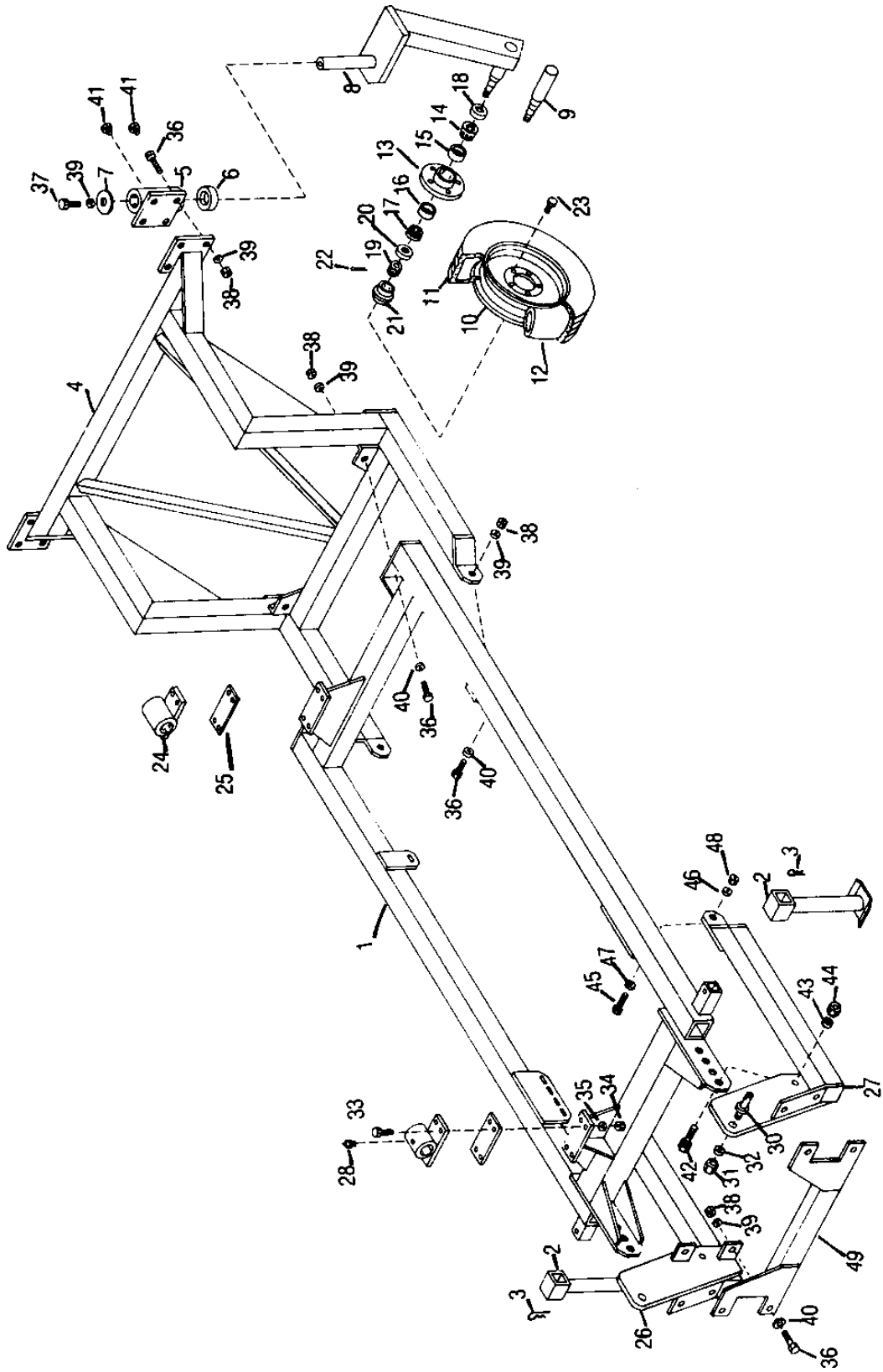
HINGE FRAME ASSEMBLY #2 SER. NO. HI 4395 & UP



HINGE FRAME ASSEMBLY #2 SER. NO. HI 4395 & UP

ITEM	PART NO.	QTY.	DESCRIPTION
1	8100035	1	Bale Deflector
2	8100036	1	Hydraulic Motor Mounting Bracket 116
3	8100037	1	Flow Control Mounting Bracket
4	8100638	1	Front Shield/98
5	8100070	1	P.T.O. Shield
6	2000311	2	Rotor Bearing, 4-Hole Flange 1-3/4"
7	2200008	2	Rotor Bearing Lock Collar
8	4100030	2	Cylinder Pin
9	4100031	4	Hair Pin
10	4800043	2	1/4" x 2-1/2" Cotter Key
11	8100040	1	Hose Hanger Bracket
12	8100041	1	Hose Hanger
13	4800101	2	1/4" x 2-1/2" Hex Head Bolt
14	4800003	6	3/8" x 1 " Hex Head Bolt
15	4800098	3	3/8" x 1 -1/4" Hex Head Bolt
16	4800029	1	3/8" x 2-1/2" Grade 5 Bolt
17	4900009	2	1/4" Hex Nut
18	5000024	2	1/4" Lock Washer
19	4900002	8	3/8" Hex Nut
20	4900023	2	3/8" Self Locking Nut
21	5000019	8	3/8" Self Locking Nut
22	5000001	8	3/8" Flat Washer
23	4800018	3	1/2" x 1-1/4" Hex Head Bolt
24	4800082	10	1/2" x 1-1/2" 1 Hex Head Bolt
25	4900001	13	1/2" Hex Nut
26	5000006	13	1/2" Lock Washer
27	5000004	7	1/2" Flat Washer
28	4800102	2	3/4" x 7" Adjusting Bolt
29	4900004	4	3/4" Hex Nut
30	3900003	1	Orbit Motor M207
31	3800036	1	Flow Control Valve
32	4100119	1	Hydraulic Cylinder, Welded
33	8100142	1	Bale Guide Brace
NOT SHOWN			
	3600238	1	PTO Shaft Complete
	4800249	1	1/4" x 2-1/4" Rolled Pin
	6200020	1	3/8" x 2-1/4" Square Key

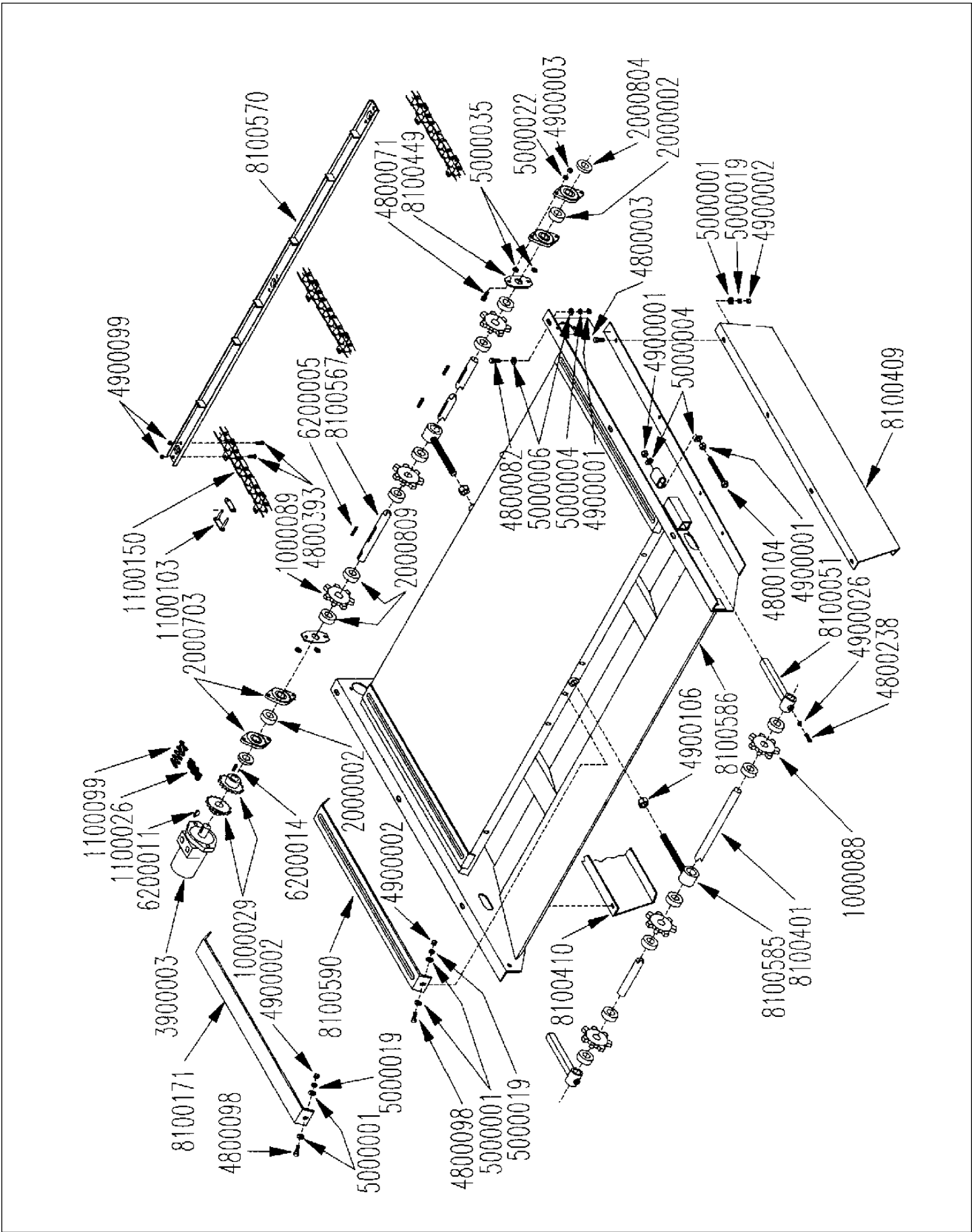
MAIN FRAME & SWIVEL WHEEL ASSEMBLY SER. NO. HI 4395 & UP



MAIN FRAME & SWIVEL WHEEL ASSEMBLY SER. NO. HI 4395 & UP

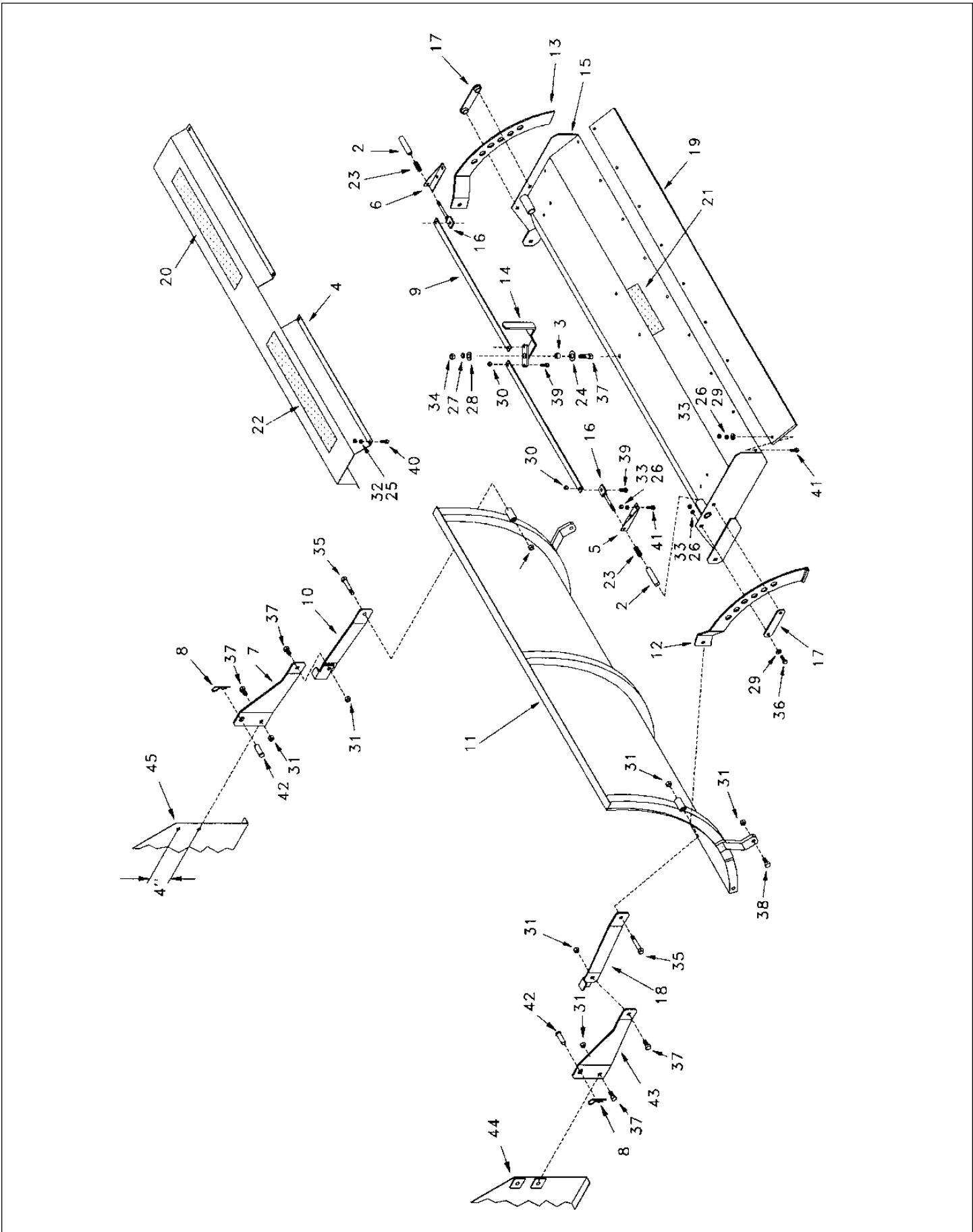
ITEM	PART NO.	QTY.	DESCRIPTION
1	8100126	1	Main Frame
2	8100053	2	Stand
3	4800107	2	1/8" Hair Pin
4	8100084	1	Dual Wheel Frame
5	8100054	2	Swivel Wheel Pivot Weldment
6	8100055	2	Swivel Wheel Pivot Thrust Washer
7	8100056	2	Swivel Wheel Pivot Thrust Washer
8	8100057	2	Swivel Wheel Frame Weldment
9	3000007	2	Spindle
10	2600606	2	Wheel 15", 5-Bolt
11	2600008	2	Tire 760 x 15", Rib Type
12	2700005	2	Tube 15"
13	na	2	ORDER 2900011
14	2900015	2	Cone, Inner
15	2900016	2	Cup, Inner
16	2900004	2	Cup, Outer
17	2900018	2	Cone, Outer
18	2900014	1	Seal
19	4900054	2	7/8" Castle Nut
20	5000055	2	7/8" Spindle Washer
21	2900013	2	Cap
22	3000005	1	Cotter Key
23	2900012	10	Wheel Bolt
24	8100058	2	Hinge Weldment
25	8100059	2	Shim
26	8100655	1	Adjustable Hitch, Right
27	8100654	1	Adjustable Hitch, Left
28	3800042	2	Grease Zerk-90°
29			
30	4800086	2	Link Pin, 1-1/8"
31	4900024	2	Nut 1-1/8"
32	5000025	2	Lock Washer 1-1/8"
33	4800114	8	1/2" x 2" Grade 5 Hex Bolt
34	4900001	8	1/2" Hex Nut
35	5000006	8	1/2" Lock Washer
36	4800010	16	5/8" x 2" Hex Bolt
37	4800106	2	5/8" x 1-1/2" Hex Bolt
38	4900005	16	5/8" Hex Nut
39	5000003	18	5/8" Lock Washer
40	5000002	8	5/8" Flat Washer
41	3800041	4	Grease Zerk, Straight
42	4800140	2	1" x 3" Bolt
43	5000053	2	1" Lock Washer
44	4900031	2	1" Hex Nut
45	4800115	2	3/4" x 2-1/2" Bolt
46	5000012	2	3/4" Lock Washer
47	5000005	2	3/4" Flat Washer
48	4900004	2	3/4" Hex Nut
49	8100137	1	Brace
50	2900011	2	Hub Complete includes 13-18, 21, & 23

BALE CONVEYOR ASSEMBLY SER. NO. GI 4298 & UP



BALE CONVEYOR ASSEMBLY SER. NO. GI 4298 & UP

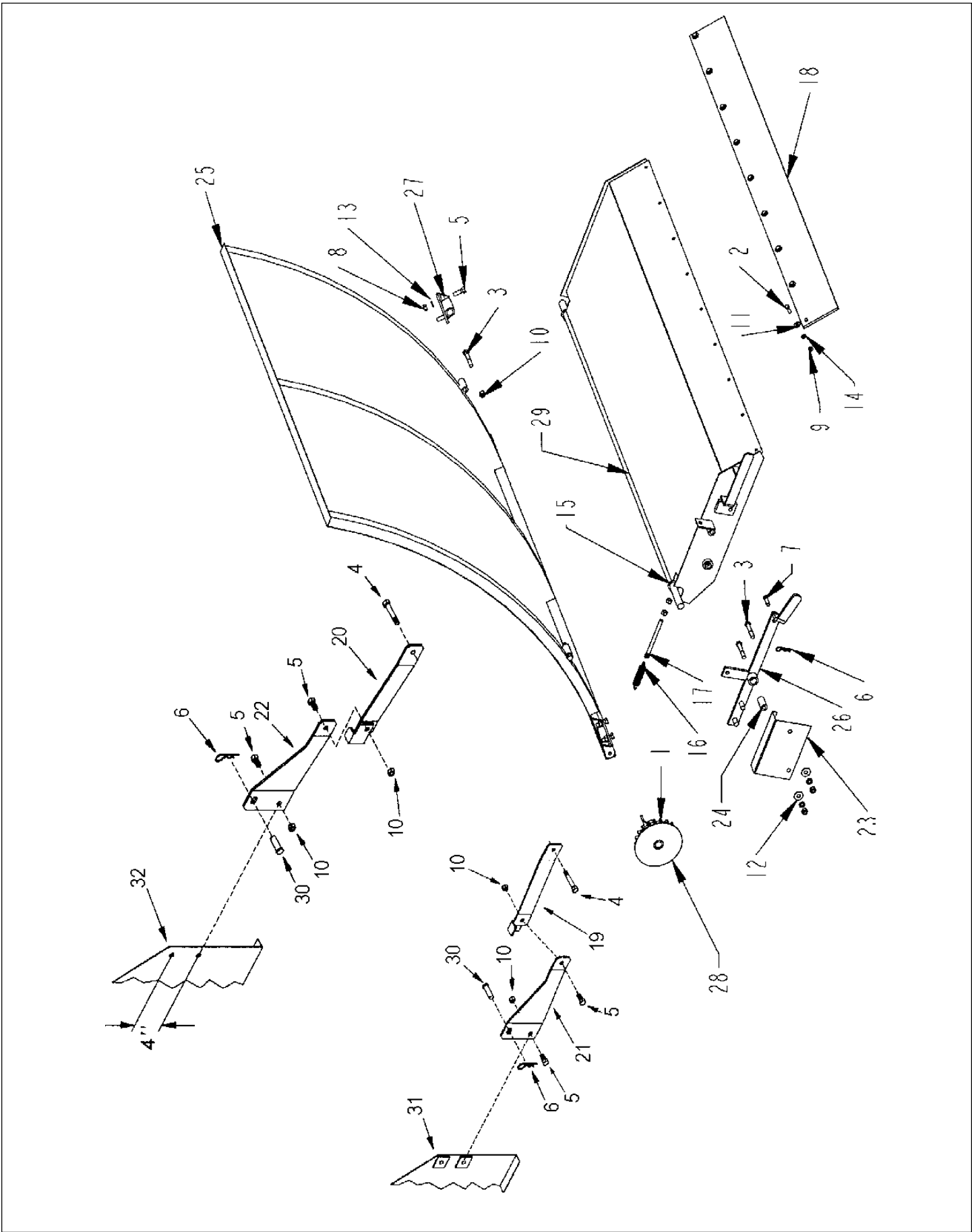
PART NO.	QTY.	DESCRIPTION
8100595		CNVYR\ASSY\3CH\256\97(Does not include motor 3900003)
1000029	2	COUPLER SPROCKET
1000088	3	IDLER SPROCKET
1000089	3	DRIVE SPROCKET
1100026	1	COUPLER CHAIN
1100099	1	CONNECTOR LINK
1100103	3	CONNECTOR LINK CA620
1100150	3	CHAIN CA620 44 LINKS AND 9 ATTCHMNTS
2000002	2	BEARING 1" BORE
2000703	4	FLGETT\1\2BOLT\PLTD
2000804	2	CLLR\ECC\LOCK\1
2000809	12	CLLR\SHFT\1\SET
3900003	1	ORBIT MOTOR (SEE PAGE 50)
4800003	10	3/8" X 1" BOLT
4800071	4	5/16" x 1-1/4" Bolt
4800082	6	BOLT\HEX\1/2X1-1/2
4800098	10	3/8" X 1-1/4" BOLT
4800104	2	ADJUSTING BOLT 1/2" X 5"
4800238	2	3/8" x 1-1/4" Set Screw
4800393	54	5/16" X 7/8" GRADE 8 BOLT
4900001	10	1/2" NUT
4900002	20	3/8" NUT
4900003	5	5/16" NUT
4900026	2	3/8" JAM NUT
4900099	54	5/16" X LOCK NUT GRADE 8
4900104	4	3/4" Jam Nut
4900106	2	NUT\NYLCK\3/4\NC
5000001	28	3/8" FLAT WASHER
5000004	16	1/2" FLAT WASHER
5000006	6	1/2" Lock Washer
5000019	18	3/8" LOCK WASHER
5000022	5	5/16" LOCK WASHER
5000023	8	5/16" FLAT WASHER
6200005	3	KEY\SQ\1/4X1-1/2
6200011	1	1/4" X 1" WOODRUFF KEY
6200014	1	1/4" x 1-1/4" Square Key
6500267	1	DECAL\WARN\2\RED\REFCT
6500268	1	DECAL\WARN\2\AMBER\REFCT
7500147	1	Brass Bushing (for 1000088) Not Shown
8100051	2	TIGHTENER BRACKET
8100171	4	PLASTIC RUB PLATE (WIDE CONVEYOR)
8100401	1	IDLER SHAFT 1"X71 1/2
8100409	1	REAR\CONVEYOR SIDE EX
8100410	1	FRONT\CONVEYOR SIDE E
8100449	2	GUARD\TWINE\CNVYR\256
8100452		GUIDE\BALE\CUTTER\SANDH
8100567	1	SHFT\DRV\3CH\CNVYR\25
8100570	9	SLAT\CNVYR\3CH\256
8100585	2	SUP\SHFT\DRIVE\CNVYR\
8100586	1	FRM\CNVYR\3CH\256II
8100590	1	PL\RUB\CHAIN\CNVYR



RACK AND DEFLECTOR ASSEMBLY SER. NO. HI 4395 TO 4511

ITEM	PART	QTY.	DESCRIPTION
1	8100518		Rack\Deflector\Assy
2	8100471	2	Pin\Latch\Deflector\256
3	8100470	1	Bushing\Latch\256
4	8100469	1	Cover\Latch\Deflector\256
5	8100468	1	Guide LH\Latch\256
6	8100467	1	Guide RH\Latch\256
7	8100636	1	Strap\Rear\Rack\98
8	4800107	2	Pin\Hair\1/8 #9
9	8100455	2	Link\Latch\Deflector\256
10	8100451	1	Strap\Weld\Rear\256+II
11	8100450	1	Rack\Curved\256
12	8100593	1	Adj Link\RH\Deflector\256
13	8100592	1	Adj Link\LH\Deflector\256
14	8100604	1	Latch Han\Deflector\256/97
15	8100445	1	Deflector\CL Latch\256
16	8100444	2	Eye Bolt\Deflector\256
17	8100443	2	Latch Mount\Deflector\256
18	8100441	1	Strap Weld\Front\256
19	8100420	OPTION	Belting\18x70\OPTION
19	8100202	1	Belting\6x70\STANDARD
20	6500033	1	Balebuster Decal
21	6500034	1	Danger Flyg Hay. Rack Decal
22	6500020	1	Haybuster Decal\Sunburst
23	6100002	2	Spring\.072x.687odx2-1/8
24	5000033	1	Washer\1-5/16ODx13/16ID
25	5000022	8	Washer\Lock\5/16
26	5000019	17	Washer\Lock\3/8
27	5000006	1	Washer\lock\1/2
28	5000004	1	Washer\Flat\1/2
29	5000001	13	Washer\Flat\1/2
30	4900023	4	Nut\Toplock\3/8
31	4900014	8	Nut\Toplock\1/2
32	4900003	8	Nut\Hex\5/16
33	4900002	17	Nut\Hex\3/8
34	4900001	1	Nut\Hex\1/2
35	4800135	2	Bolt\Hex\1/2x3-1/2
36	4800098	4	Bolt\Hex\3/8x1-1/4
37	4800082	5	Bolt\Hex\1/2x1-1/2
38	4800061	2	Bolt\Crg\1/2x1-1/2
39	4800053	4	Bolt\Crg\3/8x1
40	4800147	8	Bolt\Hex\5/16x7/8
41	4800003	17	Bolt\Hex\3/8x1
42	4800595	2	Pin\Clevis\1/2" x 1-1/4"
43	8100637	1	Strap\Front\Rack\98
44	8100638	1	Shield\Front\98
45	8100639	1	Shield\Rear\98

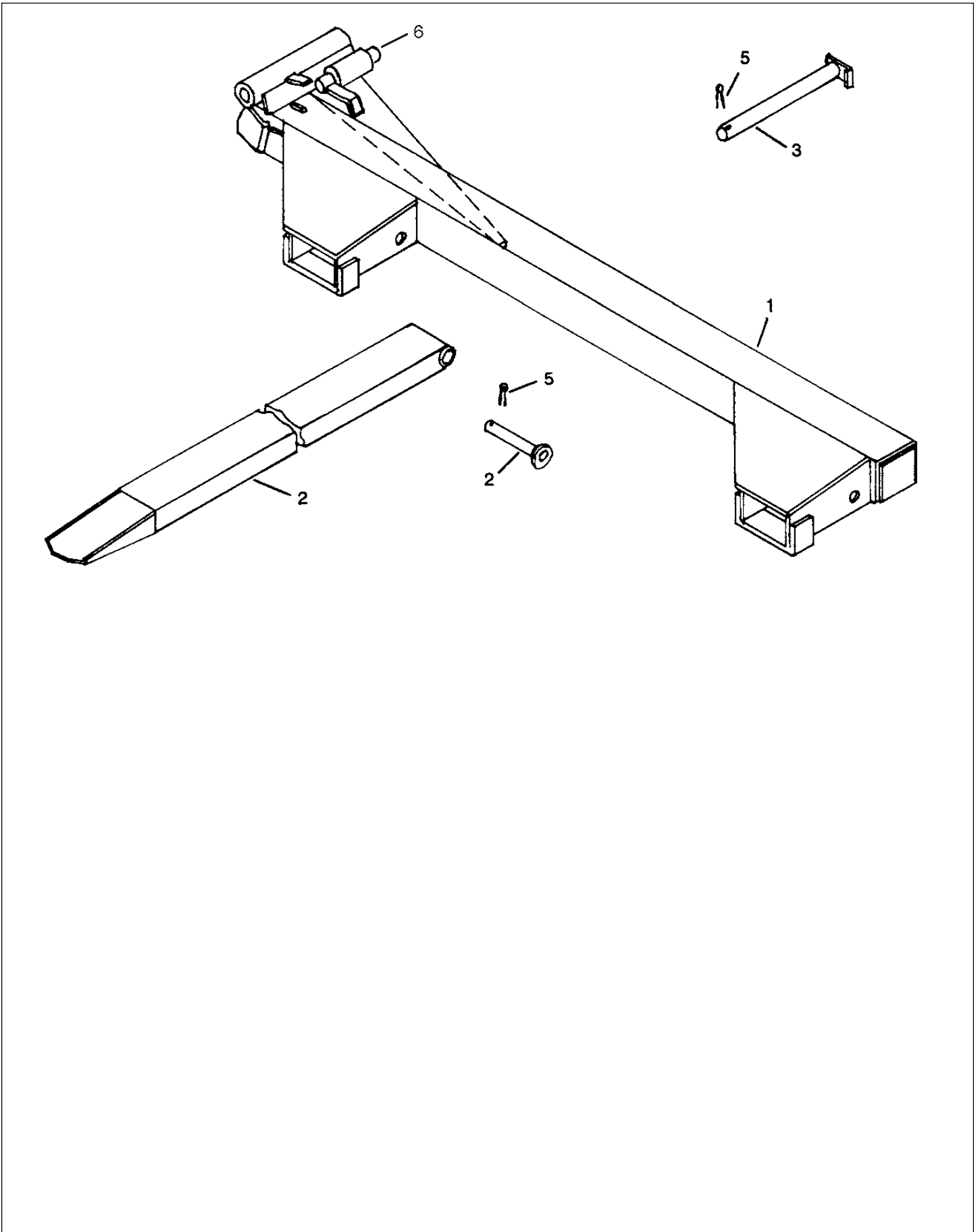
RACK AND DEFLECTOR ASSEMBLY SER. NO. II 4512 & UP



RACK AND DEFLECTOR ASSEMBLY SER. NO. II 4512 & UP

ITEM	PART	QTY.	DESCRIPTION
1	1000217	1	SPKT\80\B\20\1-1/2\3/8KW\1-1/2THRU
2	4800003	9	BOLT\HEX\3/8X1
3	4800068	4	BOLT\HEX\1/2X3
4	4800135	2	BOLT\HEX\1/2X3-1/2
5	4800082	9	BOLT\HEX\1/2X1-1/2
6	4800107	1	PIN\HAIR\1/8
7	4800610	1	PIN\CLEVIS\1/2X1-1/2
8	4900001	8	NUT\HEX\1/2\NC
9	4900002	9	NUT\HEX\3/8\NC
10	4900014	9	NUT\TPLCK\1/2\NC
11	5000001	9	WASH\FLAT\3/8
12	5000004	2	WASH\FLAT\1/2
13	5000006	6	WASH\LOCK\1/2
14	5000019	9	WASH\LOCK\3/8
15	5000040	2	WASH\BUSH;MACH\1
16	6100036	1	1 OD X 4 5/16 SPRING
17	7500716	1	ROD\ARM
18	8100202	1	BELT\DFLCTR\II
19	8100441	1	STRAP\WELD\FRONT
20	8100451	1	STRAP\WELD\REAR
21	8100637	1	STRAP\FRONT\RACK\98\2PT
22	8100636	1	STRAP\REAR\RACK\98\2PT
23	8100726	1	SHLD\LATCH\DFLCTR
24	8100727	2	BSHNG\LATCH\DFLCTR
25	8100749	1	RACK\CURVED\II
26	8100750	1	BRACKET\LATCH\DFLCTR\II
27	8100751	1	MNT\REAR\DFLCTR\II
28	8100752	1	MNT\FRONT\W-SPROCKET\II
29	8100753	1	DFLCTR\II
30	4800595	2	PIN\CLEVIS\1/2X1-1/4
31	8100638	1	SHIELD\FRONT\256\98
32	8100639	1	SHIELD\REAR\256\98

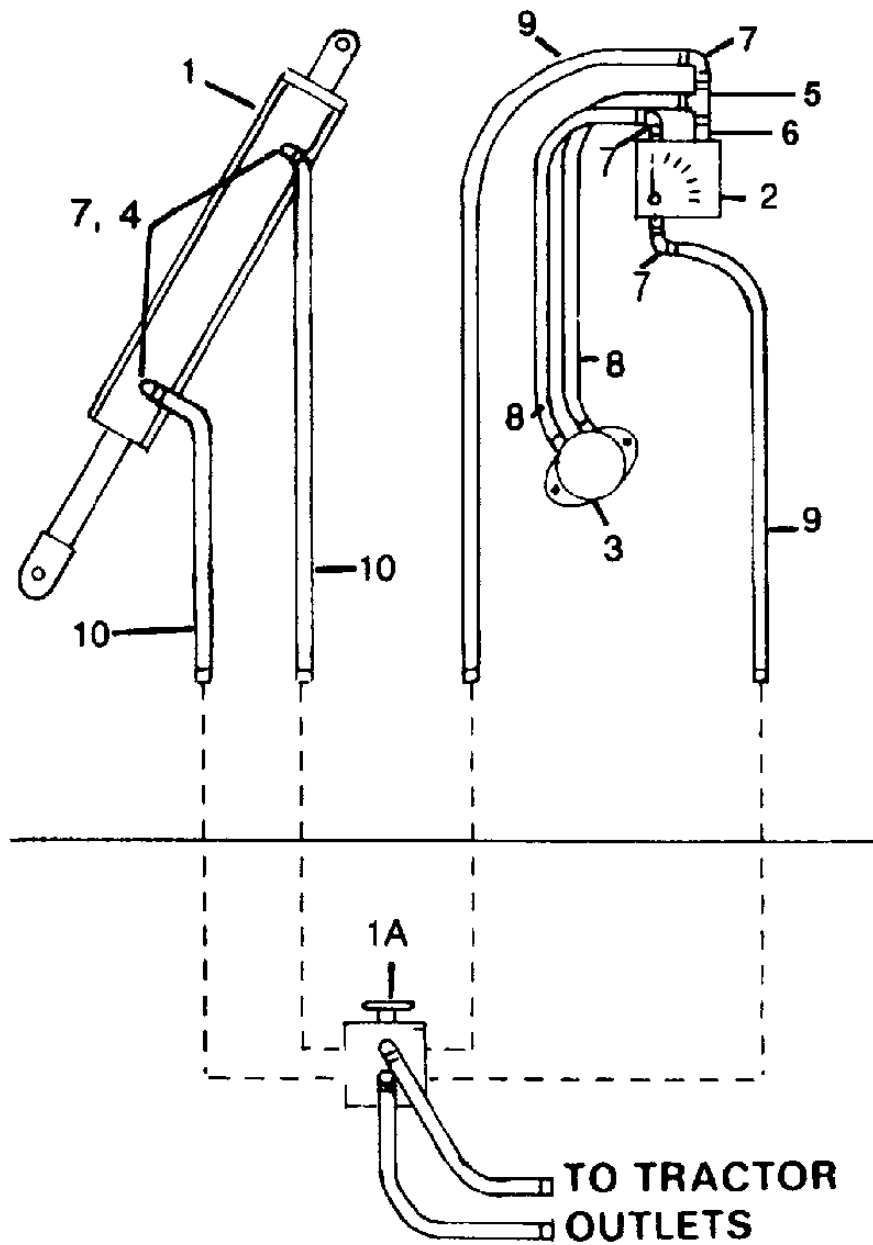
TINES AND TINE FRAME ASSEMBLY SER. NO. 3598 & UP



TINES AND TINE FRAME ASSEMBLY SER. NO. 3598 & UP

ITEM	PART NO.	QTY.	DESCRIPTION
1	8100421	1	Tine Frame
2	8100043	2	Tine
3	8100044	1	Hinge Pin
4	8100243	2	Anchor Pin
5	4800103	3	1/4" x 2" Cotter Key
6	8100490		Pin\Lock\Tine\256

DUAL HYDRAULIC HOOK-UP



CONVERSION TO SINGLE HYDRAULIC HOOK-UP

(Dual Hydraulic Hook-Up)

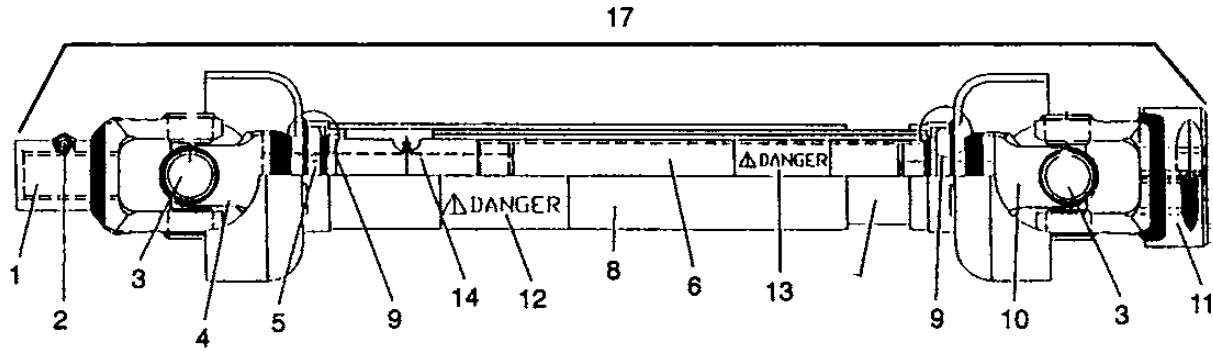
HYDRAULICS PARTS LIST SER. NO. 101 & UP

ITEM	PART NO.	QTY.	DESCRIPTION
1	4100027	1	Hydraulic Cylinder 3-1/2" x 16"
2	3800036	1	Flow Control Valve
3	3900003	1	Hydraulic Motor
4	3800097	2	1/2" x 1/16" Restrictor Bushing
5	3800009	1	1/2" Tee
6	3800045	1	1/2" x 2" Closed Nipple
7	3800008	5	1/2" Elbow, 90° St.
8	3700018	2	1/2" Hose, 18" Long
9	3700181	2	1/2" Hose, 86" Long
10	3700061	2	1/2" Hose, 66" Long
11	3800525	4	FTG\1/2\NPTF\QUICK COUPLER (NOT SHOWN)

Conversion to Single Hydraulic Hook-up

1A	4000024	1	Selector Valve
----	---------	---	----------------

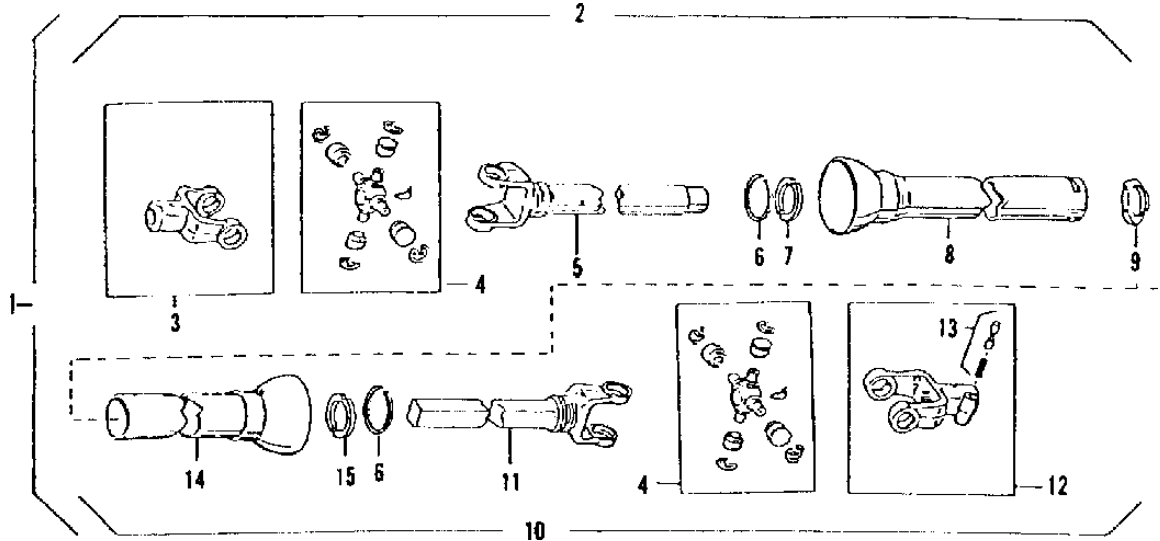
P.T.O. ASSEMBLY PARTS LIST - G AND G MFG.

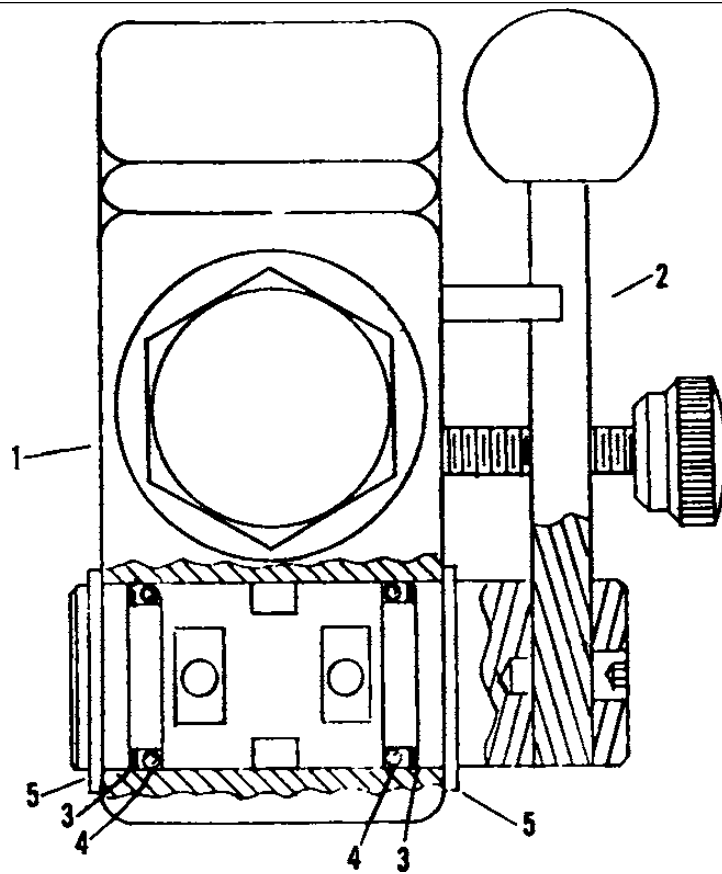


ITEM	PART NO.	QTY.	DESCRIPTION
1	3600227	1	1-3/8" x 21" Spline Snap Hitch Yoke
2	3600230	1	1-3/8-x21" Spline Snap Hitch Pin Kit
3	3600231	1	P.T.O. Repair Kit
4	3600232	1	Bar Weld Yoke for 1 -3/16" Square Shaft
5		1	1-3/16" Sq. Shafting w/3/16" Hole Shaft Length 20-1/2"
6		1	Torque Tubing 2-1/8" O.D. x 1-7/8" I.D. Tube Length 12-5/8"
7	3600233	1	2-11/16" Rd. inner Plastic Shield w/Small Notched Bell 13-13/16" Long
8	3600234	1	3" Rd. Outer Plastic Shield w/Small Notched Bell 14-1/2" Long
9	3600235	1	Bearing Shield Kit (Nylon Brg., Snap Ring & Thrust Washer)
10	3600236	1	Torque Tube Weldment
11	3600237	1	1 -3/4" Rd. Bore Clamp Yoke w/3/8"x3/16" Keyway & 3/ 8"-x16" Set Screw
12	6500085	1	Danger Warning Label for Outside Shield
13	CALL	1	Danger Warning Label for Inside
14		1	1-3/16" Square Slip Sleeve
15	3600228	1	Machine Half
16	3600229	1	Tractor Half
17	3600238	1	P.T.O. Shaft Complete

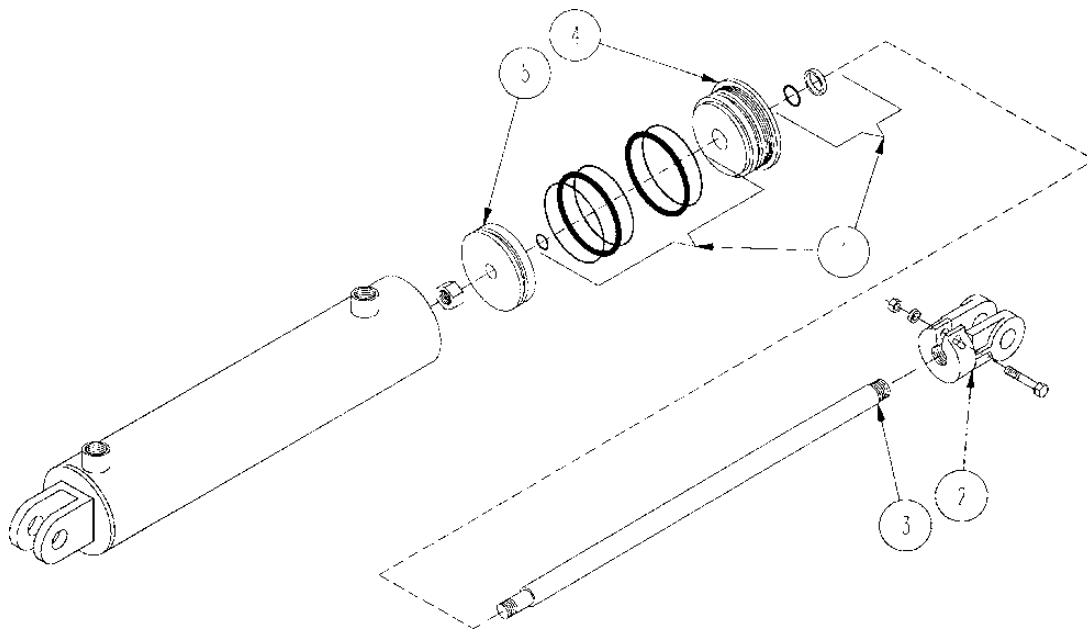
P.T.O. ASSEMBLY PARTS LIST - WEASLER MFG. SER. NO. HI 4395 & UP

ITEM	PART NO.	QTY.	DESCRIPTION
1	3600107	1	35RW UNIVERSAL JOINT AND TELESCOPING SHAFT ASSEMBLY WITH GUARD
2	3600108	1	JOINT AND TUBE WITH GAURD MACHINE 1/2 COMPLETE
3	3600079	1	YOKE, 1-3/4" RD.
4	3600042	2	REPAIR KIT
5	3600109	1	YOKE AND TUBE
6	3600047	2	BEARING RETAINER
7	3600052	1	NYLON BEARING
8	3600110	1	MALE GAURD TUBE, INNER
9	3600049	1	NYLON CETRALIZER
10	3600111	1	JOINT AND SHAFT HALF WITH GAURD, TRACTOR COMPLETE
11	3600112	1	YOKE AND SHAFT
12	3600084	1	O.D. YOKE ASSEMBLY, 1000 RPM
13	3600056	1	SAF-T-PIN AND SPRING KIT
14	3600113	1	FEMALE GUARD TUBE
15	3600048	1	NYLON BEARING





HYDRAULIC CYLINDER



FLOW CONTROL VALVE SER. NO.101 & UP

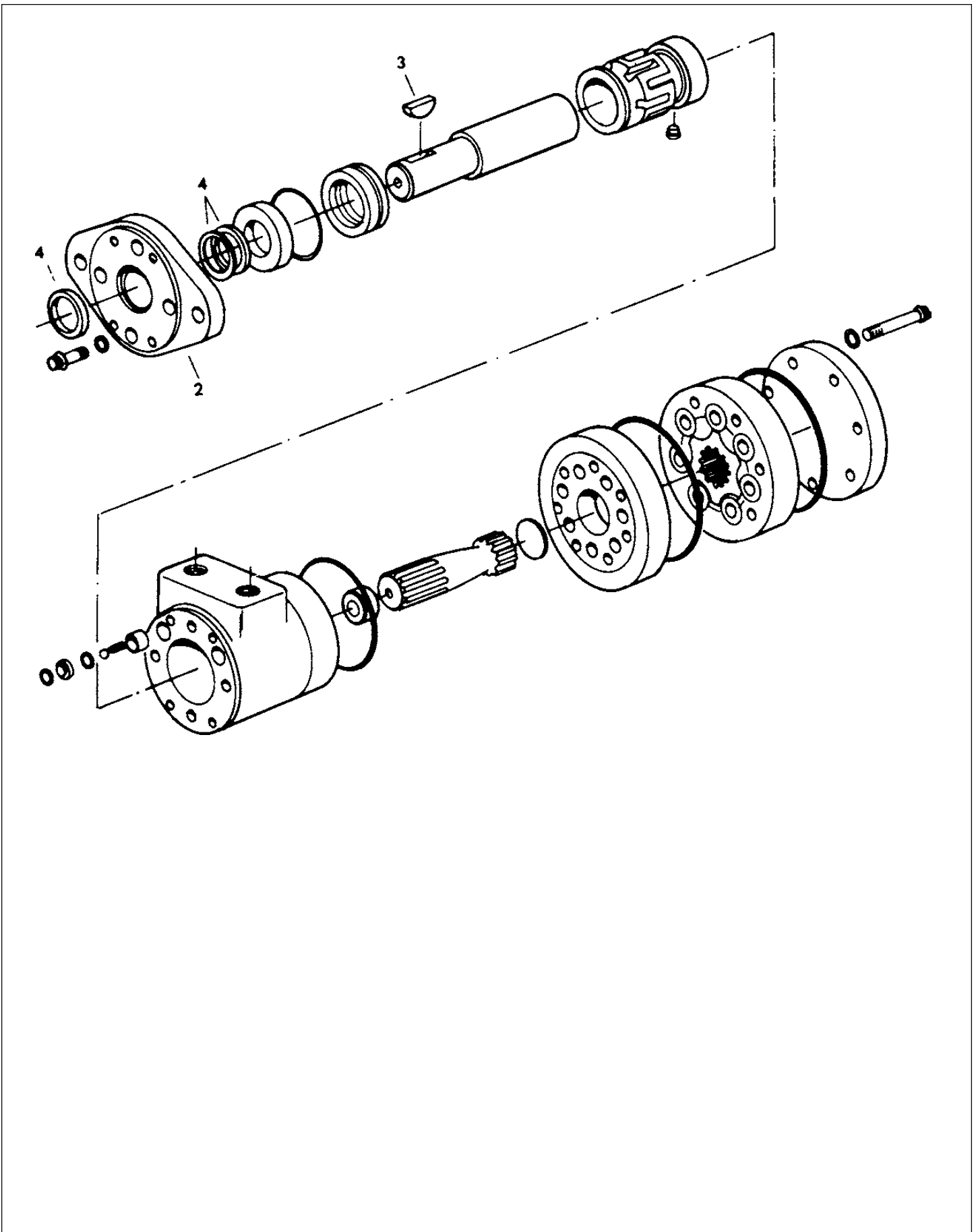
ITEM	PART NO.	QTY.	DESCRIPTION
1	3800036	1	Flow Control Valve
2	4000031	1	Handle Assembly
3	4000032	2	Backup Seal
4	4000033	2	O-Ring
5	4000034	2	Snap Ring

HYDRAULIC CYLINDER

WELDED CYLINDER

ITEM	PART NO.	QTY.	DESCRIPTION
1	4100105	1	Seal Kit
2	4100132	1	Yoke
3	4100043	1	Rod 1-1/2" X 16"
4	4100173	1	Rod End Cap 1-1/2" Bore
5	4100063	1	Piston
	4100027		Hydraulic Cylinder 3-1/2 x 16

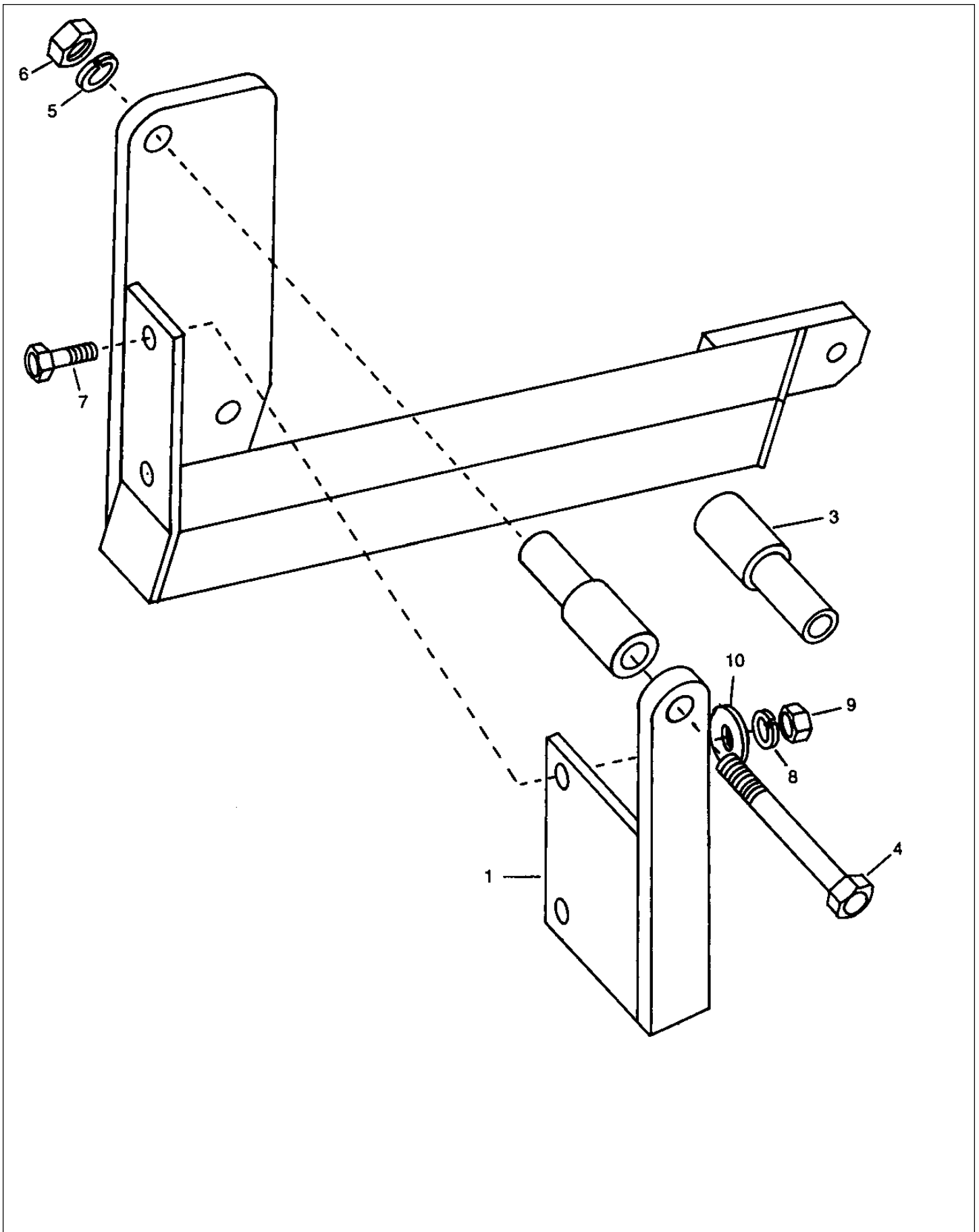
ORBIT MOTOR SER. NO. 4058 & UP



ORBIT MOTOR SER. NO. 4058 & UP

ITEM	PART NO.	QTY.	DESCRIPTION
2	3900002	1	Mounting Flange
4	7501038	1	Uniseal Kit 007-009
5	3900003	1	Orbit Motor M207
4	7501033		Seal Kit For 3900019 Motor
5	3900019		Mtr\Hyd\151-2088\Danfoss

BALE BUSTER QUICK TATCH SER. NO. HI 4395 & UP



BALE BUSTER QUICK TATCH SER. NO. HI 4395 & UP

ITEM	PART NO.	QTY.	DESCRIPTION
1	8100652	1	Quick Hitch Mount, Left (shown)
2	8100653	1	Quick Hitch Mount, Right
3	8100131	2	Reversible Adapter Bushing
4	4800189	2	1-1/8" x 9" Grade 5 Hex Bolt
5	5000025	2	1-1/8" Lock Washer
6	4900037	2	1-1/8" Hex Nut
7	4800010	4	5/8" x 2" Hex Bolt
8	5000003	4	5/8" Lock Washer
9	4900005	4	5/8" Hex Nut
10	5000002	4	5/8" Flat Washer

BALEBUSTER DECAL REQUIREMENTS



#1. 6500020



#2. 6500032



#3. 6500033



#5. 6500035



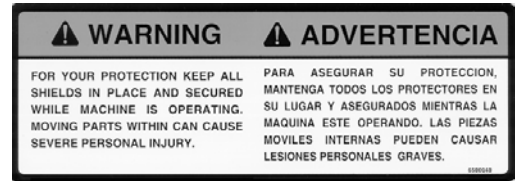
#6. 6500036



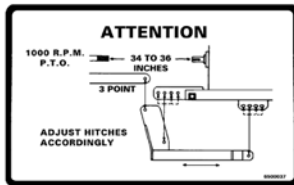
#4. 6500034



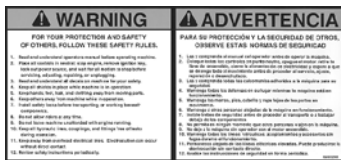
#8. 6500085



#9. 6500040



#7. 6500037



#10. 6500041



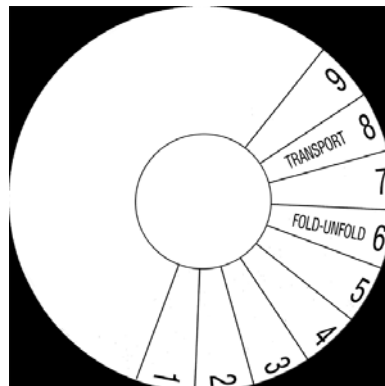
#11. 6500042



#12. 6500043



#13. 6500074



#15. 6500292



#14. 6500291

BALEBUSTER DECAL REQUIREMENTS

ITEM	PART NO.	QTY.	DESCRIPTION
	6500018		Decal\Kit\256;3.pt
1	6500020	2	Haybuster
2	6500032	1	Big
3	6500033	2	Bale Buster
4	6500034	3	Danger, Flying Hay
5	6500035	2	Danger, Rotating Flails
6	6500036	1	Bale Rotation
7	6500037	1	Attention, Adjust Hitches
8	6500085	1	Danger Rotating Drive Line
9	6500040	2	Warning, Keep All Shields In Place
10	6500041	1	Warning, For Your Protection
11	6500042	1	Keep Wheel Bolts Tight
12	6500043	2	Warning, No Riders
13	6500074	1	To Reduce Hay Spillage
14	6500291	1	DECAL\INFO\3\BLK\ARROW
15	6500292	1	DECAL\INFO\FOLD-UNFOLD
	6500267	3	Decal\Warn\2\Red\Reflector
	6500268	2	Decal\Warn\2\Amber\Reflector
	7500077	12 oz	Yellow Spray Paint
	7500092	Quart	Yellow Paint
	7500091	Gallon	Yellow Paint
	7500078	12 oz	Red Spray Paint
	7500105	Quart	Red Paint
	7500104	Gallon	Red Paint

BALEBUSTER DECAL LOCATIONS



6500074

6500036

6500034

6500033

6500034

6500032

6500040

6500035

6500041

6500043

6500034



6500033

6500020

6500032

6500042

6500035

6500040

6500043

