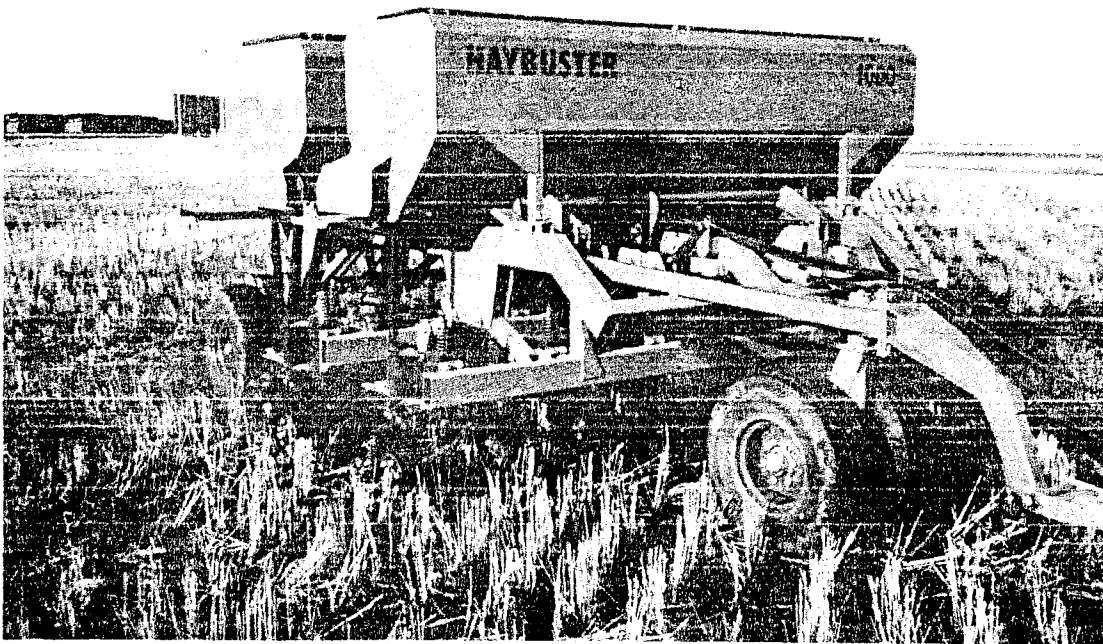


# **HAYBUSTER**

## **1000 SERIES DRILL PARTS BOOK**



## WARRANTY

### HAYBUSTER 1000 SERIES DRILL

Haybuster Mfg. Inc., warrants to the original purchaser for one year from purchase date that this product will be free from defects in material and workmanship when used as intended and under normal maintenance and operating conditions. This warranty is limited to the replacement of any defective part or parts returned to our factory in Jamestown, No. Dak. within thirty (30) days of failure.

This warranty shall become void if in Haybuster Mfg. Inc.'s judgement the machine has been subject to misuse, negligence, alterations, damaged by accident or lack of required normal maintenance, or if the product has been used for a purpose for which it was not designed.

All claims for warranty must be made through the dealer which originally sold the product and all warranty adjustments must be made through same.

This warranty does not apply to tires or bearings or any other trade accessories not manufactured by Haybuster Mfg. Inc. Buyer must rely solely on the existing warranty, if any, of these respective manufacturers.

Haybuster Mfg. Inc. shall **not** be held liable for damages of any kind, direct, contingent, or consequential to property under this warranty. Haybuster Mfg. Inc. cannot be held liable for any damages resulting from causes beyond its control. Haybuster Mfg. Inc. shall **not** be held liable under this warranty for loss of crops, or rental costs or any expense or loss for labor or supplies.

Haybuster Mfg. Inc. reserves the right to make changes in materials and/or designs of this product at any time without notice.

This warranty is void if Haybuster Mfg. Inc. does not receive a valid warranty registration card at its office in Jamestown, No. Dak. within 10 days from date of original purchase.

All other warranties made with respect to this product, either expressed or implied, are hereby disclaimed by Haybuster Mfg. Inc.

# SPECIFICATIONS - 1000 DRILL

## 7" SPACING

Overall Width:	123 inches
Seeding Width:	126 inches
End Transport Width:	192 inches
Height:	81 inches
Weight:	6800 lbs.
Tire Size:	9.5L x 14 Flotation
Hopper Capacity:	
Grain — Front	20 bu.
Granulated Fertilizer	1670 lbs.
Grain — Front & Rear	40 bu.
Granulated Fertilizer Banding:	2385 lbs.
Feed System:	Infinitely Adjustable Meter
Hoses:	Rubber Convuluted
Row Spacing:	7 inches
Openers: Double Disc	18 inches
Press Wheels:	Standard — Steel Optional — 2 x 13 Rubber Cap
Optional Equipment:	
1-2-3-4 Drill Hitch and Components	
Acre Counter	
Hitch Winch	
Ballast Tanks	
End Hitch	
Stabilizer, Rear	
Stabilizer, Front	

# SPECIFICATIONS - 1000 DRILL

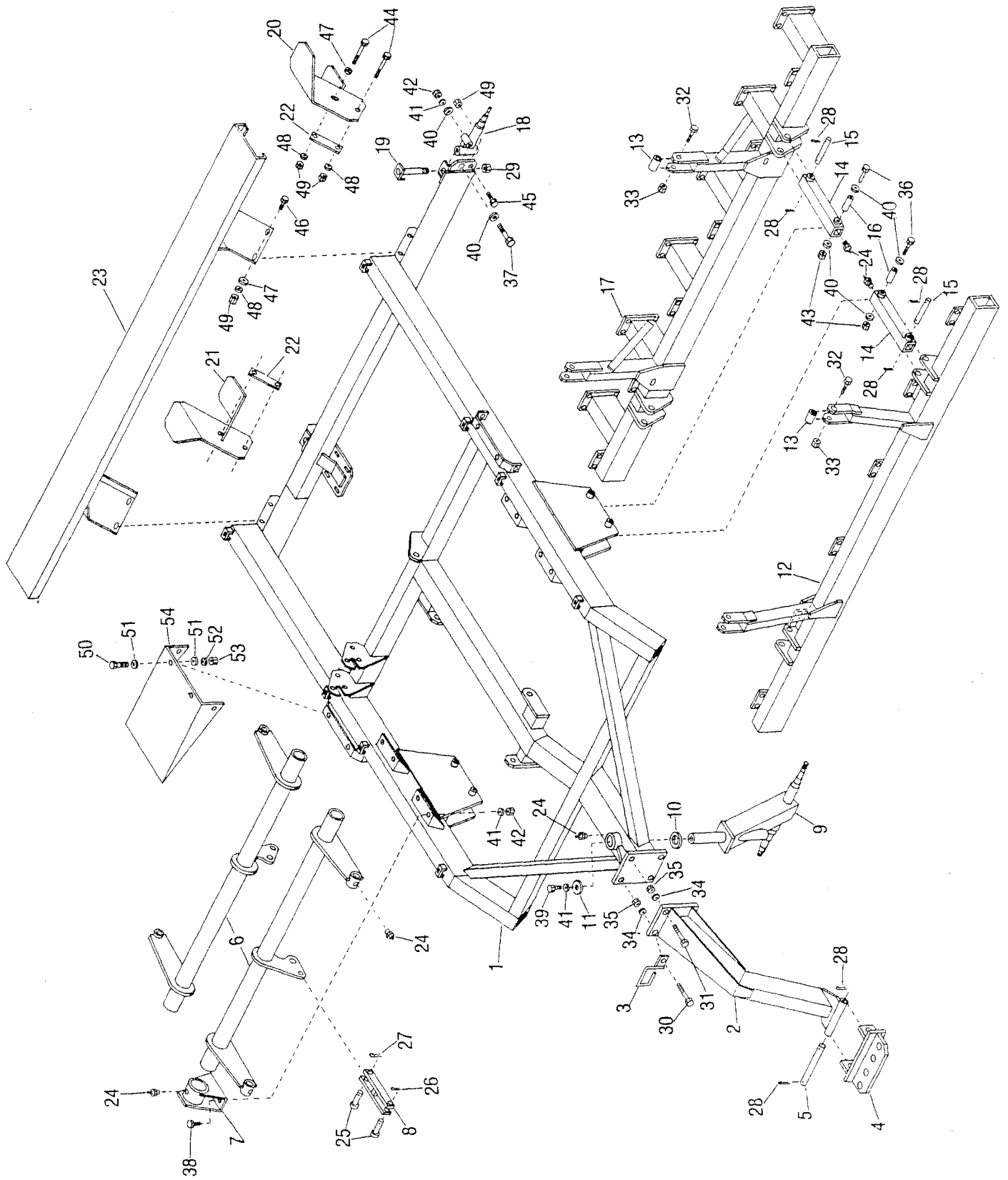
## PAIRED ROW

Overall Width:	114 inches
Seeding Width:	120 inches
End Transport Width:	192 inches
Height:	81 inches
Weight:	6000 lbs.
Tire Size:	9.5L x 14 Flotation
Hopper Capacity:	
Grain — Front	20 bu.
Granulated Fertilizer	1670 lbs.
Grain — Front & Rear	40 bu.
Granulated Fertilizer Banding:	2385 lbs.
Feed System:	Infinitely Adjustable Meter
Hoses:	Rubber Convuluted
Row Spacing:	Paired Row - 6-14 inches
Openers: Double Disc	18 inches
Press Wheels:	Standard — Steel Round Optional — 2 x 13 Rubber Cap
Optional Equipment:	
1-2-3-4 Drill Hitch and Components	
Acre Counter	
Hitch Winch	
Ballast Tanks	
End Hitch	
Stabilizer, Rear	
Stabilizer, Front	

# Table of Contents

	<b>Page</b>
Specifications .....	1-2
Table of Contents .....	3
Main Frame .....	4-5
Wheel and Hub Assembly .....	6-7
Drive Assembly .....	8-9
Tank Drive .....	10-11
Run Assembly Seeding and Banding .....	12-13
Low Clearance Run .....	14-15
Anhydrous Run .....	16-17
Standard Tank .....	18-19
Banding Tank .....	20-21
Seed and Fertilizer Setting Assembly .....	22
Ballast Bracket .....	23
Coulter Disk and Scraper Assembly .....	24
Press Wheel Assembly .....	25
Rear Stabilizer .....	26
Front Stabilizer .....	27
Tow Hitch .....	28-29
Hitch Lift .....	30-31
Single Hitch and 2 Drill Hitch .....	32
3 Drill Hitch .....	33
4 Drill Hitch .....	34
Single Hydraulics and 2 Drill Hydraulics .....	35
3 Drill Hydraulics .....	36
4 Drill Hydraulics .....	37
Acre Counter .....	38

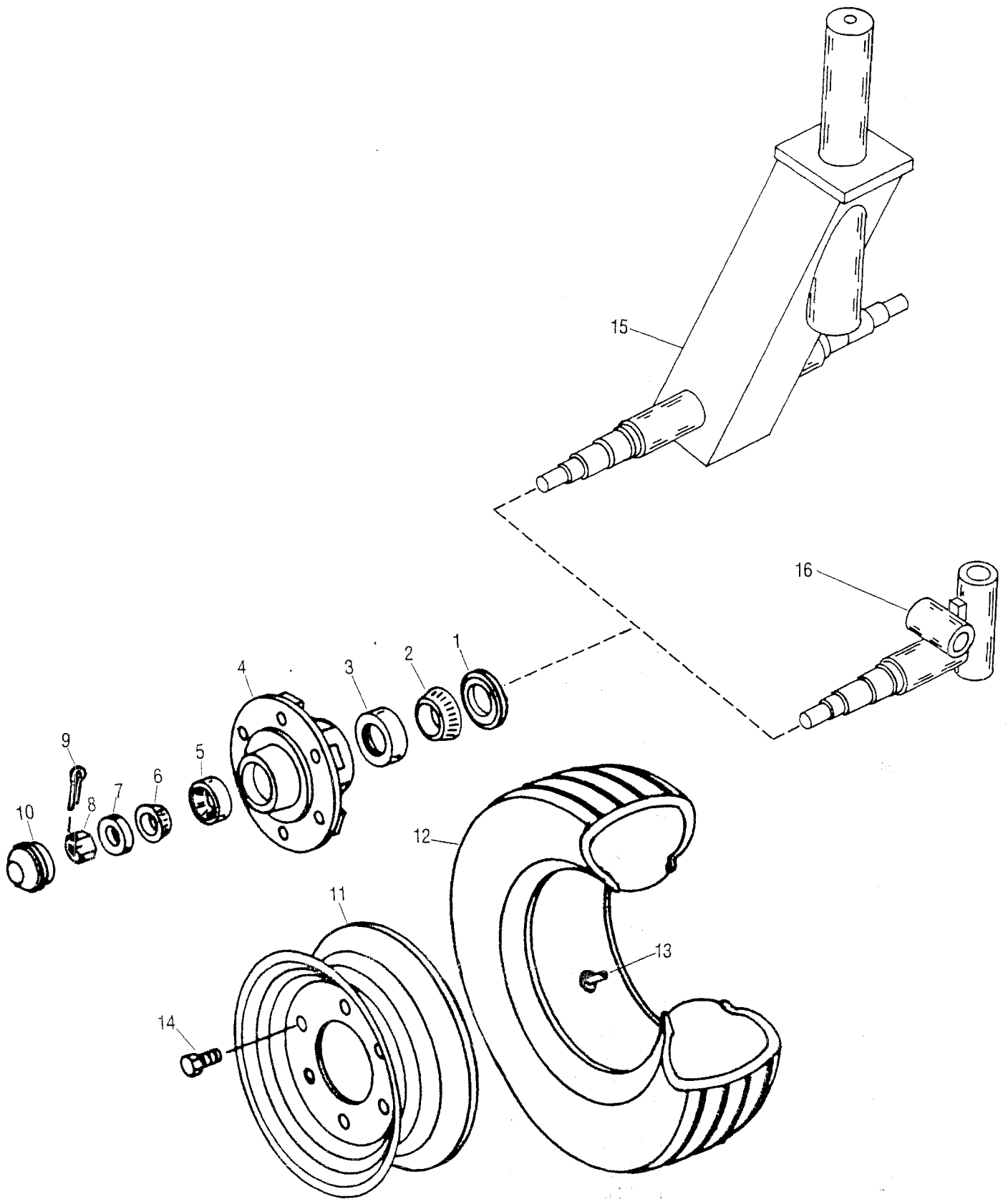
# 1000 DRILL MAIN FRAME



# 1000 DRILL MAIN FRAME

Item	Part No.	Qty.	Description
1	8400144	1	Main Frame
2	8400032	1	Goose Neck
3	8400033	1	Hose Minder
4	8400034	1	Hitch Block
5	8500008	1	Hitch Block Pin 1" x 10-1/4"
6	8400145	2	Torque Tube
7	8400146	4	Torque Tube Pivot
8	8400103	2	Hold Up Bar
9	8400133	1	Swivel Wheel Frame
10	8400147	1	Swivel Wheel Thrust Washer 2-1/2" I.D.
11	8400044	1	Swivel Wheel Retainer Washer
12	8400148	1	Banding Tool Bar Paired Row
	8400149		Banding Tool Bar 7" Spacing
13	8400150	4	Tool Bar Bushing 1-1/4" OD x 3/4" ID - 2" Long
14	8400151	4	Lift Links
15	8500021	4	Lift Link Pin 1" x 6"
16	8400152	4	Lift Link Bushing 1" OD x 7 GA, 5" Long
17	8400153	1	Seeding Tool Bar Paired Row
	8400154		Seeding Tool Bar 7" Spacing
18	8400134	2	Rear Wheel Spindle
19	8400042	2	Rear Wheel Pivot Bolt
20	8400155	1	Rear Step, L.H.
21	8400156	1	Rear Step, R.H.
22	8400157	2	Rear Step Strap
23	8400158	1	Walkway
24	3800041	17	Zerks 1/8" Pipe (Straight)
25	4800035	4	3/4" x 2" Clevis Pin
26	4800044	2	5/32" x 1-1/2" Cotter Pin
27	4800107	2	1/8" Hair Pin
28	4800103	10	1/4" x 2" Cotter Pin
29	4900015	2	1" N.C. Lock Nut
30	4800017	1	3/4" x 3" Bolt
31	4800115	3	3/4" x 2-1/2" Bolt
32	4800063	4	3/4" x 4" Bolt
33	4900013	4	3/4" Lock Nuts
34	5000012	4	3/4" Lock Washer
35	4900004	4	3/4" Nut
36	4800096	4	5/8" x 6" Bolt
37	4800158	2	5/8" x 4-1/2" Bolt
38	4800010	8	5/8" x 2" Bolts
39	4800106	1	5/8" x 1-1/2" Bolt
40	5000002	12	5/8" Flat Washer
41	5000003	11	5/8" Lock Washer
42	4900005	10	5/8" Nut
43	4900012	4	5/8" Lock Nut
44	4800141	4	1/2" x 4-1/2" Bolt
45	4800082	2	1/2" x 1-1/2" Bolt
46	4800018	4	1/2" x 1-1/4" Bolt
47	5000004	6	1/2" Flat Washer
48	5000006	8	1/2" Lock Washer
49	4900001	10	1/2" Nut
50	4800003	8	3/8" x 1" Bolt
51	5000001	16	3/8" Flat Washer
52	5000019	8	3/8" Lock Washer
53	4900002	8	3/8" Nut
54	8400159	2	Side Platforms

# 1000 DRILL WHEEL AND HUB ASSEMBLY



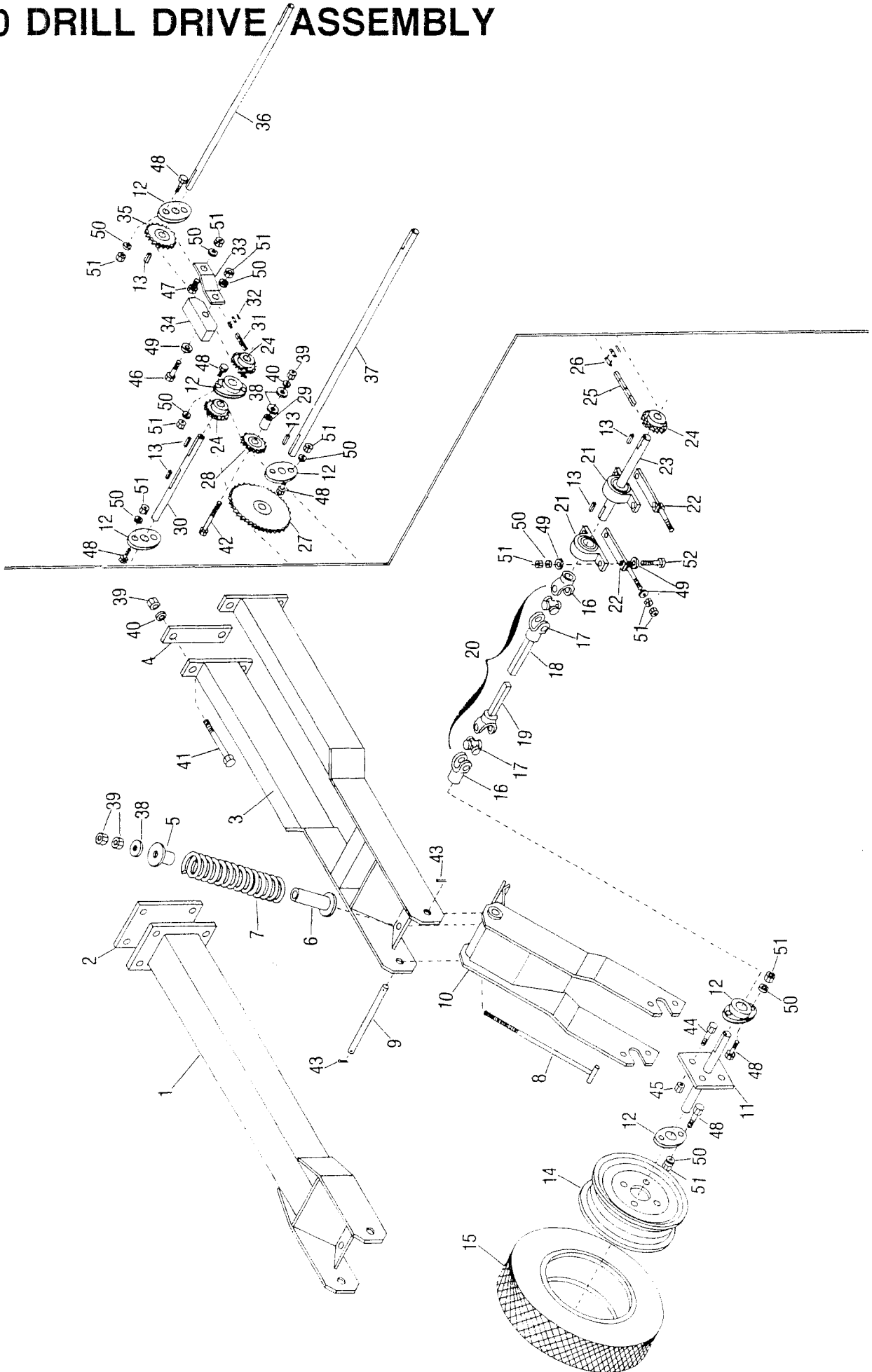


# 1000 DRILL WHEEL AND HUB ASSEMBLY

Item	Part No.	Qty.	Description
1	2900065	1	Grease Seal
2	2900066	1	Cone Inner
3	2900067	1	Cup Inner
4	2900068	1	Hub 6 Bolt
5	2900017	1	Cup Outer
6	2900018	1	Cone Outer
7	2900047	1	Washer
8	3000012	1	Nut
9	3000005	1	Cotter Pin
10	2900048	1	Dust Cap
11	2800001	1	Wheel 14" 6 Bolt
12	2600013	1	Tire 9.5L x 14
13	2700009	1	Tube
14	2900010	6	Wheel Bolt
15	8400133	1	Swivel Wheel Frame
16	8400134	1	Rear Wheel Spindle Weldment

**Note: Items 15, 16 Also Found In Main Frame Page 1 and 2**

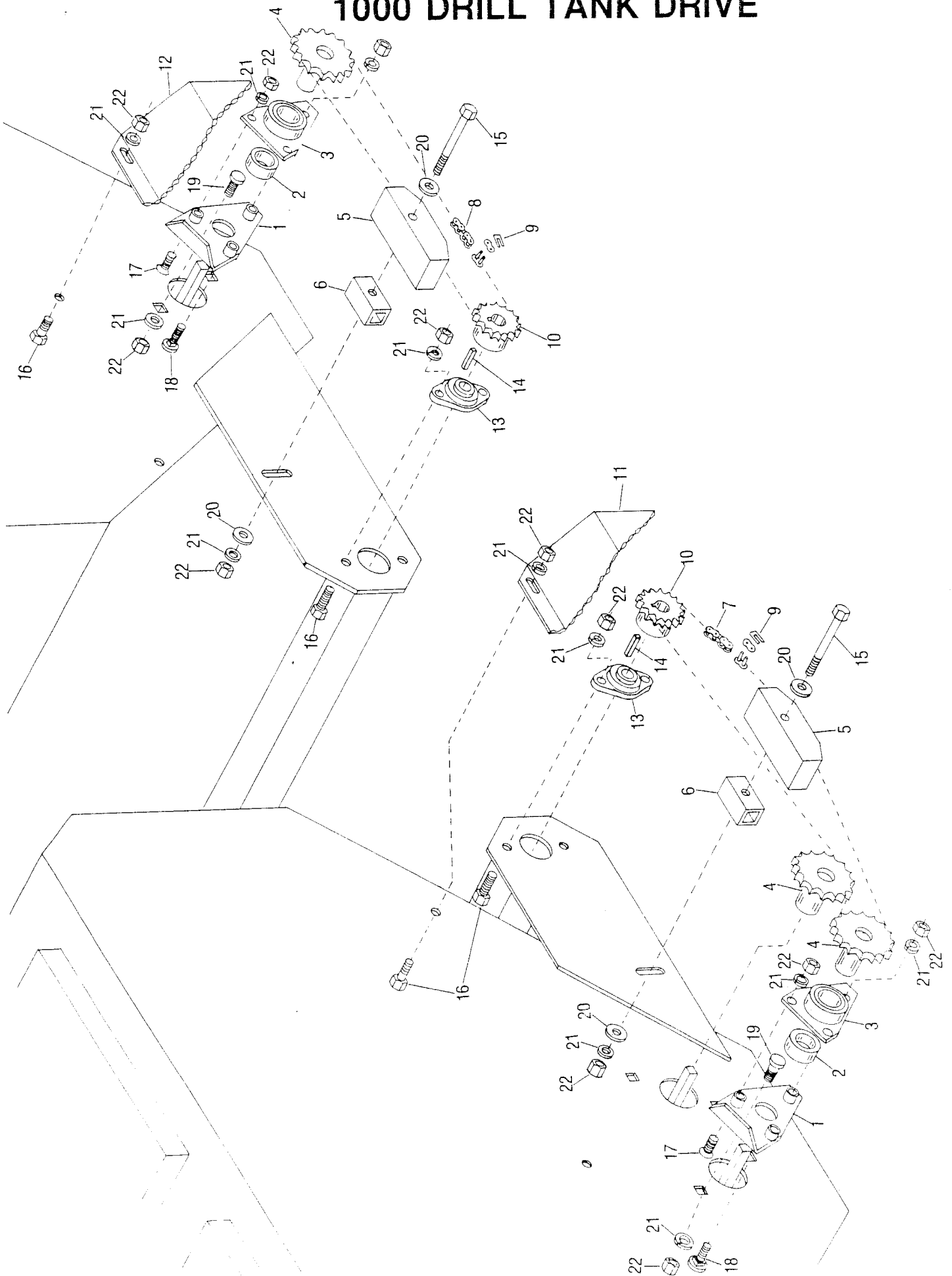
# 1000 DRILL DRIVE ASSEMBLY



# 1000 DRILL DRIVE ASSEMBLY

Item	Part No.	Qty.	Description
1	8400135	1	Drive Wheel Mount Paired Row
2	8400136	1	Drive Wheel Mount Plate Paired Row
3	8400137	1	Drive Wheel Mount 7" Spacing
4	8400138	2	Drive Wheel Mount Straps 7" Spacing
5	8400026	2	Spring Guide (Short)
6	8400025	2	Spring Guide (Long)
7	6100039	2	Spring
8	8400139	2	Spring Rod
9	8500018	1	Pin 1" x 8-3/8"
10	8400140	1	Drive Wheel Fork
11	8500005	1	Drive Wheel Shaft
12	1900009	6	1" Cast Flange Bearing
13	6200005	6	1/4" Key - 1-1/2" Long
14	2800018	1	Wheel 12" - 4 Bolt
15	2600019	1	Tire 4.80 x 12 Stud Tread
16	3600103	2	GRW 1" Yoke
17	3600104	2	GRW Cross and Brg.
18	3600105	1	LGW Tube w/Yoke
19	3600106	1	LGW Shaft w/Yoke
20	3600102	1	LGW Power Shaft Comp.
21	1800003	2	1" Pillow Block Bearings
22	8400141	2	Chain Tightener (Bearing Slides)
23	8500019	1	Shaft 1" x 11"
24	1000029	3	5014 Sprocket 1" Bore
25	1100124	1	2050 Chain - 97 Links
26	1100111	1	2050 Conn. Link
27	1000062	1	5036 x 1" Sprocket
28	1000039	1	Idler Sprocket
29	8400142	1	Idler Spacer 1" OD x 1-1/4" Long
30	8500020	1	Acre Counter Shaft 1" x 12-3/4"
31	1100053	1	No. 50 Chain 45 Links
32	1100059	1	No. 50 Connector Link
33	8400143	1	Idler Block Mount
34	2000016	1	Wood Idler Block
35	1000065	1	5018 Sprocket 1" Bore
36	8500022	1	Shaft 1" x 25-1/2" Banding Tank
37	8500023	1	Shaft 1" x 29-3/4" Standard Tank
38	5000002	4	5/8" Flat Washer
39	4900005	9	5/8" Nuts
40	5000003	5	5/8" Lock Washer
41	4800032	4	5/8" x 5" Bolt
42	4800054	2	5/8" x 3-1/2" Bolt
43	4800103	2	1/4" x 2" Cotter Pin
44	4800082	4	1/2" x 1-1/2" Bolt
45	4900014	4	1/2" Lock Nut
46	4800029	1	3/8" x 2-1/2" Bolt
47	4800053	1	3/8" x 1" Bolt
48	4800098	12	3/8" x 1-1/4" Bolt
49	5000001	9	3/8" Flat Washer
50	5000019	18	3/8" Lock Washer
51	4900002	18	3/8" Hex Nut
52	4800146	4	3/8" x 2" Bolt

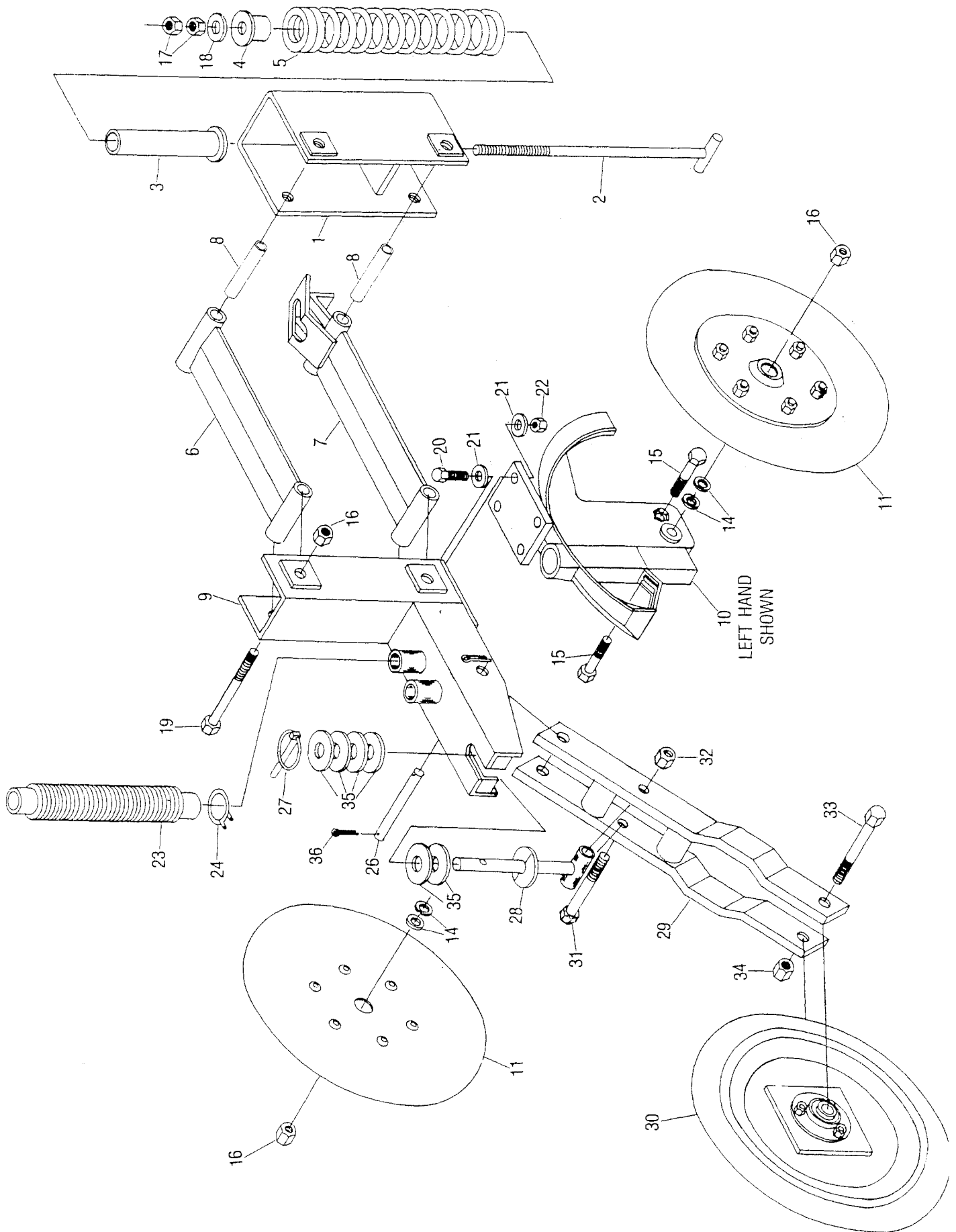
# 1000 DRILL TANK DRIVE



# 1000 DRILL TANK DRIVE

Item	Part No.	Qty.	Description
1	8400074	3	Sealer Plate
2	2200002	3	1-1/4" ID Lock Collar
3	8400070	3	Bracket w/Brg. (Complete)
4	8400071	3	Drive Sprocket w/Sq. Hole Sleeve
5	2000016	2	Wood Block Idler
6	8400174	2	Spacer 1" x 1" 2" Long
7	1100125	1	No. 50 Chain 81 Links, Rear Tank
8	1100126	1	No. 50 Chain 70 Links, Front Tank
9	1100059	2	No. 50 Chain Conn. Link
10	1000029	2	5014 Sprocket
11	8400175	1	Drive Shield Rear Tank
12	8400176	1	Drive Shield Front Tank
13	1900010	2	1" Cast Flangette
14	6200005	2	1/4" x 1-1/2" Key
15	4800197	2	3/8" x 3-1/2" Bolt
16	4800098	8	3/8" x 1-1/4" Bolt
17	4800167	6	3/8" x 1-1/4" Socket Head Screw
18	4800168	3	3/8" x 1-3/4" Carriage Bolt
19	4800053	3	3/8" x 1" Carriage Bolt
20	5000001	4	3/8" Flat Washer
21	5000019	22	3/8" Lock Washer
22	4900002	22	3/8" Hex Nut

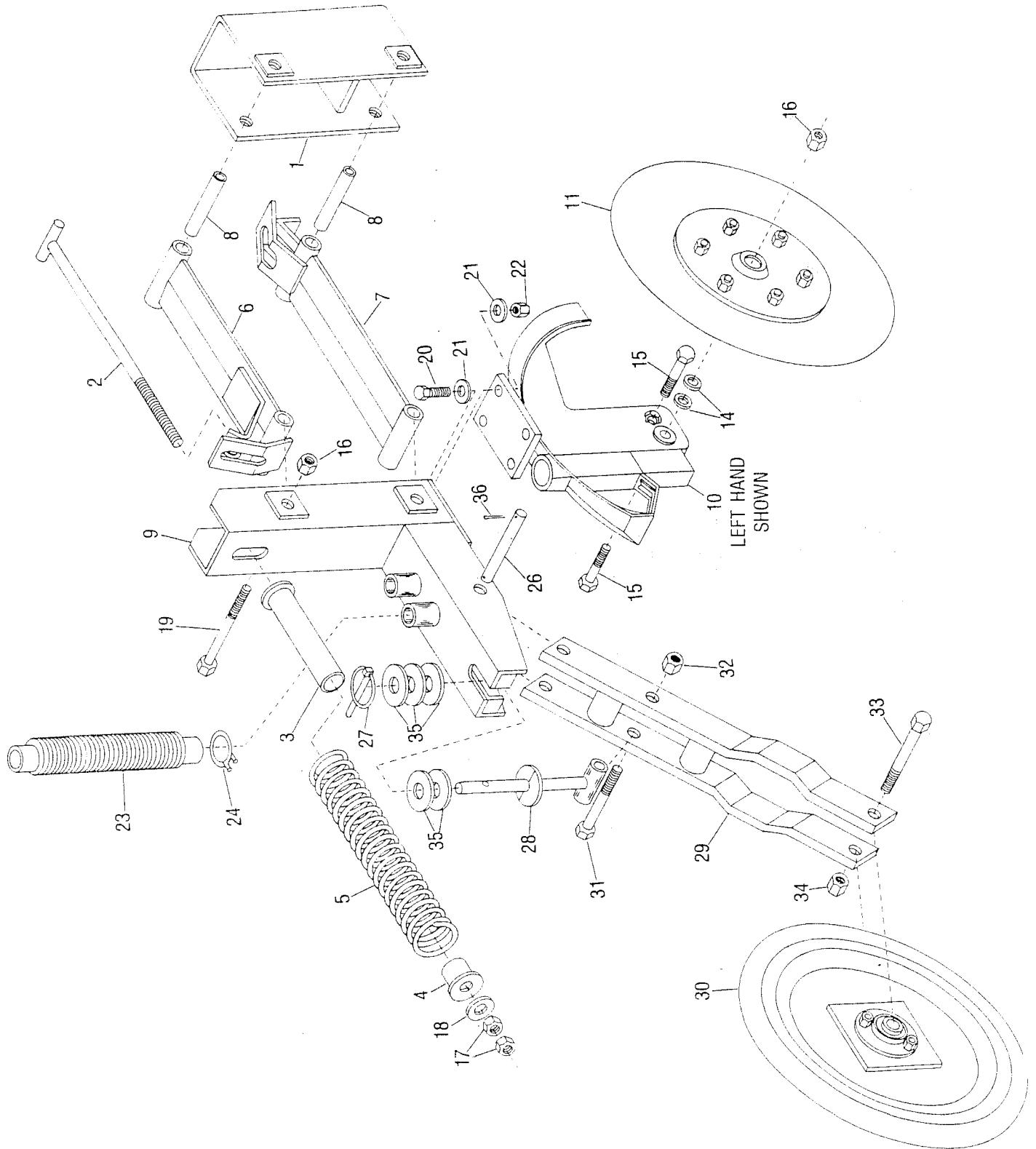
# RUN ASSEMBLY SEEDING AND BANDING RUN



# RUN ASSEMBLY SEEDING AND BANDING RUN

Item	Part No.	Qty.	Description
		Per Run	
1	8400046	1	Run Front Frame
2	8400047	1	Spring Rod
3	8400025	1	Spring Guide (Long)
4	8400026	1	Spring Guide (Short)
5	6100039	1	Spring Seeding Run
	6100041	1	Spring Banding Run
6	8400164	1	Upper Link
7	8400165	1	Lower Link
8	8400167	4	Lift Link Bushings
9	8400168	1	Run Rear Frame
10	7500132	1	Run Boot No. 50 Left Hand shown
10A	7500131		Run Boot No. 52 Right Hand
11	7500129	2	18" Coultter (Complete) See Page 24
12	7500130	1	Scraper (Complete) L.H. not shown see page 24
13	7500133	1	Scraper (Complete) R.H. not shown see page 24
14	5000009	4	Shim Washer
15	4800159	2	5/8" x 2-1/4" G5 Narrow Head (Special)
16	4900012	6	5/8" Lock Nut
17	4900005	2	5/8" Hex Nut
18	5000002	1	5/8" Flat Washer
19	4800032	4	5/8" x 5" Bolt
20	4800040	4	7/16" x 1-1/2" Bolt
21	5000016	8	7/16" Flat Washer
22	4900035	4	7/16" Lock Nut
23	7500097	2	Hose No. 12125
24	7500098	4	Hose Clamps R-24
<b>The Following Parts Are Used On Seeding Runs Only</b>			
26	8500011	1	Packer Wheel Pivot Pin
27	7500044	1	5/16" Klik Pin
28	8400169	1	Packer Wheel Depth Rod
29	8400170	1	Packer Wheel Frame
30	7500066	1	Packer Wheel (Complete) See Page 25
31	4800006	1	1/2" x 4" Bolt
32	4900014	1	1/2" Lock Nut
33	4800063	1	3/4" x 4" Bolt
34	4900013	1	3/4" Lock Nut
35	5000005	9	3/4" Flat Washer
36	4800157	2	3/16" x 2" Cotter Pin

# LOW CLEARANCE RUN ASSEMBLY SEEDING AND BANDING

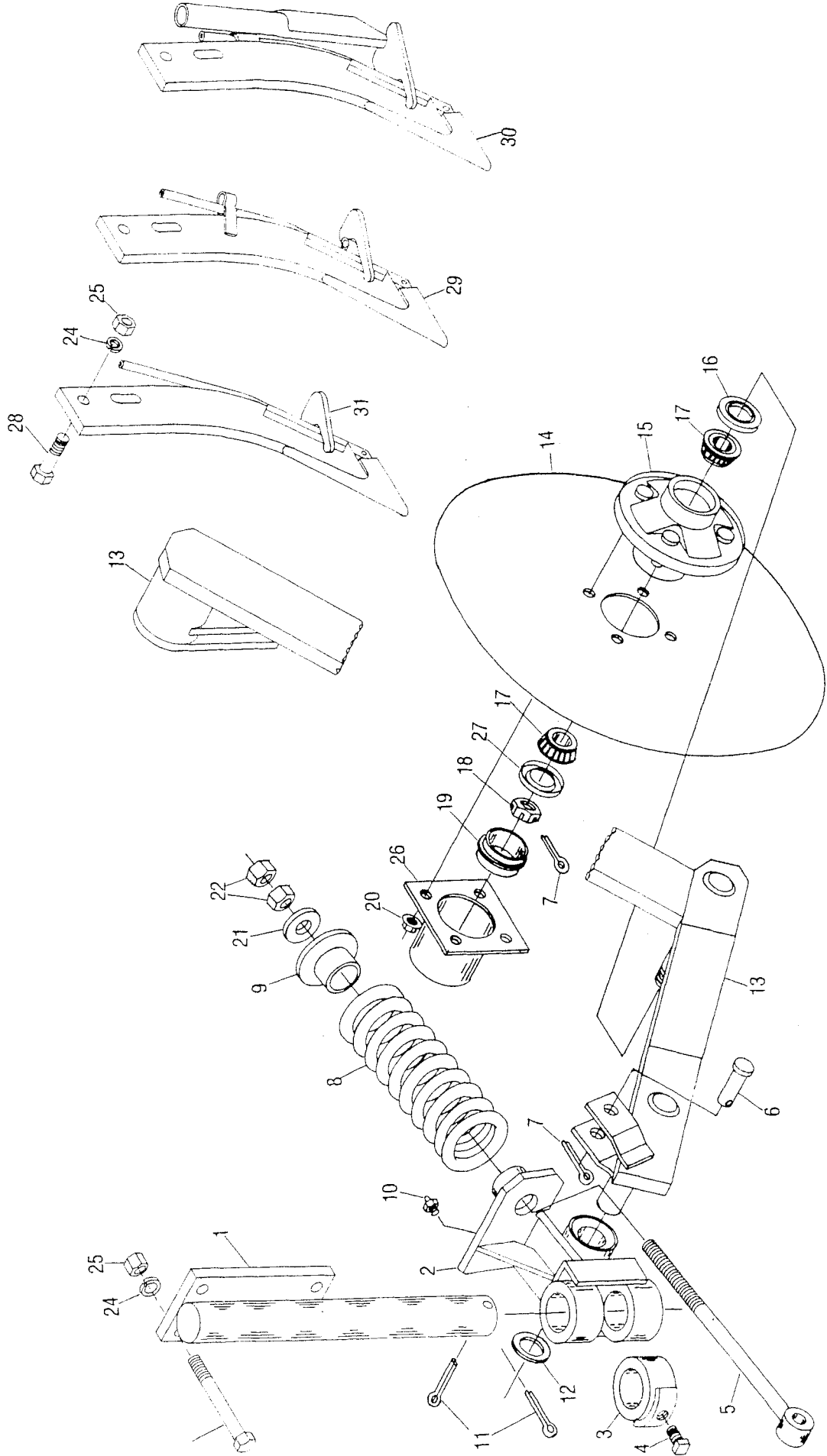




# LOW CLEARANCE RUN ASSEMBLY SEEDING AND BANDING

Item	Part No.	Qty.	Description
		<b>Per Run</b>	
1	8400046	1	Run Front Frame
2	8400047	1	Spring Rod
3	8400025	1	Spring Guide (Long)
4	8400026	1	Spring Guide (Short)
5	6100039	1	Spring Seeding Run
	6100041	1	Spring Banding Run
6	8400171	1	Upper Link (Low Clearance)
7	8400165	1	Lower Link
8	8400167	4	Lift Link Bushing
9	8400172	1	Run Rear Frame (Low Clearance)
10	7500132	1	Boot No. 50 Left Hand shown
10A	7500131		Run Boot No. 52 Right Hand
11	7500129	2	18" Coultter (Complete) See Page 24
12	7500130	1	Scraper (Complete) L.H. not shown see page 24
13	7500133	1	Scraper (Complete) R.H. not shown see page 24
14	5000009	4	Shim Washer
15	4800159	2	5/8" x 2-1/4" G5 Narrow Head (Special)
16	4900012	6	5/8" Lock Nut
17	4900005	2	5/8" Hex Nut
18	5000002	1	5/8" Flat Washer
19	4800032	4	5/8" x 5" Bolt
20	4800040	4	7/16" x 1-1/2" Bolt
21	5000016	8	7/16" Flat Washer
22	4900035	4	7/16" Lock Nut
23	7500097	2	Hose No. 12125
24	7500098	4	Hose Clamp R-24
<b>The Following Parts Are Used On Seeding Runs Only</b>			
26	8500011	1	Packer Wheel Pivot Pin
27	7500044	1	5/16" Klik Pin
28	8400169	1	Packer Wheel Depth Rod
29	8400170	1	Packer Wheel Frame
30	7500066	1	Packer Wheel (Complete) See Page 25
31	4800006	1	1/2" x 4" Bolt
32	4900014	1	1/2" Lock Nut
33	4800063	1	3/4" x 4" Bolt
34	4900013	1	3/4" Lock Nut
35	5000005	9	3/4" Flat Washer
36	4800157	2	3/16" x 2" Cotter Pin

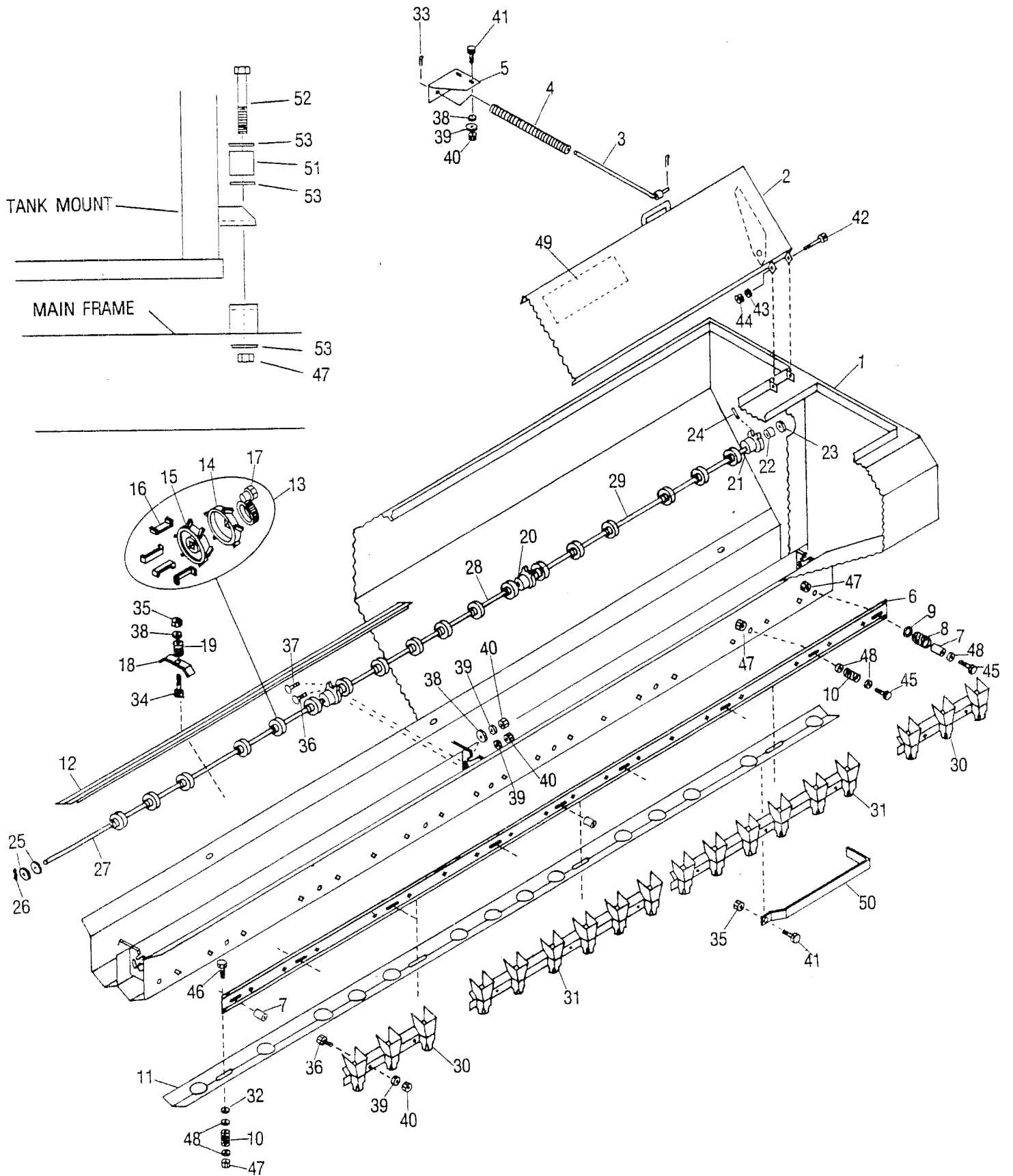
# AUTOMATIC RESET ANHYDROUS



# AUTOMATIC RESET ANHYDROUS COULTER

Item	Part No.	Qty.	Description
1	8400160	1	Coulter Shank
2	8300275	1	Pivot Bracket
3	8300267	1	Adjustable Bushing
4	4800075	1	5/8" x 1" Sq. Head Set Screw
5	8300268	1	Spring Rod
6	4800035	1	3/4" x 2" Leitzke Pin
7	4800050	2	3/16" x 1-1/2" Cotter Pin
8	6100021	1	Spring 3-1/2" x 9-1/2"
9	8300269	1	Spring Retainer
10	3800041	1	1/8" Straight Zerk
11	4800066	2	5/16" x 2" Cotter Pin
12	5000007	1	1-1/4" Narrow Rim Machine Bushing
13	8400161	1	Coulter Arm
14	7500099	1	18" Coulter
15	2900034	1	Hub
16	2900031	1	Seal
17	2900032	2	Bearings
18	2900036	1	Nut
19	2900037	1	Dust Cap
20	4900018	4	Flange Nuts 1/2" N.F.
21	5000005	1	3/4" Flat Washer
22	4800004	2	3/4" Hex Nuts
23	4800041	4	1/2" x 5" Grade 5 Bolt
24	5000006	6	1/2" Lock Washer
25	4900001	6	1/2" Hex Nuts
26	8300271	1	Hub Shield
27	2900035	1	Washer
28	4800114	2	1/2" x 2" Bolt
29	8400162		Anhydrous Knife with Liquid Fertilizer
30	8400163		Anhydrous Knife with Dry Fertilizer
31	8400125		Anhydrous Knife

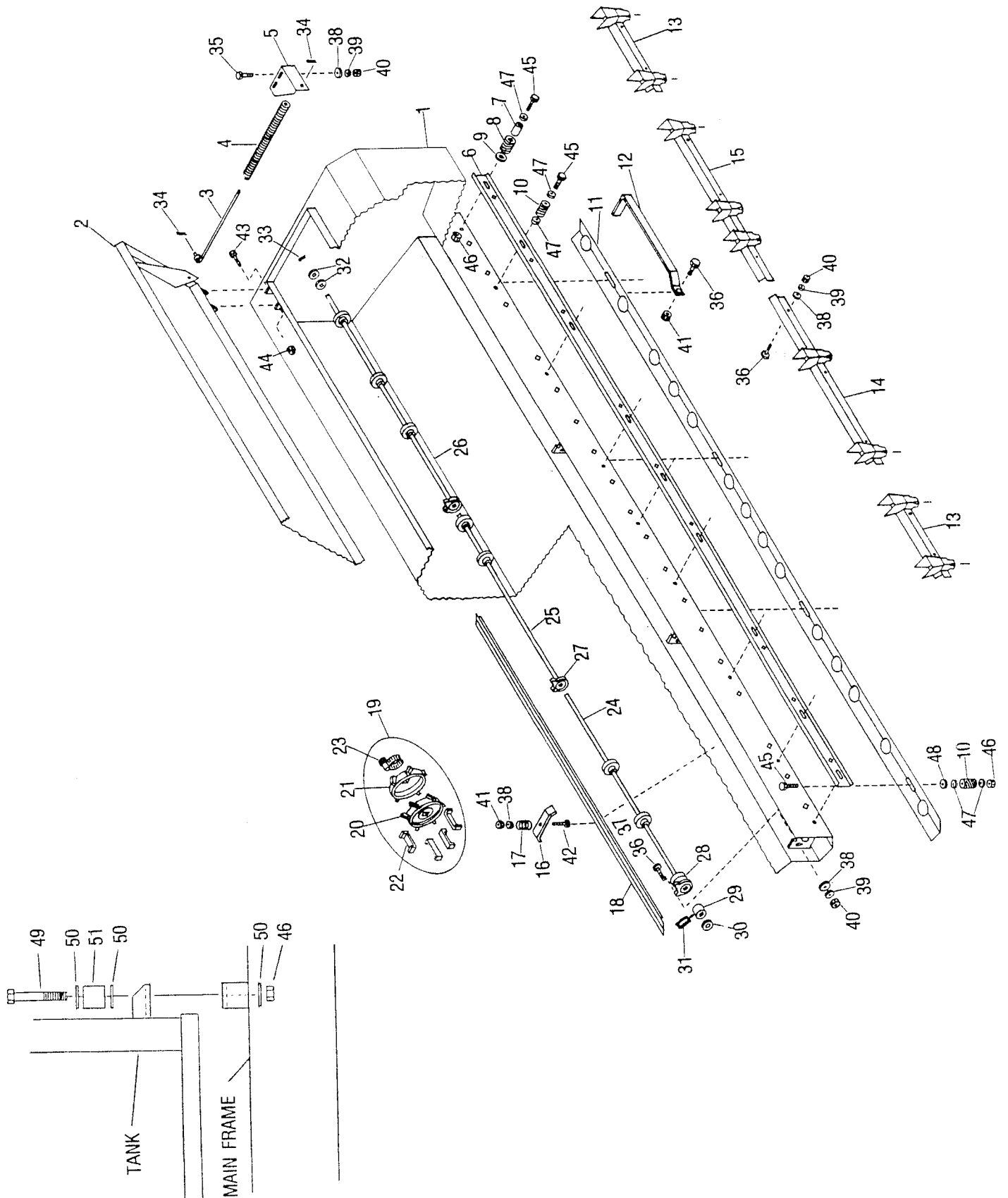
# TANK ASSEMBLY



# TANK ASSEMBLY

Item	Part No.	Qty.	Description
1	8400173	1	Tank Weldment
2	8400107	2	Tank Cover
3	8400003	4	Tank Cover Spring Rod
4	6100017	4	Tank Cover Spring
5	8400004	2	Tank Cover Spring Retainer L.H.
	8400005	2	Tank Cover Spring Retainer R.H.
6	8400114	2	Control Plate, 7" Spacing
	8400115	2	Control Plate, Paired Row
7	8400007	6	Control Plate Guide
8	6100031	6	Control Plate Guide Spring
9	5000033	6	Guide Washer
10	6100002	20	Springs
11	8400110	2	Clean Out Plate
12	8400111	4	Feed Wheel Covers
13	7500106	36	Feed Wheel Complete
14	7500007	36	Feed Wheel Left Half (Marked L)
15	7500008	36	Feed Wheel Right Half (Marked R)
16	7400066	144	Feed Wheel Retainer Clips
17	7500107	36	Hose Clamp
18	8400011	6	Feed Wheel Cover Hold Down
19	6100002	6	Wheel Cover Hold Down Spring
20	7500110	4	Cast Bracket w/Brg. Complete
21	7500108	4	Cast Bracket
22	7500109	4	Steel Brg. w/Hole
23	5000036	4	Retainer Washer
24	4800169	2	1/4" x 1-1/8" Rolled Pin
25	5000027	4	Washer, 1-3/8 OD x 7/8 ID
26	4800050	2	3/16" x 1-1/2" Cotter Key
27	8500017	2	Shaft Right Side, 38-7/16"
28	8500014	2	Shaft Center, 33-1/16"
29	8500016	2	Shaft Left Side, 34-1/2"
30	8400099	4	Seed Cup End Section
31	8400100	4	Seed Cup Center Section
32	8400016	8	1/2" Flat Washer w/40 Degree Brk.
33	4800044	8	5/32" x 1-1/2" Cotter Key
34	4800156	6	3/8" x 3" Hex Bolt
35	4900023	7	3/8" Plastic Insert Lock Nut
36	4800053	26	3/8" x 1" Carriage Bolt
37	4800012	6	3/8" x 1-1/4" Carriage Bolt
38	5000001	20	3/8" Flat Washer
39	5000019	40	3/8" Lock Washer
40	4900002	40	3/8" Hex Nut
41	4800003	9	3/8" x 1" Hex Bolt
42	4800198	6	5/16" x 3-3/4" Bolt
43	5000022	6	5/16" Lock Washer
44	4900011	6	5/16" Lock Nut
45	4800082	18	1/2" x 1-1/2" Bolt
46	4800007	8	1/2" x 2" Bolt
47	4900014	26	1/2" Top Lock Nut
48	5000016	46	7/16" Flat Washer
49	6500022	1	Calibration Decal, 7" Spacing
	6500027	1	Calibration Decal, Paired Row
50	8400112	2	Clean Out Handle
51	7500134	4	Grommet
52	4800068	4	1/2" x 3" Bolt
53	5000004	12	1/2" Flat Washer

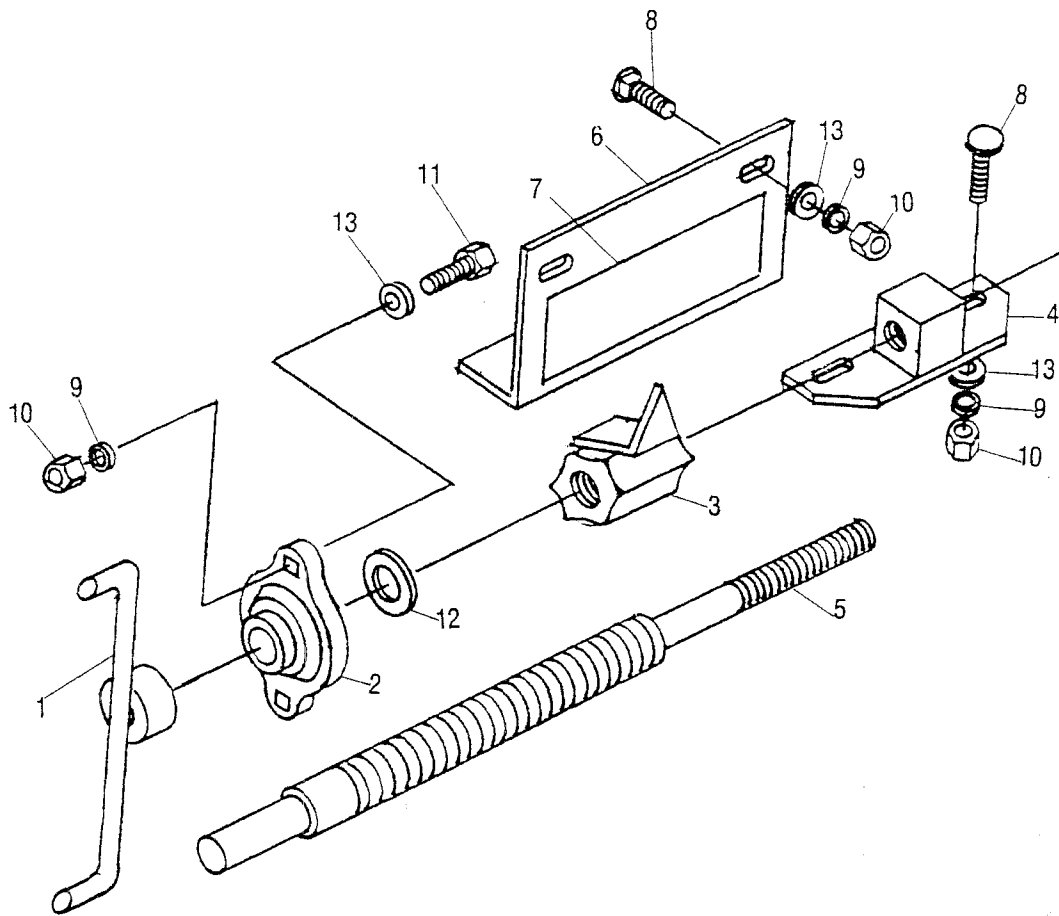
# BANDING TANK ASSEMBLY



# BANDING TANK ASSEMBLY

Item	Part No.	Qty.	Description
1	8400198	1	Banding Tank Weldment
2	8400107	1	Tank Cover
3	8400003	2	Tank Cover Spring Rod
4	6100017	2	Tank Cover Spring
5	8400005	1	Tank Cover Spring Retainer RH
	8400004	1	Tank Cover Spring Retainer LH
6	8400214	1	Control Plate 7" Spacing Banding
	8400215	1	Control Plate, Paired Row Banding
7	8400007	3	Control Plate Guide
8	6100031	3	Control Plate Guide Spring
9	5000033	3	Guide Washer
10	6100002	10	Springs
11	8400110	1	Clean Out Plate
12	8400112	1	Clean Out Plate Handle
13	8400089	2	Seed Cups End Section
14	8400199	1	Seed Cups Left Center Section
15	8400200	1	Seed Cups Right Center Section
16	8400011	3	Wheel Cover Hold Down
17	6100002	3	Wheel Cover Hold Down Spring
18	8400111	2	Feed Wheel Cover
19	7500106	9	Feed Wheel Complete
20	7500007	9	Feed Wheel - Left Half (Marked L)
21	7500008	9	Feed Wheel - Right Half (Marked R)
22	7400066	36	Wheel Retainer Clips
23	7500107	9	Hose Clamp
24	8500016	1	Shaft - Left Side 34-1/2"
25	8500014	1	Shaft Center 33-1/16"
26	8500017	1	Shaft - Right Side 38-7/16"
27	7500110	3	Cast Bracket w/Bearing Complete
28	7500108		Cast Bracket
29	7500109		Steel Bearing w/Hole
30	5000036		Retainer Washer
31	4800169	1	1/4" x 1-1/8" Rolled Pin
32	5000027	2	Washer 1-3/8" OD x 7/8" ID - 18 GA
33	4800050	1	3/16" x 1-1/2" Cotter Key
34	4800044	4	5/32" x 1-1/2" Cotter Key
35	4800003	4	3/8" x 1" Hex Bolt
36	4800053	13	3/8" x 1" Carriage Bolt
37	4800012	3	3/8" x 1-1/4" Carriage
38	5000001	21	3/8" Flat Washer
39	5000019	19	3/8" Lock Washer
40	4900002	23	3/8" Hex Nut
41	4900023	4	3/8" Lock Nuts
42	4800156	3	3/8" x 3" Hex Bolt
43	4800198	3	5/16" x 3-3/4" Bolt
44	4900011	3	5/16" Lock Nut
45	4800007	13	1/2" x 2" Hex Bolt
46	4900014	17	1/2" Lock Nut Self Locking
47	5000016	23	7/16" Flat Washer
48	8400016	4	1/2" Flat Washer w/40 Degree Brk
49	4900068	4	1/2" x 3" Hex Bolt
50	5000004	12	1/2" Flat Washers
51	7500134	4	Grommet

# SEED AND FERTILIZER SETTING ASSEMBLY

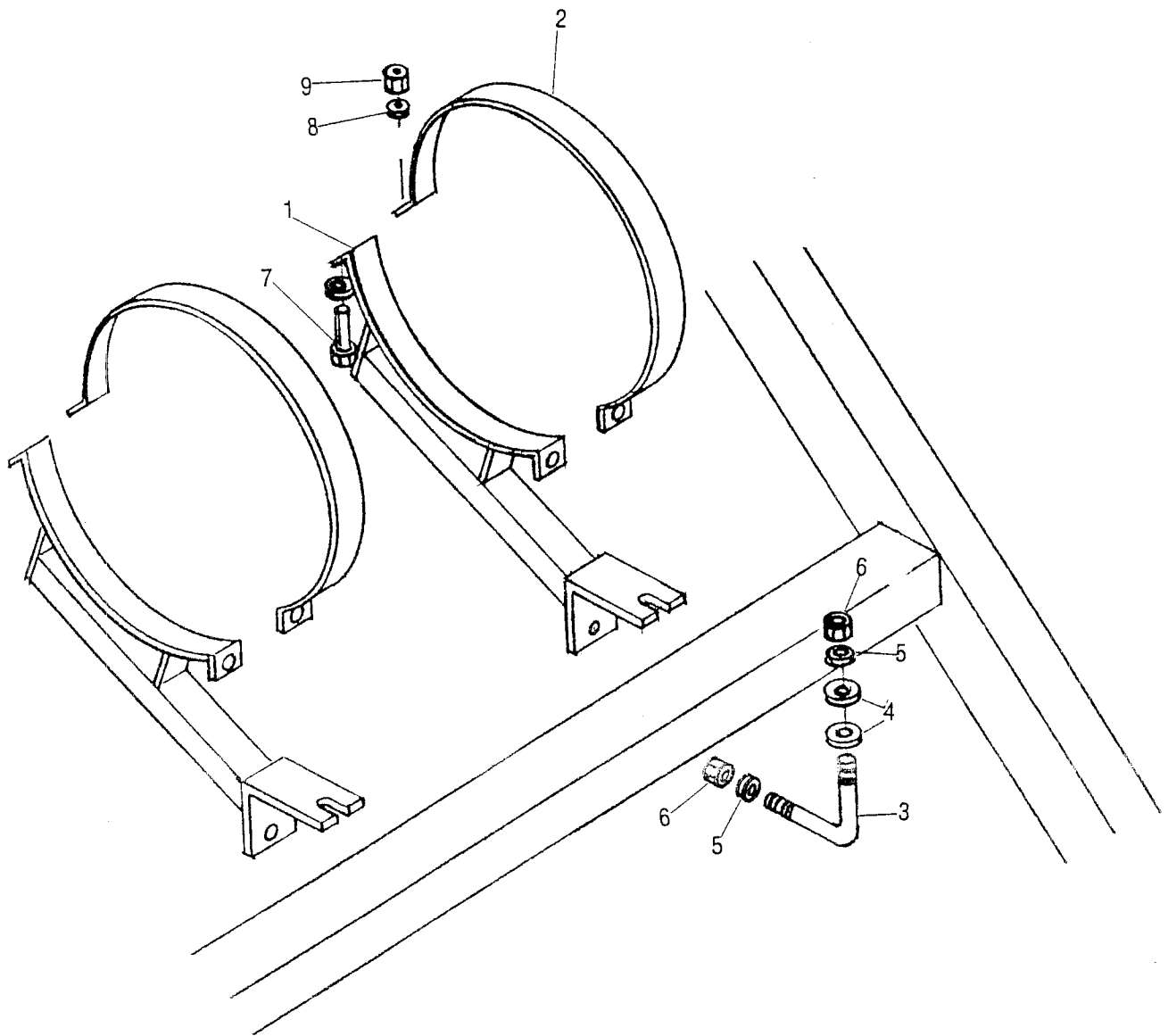


Item	Part No.	Qty.	Description
		Per Drill	
1	8400060	2	Calibration Handle
2	1900013	4	2 Hole Cast Flangette 3/4"
3	7500071	2	Calibration Pointer Nut
4	7500072	2	Calibration Control Plate Nut
5	7500073	2	Calibration Shaft
6	8400061	2	Calibration Scale Plate
7	6500016	1	Calibration Scale Decal - Grain
7A	6500017	1	Calibrations Scale Decal - Fertilizer
8	4800008	8	5/16" x 3/4" Carriage Bolt
9	5000022	12	5/16" Lock Washer
10	4900003	12	5/16" Hex Nut
11	4800013	4	5/16" x 1" Hex Bolt
12	5000039	2	1-1/4" OD x 13/16" ID x .110 Washer
13	5000023	12	5/16" Flat Washer



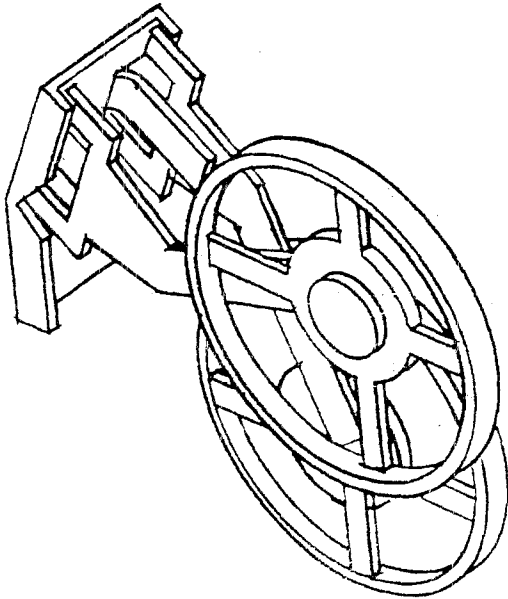
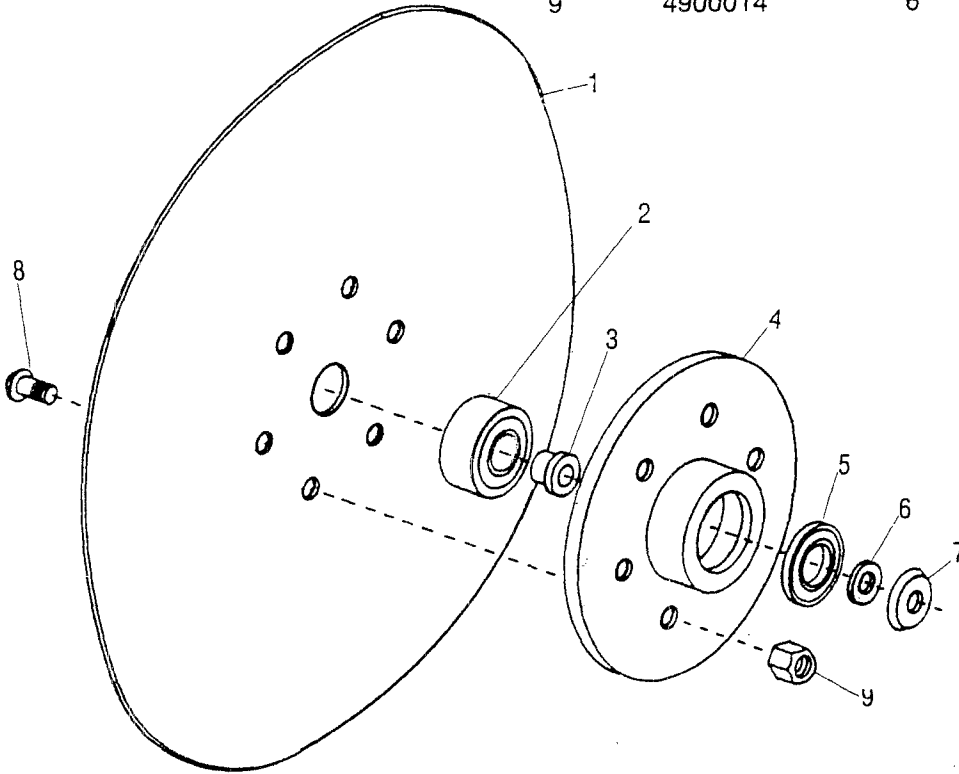
# 1000 DRILL BALLAST BRACKETS

Item	Part No.	Qty.	Description
1	8400177	4	Saddle
2	8400178	4	Tie Strap
3	4800184	4	3/4" L-Bolt 5-1/4" x 6-1/4"
4	5000005	4	3/4" Flat Washer
5	5000012	8	3/4" Lock Washer
6	4900004	8	3/4" Hex Nut
7	4800146	8	3/8" x 2" Hex Bolt
8	5000019	8	3/8" Lock Washer
9	4900002	8	3/8" Hex Nut

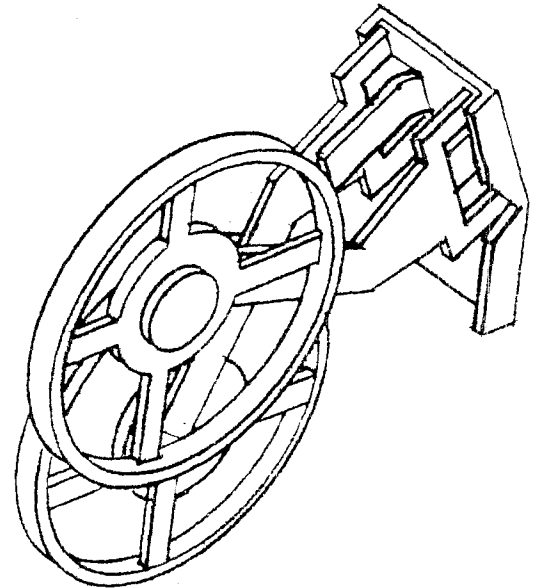


# DISK ASSEMBLY

Item	Part No.	Qty.	Description
1	7500137	1	Disk 18"
2	2000030	1	Bearing
3	7500139	1	Pilot (Bearing Sleeve)
4	7500138	1	Hub (Bearing Cage)
5	2900031	1	Seal
6	5000009	1	Shim Washer
7	8400179	1	Cupped Washer (Cap)
8	4800161	6	1/2" Socket Head Screws
9	4900014	6	1/2" Lock Nuts

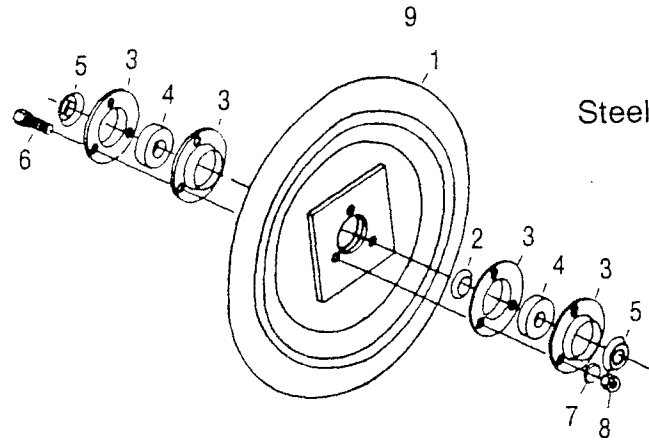


RIGHT HAND  
 CASTING NO. 50 (7500131)  
 7500133 - Scraper Complete  
 7500135 - Wheel



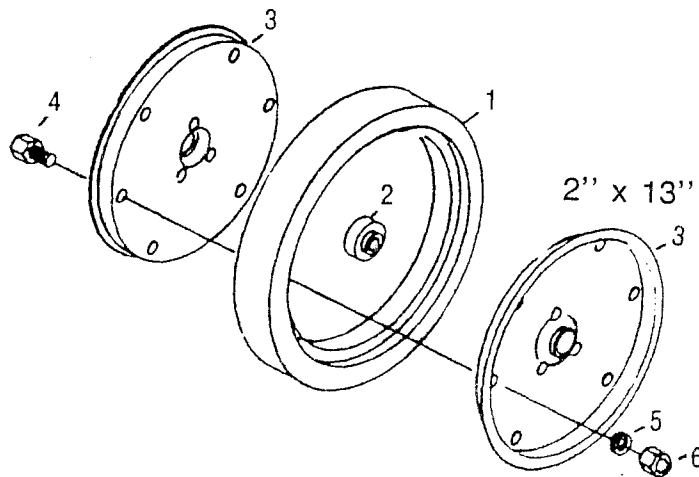
LEFT HAND  
 FOR CASTING NO. 52 (7500132)  
 7500130 - Scraper Complete  
 7500135 - Wheel

# PRESS WHEEL ASSEMBLY



Steel

Item	Part No.	Qty.	Description
1	8400105	1	Packer Wheel, Steel Round
2	5000010	1	Spacer Washer, 1-5/8" x 3/4" x .090
3	2100006	4	3-Hole Flangerettes
4	2000004	2	Bearing, 3/4"
5	7400044	2	Bearing Shield
6	4800071	3	Bolt, 5/16" x 1-1/4", Gr. 5
7	5000015	3	Star Washer, 5/16"
8	4900017	3	Hex Nut, 5/16"
9	7500066	1	Packer Wheel (Complete)



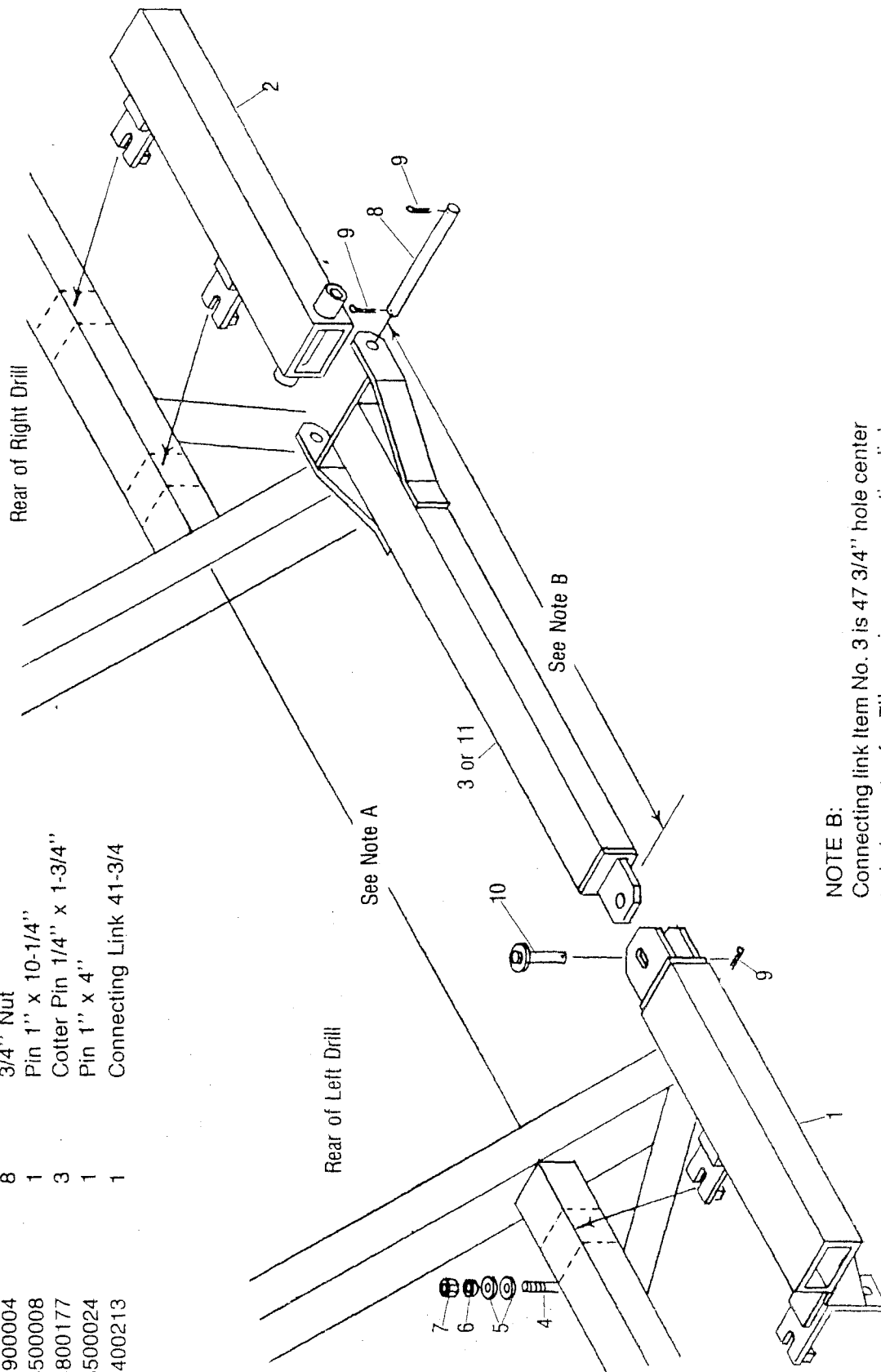
2' x 13"

Item	Part No.	Qty.	Description
1	2600015	1	Tire
2	2000018	2	Bearing, 5/8"
3	2800019	2	Wheel Halves
4	4800164	9	3/8" x 3/4" Hex Bolt
5	5000019	9	3/8" Lock Washer
6	4900002	9	3/8" Hex Nut
7	7500079	1	2' x 13" Wheel Complete

# 1000 DRILL REAR STABILIZER

**NOTE A:**  
Space drill frames 53-1/4" apart for 7" spacing or space drill frames 47-1/4" apart for paired row spacing.

Item	Part No.	Qty.	Description
1	8400180	1	Left Mount
2	8400181	1	Right Mount
3	8400182	1	Connecting Link 47-3/4
4	4800184	4	3/4" L-Bolt 5-1/4" x 6-1/4"
5	5000005	4	3/4" Flat Washer
6	5000012	8	3/4" Lock Washer
7	4900004	8	3/4" Nut
8	8500008	1	Pin 1" x 10-1/4"
9	4800177	3	Cotter Pin 1/4" x 1-3/4"
10	8500024	1	Pin 1" x 4"
11	8400213	1	Connecting Link 41-3/4

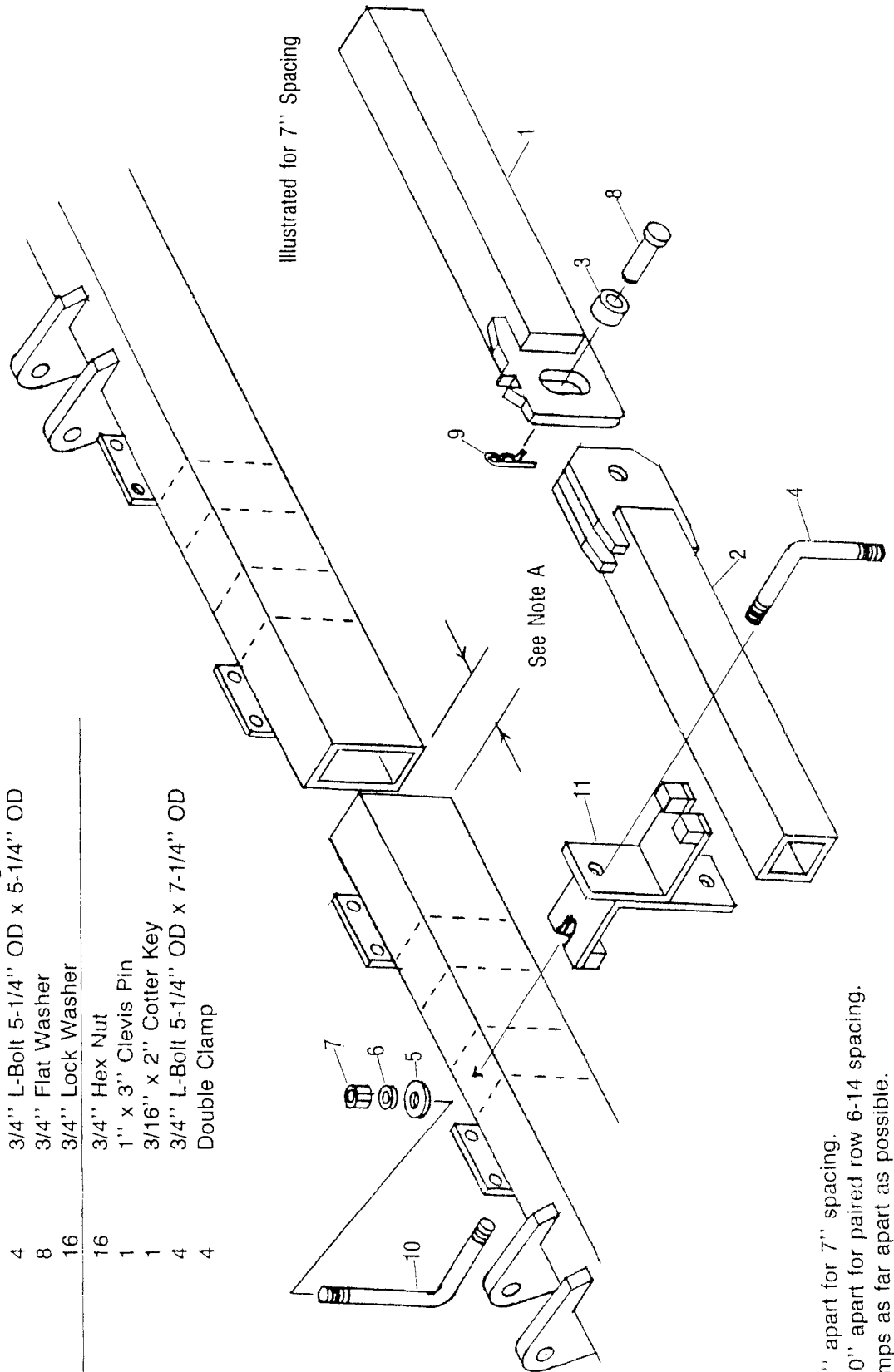


**NOTE B:**  
Connecting link item No. 3 is 47 3/4" hole center to hole center for 7" spacing or connecting link is 41-3/4" hole center to hole center for paired row spacing.

NOTE: For drill with disc type banding openers, mount stabilizer in front of banding tool bar. See illustration.  
 For drills with anhydrous knife, mount stabilizer behind banding tool bar.

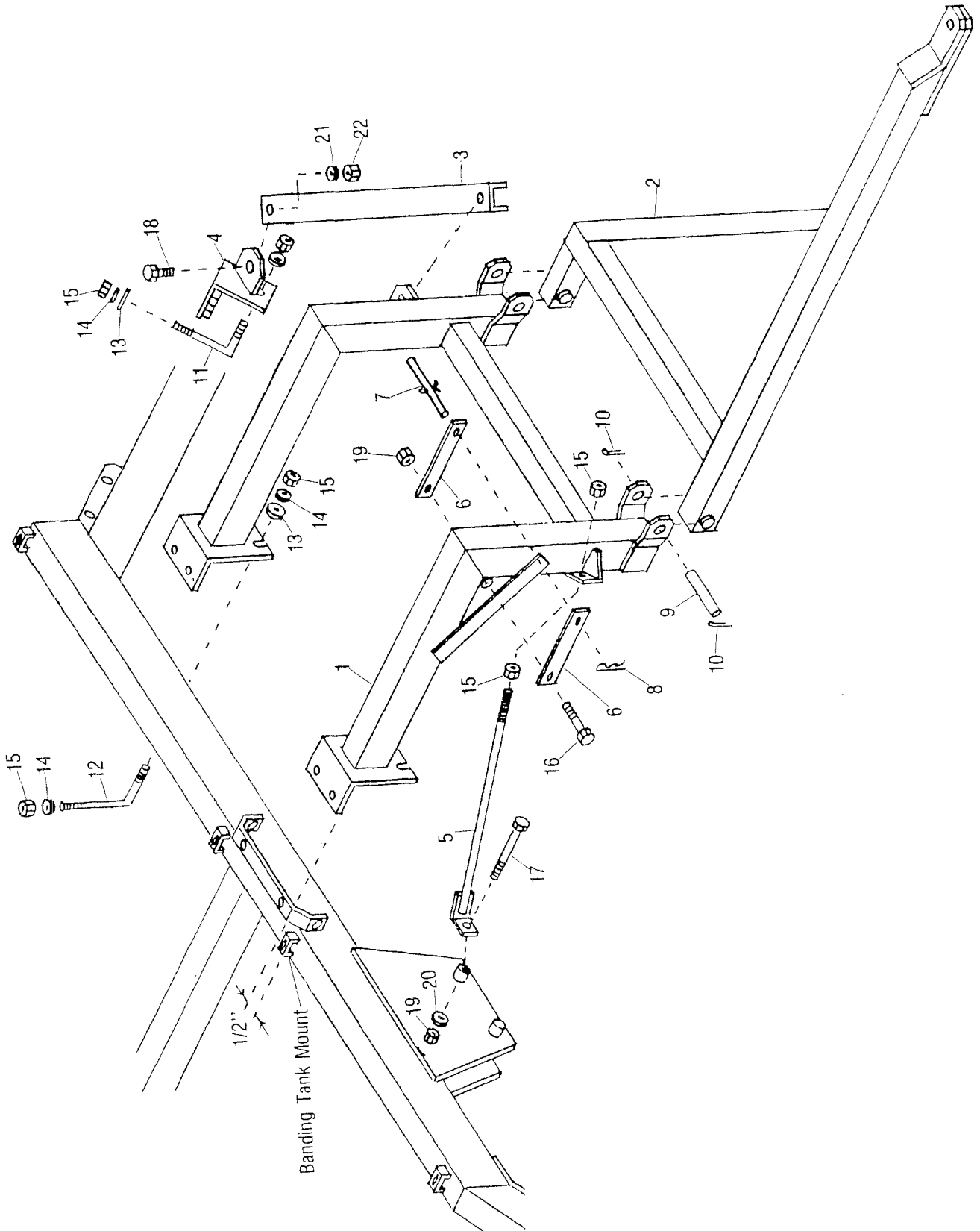
## 1000 DRILL FRONT STABILIZER

Item	Part No.	Qty.	Description
1	8400183	1	Male Stabilizer
2	8400184	1	Female Stabilizer
3	8400185	1	1-1/2" OD x 1" ID Bushing
4	8400183	4	3/4" L-Bolt 5-1/4" OD x 5-1/4" OD
5	5000005	8	3/4" Flat Washer
6	5000012	16	3/4" Lock Washer
7	4900004	16	3/4" Hex Nut
8	4800185	1	1" x 3" Clevis Pin
9	4800157	1	3/16" x 2" Cotter Key
10	4800199	4	3/4" L-Bolt 5-1/4" OD x 7-1/4" OD
11	8400186	4	Double Clamp



NOTE A:  
 Space tool bars 3" apart for 7" spacing.  
 Space tool bars 10" apart for paired row 6-14 spacing.  
 Mount double clamps as far apart as possible.

# 1000 DRILL TOW HITCH

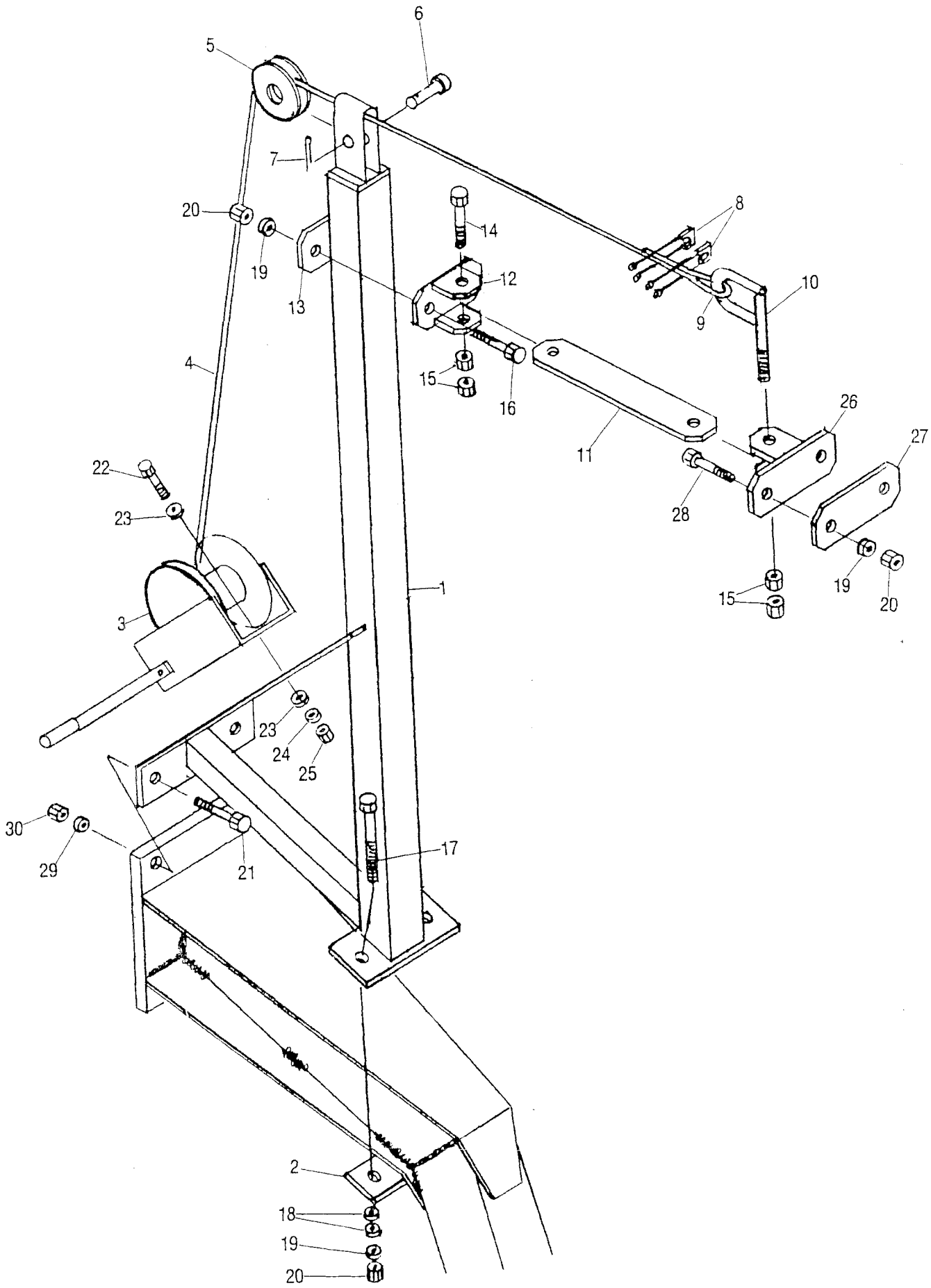


# 1000 DRILL TOW HITCH

## SHIPPING LIST

Item	Part No.	Qty.	Description
1	8400187	1	Mounting Frame
2	8400188	1	Tow Hitch
3	8400189	1	Rear Brace
4	8400190	1	Rear Brace Mount
5	8400191	1	Front Brace
6	8400192	2	Hold Up Straps
7	8500026	1	5/8" x 8" Pin with 3/16" Cotter Pin Installed
8	4800107	1	1/8" Hair Pin
9	8500025	2	Hinge Pin 1" x 5-3/4"
10	4800103	4	1/4" x 2" Cotter Pin
11	4800199	1	3/4" L-Bolt 5-1/4" O.D. x 7-1/4" O.D.
12	4800200	4	3/4" L-Bolt 5-1/4" O.D. x 8-1/4" O.D.
13	5000005	5	3/4" Flat Washer
14	5000012	10	3/4" Lock Washer
15	4900004	10	3/4" Hex Nut
16	4800158	1	5/8" x 4-1/2" Bolt
17	4800144	1	5/8" x 6-1/2" Bolt
18	4800106	2	5/8" x 1-1/2" Bolt
19	4900012	2	5/8" Lock Nut
20	5000002	1	5/8" Flat Washer
21	5000003	2	5/8" Lock Washer
22	4900005	2	5/8" Hex Nut

# 3 DRILL HITCH LIFT - 4 DRILL HITCH LIFT





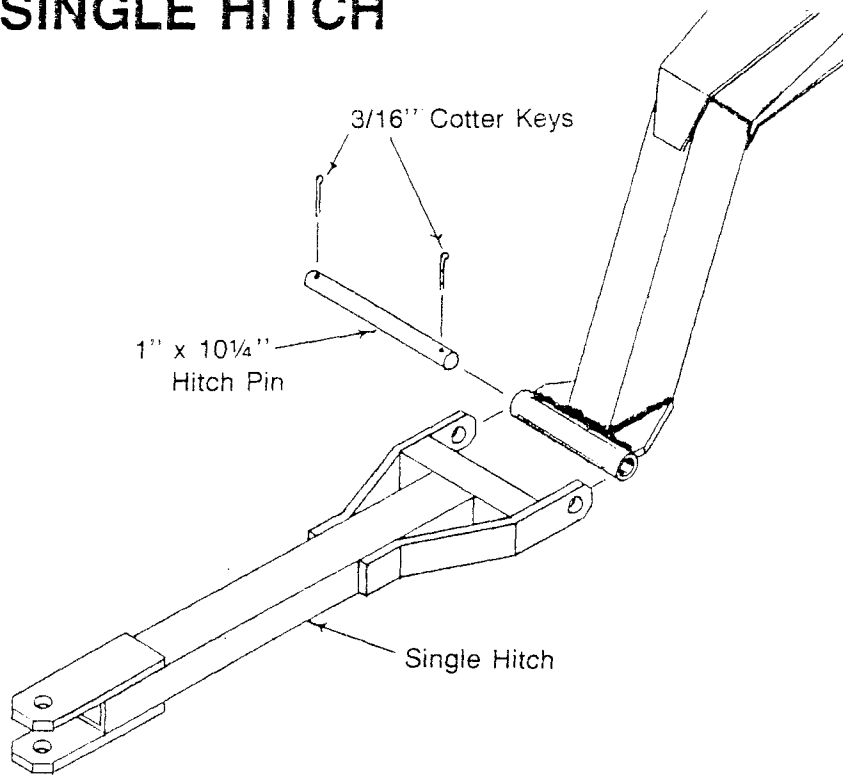
# HITCH LIFT 3 DRILL

Item	Part No.	Qty.	Description
1	8300293	1	Lift Frame
2	8300294	1	Lift Mount Strap 2' x 6"
3	5800003	1	Winch
4	5600011	1	1/4" Cable 12' Long
5	5500001	1	Cable Sheaves
6	4800030	1	5/8" x 2" Clevis Pin
7	4800123	1	1/8" x 1-1/2" Cotter Pin
8	4800027	2	1/4" Cable Clamp
9	7500121		1/4" Cable Thimble
10	8300356	1	1 Bolt
11	8300295	1	Hold Up Bar 2" x 11-1/2"
12	8300296	1	Hold Up Bar Mount 4-1/2" Long
13	8300297	1	Hold Up Bar Strap 4-1/2" Long x 2"
14	4800054	1	5/8" x 3-1/2" Bolt
15	4900005	4	5/8" Nuts
16	4800006	2	1/2" x 4" Bolt
17	4800080	2	1/2" x 7" Bolt
18	5000004	4	1/2" Flat Washer
19	5000006	6	1/2" Lock Washer
20	4900001	6	1/2" Hex Nut
21	4800017	2	3/4" x 3" Bolt
22	4800003	3	3/8" x 1" Bolt
23	5000001	6	3/8" Flat Washer
24	5000019	3	3/8" Lock Washer
25	4900002	3	3/8" Hex Nut
26	8300298	1	Hold Up Bar Mount 6 Long
27	8300299	1	Hold Up Bar Strap 6 Long x 2"
28	4800077	2	1/2" x 5-1/2" Bolt
29	5000012	2	3/4" Lock Washer
30	4900004	2	3/4" Nut

# 4 DRILL HITCH LIFT

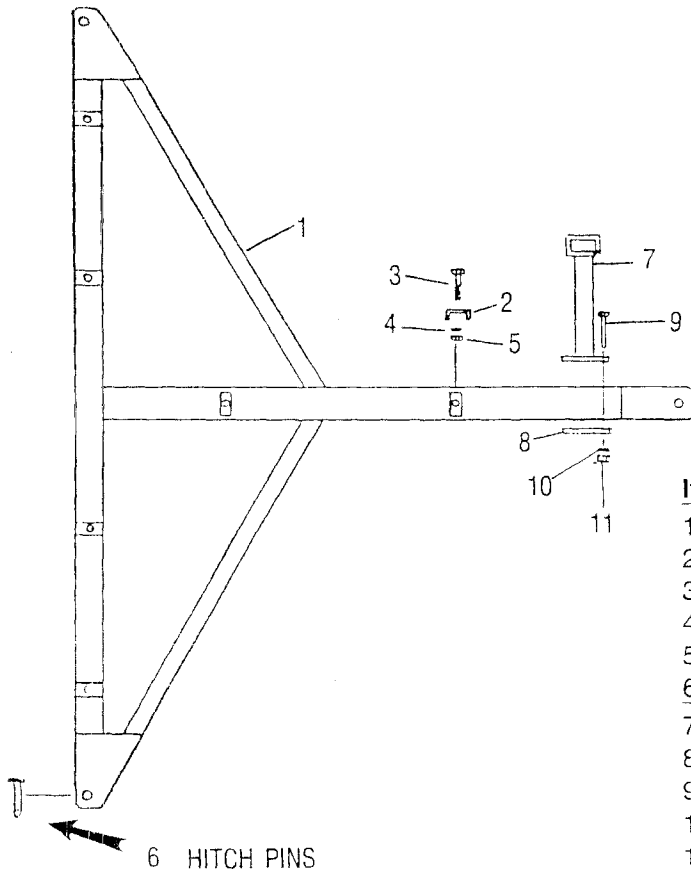
SAME AS ABOVE EXCEPT			
Item	Part No.	Qty.	Description
26	8300296	1	Hold Up Bar Mount 4-1/2" Long
27	8300297	1	Hold Up Bar Strap 4-1/2" Long x 2"
28	4800006	2	1/2" x 4" Bolt

# 1000 DRILL SINGLE HITCH



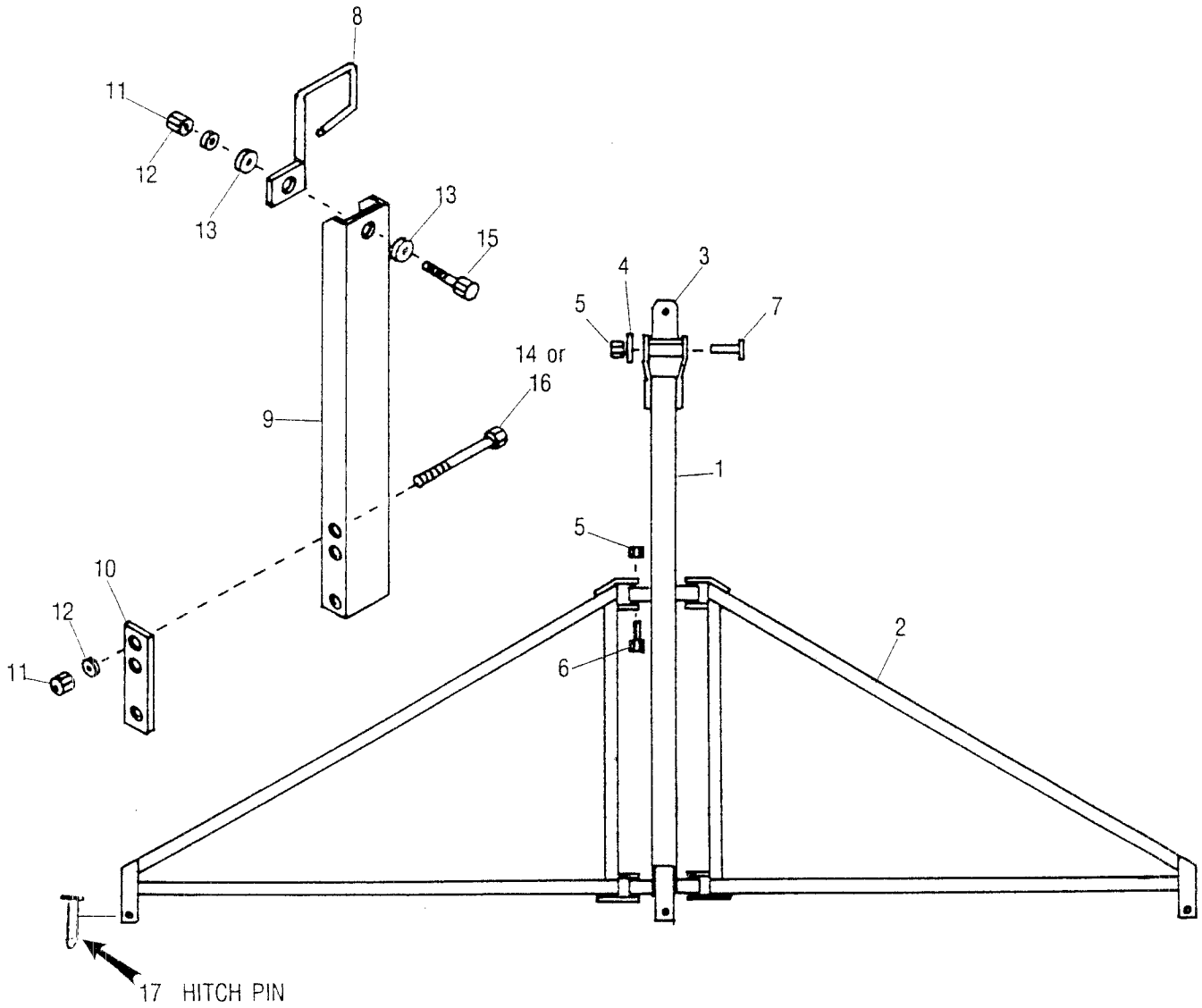
Item	Part No.	Qty.	Description
1	8300327	1	Hitch
2	8500008	1	1" x 10-1/4" Hitch Pin
3	4800157	2	3/16" x 2" Cotter Key

# 1000 DRILL 2 DRILL HITCH



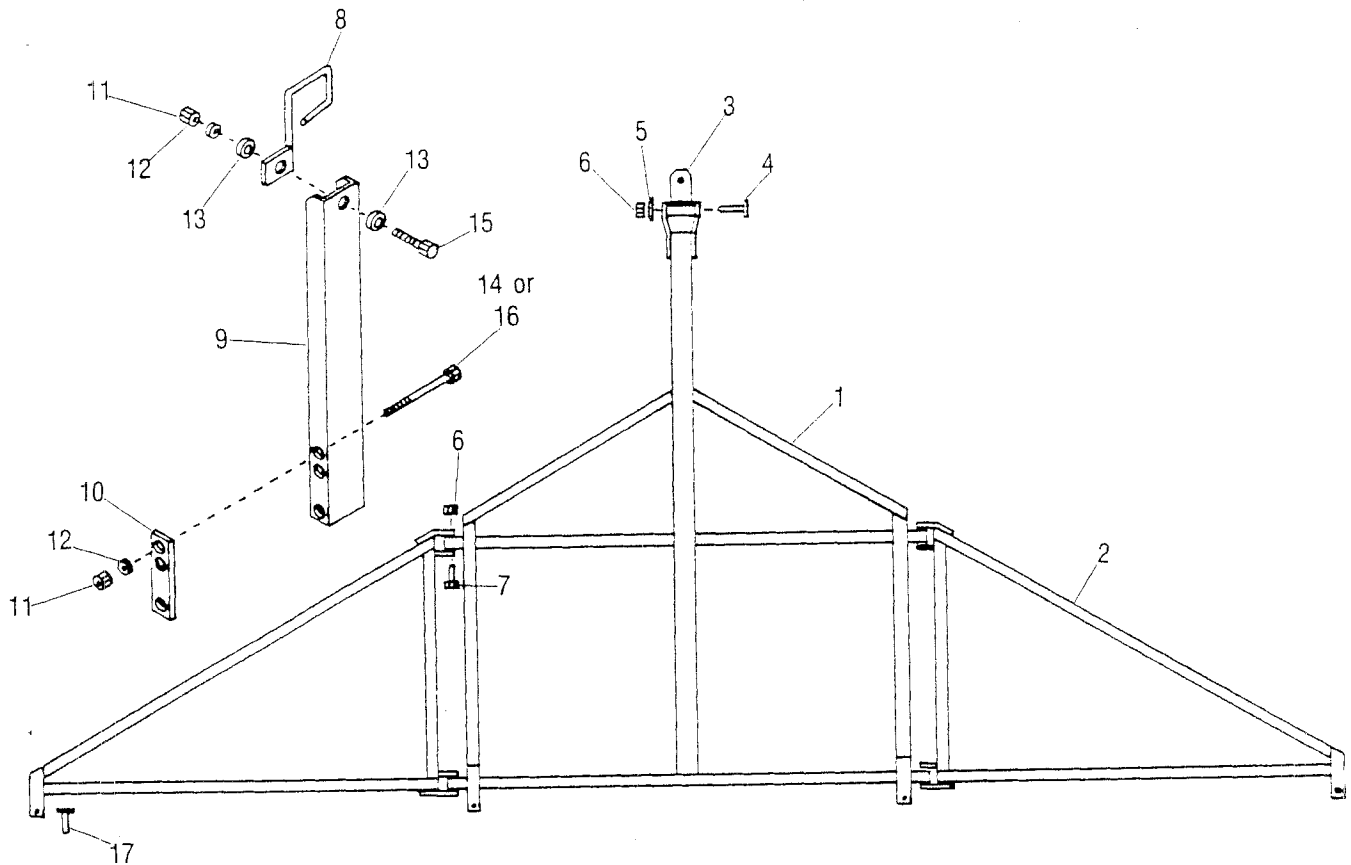
Item	Part No.	Qty.	Description
1	8400193	1	Hitch
2	8300329	6	Hose Clamp
3	4800142	6	3/8" x 1-3/4" Bolt
4	5000019	6	3/8" Lock Washer
5	4900002	6	3/8" Hex Nut
6	8600025	2	1" x 6" Hitch Pin
7	8300330	1	Hose Minder
8	8300331	1	Hose Minder Strap 1-1/2" x 6"
9	4800141	2	1/2" x 4-1/2" Hex Bolt
10	5000006	2	1/2" Lock Washer
11	4900001	2	1/2" Hex Nut

# 1000 DRILL 3 DRILL HITCH



Item	Part No.	Qty.	Description
1	8400194	1	3 Drill Hitch Center Section
2	8400195	2	Hitch Wing
3	8400196	1	Hitch Block
4	8300341	1	2" OD x 1.028 ID 3/8" Thick Washer
5	4900015	5	1" Nylon Insert Nut
6	4800187	4	1" x 6" Hex Bolt
7	8600026	1	1" x 6" Hitch Block Pin
8	8300335	2	Hose Minder
9	8300336	2	Hose Minder Channel
10	8300331	2	Hose Minder Strap
11	4900001	6	1/2" Hex Nut
12	5000006	6	1/2" Lock Washer
13	5000004	4	1/2" Flat Washer
14	4800077	2	1/2" x 5-1/2" Bolt
15	4800018	2	1/2" x 1-1/4" Bolt
16	4800188	2	1/2" x 4" Bolt
17	8600025	3	1" x 6" Hitch Pin

# 1000 DRILL 4 DRILL HITCH

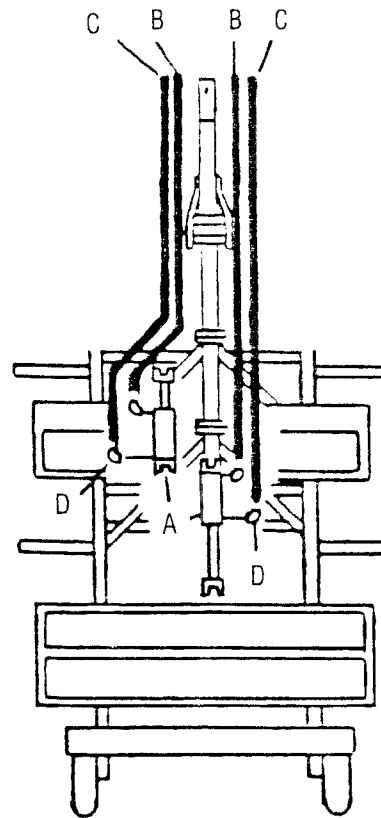


Item	Part No.	Qty.	Description
1	8400197	1	4 Drill Hitch Center Section
2	8400195	2	Hitch Wing
3	8400196	1	Hitch Block
4	8600026	1	1" x 6" Hitch Block Pin
5	8300341	1	2 OD x 1.028 ID 3/8" Thick Washer
6	4900015	5	1" Nylon Insert Nut
7	4800187	4	1" x 6" Hex Bolt
8	8300335	2	Hose Minder
9	8300336	2	Hose Minder Channel
10	8300331	2	Hose Minder Strap
11	4900001	6	1/2" Hex Nut
12	5000006	6	1/2" Lock Washer
13	5000004	4	1/2" Flat Washer
14	4800077	2	1/2" x 5-1/2" Bolt
15	4800018	2	1/2" x 1-1/4" Bolt
16	4800188	2	1/2" x 4" Bolt
17	8600025	4	1" x 6" Hitch Pins

# 1000 DRILL

## SINGLE DRILL DEPTH CONTROL HYDRAULICS

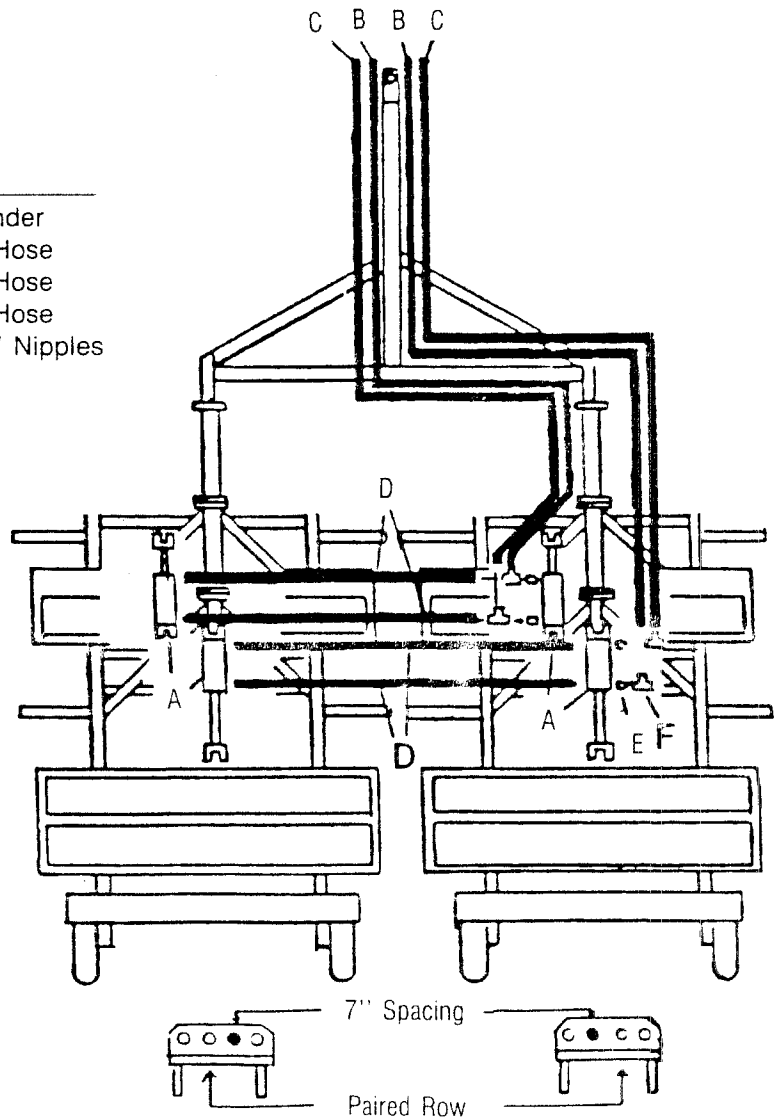
Item	Part No.	Qty.	Description
A	4100039	2	3" x 8" Cylinders
B	3700113	2	162" - 1/2" Hose
C	3700114	2	174" - 1/2" Hose
D	3800008	4	90 Degree Street Elbow



# 1000 DRILL

## TWO DRILL DEPTH CONTROL HYDRAULICS

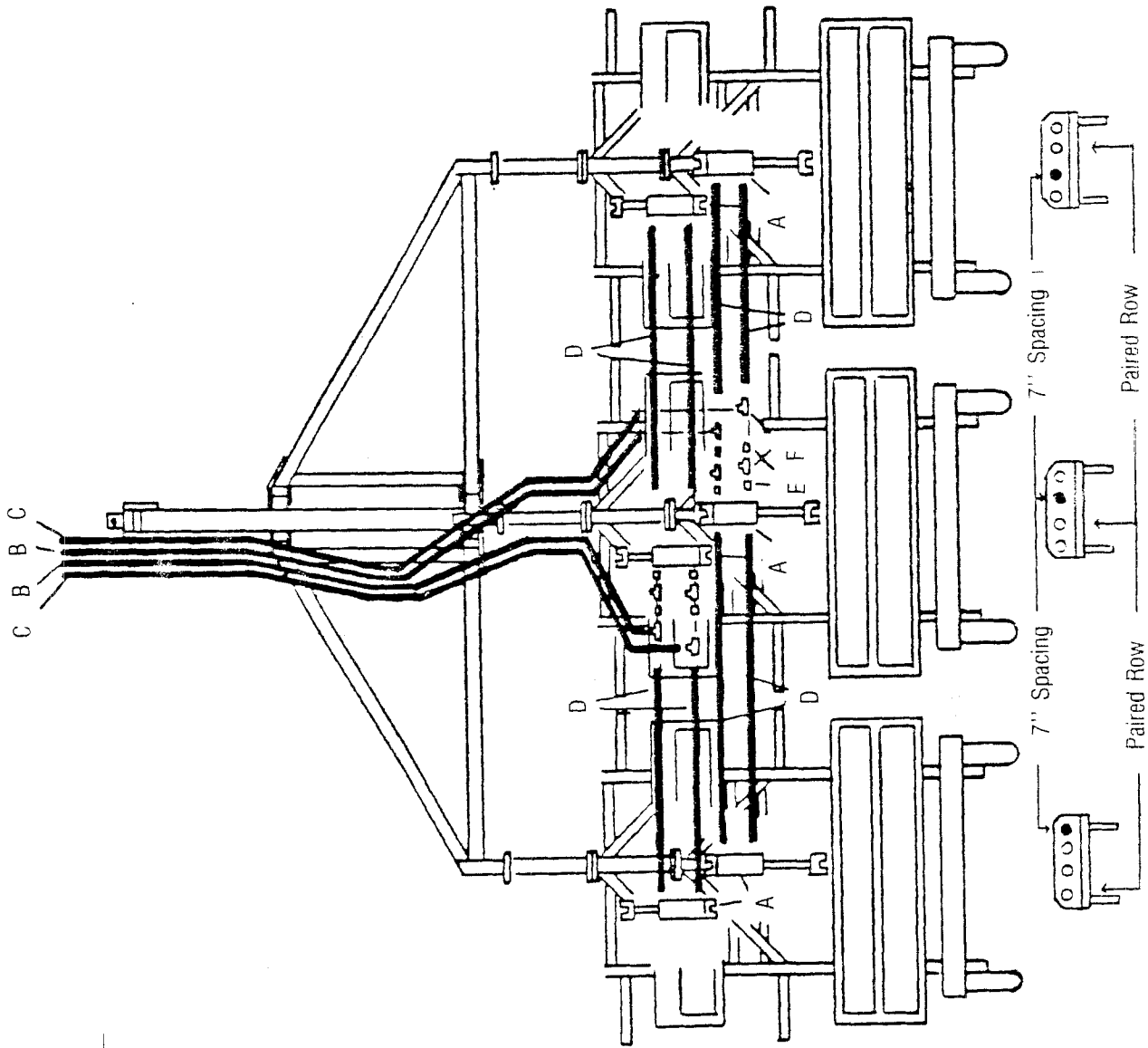
Item	Part No.	Qty.	Description
A	4100039	4	3" x 8" Cylinder
B	3700115	2	282" - 1/2" Hose
C	3700103	2	306" - 1/2" Hose
D	3700061	4	132" - 1/2" Hose
E	3800086	4	1/2" x 1-1/2" Nipples
F	3800009	4	1/2" Tees



NOTE: Ball valves may be added to lift cylinders to operate drills individually.

# 1000 DRILL THREE DRILL DEPTH CONTROL HYDRAULICS

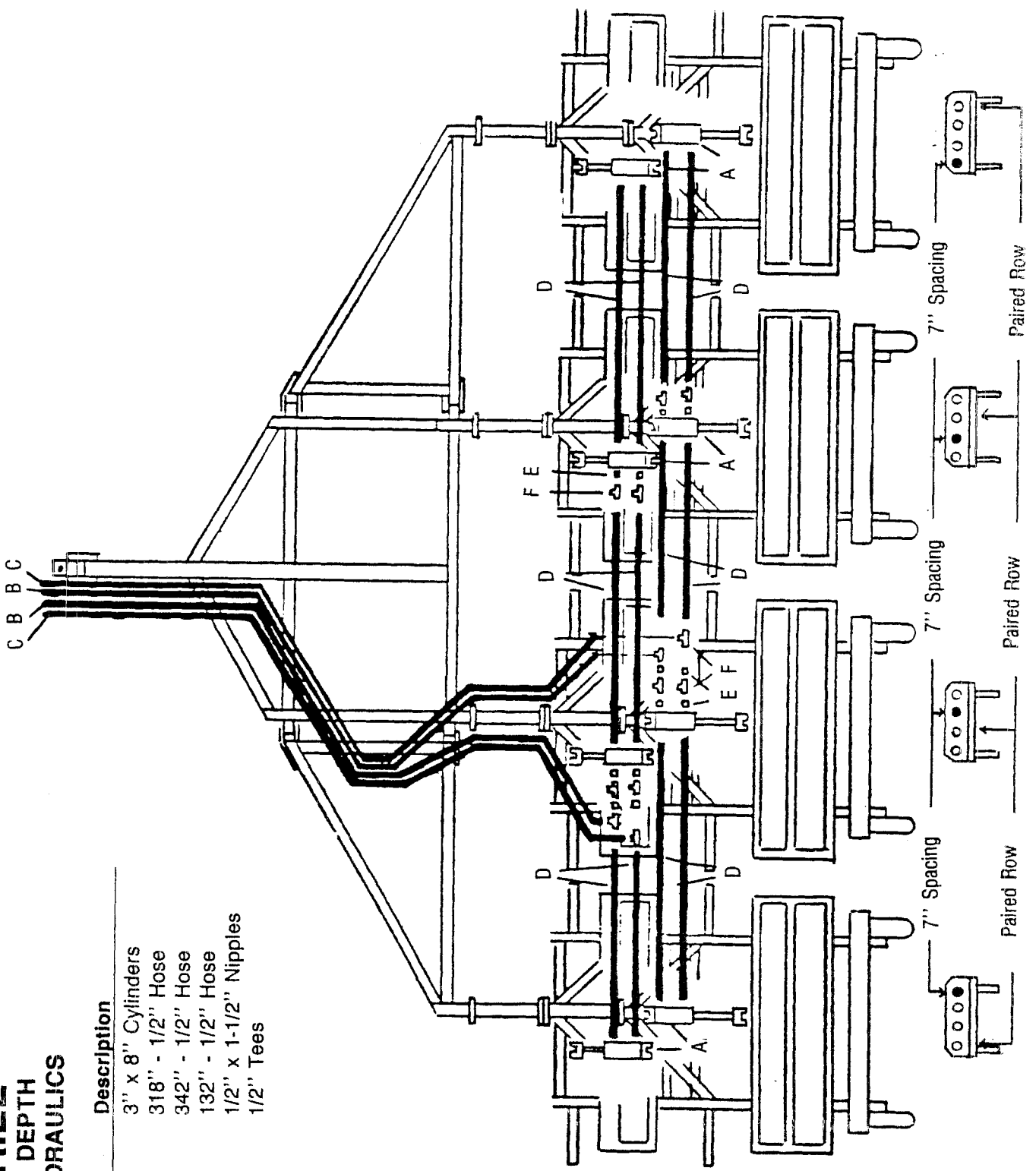
Item	Part No.	Qty.	Description
A	4100039	6	3" x 8" Cylinders
B	3700116	2	258" - 1/2" Hose
C	3700115	2	282" - 1/2" Hose
D	3700061	8	132" - 1/2" Hose
E	3800086	8	1/2" x 1-1/2" Nipples
F	3800009	8	1/2" Tees



NOTE: Ball valves may be ADDED to lift cylinders to operate drills individually.

# 1000 DRILL FOUR DRILL DEPTH CONTROL HYDRAULICS

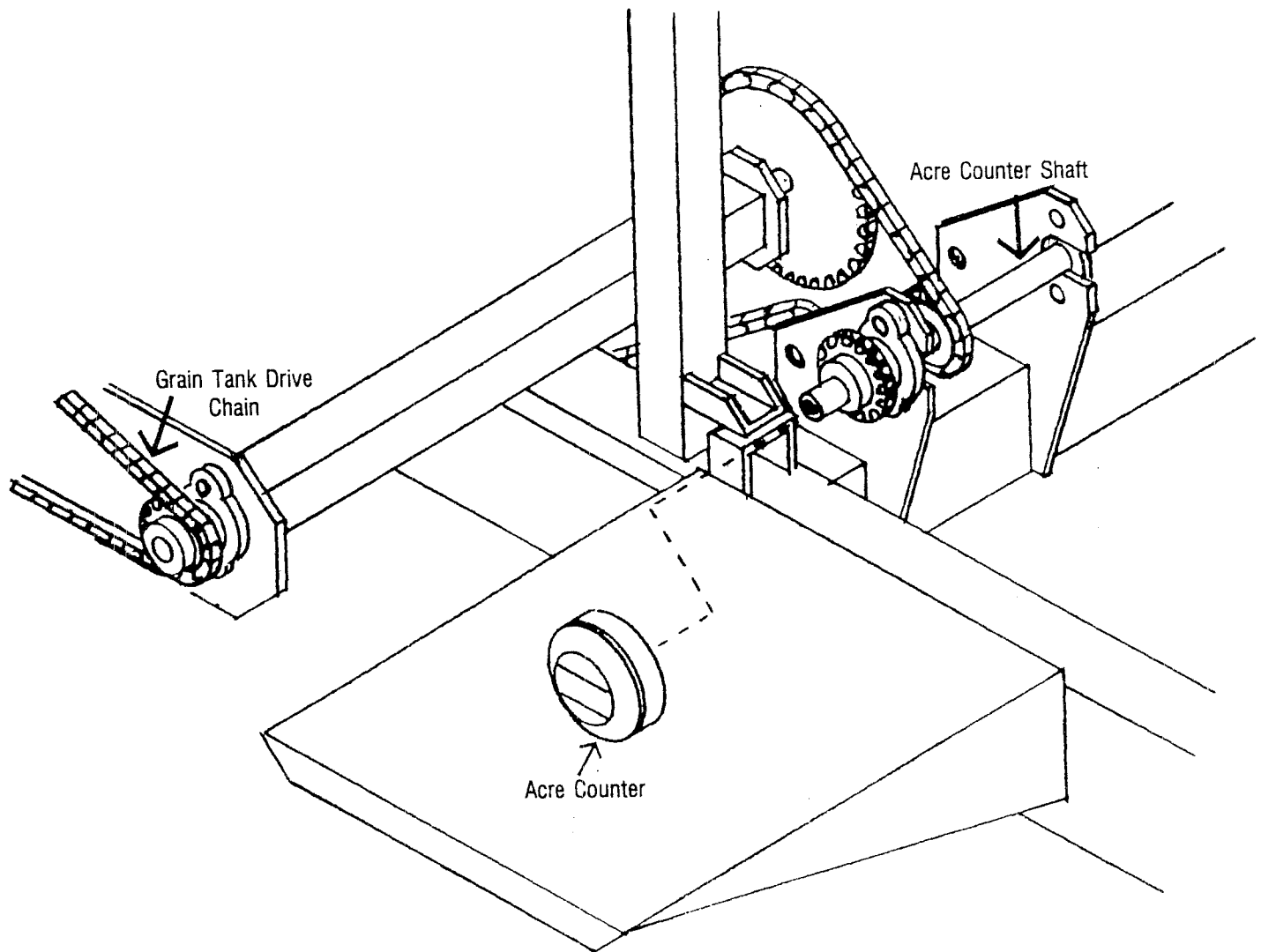
Item	Part No.	Qty.	Description
A	4100039	8	3" x 8" Cylinders
B	3700104	2	318" - 1/2" Hose
C	3700112	2	342" - 1/2" Hose
D	3700061	12	132" - 1/2" Hose
E	3800086	12	1/2" x 1-1/2" Nipples
F	3800009	12	1/2" Tees



# 1000 DRILL ACRE COUNTER

## INSTALLATION:

1. Turn acre counter into threaded hole in end of acre counter shaft. (See illustration)



7500136 Acre Counter (794 Re)